

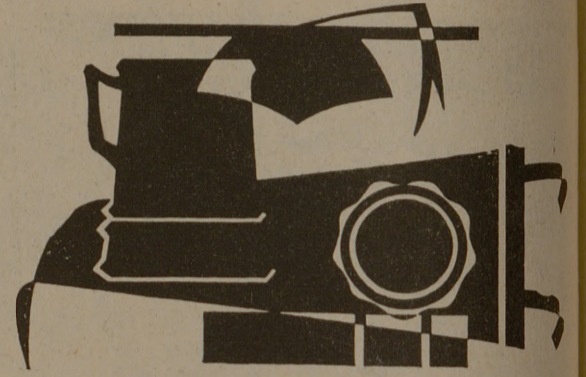
Read Battalion Classifieds



For all your insurance needs  
See U. M. Alexander, Jr. '40  
221 S. Main, Bryan  
823-3616

State Farm Insurance Companies - Home Offices Bloomington, Ill.

TAKE HOME  
A MEMENTO



OF YOUR SCHOOL

from

SHAFFER'S

North Gate

# Texas Solons Pass Bills To Aid Outdoorsmen

AUSTIN (AP)—On a scoreboard basis, Texas outdoorsmen fared much better during the legislature than the arm-chair and grandstand sportsmen.

The legislators, many of them who left the capitol for the outdoors when the session ended, passed bills for campers, hunters, fishermen, bowlers and boat owners.

But they left hanging a proposal to prohibit television blackouts on professional and college football games and shied away from a bill to relax the transfer rule governing Texas' hundreds of thousands of schoolboy athletes.

A change in the transfer rule would probably have pleased as many parents as pupils.

It now states that if a pupil moves into a school district with his parents, he must wait at least one year to play football or basketball. He may take part in other sports if he moves into the district at least 30 days before the start of the season.

The bill would have exempted children or wards of members of the U. S. Armed Forces on active duty, the Texas Legislature—a clergyman or a pupil transferred to another school district by court order.

The cookout, outdoor sleepers were considered when the lawmakers approved a \$75 million bond program to buy and develop

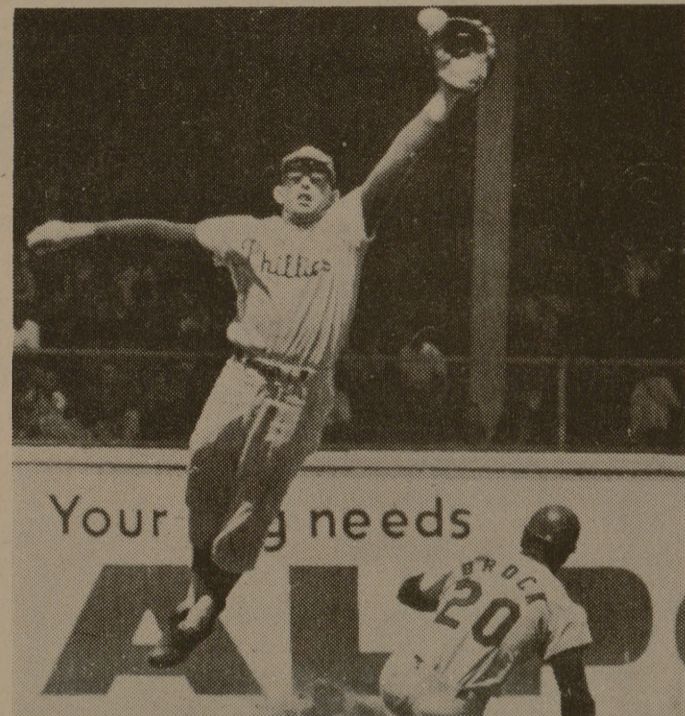
150,960 acres of new state park land over the next 10 years. A total of \$2 million was appropriated for new wildlife manage-

ment areas and \$500,000 for a new 8,000-acre state park at Mountain Creek Lake between Dallas and Grand Prairie.



EYEBALL TO BASEBALL

Sister Rose Mary, laboratory supervisor at St. Mary's hospital at Kansas City, takes time out for batting practice with some young women employees of the hospital on its east lawn. They traded turns batting, fielding and throwing. (AP Wirephoto)



Your needs

STEALING UNDER THE THROW

Lou Brock, St. Louis Cardinals outfielder, is safe stealing second base under high throw from Philadelphia Phillies catcher Bob Uecker in the third inning of the game in Philadelphia. Second baseman Cookie Rojas leaps high to stab the throw, but is too late to make the tag. (AP Wirephoto)

## Baseball Scores

HOUSTON (AP)—The Houston Astros backed Dave Giusti's four-hit pitching with a six-run explosion in the sixth inning and rubbed the New York Mets 6-1 Wednesday night.

The victory lifted the Astros into ninth place in the National League, 13 percentage points ahead of New York.

Bob Johnson homered for the Mets in the fifth inning and righthander Don Cardwell blanked the Astros on five hits until the sixth.

CHICAGO (AP)—Ron Hansen singled home Ken Berry in the 11th inning to give the Chicago White Sox a 3-2 victory over Baltimore Wednesday night and move the Sox to within a half-game of American League-leading Detroit.

Detroit lost to Cleveland 9-0 Wednesday night.

Berry opened the 11th with a single and moved to second on a sacrifice. Then, after Gerry McNertney was purposely walked, Hansen delivered the winning hit.

The Orioles tied it at 2-2 with a run in the ninth. Pinch hitter Vic Roznovsky led off with a single and Curt Blefary walked. After Blefary was forced at second, with pinch runner Mark Belanger advancing to third, Boog Powell hit a sacrifice fly off Wilbur Wood, who had replaced Bob Locker.

Hoyt Wilhelm then came on to get Paul Blair to ground into the third out.

CINCINNATI (AP)—Pitcher Rich Nye got three hits, scored two runs and drove in another as the Chicago Cubs edged the National League-leading Cincinnati Reds 6-5 Wednesday night.

A two-run single by Ron Santo capped a three-run Chicago eighth inning and proved to be the decisive margin, as the Reds rallied for three runs in their half of the inning, before Nye 3-3, got Jim Coker to line out.

The Cubs got their first run in the third inning when Nye doubled and scored on Beckett's

single. In the sixth, Randy Hundley singled and later scored on Nye's single to center.

Two singles sandwiched around an error produced another Chicago run in the seventh.

**SPECIAL!**  
Duncan Hines  
**Cake Mixes**  
Just like Mother made—Regular Box  
**29¢**

**SPECIAL!**  
For the Bathroom  
**Scot Tissue**  
—1000-Sheet Roll  
**9 for 99¢**

**SPECIAL**  
Laundry Detergent  
**Giant Bold**  
No washday blues. (10¢ Off)—Giant Box  
**59¢**

**SPECIAL**  
6-Bottle Carton  
**DR. PEPPER**  
Limit—2 Cartons  
**29¢**

**Sweet Peas**  
Del Monte. Try some creamed  
**5 for 88¢**

**Golden Corn**  
Del Monte. Cream Style.  
**5 for 88¢**

**Sliced Peaches**  
or Halves. Del Monte. Yellow Cling.  
**4 for \$1**

**Tomato Juice** Del Monte. Special! 46-oz. Can **3 for 89¢**  
**Fruit Drink** Del Monte. Special! \*Grape \*Orange \*Apple **4 for 99¢**  
\*Pineapple-Grapefruit \*Merry Cherry—46-oz. Can  
**Tomato Sauce** Del Monte. Special! 8-oz. Can **10 for 99¢**  
**Orange Juice** Del Monte. Unsweetened. Special!—46-oz. Can **39¢**  
**Pineapple** Del Monte. Special! Sliced or Crushed—20½-oz. Can **3 for 99¢**  
**Pineapple Juice** Del Monte. Special!—46-oz. Can **33¢**

**Prune Juice** Del Monte—32-oz. Glass **45¢**  
**Bartlett Pears** Del Monte—17-oz. Can **29¢**  
**Diced Carrots** Del Monte—16-oz. Glass **21¢**  
**Spinach** Del Monte. Special!—16-oz. Can **6 for 99¢**  
**Green Beans** Del Monte. Whole—16-oz. Can **29¢**  
**Tomatoes** Del Monte. Special! Whole—16-oz. Can **3 for 89¢**

**Fruit Cocktail**  
Del Monte. Special!  
**5 for 88¢**

**Tomatoes**  
Del Monte. Stewed. Special!  
**4 for 99¢**

**Catsup**  
Del Monte. Stock up now. Special!  
**2 for 25¢**

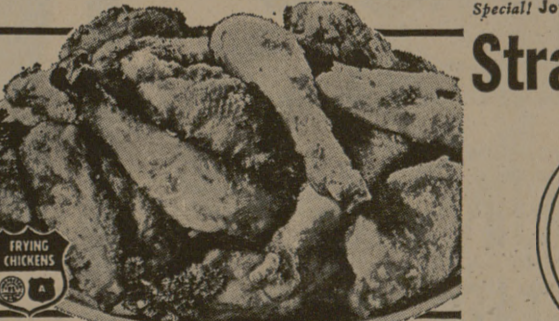
## Cantaloupes

Fresh, Juicy, ripe melons. Serve as dessert **Lb. 9¢**

Quality Manor House Young  
**Hen Turkeys 34¢ Lb.**  
10 to 16-Lb. Avg. Delicious with sausage stuffing. USDA Inspected, Grade A. (Young Tom Turkeys . . . Lb. 33¢)

**Ground Beef** Lean, red. Always freshly ground. (Chub Pak . . . Safeway, 2-Lbs. 89¢) **45¢**  
**Sliced Bacon** Safeway—1-Lb. Pkg. (Armour Star Mira-Cure—Lb. 67¢) **65¢**  
**Boneless Roast** \*Chuck \*Shoulder. USDA Choice Heavy Beef. **75¢**

**FRYERS 29¢**  
USDA Inspected . . . Grade A. Every Day Low Price. Whole. (Cut-up . . . Lb. 35¢) —Lb.  
**Leg Quarters** Cut from USDA Inspected, Grade A Fryers—Lb. **35¢**  
**Breast Quarters** Cut from USDA Inspected, Grade A Fryers—Lb. **43¢**



**Red Potatoes** New. US No. 1-A. **10 Lb. 59¢**  
**Bananas** Every Day Low Price. **2 Lb. 29¢**  
**Oranges** California Valencia. Fancy, Large Size. **2 Lb. 29¢**  
**Avocados** Fuerte. Large Size. **2 for 29¢**  
**Radishes** Red. New Crop—Bunch **2 for 15¢**

**Mellorine** Special! Joyett. Assorted Flavors—½-Gal. Ctn. **29¢**  
**Strawberries** Bel-air. 10-oz. Pkg. **3 for \$1**

**Why Pay More?**  
**Golden Corn** Gardenside. Cream Style—17-oz. Can **19¢**  
**Spinach** Gardenside—16-oz. Can **14¢**  
**Sweet Peas** Gardenside—17-oz. Can **16¢**  
**Tomatoes** Gardenside. 10-oz. Can **2 for 25¢**  
**Blackeye Peas** Highway. Dry. 16-oz. Can **11¢**  
**Greens** Chopped. Mustard or Turnip. Highway—16-oz. Can **11¢**  
**Pork & Beans** Van Camp's. 16-oz. Can **2 for 29¢**

**Margarine** Coldbrook. Solids. —1-Lb. Pkg. **15¢**  
**Grade 'A' Eggs** Breakfast Gems, Medium Size. —Dozen **29¢**

**PARDNER**  
You'll Always Win The Showdown When You Get Your Duds Done At **CAMPUS CLEANERS**

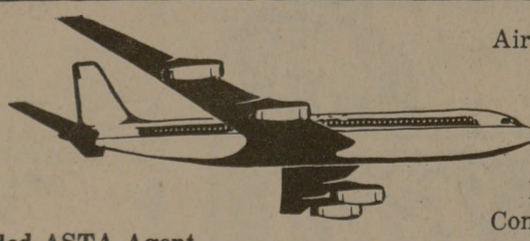


## Beverley Braley...tours...travel

. . . offering a 30 day open Charge Account and accepting all Airline Credit Cards, American Express . . . Diners Club Cards . . . etc. Tickets delivered to your home or office.



The Professional Travel Agency . . . A Bonded ASTA Agent



Airline Reservations and Ticketing . . . Student Rate . . . . . Air Tickets Steamship and Cruise Reservations . . . Custom Planned Foreign Tours . . . Authorized Representative Of All Tours Foreign Car Purchase . . . . . and Rental Convention and Conference Reservations

CALL OUR PROFESSIONAL TRAVEL CONSULTANT—BRYAN 823-8188—MEMORIAL STUDENT CENTER, A&M UNIVERSITY CAMPUS 846-7744