

# Driving Contest Scheduled For Parking Lot Saturday

## Great Weekend! (for those who stayed)

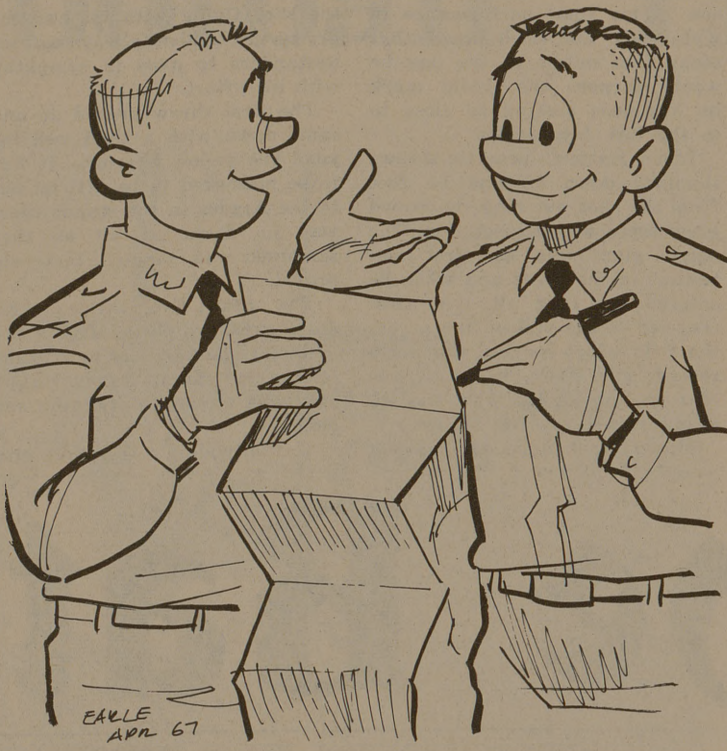
What better way could "Randy Matson Day" be celebrated than with Randy breaking the world's shot put record he had established himself, before a crowd of more than 4,000 hometown fans?

This spectacular performance was only part of one of the most active weekends held on campus this year.

The Backporch Majority and Skeeter Davis provided an exciting Town Hall performance before a small but lively crowd.

A civilian sweetheart was chosen from a group of 12 beauties introduced to civilian students at a barbecue held at the Grove Theater Saturday. She was crowned at the dance later that evening held in the Memorial Student Center.

Yes, civilians, it was your weekend. Too bad most of you didn't stick around Friday to take part in it.



"It's a petition to extend 'Randy Matson Day' to 'Randy Matson Week!'"

## Cancer Society Issues Call For Crusade Volunteers

The American Cancer Society has issued a call for volunteers for its annual Crusade during Cancer Control Month in April. This is a call we hope many will answer. A great many people have responded in the past; a great many people alive today are grateful they did.

In thirty years the number of American Cancer Society volunteers has grown from fewer than 15,000 to 150 times that many. More still are needed. Thirty years ago, fewer than one out of five victims of cancer was being saved. Today it is one out of three. It could be one out of two without acquiring one bit of additional knowledge about cancer. To help make it one out of two, more vigilance is needed and more volunteers to tell the story.

Thirty years ago when the American Cancer Society issued the first call, many doubted that sufficient volunteers would answer. A generally hopeless attitude prevailed. But some who recognized the "special genius in volunteerism," were not discouraged. A great national organization of volunteers was needed, they felt, if any serious gains were to be made against cancer. They argued: "When the dead and dying from cancer are regarded in a similar light to the slain and wounded on the field of battle, somewhat the same compulsion that leads to victory against an invading army will operate in the struggle to vanquish cancer."

The thirty years since have been amazing years. Amazing in lives saved. Amazing in assembling knowledge of cancer that promises eventual conquest of the disease. 1,400,000 men, women and children, alive today, the cured of cancer. Thirty years ago there were only about 165,000.

We hope the American Cancer Society will not want for volunteers during this year's April Crusade. Join now if you possibly can.

## Administration

(Continued From Page 1)

Texas A&M departments into separate departments.

CHANGES CALL for the Education and Psychology Department to be split into individual departments of education and psychology. Separation also was okayed for the History and Government Department.

Dr. Paul R. Hensarling is head of the Education and Psychology Department and Dr. J. M. Nance heads the History and Government Department.

The board noted increased enrollments were key factors in the department divisions.

Dr. Vance E. Moyer, acting head of the Meteorology Department, was promoted to department head status.

Dr. Carl W. Landiss was approved as Health and Physical Education Department head. He will replace Carl Tishler, who retires August 31.

The board approved a request for changing the title of executive officer Jack Keese of the Transportation Institute to director.

Promotion of associate professors to professor status was approved by the board for Earl S. Webb in agricultural education, Curtis L. Godfrey in soil and crop sciences, Teddy J. Hirsch in civil engineering, Thomas J. Kozik in mechanical engineering, E. B. Doran Jr. in geology and geography.

Also Edward S. Packenham in accounting, Donald G. Barker in education, Harry P. Krotor in English, David R. Bowers in journalism, D. C. Conway and R. M. Hedges in chemistry, R. J. Freund, R. R. Hocking and J. N. K. Rao in statistics, E. W. Ellett in veterinary medicine and surgery, and R. W. Moore in veterinary microbiology.

The board also approved the reappointment of Dr. Chris H. Groneman, Industrial Education Department head, as chairman of the A&M Athletic Council.

## A&M Trio Conduct Search For Buried Mountain Range

A Texas A&M geologist and two graduate students are searching an 80-mile stretch of Texas between Austin and College Station for a mountain range more than 250 million years old.

The range, an extension of the Ouachita Mountains in Arkansas and Southeast Oklahoma, are "many thousands of feet below the surface," explained Dr. James E. Case, former U. S. Geological Survey researcher and A&M assistant professor of geology.

Case, Edward C. Park of Columbia, Tenn., and Patrick Gordon of San Antonio are "sounding" out the chain by gravity and magnetic surveys. Measurements at one to two-mile intervals determine variations in the earth's gravitational and magnetic fields caused by distribution of heavy and light rocks.

By locating dense rock of the buried mountain line, Case and the geology graduate students are locating its steeper slopes and faults along its margins.

"I believe the axis of the chain is about 30 miles east of Austin," the professor said. "At Elgin, it is 5,000 to 10,000 feet below the surface." The "Texas Ouachitas" have been covered by "Younger" rocks in the intervening 250 million years.

More than 560 gravity determinations in an area 20 to 30 miles wide and 100 miles long have been made in the informal cooperative research with the University of Texas.

Case worked for USGS 11 years before he came to A&M in 1966. His most recent research centered on the Rocky Mountains, including geological mappings, gravity and magnetic studies of the Colorado plateau and Rockies.

"I'm in the field two days a week while Park and Gordon spend about a day a week on the work," Case said. "We'll get going in earnest in June. By the end of the summer, we'll have a thousand to 1,200 values."

He said the 270 to 300 million years old Pennsylvanian formations slope toward the continental shelf and may be 30,000 to 50,000 feet deep at College Station.

"We have reason to believe the Ouachita chain arches through San Antonio, South Texas, Mexico and outcrops near Marathon," the University of Arkansas graduate said.

Gravity, a tool for working big geological features, was used by Case in previous research for USGS.

While studying for his Ph.D. at the University of California at Berkeley, Case and Dorothy H. Radbruch prepared a detailed map of geologic hazard zones between San Pablo and San Lorenzo, Calif.

The Eastbay map, placed on public file in San Francisco, lists all known earthquake faults, major landslides and slide-prone areas. It pinpoints regions where USGS believes an earthquake could trigger huge landslides. Some of the areas contain hundreds of homes.

The scientist interested in tectonics — earth structural features as a whole — of Western Colombia in South America said the 1906 Frisco quake, the 1964 Alaska earthquake which he studied and volcanic activity in Peruvian and Chilean Andes are part of a mountain building process around the Pacific, from South America to Alaska.

"Such activity is not likely in South Central Texas since the mountain-building process has

been dead here since Permian time," he added. But Case pointed out that other geologists have noted unusual earth changes in the Houston area.

"Dr. Dewitt Van Sien (University of Houston geology department chairman) noted minor fault movement in the Houston area in his presentation at the A&M Texas Academy of Sciences meeting," Case noted.

"Some of the earth movement was along previous faults that were active before the country was populated," he pointed out.

He said it is possible that man-made factors may underlie Houston area earth shifts.

"Geologists proved several years ago that oil recovery in the Long Beach, Calif., area caused land to subside 30 feet."

which often has been dangerous and in some cases disastrous. The events in the Aggie Driving Skill Program are original, quick, challenging and designed to fascinate every driver, at the same time emphasizing vehicle safety and education, without written examination."

Student Chairman Mike Kloppe said that a number of prizes such as tachometers and gift certificates will be awarded to the best driver in each category.

Kloppe said complete preliminary announcements will be made through all news media although the event is pretty well known around the campus from the practice sessions already conducted. In addition to a number of trophies and write-ups we hope to go out around the state. At two national magazines I asked for articles about the event and the comparison abilities various classifications of drivers."

Fletcher said the hope of the project is to start a new, statewide driving activity on A&M and other university campuses.

He said that the approximate time for completion of the project is 20 minutes.

## — Sound Off —

Editor; The Battalion; Dear Sir;

I was delighted to read your impressive views on demonstrations here at A&M. (see Editorial April 18) Since I so com-

pletely understand your situation and views concerning the indifferent student body, I want to offer these ideas for your consideration, keeping in mind that during the Spanish Inquisition, anyone voicing an opinion contrary to that of the administration, was likely to be subjected to measures designed to improve their moral and spiritual enlightenment, and I understand that either expulsion or suspension can do this.

First, I have noticed an absolute absence of martyrs here at A&M, and since Timothy Leary already has his guaranteed, it is quite unlikely that he or anyone else will sweep down upon our fearless leaders to strike their inhibitions from them. If you are really serious about the need for really topnotch demonstrators, I am sure that the Favorite Son of the Postal Department, Allen Ginsburg, will be available (if you can stage the jailbreak to free him).

Secondly, why bother with drugs and LSD. We already have an abundance of banana skins, morning glory seeds, lettuce, and Shisa coffee which are available at a fraction of the cost of drugs and give the same results, so why should we raise our voices in discontent and spoil what little we have now.

David E. Larremore '70

Mink Art Supply Picture Frames 913 So. College Ave. - Bryan, Tex.

PALACE Bryan 2-8877

NOW SHOWING James Coburn In "IN LIKE FLINT"

QUEEN TONIGHT—7:15-9:15 P.M. ADULT ART SERIES "LOVE STATUE"

CAMPUS LAST DAY TODAY "GUNFIGHTER AT ABILENE"

STARTS TOMORROW RICHARD ELME JOHNSON-SOMMER DEADLIER THAN THE MALE

For all your insurance needs See U. M. Alexander, Jr. '40 221 S. Main, Bryan 823-3616 State Farm Insurance Companies - Home Offices Bloomington, Ill.

LET US ARRANGE YOUR TRAVEL... ANYWHERE IN THE U. S. A. ANYWHERE IN THE WORLD Reservations and Tickets For All Airlines and Steamships — Hotel and Rent Car Reservations Tickets Delivered —Call 822-3737— Robert Halsell Travel Service 1016 South College Avenue Bryan



## Survey Conducted Tonight

Volunteer workers will be conducting a county and city-wide health habits survey and crusade in Brazos County and the Bryan-College Station area tonight.

The survey, set up by the American Cancer Society, is being conducted in the state, county and city in conjunction with the society's annual crusade day.

Block workers will be working house-to-house in Bryan-College Station and additional workers will be working throughout the county.

Each Householder contacted will be requested to answer a brief questionnaire on a colored postcard. The cards, with no identifying marks will be sealed in an envelope and returned to the volunteer, or mailed directly to the Cancer Crusade headquarters in Austin, Texas.

The Survey is Health Education Survey of the American Cancer Society is for compiling facts for effectiveness of the Public Education Program to find out what the residents of Brazos County have done concerning their health in the last year and how familiar they are with the Public Education materials.

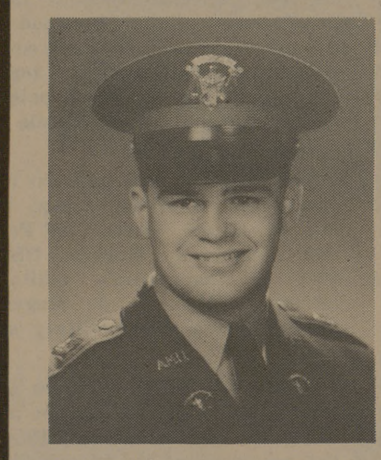
Brazos County Crusade Chairman this year is Mr. Sam Night. House to House Chairman is Mrs. Bib Pickens.

Mrs. Pickens has organized a network of Area Captains for the house to house campaign. Business Chairman for this year is Mr. John Van Ossall. They have been working diligently with Mrs.

John Godfrey, President of the Brazos County Cancer Society, to bring to Brazos County the most safe for the individuals of our educational and far-reaching crusade. They hope to have the best crusade ever.

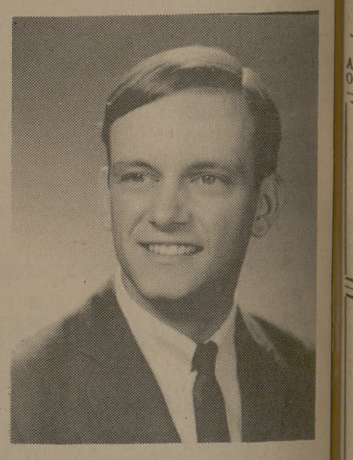
So, tonight when a crusade worker rings your door bell, please receive them so they can explain the material they bring to you, it may save your life, your friends life or a member of your families life.

The greatest obstacle on the road to conquering cancer is fear, and fear exists because of lack of education. Only through education can the Cancer Society tell people of things available to them today that will save their lives tomorrow.



## "SPECIAL"

One 8x10 Mother's Day Portrait reg. \$6.95 value, now only \$1.95 —selection from 4 proofs —offer good 'til May 14th



## A&M PHOTO SHOP

north gate

**THE BATTALION**

Opinions expressed in The Battalion are those of the student writers only. The Battalion is a non tax-supported non-profit, self-supporting educational enterprise edited and operated by students at a university and community newspaper.

Members of the Student Publications Board are: Jim Lindsey, chairman; Dr. David Bowers, College of Liberal Arts; John D. Cochrane, College of Geosciences; Dr. Frank A. McDonald, College of Science; Charles A. Rodenberger, College of Engineering; Dr. Robert S. Titus, College of Veterinary Medicine; and Dr. Page W. Morgan, College of Agriculture.

The Battalion, a student newspaper at Texas A&M is published in College Station, Texas daily except Saturday, Sunday, and Monday, and holiday periods, September through May, and once a week during summer school.

MEMBER The Associated Press, Texas Press Association

Represented nationally by National Educational Advertising Services, Inc., New York City, Chicago, Los Angeles and San Francisco.

The Associated Press is entitled exclusively to the use for republication of all news dispatches credited to it or not otherwise credited in the paper and local news of spontaneous origin published herein. Rights of republication of all other matter herein are also reserved.

Second-Class postage paid at College Station, Texas.

News contributions may be made by telephoning 846-6415 or 846-4910 or at the editorial office, Room 4, YMCA Building. For advertising or delivery call 846-6415.

Mail subscriptions are \$3.50 per semester; \$6 per school year; \$6.50 per full year. All subscriptions subject to 2% sales tax. Advertising rate furnished on request. Address: The Battalion, Room 4, YMCA Building, College Station, Texas 77845.

Publisher Texas A&M University  
Editor Winston Green Jr.  
Managing Editor Lee Moreno  
News Editor Bob Borders  
Reporters Pat Hill, Bill Aldrich, Randy Plummer, Bob Galbraith  
Sports Editor Gary Sherer  
Sports Writer Jerry Grisham  
Staff Photographer Russell Autrey

PEANUTS

THAT'S THE ELEVENTH BATTER IN A ROW YOU'VE WALKED CHARLIE BROWN...

IF YOU'RE GONNA WALK SOME MORE, WHY DON'T I RUN HOME AND MAKE UP SOME SANDWICHES? I MEAN I'M NOT DOING ANYTHING OUT THERE IN CENTER-FIELD ANYWAY, AND...

GET OUT OF HERE!

I DON'T UNDERSTAND FITCHERS... THEY JUST REFUSE TO TAKE SUGGESTIONS FROM OUTFIELDERS!

IT'S RIDICULOUS FOR ME TO WRITE TO A PEN-PAL IN PENCIL!

I'M GOING TO LEARN TO WRITE WITH A PEN IF IT KILLS ME!

DEAR PEN-PAL, I'D LIKE TO WRITE TO YOU...

SORRY... I GOT KIND OF CARRIED AWAY...