

Campus Job Interviews Reach Record High

ELECTION

(Continued From Page 1)

Bruce F. Baxter, Clarence T. Gore, Bernard Dawson, Keith A. Mullins, Barton M. Hamill, and Joseph W. Hely.

Candidates for office of the 1970 are:

President: Ronald L. Adams, James D. Black, Charles C. Emmons, Frank Neal Fore, Gerald Geistweidt, Raford Stanley Hargrove, William David Reed, Ronnie Shaw, James F. Stephenson, and John David White.

Vice-President: John G. Bancroft, John Bendele, John L. Cassell, James Dale Conway, James L. Dunn, Douglas Patrick Fontana, William Garner Fuller, Nominis Jackson, Robert S. Logan, David Gaines McCall, Richard Reese, Robert Stancel, and Michael John Welsh.

Secretary-Treasurer: Noble Boswell, John Dabney Cunningham, Mark Anthony Fairchild, Richard Oran Love, Stephen Harbert Simpson, and Tom Ben Weisshaupt.

Social Secretary: Carroll Leo Crawley, Paul Hilliard Edmonds, Robert E. Knox, Frank Douglas McDuff, William Hays Steele, Robert T. Smith, and James St. John III.

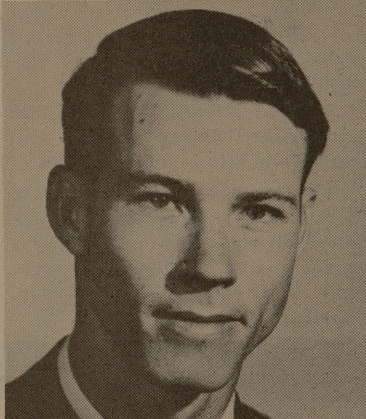
Memorial Student Center Representative: Barry Baverschlag, Larry Arnold Bowles, Dean Thomas Gshelman, Harry Kay Lesser, James T. Osborn, and Theron Gerald Snider.

Senior E.E. Major To Present Paper

Eugene H. Cloud, a senior electrical engineering major, will present a technical paper Friday in an area contest at Ruston, La.

John Denison, acting head of A&M's Electrical Engineering Department, said the contest is sponsored by the Institute of Electricity and Electronics.

Accompanying Cloud will be William L. Beasley, assistant professor of electrical engineering.



JERRY KRUSE

Kruse Is Picked As President Of Arts Association

Jerry Kruse of Snyder, a junior industrial education major, has been elected president of the National Association of Industrial Arts' College Students.

The organization, affiliated with the American Industrial Arts Association, has 1,400 members in 40 states.

Kruse, 21, was installed at a national meeting in Philadelphia. He will preside at the national convention next March in Minneapolis, Minn.

Winning offices is nothing new to Kruse. He will be installed June 1 as president of the Texas College Industrial Arts Association. And he is secretary of the Texas A&M Industrial Education Society.

Kruse has been a distinguished student two semesters at A&M. He has an overall grade point ratio of 1.81 on a 3-point scale and is a member of Iota Lambda Sigma, national honor fraternity for industrial education students.

Kruse's parents are Mrs. Bernell Chapman, 3813 Highland Drive, Snyder, and Hoyle S. Kruse, 1915 Huntington, Midland.

On-campus interviews have already been conducted by 563 companies this year, surpassing last year's record total of 553.

Mrs. Gladys Bishop, Placement Office secretary, said that 13 more companies are scheduled to conduct interviews this week. Approximately 50 more companies will be at Texas A&M before interviews are completed April 28.

Mrs. Bishop advised anyone who plans to graduate in May to set up some interviews.

"If they're not going right into the service, they better come over to the Placement Office and talk to the company representatives."

"Plenty of jobs are available and anyone who wants to work should be able to get a job," Mrs. Bishop observed.

Getting on the list to be interviewed should not be a problem, according to Mrs. Bishop. Some of the companies have only one or two students on their interview list while others are almost full. However, most of the representatives will do everything they can to talk to a promising

prospect. The reason for the expansion in interviewing is due to company expansion.

"Most of the companies are expanding and want to hire everyone their representatives talk to. This is in direct contrast to practice in the past. In former

years, companies recruited a great deal but they were looking only for the exceptional student. Now hiring firms believe they can train most college graduates to do the job they want done.

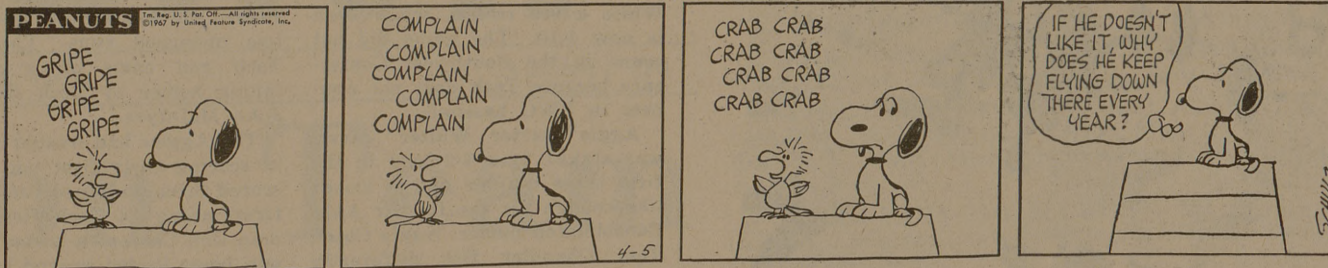
Many of the firms now conducting interviews were also at the Placement Office last fall.

Mrs. Bishop said that most of the companies' representatives interview two days in the fall and one in the spring. They try to see December and May graduates in the fall and tell the May graduates that they will be back in the spring if the person being interviewed wants to see them, again.

So many companies are interviewing now that not enough rooms are available in the Placement Office for conducting interviews. The offices of the various student publications have been pressed into use due to lack of space in the regular interview rooms.

By Charles M. Schulz

PEANUTS



FINAL CALL!

WE'RE MOVING

— Everything Goes —

BIG VALUE

ANY SIZE LISTED

7.75-14 7.35-14 7.75-15 7.35-15
7.50-14 7.00-14 6.70-15 6.50-15
6.50-13 7.00-13

COMPLETE SET

WHITEWALLS or BLACKWALLS

4 FOR \$49.49

Plus 37¢ to 55¢ per tire Fed. Ex. Tax, sales tax, and 4 trade-in tires of same size off your car.

Larger Sizes 4 for \$54.54

NO MONEY DOWN

Take months to pay!

Firestone

DLC-100® New Treads

RETREADS ON SOUND TIRE BODIES OR ON YOUR OWN TIRES

Same wrap-around tread design...same tread quality...as new 1966 Firestone original equipment tires!

Guaranteed like new tires!

NATIONWIDE "NO LIMIT" GUARANTEE

Our retreads, identified by medallion and shop mark, carry this FULL LIFETIME GUARANTEE against de-road hazard injuries encountered in everyday passenger car use for the life of the tread design in accordance with terms of our printed guarantee. Price of replacement pro-rated on original tread design wear and based on Firestone adjustment price for replacement retread at time of adjustment. Firestone adjustment price is intended to, but may not, represent approximate current average selling price, and is subject to change without notice.

BUY NOW...AT LOWER THAN MOST PASSENGER TIRE PRICES!

TRANSPORT Nylon TRUCK TIRES

Rugged 6-ply rated nylon construction. Long mileage Sup-R-Tuf rubber. Gear grip non-skid tread design.

Prices start at **\$13.95**

Exchange Size 6.00-16 Federal excise tax \$2.40

BRAKE ADJUSTMENT

\$119

MOST AMERICAN CARS

Our expert mechanics adjust your brakes, add fluid, and clean and repack front wheel bearings.

Marketing To Get New Prof Next Autumn

Barbara Jean Davis, a doctoral candidate at Northwestern University, will join the Texas A&M faculty this fall.

Dr. John E. Pearson, School of Business Administration head, said Miss Davis will be an assistant professor in the Marketing Department.

Miss Davis expects to receive her Ph.D. in marketing in August at Northwestern. She has master's and bachelor's degrees in marketing from the University of Arizona.

THE GREAT ISSUES COMMITTEE

Memorial Student Center

Presents

Space Fiesta 1967

MR. JACK N. JAMES

WEDNESDAY, APRIL 5, 1967, 8:00 P. M.
MEMORIAL STUDENT CENTER BALLROOM

UNITED STATES AIR FORCE
AEROSPACE PRESENTATIONS TEAM

Lt. Col. James S. Wall
Major Dannie R. Hoskins
Capt. David L. Fredrick

from
Air University, Maxwell A.F.B., Alabama

TOPIC: "THE U. S. SPACE PROGRAM"

Friday, April 7, 8:00 p. m., Memorial Student Center

THE PUBLIC INVITED—NO ADMISSION CHARGE

EXHIBITORS:

NASA—Manned Spacecraft Center
Lunar Orbiter Satellite
Spacesuits—Mercury, Gemini, Apollo
Gemini space capsule
Mercury space capsule—fullsize
Apollo space capsule
Saturn rocket
U. S. Air Force
Titan II missile—full scale
Space medicine
Photographic Society of America—space photographs
Office of Naval Research
Project Stratoscope
Project Skyhook
Nuclear Physics
Naval Research Laboratory
General Dynamics—F1-11
Southwestern Bell Telephone
Westinghouse—laser
LTV Aerospace Corporation
Naval Ordnance Laboratory
General Electric
North American Aviation
Texas A&M Activation Analysis Laboratory
Grumann Aircraft Engineering
McDonnell Company

FILMS:

"Apollo Lunar Mission Profile"
"Apollo/Saturn 202 Quick Look"
"Destination Moon"
"Extravehicular Activity—Gemini IV"
"Gemini XI"
"Living in Space"
"Missile From the Sea"
"National Space Program for 1970"
"ONE FOR ZERO"
"Progress Toward Mach 3"
"Project Gemini Mission Review 1965"
"Returns From Space"
"Roads to the Stars"
"Telestar"
"The Story of the X-15"
"Titan Rocket Power"

Films will be shown continuously throughout the day during the entire Space Fiesta '67 Week in the Memorial Student Center.

COMING LATER A WALK THROUGH TITAN II MISSILE

PUBLIC CORDIALLY INVITED

FIRESTONE STORES

Corner College Ave. and 33rd Streets Hours 8:00 A. M. to 6:00 P. M. Phone 822-0139 Bryan, Texas