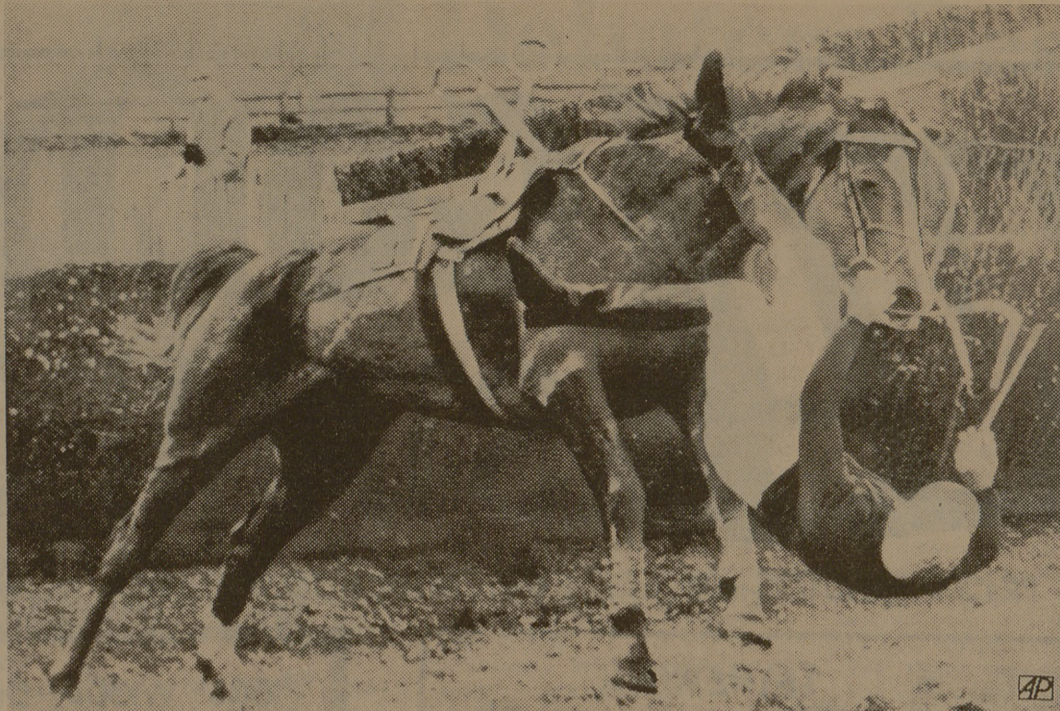


Aggie Baseballers Lose To Missouri

By GARY SHERER
Two eighth inning home runs by the Missouri Tigers were the big blows in an 8-5 loss for the Aggies at Travis Park Wednesday afternoon.
THE AGGIES had taken a 5-2 lead into the fateful eighth and were sailing along on the pitching of Ricky Schwartz. Schwartz, unfortunately, made two pitches too good and Missouri's Larry Ryan and Rudy Stroupe jumped on them for back-to-back round trippers.
It was Missouri's second straight victory and makes them 6-5, are meeting the Tigers again in a doubleheader today at Travis Park.
The Aggies had built up their lead due to some charity from the Missouri defense. Four of the five runs they had scored up to the eighth were unearned, as Mizzy's fielders were having trouble holding on to the baseball.
IN THE SECOND INNING, after Missouri had taken a 1-0 lead on Stroupe's first home run of the day, the Aggies came back with two tallies. With two outs, Dan Westerfield hit a routine ground ball to Stroupe. The Missouri pitcher, who went from hero to no hero in the game, let the ball go through. Westerfield was the Aggies' first baserunner.
After Westerfield had stolen second, Pete Maida lifted a fly to right. The Missouri rightfielder batted the ball and Westerfield headed home. Maida ended up on second.
CHUCK MALITZ hit another ball to Stroupe and the rangy shortstop could not come up with the ball and Maida made it to third. Schwartz's single scored Maida, putting the Aggies ahead 2-1.
In the fifth, two more errors by the unlucky Stroupe led to two more Aggie scores. In the seventh, the Aggies scored its only earned run on a double by Pat Rozypal and a single by Bob

Long, pinch-hitting for Westerfield.
This ended the Aggies scoring for the day. But with a three-run lead, it looked like Schwartz was home free.
IN MISSOURI'S half of the eighth, Schwartz was greeted by two straight singles. After a ground out moved the runners up a base a wild pitch plated Missouri's third run. Ryan then tied the game up with a three-run home run. Stroupe then made up for his four errors with his second home run and put Missouri in the lead to stay.
The Aggies loaded the bases in the eighth but could not score. Missouri added two more runs in the ninth.
SCHWARTZ TOOK the loss and Missouri's Mike McFarland got credit for the win in relief.
In today's doubleheader Walter Varvel will pitch in the first game, with Tommy Chiles possibly going in the second game.
The two games are set for seven innings each.
Following this series with Missouri, the Aggies will next host the Baylor Bears in a Southwest Conference game slated for 2 p.m. Saturday afternoon at Travis Park.



OGLE COMES A CROPPER
M. B. Ogle tumbles from his mount, "Briedy's Brother," as the animal falls at the next to the last fence in the Cowdray Hunt Steeplechase in Midhurst, England. (AP Wirephoto by cable from London.)

Grapefruit League Baseball Roundup

By THE ASSOCIATED PRESS
The Atlanta Braves continued to have one-run trouble Wednesday, losing their eighth exhibition game by that margin, 3-2 to Houston when the Astros' Joe Morgan hit an eighth inning homer.
Larry Dierker of Houston and Atlanta's Tony Cloninger each

worked the first seven innings and yielded two runs. Doug Rader also hit a bases-empty homer for the Astros.
Donn Clendenon's two homers, plus two 10th-inning runs on three singles and a sacrifice fly, paced Pittsburgh past the Chicago White Sox 6-4. Bob Veale worked the first six innings for

the winners, giving up Ken Berry's grand slam homer in the third.
Harmon Killebrew hit his fifth homer of the spring, a leadoff shot in the fourth, as Minnesota blanked Washington 5-0 behind the pitching of Dave Boswell, Jim Pery and Al Worthington.

DO YOU KNOW...
that the American-Amicable Family Plan can insure your entire family in one policy and for one low premium?
American Amicable
LIFE INSURANCE COMPANY
EXECUTIVE OFFICES, WACO, TEXAS
Jim Bice
Oakwood Professional Bldg. Bryan, Texas VI 6-7963

CAN YOU ACCEPT A CHALLENGE?
LEARN A NEW DIMENSION IN HUMAN RELATIONS!
Salesmanship Club Boys Camp of Dallas offers, under skilled trained leadership, an exceptional opportunity in working with emotionally damaged boys from 8 to 15.
Qualifications: 2 years or more of college, age 22 to 32, unmarried, free to travel, liking for outdoor living.
Full benefits, regular raises, scholarships for continued study, opportunity for advancement.
Contact: Billy Trigg, Executive Director
Dallas Salesmanship Club Camp for Boys
4830 Tremont St., Dallas, Texas
Telephone: TAYlor 3-2981

Mink Art Supply
Picture Frames
913 So. College Ave - Bryan, Texas

PALACE
Bryan 2-8874
NOW SHOWING
"PARIS BURNING"

CAMPUS
TODAY THRU SAT.
"FAHRENHEIT 451"

QUEEN
STARTS TOMORROW
"I, A WOMAN"
Features 7 p.m.-9 p.m.

CIRCLE
TONIGHT at 6:50
"FIRST TO FIGHT"
and
"SUSAN SLADE"
Both in Color

SKYWAY DRIVE-IN THEATRE
OPEN UNDER 17 YEARS FREE
TONIGHT at 6:50
"EASY COME, EASY GO" and
"RED TOMAHAWK"

Avocados
Calavo. Large Size Fuerte. **10¢** Each



Red Potatoes Economy. **20 Lb. 69¢**
Bananas Everyday Low Price. **2 Lbs. 29¢**
Papayas Large Size—Each **39¢**
Coconuts Large Honduras—Each **19¢**
Celery Large Stalks—Each **25¢**
Radishes 6-oz. Cello Pack **9¢**

Pineapple Sugarloaf. Large—Each **39¢**
Golden Delicious Apples Washington, Extra Fancy—Lb. **21¢**

Round Steak
Full Cut. USDA Choice Grade Heavy Beef—Lb. **69¢**

Beef Rump Roast **69¢**
USDA Choice Grade Heavy Beef—Lb.
Swiss Steak Or Boneless Round, Full Cut. USDA Choice Heavy Beef—Lb. **79¢**
T-Bone Steak Or Club. USDA Choice Heavy Beef—Lb. **\$1.19**
Boneless Roast *Loin Tip *Rump *Top Round, USDA Choice Heavy Beef—Lb. **98¢**
Ground Beef Lean and Juicy—Lb. (2-Lb. Club-Pak Safeway, 99¢) **49¢**
Sliced Bacon Capitol, Fix Many Ways—1-Lb. Pkg. **56¢**
Pork Chops Quarter Loin sliced into Pork Chops—Lb. **66¢**

Pork & Beans Van Camp—16-oz. Can **2 for 29¢** Why Pay 2/35¢
Velkay Shortening 3-Lb. Can **59¢** Why Pay 75¢
Harvest Blossom Flour 5-Lb. Bag **39¢** Why Pay 45¢
Lucerne 2% Homo Gallon Carton **73¢** Why Pay More?
Coldbrook Margarine 1-Lb. Print **16¢** Why Pay 2/39¢
Facial Tissue Truly Fine, Assorted Colors. 200-Count Box **19¢** Why Pay 25¢

Hidden Magic (\$1.79 Value)
Hair Spray 20¢ Off Label **79¢**
13-oz. Can
Toothbrush Profile, Adult, 20¢ Off Label **49¢** 69¢ Value
Tooth Paste Colgate, Family Tube **69¢** 95¢ Value
Vitamins Safeway, Multiple, 100-CT, Bottle **99¢** \$1.09 Value
Shampoo Head & Shoulders, 2.4-oz. Jar **79¢** \$1.00 Value
Prell Concentrate Shampoo, 3-oz. Tube **79¢** \$1.00 Value
Clairol Shampoo, Blue or Green, 4-oz. Bottle **67¢** 89¢ Value
Brylcreem Hair Dressing, 4 1/2-oz. Tube **79¢** \$1.09 Value
Schick Blades, Super Stainless, Double Edge, 10-CT, Pkg. **\$1.29** \$1.45 Value
Skin Bracer Mennen, 4 1/2-oz. Bottle **63¢** 79¢ Value
Baby Lotion Mennen Magic, 7-oz. Bottle **87¢** \$1.00 Value

FRYERS **29¢**
USDA Inspected, Grade "A" Whole—Lb. (Cut-Up USDA Inspected—Lb. 35¢)

Special!
Maxwell House COFFEE
Regular or Drip—1-Lb. Can (With \$5.00 Purchase) Excluding Cigarettes **29¢**

Mix or Match
Campbell Soup
*Cream of Chicken *Chicken Noodle *Cream of Mushroom—10 1/2-oz. Can
7 for \$1

EVERY DAY LOW PRICES ON BAKING INGREDIENTS
Imperial Cane Sugar 5-Lb. Bag **49¢** Why Pay 58¢
Pillsbury Best Flour 5-Lb. Bag **63¢** Why Pay 67¢
Yellow Corn Meal Aunt Jemima, 5-Lb. Bag **48¢** Why Pay 49¢
Cake Mixes Duncan Hines, Assorted, Regular Box **39¢** Why Pay 41¢
Crisco Shortening 1-Lb. Can **35¢** Why Pay 39¢

Special!
Bel-air Orange Juice
Frozen—6-oz. Can **14¢**
(12-oz. Can... 28¢)

SPECIAL!
Libby **Vienna Sausage** 4-oz. Can
5 for \$1

BIG BUY
Melrose **Soda Crackers** 1-Lb. Box
19¢

SPECIAL
Giant Box **Tide Detergent** (7¢ Off Label)—49-oz. Box
39¢
WITH \$2.50 PURCHASE

Rye Bread 19¢
Skyark Jewish—1-Lb. Loaf
Rum Buns 27¢
Mrs. Wright's (2¢ Off Label)—11-oz. Pkg.

SAFEWAY
© Copyright 1960, Safeway Stores Incorporated.

Beverley Braley...tours...travel
... offering a 30-day open Charge Account and accepting all Airline Credit Cards, American Express... Diners Club Cards... etc. Tickets delivered to your home or office.
MEMBER **ASTA** SOCIETY OF TRAVEL AGENTS
The Professional Travel Agency... A Bonded ASTA Agent
CALL OUR PROFESSIONAL TRAVEL CONSULTANT—BRYAN 823-8188—MEMORIAL STUDENT CENTER, A&M UNIVERSITY CAMPUS 846-7744
Airline Reservations and Ticketing... Student Rate... Air Tickets... Steamship and Cruise Reservations... Custom Planned Foreign Tours... Authorized Representative Of All Tours... Foreign Car Purchase... and Rental... Convention and Conference Reservations