

Smith Is Named To Personnel Staff

H. Ray Smith has been named assistant director of personnel at Texas A&M, announced Clark C. Munroe, Personnel Department director.

The office maintains records, supervises university payroll, handles benefit-insurance programs and retirement procedures.

The first voice radio signals across the Atlantic Ocean were sent from the Eiffel Tower to Arlington, Va.

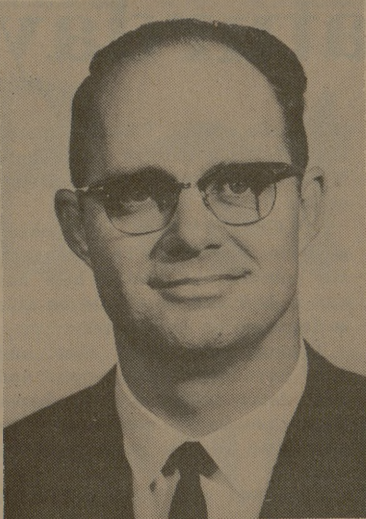
and supervises a central employment office for non-academic personnel.

An A&M journalism graduate of 1955, Smith came from Lubbock where he was industrial relations representative for Litton Industries. The Bryan High School graduate served in the Army two years after finishing studies at A&M. He was personnel department training instructor for Texas Electric Service at Odessa seven years, then joined

the Lubbock firm.

Smith, 34, served in numerous civic organizations in Odessa and Lubbock. He was president of the Permian Basin Kiwanis Club and active in toastmasters and advertising clubs. He was a Chamber of Commerce member in both West Texas cities.

Ray, his wife Naomi and three children reside at 500 Woodson Drive in Bryan. The family is member of the Central Baptist Church.



H. RAY SMITH

Abbott To Speak Before Banquet

Dr. John P. Abbott, a distinguished professor in the Department of English, will be the guest speaker at the Annual Engineering Awards Banquet next month. His topic will be "The Challenge of Change."

The April 10 dinner will be in the Memorial Student Center Ballroom, under the sponsorship of the Student Engineers Council with the cooperation of the Texas Society of Professional Engineers and the Technical Society.

Tickets may be purchased from the president of the Technical Society at \$3 each. The deadline for buying tickets is April 1.

Girl Watchers' Corner



KATHY HELDMAN

Kathy is a freshman applied music major from Caldwell. The 18-year-old brunette enjoys swimming, singing, dancing, and horseback riding. She also lists Aggies as one of her hobbies.

BATTALION CLASSIFIED

WANT AD RATES
One day - 4¢ per word
14 days - 35¢ per word
Minimum charge - 50¢
Classified Display
30¢ per column inch
each insertion
DEADLINE
4 p.m. day before publication

FOR RENT
STATE MOTEL, rooms and kitchen, day and weekly rate, near the University, 846-4100. 2622fn

FAIRWAY APARTMENTS
• Two bedrooms
• Furnished or unfurnished
• Carpeted and draped
• TV, cable connections
• Close to A&M, elementary schools and golf course
• Central air and heat
• Built in stove, refrigerator and disposal.
From \$99.50
3300 S. College
Resident Mgr. Apt. 3-B
844-4713 822-8022

Normandy Manor Apartments
-Central air conditioning and heat
-Colored-electric appliances
-Swimming pool
-Large patio area
-Drapes and carpeting
-Carpets and laundry facilities
-Furnished and unfurnished
-1 - 2 bedroom apartments
-Walking distance to downtown
-Located near churches and schools
All Utilities Paid
Manager-Apt. No. 9-Mrs. Mann
823-8492 8651fn

THE BRYAN ARMS APARTMENTS
"Congenial Living"
Separate Adult & Family Areas
"Children Welcome"
Model Apts. Open For Inspection
From \$120 - All Utilities Paid
1602 S. College Avenue
Resident Manager - Apt. 55
Phone 823-4250
Make Your Deposit Now 8651fn

Two bedroom furnished apartment, central air and heat, brick, 910 Second Street, CS, two blocks from campus, available March 1, 823-8181. \$110 without utilities, 115 with utilities. 4128z

VICTORIAN APARTMENTS
Midway between Bryan & A&M University
• All General Electric built-ins
• 1 & 2 bedrooms with 1 or 1 1/2 baths
• Central heat & air
• Large walk-in closets
• Beautiful courtyard with swimming pool
• Carpets & Drapes
• Carpets & laundry facilities
• Furnished or unfurnished
• Resident manager, Apt. 1
401 Lake Phone 822-2035 1541fn

SOSOLIK'S TV & RADIO SERVICE
Zenith - Color & B&W - TV
All Makes - TV - Repaired
713 S. Main 822-1941

BLOCKER TRANT INCOME TAX
4015 Texas Ave. - 846-7842

Havoline, Enco, Amalie, Conoco 30¢ qt.
We stock all local major brands. Where low oil prices originate. Quantity Rights Reserved.
Parts Wholesale Too
Filters, Oil, Air - Fuel
10,000 Parts - We Fit
96% of All Cars - Save 25 - 40%
Brake Shoes \$2.98 ex.
2 Wheels - many cars
Auto trans. oil 25¢
AC - Champion - Autolite plugs
Tires - Low price every day - Just check our price with any other of equal quality.
All approved Credit Cards accepted
Your Friedrich Dealer
Joe Faulk Auto Parts
220 E. 25th Bryan, Texas
JOE FAULK '32
21 years in Bryan

FOR SALE
GARAGE SALE - Saturday, 300 Park Place. Nice dinette set, desk, bedroom suit, rocker, clothes and odds & ends. 4191z

Three bedroom, two bath, brick home, panel den, carpeting, central air and heat, two blocks from consolidated schools, 402 Glade, 846-6825. 4192z

1962 Ford Galaxie, chestnut and white, cruise-o-matic, power steering, brakes, air conditioning, one owner, 47,000 miles, best offer over \$275. Phone 846-4586. 4174fn

One large window water cooling unit, excellent condition, \$50. See at A-6-W C.V. 4173z

Genet mule, 3-year-old unbroken, \$75. Call 822-3980.

Gentle saddle mare, safe for children, smokey dun. Also 16 ft. Goose Neck trailer with head stall, brakes and lights, (new). Call 822-3980.

For all your paint and lumber needs see your local lumber dealer, MARION PUGH LUMBER CO. Rejet slab doors for desk tops, masonite, table legs, celotex, upson board, moldings of all types and cut plywood. Four blocks south of Kyle Field on Hwy. 6, Ph. VI 6-5711. THE MARION PUGH LUMBER CO. 8966fn

PIANOS ORGANS BAND INSTR.
Back to school music sale. New pianos, \$15 per month. Used pianos, \$10 per month. New band instr., \$10 per month. Used pianos & band instr., \$95 and up. Tuning, repairs, and refinishing.
B & M Music Co.
213 W. 26th - Bryan 822-5226 3311fn

SPECIAL NOTICE
Save up to 40% auto parts, tires, batteries, seat covers, mufflers, tail pipes and accessories. SEE WHITE AUTO STORES, College Station, VI 6-5626.

WE BUTCHER LIVESTOCK
For Your Food Locker and Home Freezer.
Satisfaction Guaranteed
Hanson's Frozen Foods Inc.
Bryan, Texas 3411fn

CHILD CARE
Aggie wife will baby sit any time day or night. 846-7429.
Chilu care all ages. 846-8151. 3411fn
Gregory's Day Nursery - 846-4005. 2181fn

HELP WANTED
Aggie wife, waitress, day shift, walking distance College View and Hensel apartments. Dutch Kettle, call Manager for appointment. 846-9927. 418z

FOUND
Man's wrist watch found on tennis court owner may obtain by calling 846-3607. 418z

\$ CASH \$
Personal Loans to Students
Prompt Confidential Service
UNIVERSITY LOAN COMPANY
317 Patricia (North Gate)
Tel; 846-8319

OTIS McDONALD'S
Typewriters • Adding Machines • Calculators • Cash Registers • Electrostatic Dry Copiers
Sales • Service • Rentals
Norden dictating equipment
429 South Main Street • Phone 822-1328
Bryan, Texas 77802

GM Lowest Priced Cars
\$49.79 per mo.
With Normal Down Payment
OPEL KADETT
Sellstrom Pontiac - Buick
2700 Texas Ave. 26th & Parker
822-1336 822-1307

• Watch Repair
• Jewelry Repair
• Diamond Senior Rings
• Senior Rings Refinished
C. W. Varner & Sons Jewelers
North Gate 846-5816

TYPEWRITERS
Rentals-Sales-Service
Terms
Distributors For:
Royal and Victor
Calculators &
Adding Machines
CATES TYPEWRITER CO.
909 S. Main 822-6000

WANTED TO RENT
One or two bedroom home in country. Wanted sometime within next three months. Call 846-4528, noon or after 5:00 p. m. 4182z

Moving to Bryan-College Station area last of May. Want to rent a house in the country not more than 10 miles out of city. Contact: Gary Underwood, 1808 E. Locust, Victoria, Texas 77901. 4161fn

LOST
Black and white male cat, area of Gibson's. Call 846-4283 after 5:00 p. m. 4164z

OFFICIAL NOTICE
Official notices must arrive in the Office of Student Publications before deadline of 1 p. m. of the day preceding publication.

ENGLISH PROFICIENCY EXAMINATION
The English Proficiency Examination required of all junior students majoring in Education or in Psychology will be offered from 3:00 to 5:00 p. m. on April 13 (Thursday) and again from 8:00 to 7:00 p. m. the same day. Students may take the examination at either time by reporting to Academic 108. Examinees should bring pen, pencil, dictionary and composition paper. 4171z

The Department of Economics will give an English Proficiency Test for Economics Majors on Tuesday, March 28, from 3:00 to 5:00 p. m. in Room 115 Nagle. The examination must be taken not later than the spring semester of the junior year and must be passed by the student in order to qualify for candidacy for a degree. Please come by the Economics Department before March 24 and notify one of our secretaries that you plan to take it. 8165z

All International Persons
Officials of the Internal Revenue Service will be on the Campus to assist international persons in the preparation of their 1966 Income Tax returns. If you need assistance, you may meet with these officials on either of the following dates: Tuesday, 21 March 1967, from 1:15 p. m. to 4:15 p. m.
Wednesday, 22 March 1967, from 1:15 p. m. to 4:15 p. m.
Place: Room 101, YMCA
Bring with you a copy of your last year's income tax return (if available), the W-2 form from your employer, and your passport. You should also be prepared to present evidence you had permission to be employed.
Robert L. Melcher
Foreign Student Advisor

Applications for degrees are now being accepted in the Registrar's Office from all students who expect to complete their degree requirements by May 1967. Candidates for advanced degrees must file their applications with both the Registrar's Office and the Graduate Dean's Office. The deadline date for filing application is March 1, 1967.
H. L. Heaton
Director of Admissions and Registrar

"SPRING AWARD SCHOLARSHIPS"
Application forms for Spring Award Scholarships may be obtained from the Student Financial Aid Office, Room 303, YMCA Building during the period February 13 - March 31, 1967. All applications must be filed with the Student Financial Aid Office by not later than 5:00 p. m. April 1, 1967. Late applications will not be accepted.

NOTICE - PRE-VETERINARY MEDICINE STUDENTS
Pre-veterinary medicine students who expect to qualify as applicants for admission to the professional curriculum of the College of Veterinary Medicine in September 1967 may secure application forms in the Registrar's Office beginning Monday, February 20, 1967. May 1, 1967 is the deadline for filing applications and transcripts with the Registrar.
H. L. Heaton, Director of Admissions and Registrar 3961z

The 1966-67 official directory of offices, staff and students is now available. You may send your orders (interdepartmental orders, etc.) to the Student Publications Office, YMCA Building. The price is \$1.00 per directory.

TRANSMISSIONS REPAIRED & EXCHANGED
Completely Guaranteed
LOWEST PRICES
HAMILL'S TRANSMISSION
118 S. Bryan - Bryan - 822-4874

AUTO INSURANCE FOR AGGIES:
Call: George Webb
Farmers Insurance Group
3400 S. College 822-8651

HOME & CAR RADIO REPAIRS SALES & SERVICE
KEN'S RADIO & TV
303 W. 26th 822-2819

FREIGHT SALVAGE
• Brand Name Furniture
• Household Appliances
• Bedding
• Office Furniture
• Plumbing Fixtures
All damaged items restored to full utility by our repairs department.

C & D SALVAGE CO.
32nd & S. Tebor Streets - Bryan

AUTO REPAIRS
All Makes
Just Say:
"Charge It!"
Cade Motor Co.
Ford Dealer

Campus Security Is On The Ball

By MIKE PLAKE
A poll over the last four months showed that A&M Campus Security policemen have written more than 3,000 traffic and parking tickets on the A&M campus.
"At \$2 a ticket, you can imagine the amount of money involved," C. E. Bolton, assistant chief, said.
"These figures don't include the tickets we void when they are appealed for good reasons, or the courtesy tickets we write to inform visitors of current parking regulations.
"We don't charge for these," he said.
Bolton remarked that February had the largest total so far, with

Jobs Available As Cannery Workers, Tractor Operators

A summer in the cool climate of Wisconsin can be had by 75 students as farm tractor operators and cannery workers.
Salary for the tractor operators will be \$1.64-\$1.75 per hour, and at least \$1.43 for the cannery workers.
The places of employment will be Beaver Dam, Fox Lake, Ripon, and Rosendale, Wisconsin.
Transportation costs will be advanced according to the need of the worker. The transportation costs will be refunded upon completion of the agreed season. Housing will also be furnished at no cost to the employee.
Further information can be obtained at the Texas Employment Commission at 409 N. College Ave. in Bryan. Friday is the deadline for applying for one of these positions.

1235 parking violations, 17 moving violations, and 98 overdue penalty tickets, adding to \$3,011 for that month.
"It's really a bad situation," he said. "Our parking facilities are not necessarily the best, but the whole situation could be much improved if the parking regulations were followed."
Bolton said the money from the tickets went into a fund to pay for on-campus parking lots, and one patrolman's salary.
"Because of a state law, you cannot use state appropriated funds to provide parking lots or patrolmen to watch these lots," Ed Powell, Campus Security chief, said.
However, the problem of parking violations does not lie only with the students and faculty members.
"The way the university is growing, we will probably have to limit parking in the academic core of the campus to full-time employees, not including faculty members, in the future," Bolton said.
The two men agreed on several possibilities that would alleviate the traffic problem.
"We might install a station at each main entrance similar to those on the University of Texas campus, to keep students or unauthorized people from driving into the center of the campus to park their car," Powell noted.
"It would be a good idea to complete the concrete sidewalks to all of our present parking lots, too," Bolton added. "Then later, some sort of canopy could be built, providing a weather-proof path to and from the parking areas."

The Church.. For a Fuller Life.. For You..

ST. MARY'S CATHOLIC
Sunday Masses - 7:30, 9:00 and 11:00
OUR SAVIOUR'S LUTHERAN
8:15 & 10:45 A.M. - The Church at Worship
9:30 A.M. - Bible Classes For All Holy Communion - 1st Sun. Ea. Month
CHRISTIAN SCIENCE SOCIETY
9:30 A.M. - Sunday School
11:00 A.M. - Sunday Service
11:00 A.M. - 2 P.M. - Tues. Reading Rm.
7:00 - 8:00 P.M. - Wed., Reading Room
8:00 P.M. - Wed. Evening Worship
A&M CHURCH OF CHRIST
8:00 & 10:00 A.M. Worship
9:00 A.M. - Bible Study
5:15 P.M. - Young People's Class
6:00 P.M. - Worship
7:15 P.M. - Aggie Class
9:30 A.M. - Tues. - Ladies Bible Class
7:15 P.M. - Wednesday - Bible Study
UNIVERSITY LUTHERAN
(Missouri Synod)
10:00 A.M. - Bible Class
11:00 A.M. - Morning Worship
7:30 P.M. - Wednesday Vesper
CHURCH OF THE NAZARENE
9:45 A.M. - Sunday School
10:45 A.M. - Morning Worship
6:30 P.M. - Young People's Service
7:00 P.M. - Preaching Service
FIRST BAPTIST
9:30 A.M. - Sunday School
10:45 A.M. Morning Worship
6:10 P.M. - Training Union
7:20 P.M. - Evening Worship
6:30 P.M. - Choir Practice & Teachers' meetings (Wednesday)
7:30 P.M. - Mid-week Services (Wed.)
FIRST CHRISTIAN CHURCH
Homestead & Ennis
9:45 A.M. - Sunday School
10:45 A.M. - Morning Worship
6:30 P.M. - Young People
GRACE BAPTIST CHURCH
2505 S. College Ave., Bryan
An Independent Bible Church
9:15 A.M. - Sunday School
11:00 A.M. - Morning Worship
7:30 P.M. - Evening Worship

CALENDAR OF CHURCH SERVICES

ST. THOMAS EPISCOPAL
906 Jersey Street, So. Side of Campus
Rector: William R. Oxley
Asst. - Rev. Wesley Seeliger
8:00 A.M. & 9:15 A.M. Sunday Services
SECOND BAPTIST
710 Eisenhower
9:45 A.M. - Sunday School
11:00 A.M. - Church Service
6:30 P.M. - Training Union
7:30 P.M. - Church Service
A&M PRESBYTERIAN
7-9 A.M. - Sun. Breakfast - Stu. Ctr.
9:45 A.M. - Church School
11:00 A.M. - Morning Worship
6:00 P.M. - Sun. Single Stu. Fellowship
7:15 P.M. - Wed. Student Fellowship
6:45 A.M. - Fri. Communion Service
Wesley Foundation
FAITH CHURCH UNITED CHURCH OF CHRIST
9:15 A.M. - Sunday School
10:30 A.M. - Morning Worship
7:30 P.M. - Evening Service
COLLEGE HEIGHTS ASSEMBLY OF GOD
9:45 A.M. - Sunday School
11:00 A.M. - Morning Worship
6:30 P.M. - Young People's Service
7:30 P.M. - Evening Worship
A&M METHODIST
8:30 A.M. - Morning Worship
9:45 A.M. - Sunday School
10:55 A.M. - Morning Worship
6:30 P.M. - Campus & Career Class
6:30 & 6:00 P.M. - MYF Meetings
UNITARIAN FELLOWSHIP
305 Old Highway 6, South
10:00 A.M. - Church School
8:00 P.M. - Adult Service
CHURCH OF JESUS CHRIST OF LATTER DAY SAINTS
26th East and Coulter, Bryan
8:30 A.M. - Priesthood meeting
10:00 A.M. - Sunday School
6:30 P.M. - Sacrament Meeting
CENTRAL CHRISTIAN CHURCH
3205 Lakeview
9:45 A.M. - Bible School
10:45 A.M. - Morning Worship
6:00 P.M. - Youth Hour
7:00 P.M. - Evening Worship

Mink Art Supply
Picture Frames
923 So. College Ave. - Bryan, Texas
Puritan Sportswear
at
Diva Starnes mens wear
100 NORTH MAIN - TEL. 846-4242 - BRYAN TEXAS

Hillier Funeral Home
BRYAN, TEXAS
502 West 26th St.
PHONE TA 2-1572
STUDENT PUBLICATION
Campus and Circle Theatres
College Station
The Exchange Store
"Serving Texas Aggies"
Bryan Building & Loan Association
BRYAN
Lilly ICE CREAM AND MILK

TEXAS A&M UNIVERSITY LIBRARY