

# Master Plan Set By System Board

Texas A&M is preparing a two-pronged Master Plan designed to streamline future growth and serve as a possible model for other institutions of higher education.

Researchers will make growth predictions for a 10-year period. The Master Plan is a cooperative venture of the Texas College and University System Coordinating Board and Texas A&M.

Research is supported by a \$48,000 Coordinating Board grant matched by A&M.

Dr. Wayne C. Hall, A&M's academic vice president and graduate dean, has charge of the planning effort. Dr. Charles Pinnell, associate graduate dean, is project director for the parallel studies.

THE MASTER Plan further integrates and implements objectives of the Blueprint for Progress developed in 1962 for A&M.

Dr. Hall said the new studies will develop management strategy to attain specific program goals. Priority for construction of additional buildings, projected use of utilities and traffic planning, and evaluations of necessary financing in all these areas are aims of the research.

A&M's findings will be published and presented to the Coordinating Board in February, 1968. Plans call for annual up-

dating to meet changing needs. UNIVERSITY goals in construction, research and extension are to be established by A&M Board of Directors following preliminary goal studies by a steering committee, approval by President Earl Rudder and the executive committee.

Once established, over-all plans will be utilized by the various colleges and departments to develop specific plans of action.

Development of plans for orderly growth of the university in terms of land use, traffic, buildings and utilities is included in the second stage of the reevaluation physical plant planning.

Dr. Pinnell said the second stage will involve the School of Architecture, the Texas Transportation Institute, and the Physical Plants Department.

THIRD PHASE of the research is a study of long range financial resources to carry out the programs and facilities recommended in the preceding phases.

The project's steering committee includes W. C. Freeman, T. D. Cherry and A. D. Suttle Jr., A&M vice presidents; Dr. C. V. Wootan, associate executive officer of the Texas Transportation Institute; John E. Hutchins, A&M Agricultural Extension Service director; and James L. Gardner, architecture professor.

# Great Issues Sets Speech By Time Magazine Staffer

John Scott, former correspondent, lecturer, author and special assistant to the publisher of Time Magazine, will speak March 8 at 8 p.m. in Guion Hall.

"Hunger — Must We Starve," the subject of research for his trip through the Middle East and India during the summer of 1966, will be the topic for his speech. He is the first of a series of Memorial Student Center Great Issues Speaker Series.

For the past 15 years, Scott has traveled to all areas of the world for Time Magazine to areas of major news importance. He spends three or four months each summer gathering information.

AFTER HIS return, he writes a book-length report to the Time publisher. Then he tours the

country and makes as many as 200 speeches to business and academic groups.

During his 15 years of coverage, Scott has visited Texas A&M three times. His reports have included coverage of the Suez crisis, the Common Market, Soviet economic crisis in China and reports on Latin America and the Alliance for Progress.

He has interviewed world leaders, economists, professors, politicians, artists, writers and hitchhikers in his behind-the-scenes reports.

FLUENT IN four languages — English, French, German and Russian — Scott has spoken to educators and community leaders in Europe, the Far East, South America, Canada and the U.S.

Scott began work for Time in Japan in 1941. He became contributing editor in 1943 and later covered the State Department. He headed the Time-Life bureau until the close of the war and then reopened Time's central European Bureau in Berlin.

Born in Philadelphia, he attended school in the U.S. and Switzerland. He spent two years at the University of Wisconsin, but during the Depression, he left college to see the world and write.

HE SPENT five years in Russia working in industrial plants and learning the language. He served three years in Moscow as correspondent to HAVAS, French news News-Chronicle, before coming to agency, and later for the London Time.

During 1940-41, he traveled through Russia writing reports. Two weeks before the German invasion, he was expelled for writing of a possible Russia-German split.

Five books he has written about his travels are "Behind the Urals," "Duel for Europe," "Europe in Revolution," "Political Welfare," and "Democracy is Not Enough."

Admission is \$1 for the general public, 50 cents for Aggie wives and public school children and free for Aggies with activity cards.



JANE O'KELLY

Jane, 18, is a journalism major at Texas Woman's University. As a freshman, she works in the school print shop and on the student newspaper, The Lass-O. She enjoys bike riding and other outdoor activities. Her hometown is Ft. Worth.

## Upchurch Speaks On USDA Work

Dr. Louis Upchurch, director of the Economic Research Service of the USDA, met here this week with the staff of the Department of Agricultural Economics and Sociology.

Upchurch, who received a Master's degree from A&M in 1937, explained the role of social sciences in the research program of the USDA, according to Dr. Ty-

rus Timm, head of the department.

Upchurch said the Economic Research Service works mainly in the seven divisions of marketing economics, farm production economics, foreign regional analysis, foreign development and trade, economic development, economic and statistical analysis and natural resource economics.

# After graduation, what? Will you begin your career as an engineer or scientist or return to school for an advanced degree?

## You can do both at NOL

If you are an engineer in the top third of your class or a scientist in the top quarter of your class, NOL offers you the opportunity to begin your career in one of the world's great laboratories and, at the same time, go ahead with your plans for graduate study.



NOL is a laboratory in the true meaning of the word, and one of the largest and best-equipped laboratories in the world. It is the nation's leading R&D establishment for Anti-Submarine Warfare (ASW), the Navy's principal high speed aeroballistics activity, and a leader in the development of new air and surface weapons. The spectrum of research at NOL ranges from nuclear effects to acoustics to explosives and materials. At NOL, weapons development is carried through from inception to design to prototype test and development. Since 1950, NOL has completed 209 new weapons and devices such as SUBROC, nuclear depth bombs, mines, projectile fuzes, underwater detection systems, and components and design data for POLARIS, TARTAR, TALOS, TERRIER, ATLAS and TITAN missiles. A civilian staff of over 3,000 people includes more than 1,000 professional engineers and scientists—experts with national and international reputations. Extensive and unique facilities embrace wind tunnels operating to Mach 17, hypervelocity ballistic ranges, the world's most exceptional hydroballistic facility, shock tunnels, 300g centrifuge . . . multi-million-dollar experimental facilities.

Here is your opportunity. Each year, NOL interviews outstanding engineering and science graduating students. Selects the handful that seems to be really creative. Takes them to its beautiful 875-acre "campus" (the front yard is a golf course) in the rolling hills of Maryland near the Nation's Capital. Puts them through an optional one-year professional development course with rotational assignments to various areas within the Laboratory to prepare them for permanent assignments.

From the very beginning, new staff members have an opportunity to contribute directly to significant projects . . . to be part of an organization where groups are small and emphasis is on the individual.

NOL offers you a graduate study program that is one of the largest and most productive programs in the country. Each year members of our professional staff receive M.S.'s or Ph.D.'s through this program. NOL has a significant advantage in its proximity to the University of Maryland. Many NOL staff members hold permanent part-time positions on the Maryland faculty, and graduate level courses are taught at NOL every semester. Maryland also offers many courses on its own campus—only minutes away—at times which are convenient to and keyed to the special requirements of NOL.

Chemical Engineers and Chemists—for research and development pertaining to high-energy propellants and explosives; high polymers; molecular and crystal structures; electrochemistry; high-temperature, high-pressure chemical equilibrium studies; and the thermodynamics of high-energy reactions.

Engineering Physicists and Physicists—theoretical and experimental research in a wide range of areas including signal processing, infrared radiation, acoustics, magnetic and semi-conductive materials, and detonation physics; plus weapon systems development and studies.

silé systems, instrumentation for weapons evaluation and aeroballistics research, and performance of new concept feasibility experiments.

### NOL ACADEMIC STUDY PROGRAMS

PROGRAM	COMPETITION	ADMITTANCE	SUPPORT
Part-time Graduate Study	Open to all qualified employees.	Approval by line management.	Refund of tuition and fees if course grade is "B" or better . . . approx. 1/2 time plus travel time for attendance.
Graduate Work-Study	Recent college graduates in certain engineering & scientific fields.	Selected by Personnel Officer . . . admission to local graduate school for M.S.	Full salary, tuition, books & fees . . . 2 days each week devoted to study and classes for 2 years maximum.
Intermediate Graduate Study	Recent college graduates in certain engineering & scientific fields.	Selected by Personnel Officer . . . admission to graduate school . . . an honors program.	Full tuition, books, fees, travel per diem & 1/2 GS-7 salary . . . (over \$3800) . . . 2 semesters full-time.
Advanced Graduate Study	Scientists & Engineers, grade GS-11 and above.	Selected by NOL Training Committee.	Full tuition, books, fees, travel, per diem, & full salary for 2 semesters.

### NOL NEEDS:

**Aerospace Engineers or Hydrodynamicists**—design studies of high-speed, high-performance re-entry systems, basic problems in theoretical and experimental aerothermodynamics, aeroballistics and hydroballistics; and aerodynamic design and development of hypervelocity wind tunnels and ballistic ranges.

**Mechanical Engineers**—conceptual design and development of warhead safing, arming and target-detecting devices for tactical and strategic missiles, underwater weapons, vehicle structures, and mechanical or electromechanical time and motion-sensing mechanisms.

**Electronic Engineers**—design, development and evaluation of underwater communications and detection systems, weapons guidance systems, influence fuzing, air-borne mis-

An NOL representative will be on campus . . . **MARCH 16, 1967**

Contact your Placement Office for interview.

Summer Professional Employment . . . for outstanding graduate students and graduating seniors.

U. S. NAVAL  
ORDNANCE  
LABORATORY  
WHITE OAK, MARYLAND



# Municipal Leaders Set Confab Here

Special Texas A&M facilities of use to municipal governments for coping with pressing urban problems will be described in the concluding meeting of Community Services Seminar for city managers here Friday and Saturday.

Computers, current urban planning and transportation problems will be discussed by A&M officials in three-hour sessions.

Robert L. Smith, Data Processing Center director, will discuss usefulness of computer and data processing equipment to municipal administrators and policymakers. He will cover means of applying computer technology to solution of municipal government problems, equipment usage and facilities offered by DPC and its staff.

A SESSION on current developments in urban and regional planning will be led by Joseph McGraw, director of urban and regional planning programs in A&M's Architecture School. Approaches to planning for human problems in the urban environment will be evaluated. A&M planning facilities and programs will be described.

Frank McFarland of A&M's Texas Transportation Institute will lead a seminar devoted to consideration of the developing crisis in urban transportation. Emphasis will be placed on the municipal government's role in fostering sound development of transportation facilities. McFarland will also outline current TTI programs.

Seminar participants and speakers will contribute to discussions, noted Economics Professor Claude Bitner, seminar project director.

"The purpose of the program is to foster a mutually beneficial exchange of ideas, information and experience between academicians interested in urban problems and the administrators and community leaders who must cope with the problems continuously in their jobs," Bitner said.

CITY administrators from Houston, Beaumont, Port Arthur, Texas City, LaMarque, Port Neches, Nederland, Baytown and Bellaire have participated in the series of seminar discussions. Allen Pulsipher of the Economics Department is assistant project director. Permanent panelists include W. E. Benton of the History and Government Department and Irving Dawson, chairman of Lamar State's Government Department.

The Community Services program will continue with the "War on Poverty" seminar series initiated at A&M last weekend. The next meeting will be in Houston March 10-11.

**Mink Art Supply**  
Picture Frames  
923 So. College Ave. - Bryan, Texas

REGISTRATION AND TEXT BOOKS BREAK YOU? Then see us, for a personal loan. Take advantage of our prompt, confidential loan service now.

## UNIVERSITY LOAN COMPANY

317 Patricia (North Gate)  
College Station, Texas  
Telephone: 846-8319

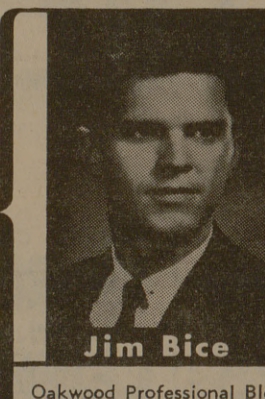
## WHATABURGER

1101 S. College — Across From Weingarten

"WORLD'S LARGEST PURE BEEF BURGER"

- 1/4 Lb. Pure Beef In Every Whataburger
- MADE WITH 100% PURE BEEF GROUND DAILY AT WHATABURGER

PHONE 823-1864 — Your Order Will Be Ready



DO YOU KNOW...

life insurance can help protect your most valuable asset . . . your earning power?

**American Amicable**  
LIFE INSURANCE COMPANY  
EXECUTIVE OFFICES, WACO, TEXAS

Jim Bice  
Oakwood Professional Bldg. Bryan, Texas VI 6-7963