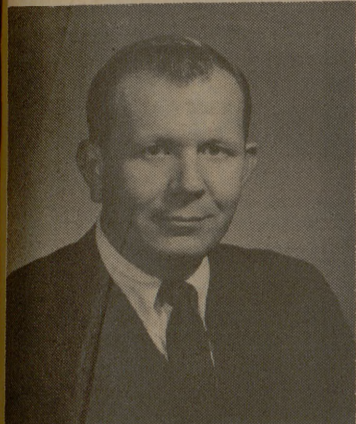


Dallas Grad Hopkins Named Executive VP Of Aggie Club



JOHN HOPKINS

John Hopkins, 31-year-old Texas A&M graduate, has been hired as executive vice-president of the Aggie Club, the fund-raising organization that supports A&M athletics.

Hopkins, a Dallas native who attained a marketing degree from A&M in 1957, will be primarily concerned with traveling and making personal contacts in his fund-raising job.

"Last year (1966), the Aggie Club had its best year by raising \$108,932," Hopkins said. "This year our goal is a minimum of \$175,000."

The only other paid employee of the Aggie Club is executive secretary-treasurer K. A. Manning of College Station who has worked in that capacity for several years.

The 1967 officers of the club are Jim Uptmore, San Antonio, president; Ford D. Albritton Jr., Bryan and Thomas A. O'Dwyer, Dallas, vice-presidents and Ed Durrett, Odessa; J. L. Huffines Jr., Greenville and Tom Lyles, Tyler, members of the executive committee.

Hopkins, son of Mr. and Mrs. A. F. Hopkins Sr., 7334 Minosa, Dallas, was born Aug. 5, 1935, in Dallas. He was graduated from Dallas Hillcrest in 1953. Following his graduation from A&M in 1957, he served as a lieutenant in the Air Force for two years and has been in the printing business in Dallas until he accepted his present position with the Aggie Club. His last job was in commercial sales with Exline-Lowdon Printing Co. of Dallas.

"One of my key problems," Hopkins said, "will be educating people as to what the Aggie Club really is. We are a separate club from the local A&M clubs and the Former Students Association."



CORRINN SHAY

Corrin is the first coed for our "girl Watcher's Corner." She is 21 and an advertising art major. As a junior at Texas Woman's University, she enjoys playing tennis and other outdoor sports. Her hometown is Houston.

'Campus Afloat' Interviews Set

B. W. Musgraves, representative of Chapman College, Orange, Calif., will be at A&M from 9:30 a.m. to 3 p.m. Friday to talk to students interested in the Chapman "Campus Afloat" program. "We're particularly interested in seeing the 10 students who wrote in response to our announcement last October," Musgraves explained, "but anyone else who wants to get information on the program is also welcome to see me, in Room 101 of the YMCA Building."

The college started the project in September 1965 under the name "Seven Seas Division." Its purposes are to select outstanding high school and college students for "intense academic concentration, supplemented by exposure to the world's cultures," and to "guide this education by a semester of coursework comparable to that offered on any land-based campus but enriched by its relationship to in-port programs."

DO YOU KNOW...

that you can have your home mortgage marked "Paid in Full" if you die?

AMERICAN AMICABLE
LIFE INSURANCE COMPANY

ESTABLISHED 1862

Jim Bice
EXECUTIVE OFFICES, WACO, TEXAS

Oakwood Professional Bldg. Bryan, Texas VI 6-7963

— Job Calls —

- MONDAY**
- California State Personnel Board — CE (BS, MS)
 - Factory Mutual Engineering Division — Arch Constr, ChE, CE, EE, I Eng, ME, PetE (BS)
 - Goodyear Tire & Rubber Company, Technical Sales — ChE, Chem, I Dist, I Eng, Math, ME (BS)
 - Hughes Aircraft Company — EE (B, M, D)
 - Lockheed Missiles & Space Company — Aero E, CE, EE, I Eng, ME, Math, Phys (B, M, D)
 - Monday and Tuesday
 - Goodyear Tire & Rubber Company — ChE, Chem, CE, EE, I Eng, ME
 - Pan American Petroleum Corporation — Acctg (B), ChE, Pet E, ME (BS, MS), Geol E, Geol, Geophys, Math, Phys (B, M, D), also summer employment
 - J. C. Penney Company, Inc. — Mgmt, Mktg (BBA)
 - Texaco Inc. — ChE, CE, EE, (B, M, D), Geol E (B, M), Chem (M, D), Phys (B, M, D), Math (B, M, D), Phys Ed (B), Comp Sci (B, M, D), Stat (B, M), Liberal Arts (B), Mktg, Acctg, DPC (B, M)
- TUESDAY**
- Carnation Company — Acctg, CE, EE, I Eng, Mgmt, Mktg, ME (B)
 - National Cash Register Company — ChE, Chem, Phys, EE, ME (B, M, D), I Eng, Math (B, M), Comp Sci (M)
- TUESDAY AND WEDNESDAY**
- McDonnell — Aero E, CE, EE, I Eng, ME, Math (B, M, D)
 - Texas Power & Light Company — CE, EE, ME, Acctg, Fin, Mgmt, Mktg, Ag Eco, Ag Ed, Agron (BS)
 - Diamond Alkali Company — ChE, Chem, ME, Mktg (B, M) — also summer employment
- WEDNESDAY**
- Olin Mathieson Chemical Corporation — ChE, I Eng, MS (BS, MS)
 - Skelly Oil Company — ChE, Geol E, ME, Pet E (BS), Geol (BS, MS)
 - The Upjohn Company — AgEd, An Sci, Biol, Chem, Mgmt, Mktg (Pre-Vet)

Poverty War Seminar Set

The "War on Poverty" will be studied from economic, philosophic, historical and welfare points of view in the second Community Service Seminar starting here Friday and Saturday.

Sponsored by A&M's Liberal Arts College, the reciprocal education program will bring together in five sessions academicians, church leaders, employment counselors, social organization and youth workers.

They will exchange information in seminar style on traditional public welfare approaches to the problems of the poor and their place in the war on poverty.

NEW perspectives on urban problems will be sought by bringing together academicians and people working actively in the problem area," said Allen G. Pultspher, co-director along with Claude Bitner of the A&M Economics Department.

THE FIRST session will include as speakers John Orr, head of A&M's Philosophy Department; Calvin Jackson, work experience program coordinator of the State Department of Public Welfare; A&M government instructor Claude Davis and Jack Otis, director of the University of Texas' School of Social Work.

Sessions in March, May and June will be held at Houston, Austin and College Station.

Frank Davis, chairman of the Commission on Christian Social Concern, A&M Methodist Church, will participate.

Bulletin Board

- TODAY**
- A.I.Ch.E. will meet at 7:15 p.m. in front of the MSC for their picture for the Aggieland to be taken. Immediately following, C. H. Curtis of the Pace Company will present "Chemical Marketing Research" in room 105 of the Geology Building.
 - Ablene Hometown Club will meet in room 208 of the Academic Building at 7:30 p.m.
 - Amarillo Area Hometown Club will meet in the Art Room on the third floor of the MSC at 7:30 p.m.
 - Beaumont Hometown Club will meet at 7:30 p.m. in room 2-C of the MSC.
 - Bell County Hometown Club will meet in room 205 of the Academic Building at 7:30 p.m. The candidate for the Cotton Pageant will be selected.
 - Waco Hometown Club will meet in the Fashion Room of the MSC at 7:15 p.m. Please bring pictures for the selection of the sweetheart.
- to go to the Harkness Ballet at the Bryan Civic Auditorium.
- Mid-County Hometown Club will meet in the lobby of the MSC at 8 p.m. for the group picture for the Aggieland to be taken.
 - Orange County Hometown Club will meet at 7 p.m. in the MSC. Picture for the Aggieland will be made.
 - Panhandle Hometown Club will meet in the Art Room of the MSC at 7:30 p.m.
 - Pasadena Area Hometown Club will meet in the lobby of the MSC at 7:30 p.m. for their Aggieland picture to be taken.
 - Rio Grande Valley Hometown Club will meet in room 224 of the Academic Building at 7:30 p.m. The candidate for the Cotton Pageant will be selected.

REGISTRATION AND TEXT BOOKS BREAK YOU?
Then see us, for a personal loan. Take advantage of our prompt, confidential loan service now.

UNIVERSITY LOAN COMPANY
317 Patricia (North Gate)
College Station, Texas
Telephone: 846-8319

LOW PRICES RUN RIOT!

SPECIALS FOR: THURS., FRI., & SAT. FEBRUARY 16, 17, & 18, 1967.

ALL QUANTITY RIGHTS RESERVED. Call the cops! We've murdered prices—mowed 'em down on a long list of everybody's favorite foods! Every department features SUPER SPECIALS — amazing savings over and above our regular every day low prices. Here are some of the big bargains. Many more await you at our market. Pack your pantry! Fill your freezer! Stack up savings at BROOKSHIRE'S riot of low prices.

<p>Libby's Catsup 5 14-Oz. Btl. \$1</p>	<p>Folger's — Mountain Grown Coffee With Purchase LB. of \$5.00 or More 29c CAN</p> <p>Libby's — Sliced or Halves PEACHES 4 No. 2 1/2 Cans \$1.00</p> <p>Northern Facial TISSUE Box of 100's 10c</p>
---	--

<p>Folger's — Red Delicious APPLES Lb. 17c</p> <p>California — Calavo AVOCADOS Each 5c</p>	<p>Taste-O-Sea — Perch FILLETS 1-Lb. Pkg. 39c</p> <p>Western Star — French Fries POTATOES 2 Poly Bag 29c</p>	<p>Libby's — Cut Green BEANS 5 Cans \$1</p> <p>Libby's — Vienna SAUSAGE 5 4-oz. cans \$1</p> <p>Kraft's — Soft Miracle MARGARINE 3 1-Lb. Pkgs. \$1.00</p> <p>Pillsbury — Layer CAKE MIX 3 boxes \$1</p>
--	--	---

<p>Farm Fresh PRODUCE</p> <p>Washington State — Red Delicious APPLES Lb. 17c</p> <p>California — Calavo AVOCADOS Each 5c</p>	<p>FROZEN FOODS</p> <p>Taste-O-Sea — Perch FILLETS 1-Lb. Pkg. 39c</p> <p>Western Star — French Fries POTATOES 2 Poly Bag 29c</p>
---	---

SUGAR IMPERIAL — PURE CANE
5-Lb. Bag With Purchase of \$5.00 or More **29c**

LIBBY'S EARLY GARDEN **Quality MEATS**

<p>PEAS 5 No. 303 Cans \$1.00</p>	<p>Hickory SMOKED PICNIC Lb. 29c</p> <p>Roegeleins SLICED BACON Lb. 65c</p> <p>Roegeleins PORK SAUSAGE 1-Lb. Roll 39c</p>
---	---

THIS COUPON WORTH 50
FREE Top Value Stamps
With Purchase of 18 x 25 ft. Roll
ALCOA FOIL WRAP
Coupon Expires Feb. 18, 1967

THIS COUPON WORTH 50
FREE Top Value Stamps
With Purchase of \$5.00 or More
(Excluding Cigarettes) One Per Family
Coupon Expires Feb. 18, 1967

Brookshire Bros.

• THE BEST FOR LESS •

SPECIALS For: Thurs. Fri. Sat. Feb. 16, 17, & 18, 1967.

WOULDN'T YOU RATHER BE WITH NO. 1?

If you want a career that really gives you room to grow, we have a suggestion. Start with the No. 1 family of companies:

Humble Oil & Refining Company—Provides more petroleum energy to this nation than any other domestic oil company—literally No. 1—America's Leading Energy Company.

Enjay Chemical Company—One of the 10 largest chemical companies in the United States. As part of an industry marked by rapid growth, Enjay offers unusually strong advancement opportunities.

Esso Production Research Company—Analysis and design work for drilling and production of natural gas and liquids, reservoir engineering using computers.

Esso Research and Engineering Company—Basic and exploratory research and development of products and processes, engineering research and process design, mathematical research.

Start with any of the No. 1 family of companies and we'll help you grow—with frequent evaluations... development programs... encouragement to gain professional recognition—because that's the way we grew to be No. 1.

We need people in practically all disciplines, because our work includes oil and gas exploration and production; research; and manufacturing, transportation and marketing of petroleum and petrochemical products—as well as the management of all these operations.

There is almost no limit to the opportunities we offer—at every degree level. So go ahead... have a look at No. 1. See us on campus.

THESE ARE PLANS FOR PROGRESS COMPANIES AND EQUAL OPPORTUNITY EMPLOYERS.