

# Wildlife Science Department Sets Fish Farming Confab

The first Commercial Fish Farming Conference in Texas is set Feb. 1-2 at Texas A&M's Memorial Student Center.

Conference Manager Wallace Klussman, extension wildlife specialist for the Wildlife Science Department, said the conference will furnish current research findings on commercial production of freshwater fish, particularly catfish.

KLUSSMAN compares farming fish with raising calves in a feedlot.

"You take them 'off the range' and put them on the feed bag," he quipped.

Speakers for the Wildlife Science and Agricultural Extension Service sponsored conference include some of the nation's top fisheries scientists. Two recent additions are Dr. Alvin Shin, radiation ecologist for the Oak Ridge National Laboratory, and Dr. Ray Grizzell, Arkansas Soil Conservation Service biologist. Shinn will discuss the potential of fresh water fish as a protein sup-

ply following a nuclear disaster, and Grizzell will cover pond construction, water quality and quantity.

OTHER SPEAKERS include pathologist Dr. Fred Meyer, nutritionist Dr. Walt Hastings and production specialist Mayo Martin of the U. S. Fish Farming Experimental Station, Stuttgart, Ark.; John R. Donahue, fish marketing specialist, Bureau of Commercial Fisheries, St. Louis, Mo.; and James Hall, fish harvesting researcher, Kelso, Ark.

# A&M To Sponsor Hemisphere Study

Tropical rain forests, Inca ruins of Machu Picchu, the world's mightiest water course, fruit schooners of the "Banana Republic" of Guatemala, Teotihuacan and the food-rich pampa of Argentina will be visited by 35 Texas teachers next summer in an intercultural education project through Texas A&M.

Teachers from throughout the state will spend seven weeks at A&M and in Mexico, Central and South America for Programa de Educacion Interamericana, announced Director Dr. Earl Jones.

Argentina, Brazil, Mexico, Guatemala and Peru will be visited

three weeks by teacher teams, to study educational systems, the people and their cultures.

"BIG CITY and rural schools, metropolitan and mountain areas and points of interest will be visited," explained Mrs. Frances Dean, associate director. The intercultural education visits will be reviewed upon return to College Station, to compile instructional materials for use in all Texas public schools grades and subjects.

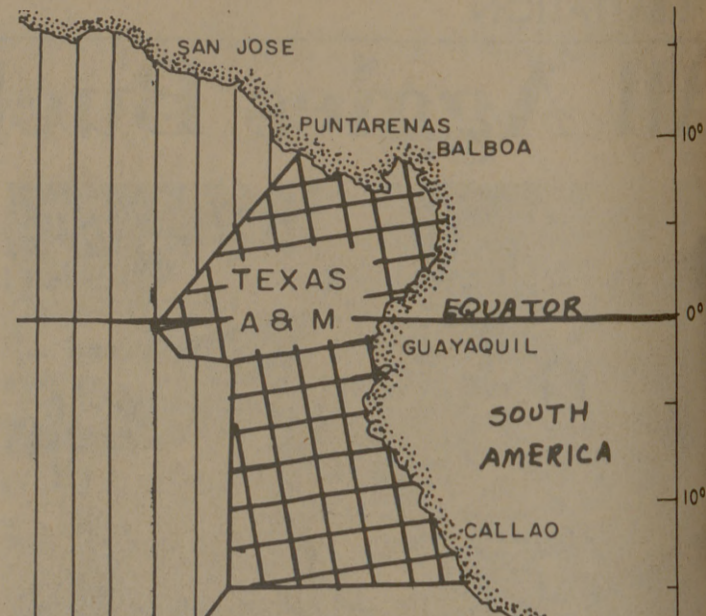
School teachers representing every teaching field and geographical location will report to the A&M program center June 11 for two weeks intensive orientation. Teams with graduate student "educational attaches" will travel June 25-July 17. De-briefing at A&M is scheduled July 18-31.

"Teachers are selected for teaching field competence, cultural empathy and curriculum construction and writing talent," Dr. Jones noted. "Language requirements are flexible."

PRE-ORIENTATION instructional materials, books and language tapes have been furnished selected teachers. Dr. Jack Dabbs, Modern Languages Department head, provides language study tapes in Portuguese and Spanish.

"We hope teachers come back with so much interest and enthusiasm that they will stimulate fellow teachers and students in intercultural relations and study," the associate director said.

Guidelines for team study will be provided by search lists. Movies and still pictures will be made.



ALAMINOS RESEARCH AREA

The Alaminos, A&M's oceanographic research vessel, will study the area of the Pacific shown on the map, starting next month. The 180-foot ship is scheduled to cast off Galveston Friday.

# Alaminos To Tour Eastern Pacific

The Alaminos, Texas A&M's oceanographic research ship, casts off Galveston Friday for its most extensive cruise and the vessel's first venture into the Pacific Ocean.

The 180-foot floating laboratory with up to 14 in its scientific party will participate in EASTROPAC cooperative studies in the eastern tropical Pacific, announced Dr. Richard A. Geyer, Oceanography Department head.

The Alaminos will cover 12,000 miles in the EASTROPAC

cruise, up to 650 miles off the coasts of Central and South America. The 80-day research voyage will clear the Panama Canal Jan. 29 and spend 64 days in Pacific waters, making port at Callao, Peru; Puntarenas, Costa Rica, and Academy Bay of Galapagos Island.

EASTROPAC studies are aimed at gaining a better understanding of the eastern tropical Pacific's upper layers of circulation, its relation to atmospheric circulation, primary production, plankton and region food fish. Concurrent cruises by other vessels in February and March will cover areas further off coast.

Other U. S. participants are the Bureau of Commercial Fisheries, Scripps Institute and the Coast Guard. Shorter observations will be conducted by ships of the Environmental Sciences Service Administration, the University of Miami, Stanford Marine Biological Laboratory and the Navy Oceanographic Office.

Ecuador, Peru and Chile will operate ships off their coasts and the Inter-American Tropical Tuna Commission, of which the U. S. is member, will cooperate. PROFESSORS John D. Cochran, A&M coordinator of EASTROPAC operations, and Dr. Dale F. Leipper will direct physical oceanographic work; Dr. Sayed Z. El-Sayed, biological, and Dr. Guy A. Franceschini, meteorological. A Peruvian physical oceanographer, from the Institute del Mar, and a U. S. Fish and Wildlife Service biologist will be aboard the Alaminos in the Pacific.

Dr. Edward Ibert and Miss Leila Jeffries will conduct laboratory investigations on trace elements and organic matter from samples collected in the Caribbean and Pacific.

Physical oceanographic work for Leipper and chemical work for Ibert will be accomplished while the ship is enroute to Panama.

DEAN LETZRING will direct technical work with William Burns, Augusto Bresba, Everardus and Anton Vos, John McGraw and Jacques Pirson serving as marine technicians. Don Koelsch will be in charge of electronic work, assisted by Carroll Brunson and Alfred Gutierrez.

Carrying out studies in various parts of the cruise will be graduate students Jimmy Crain of Brownsville (meteorological), Robert Molinari of New York and Ronald Schlitz of Boston, Mass., (physical).

## CORPS SENIORS STAFF JUNIORS FIRST SGTS.

Get your yearbook pictures taken for the Aggie-land '67 before 28th of January at the University Studio, North Gate.

## CIVILIAN SENIORS and GRADUATE STUDENTS

Will have their portrait made for the Aggie-land '67 THRU JANUARY 28 Portraits will be made at the University Studio (coast and tie).



# SHAFFER'S

won't play second fiddle to anyone when it comes to buying used books.

# Safeway has the LOW PRICES



**SAVE 11¢**

## Hi-C Drink

★Grape ★Orange ★Pineapple-Grapefruit ★Apple ★Fruit Punch—46-oz. Can

**3 for 89¢**

**SAVE 32¢**

## Scot Tissue

For the bathroom. ★White or ★Assorted colors.

**10¢**

Frozen Food Buys...

**Ice Cream 49¢**  
Snow Star, Ass'd. flavors. (Save 20¢)—1/2-Gal. Ctn.

**Fruit Pies 3 \$1**  
Bel-air, Assorted variety. (Save 35¢)—1 1/2-Lb. Pkg. (Cream Topping 1/2-oz. Can 49¢)

**Dinners Reg. Pkg. 39¢**  
Banquet—Macaroni & Cheese—Spaghetti & Meat Balls—Franks & Beans—Corned Beef Hash

**Fish Sticks 8-oz. Pkg. 39¢**  
Captain's Choice, Precooked

**El Chico Dinner 49¢**  
Frozen. ★Mexican ★Enchilada. Regular Package

Redeem this coupon for 100 FREE GOLD BOND STAMPS

With Purchase of \$10.00 or more (Excluding Cigarettes)

One per family • Coupon Expires Jan. 21

**GET A LOAD OF THESE VALUES AT SAFEWAY**

**Tomatoes** (Save 7¢). Gardenside—16-oz. Can **6 for 89¢**

**Chunk Tuna** Sea Trader, Light meat. (Save 9¢)—6 1/2-oz. Can **25¢**

**Biscuits** Mrs. Wright's ★Sweetmilk or ★Buttermilk. Why Pay More?—8-oz. Can **5¢**

**Tomato Sauce** Hunt's. (Save 32¢)—8-oz. Can **9 for 99¢**

**Corned Beef** Libby, Good with eggs. (Save 10¢)—12-oz. Can **49¢**

**Instant Coffee** Maryland Club. (Save 10¢)—10-oz. Jar **\$1.19**

**SAVE 14¢**

## Detergent

Ajax, Washday aid. (10¢ off label). 49-oz. Box

**49¢**

With \$2.50 Purchase

**SAVE 4¢**

## Shortening

With \$5.00 Purchase

Velkay. For all your baking.

**3 Lb. Can 39¢**

From Safeway's Dairy Case!

**Skim Milk 39¢**  
Lucerne, Rich in flavor—1/2-Gal. Carton

**Large 'AA' Eggs 56¢**  
Cream O' the Crop. Dozen

**Large 'A' Eggs 52¢**  
Breakfast Gems. Dozen

**Navel Oranges 2 lbs. 29¢**

Most Popular for Eating Out of Hand. Juicy, Fresh Flavor. Extra Large, Fancy.

**Bananas 2 lbs. 29¢**  
Try Banana Muffins.

**Butter & Egg Bread 19¢**  
Skylark. (Reg. 23¢). 1-Lb. Loaf

**Fruit Snails 33¢**  
Mrs. Wright's. (2¢ off label). 10-oz. Pkg.

**Raisin Bread 27¢**  
Skylark. Not loaf. 1-Lb. Loaf

**Turnips 2 lbs. 29¢**  
Clip-top.

**Radishes 10¢**  
Chill and Serve—6-oz. Pkg.

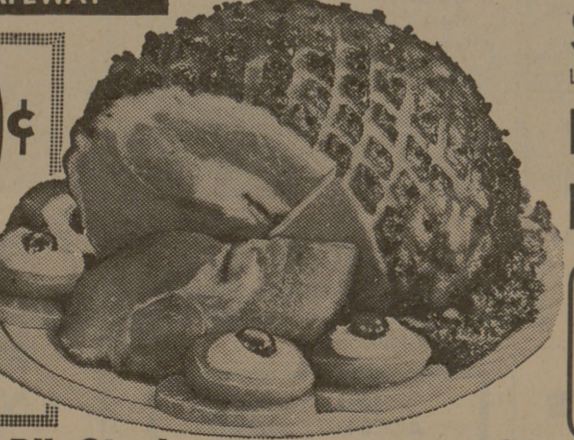
**Tangerines 19¢**  
and Tangelos—Lb.

**Dates 35¢**  
Non-Pitted—12-oz. Pkg. (Pitted—10-oz. Pkg. 35¢)

**Smoked Ham 39¢**  
Tender and Juicy. Shank Portion Lb.

**Half or Whole Lb. 59¢**

**Center Portion 89¢**  
(Sliced—Lb. 99¢)



**Boneless Roast 69¢**  
Shoulder, U.S.D.A. Choice Grade Heavy Beef—Lb.

**Fancy Fryers 29¢**  
Whole, U.S.D.A. Inspected, Grade "A"—Lb. (Cut-Up U.S.D.A. Inspected—Lb. 35¢)

**Rib Steaks 79¢**  
Baby Beef—Lb.

**Rib Steaks 89¢**  
U.S.D.A. Choice Grade Heavy Beef—Lb.

**Sliced Bacon 69¢**  
Reth Blackhawk or Swift Premium—1-Lb. Pkg.

**Sliced Bologna 59¢**  
Safeway, Jumbo—1-Lb. Pkg.

**Chopped Ham 59¢**  
Safeway—8-oz. Pkg.

**Pork Sausage 2 lbs. 79¢**  
Wingate, Regular or Hot

**Ground Beef 2 lbs. 98¢**  
Safeway, Chub Pak.

Prices Effective Thurs., Fri. and Sat., January 19, 20 and 21, 1967. We Reserve the Right to Limit Quantities. No Sales to Dealers.

# SAFEWAY

© Copyright 1960, Safeway Stores Incorporated.

# You'll Find The Most—At Lou's Trading Post