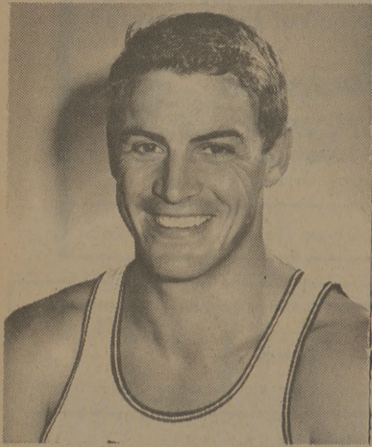
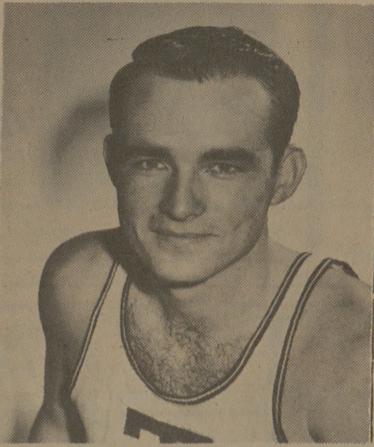


# Metcalf Lists Seven 'Starters' For Game Tonight



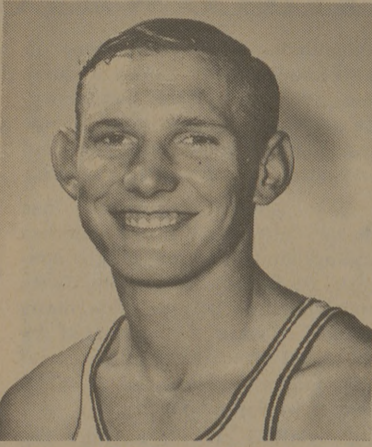
DICK RECTOR



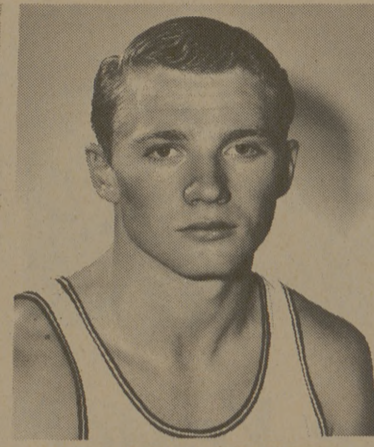
TERRY TRIPPET



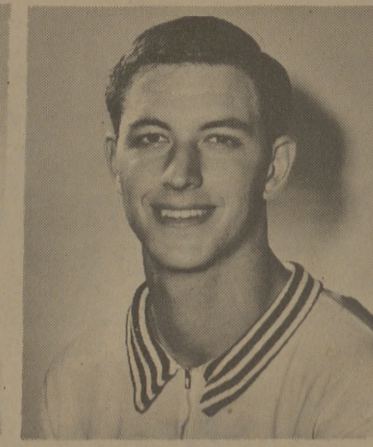
JOHN UNDERWOOD



JERRY PAYNE



BILLY BOB BARNETT



RONNIE PERET



SONNY BENEFIELD

## Aggies Ready For Opener

By GARY SHERER

The 8 p.m. varsity encounter will follow the Fish basketball team's first game against Lon Morris Junior College. The freshman game starts at 5:45.

Fish Coach Jim Culpepper announced a starting lineup which includes Mac Hooten, 5'11" from Alba, guard; Bill Brown, 6'1" from Galveston, guard; Oliver Biggers, 6'2" from New Braunfels, forward; Mike Heitman, 6'4" from Houston Sam Houston, forward, and Mike Hazel, 6'6" from San Antonio MacArthur, center.

FOUND A STEADY SPORT IOWA CITY (AP)—Otto Vogel, who came off the University of Illinois campus in 1923 to win a job with the Chicago Cubs and then had to retire in 1925 because of arm trouble, is retiring again. Vogel, 68, is retiring this year after coaching baseball at Iowa for 38 years.

"We've got seven starters. Unfortunately only five of them can play at one time," said Aggie Head Basketball Coach Shelby Metcalf in discussing the varsity's home opener tonight against Louisiana Tech.

Battling for the starting berths are Dick Rector, senior captain; three juniors, Terry Trippet, John Underwood and Jerry Payne; and three sophomores, Ronnie Peret, Billy Bob Barnett and Sonny Benefield.

"If I had to name a starting five, it would be Peret at center, Trippet and Barnett at the post positions and Rector and Underwood, guards," said Metcalf, "but this can change by game time."

"They (La. Tech) have a tall team and we hope to be ready for them," Metcalf added. Tech will have a seven-footer and a near seven-footer in the starting lineup to give them a big rebounding edge, at least on paper.

### AN OPEN LETTER

Hello Aggies,

For several weeks we have been running our advertisement in the Battalion telling you about Aggieland Recreation Center located behind Betty's Fashions in the Redmond Terrace Center, College Station, Texas.

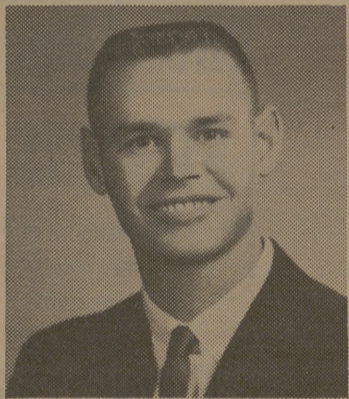
We've told you that we have two five by ten billiard tables, two five by ten snooker tables, sixteen four by eight billiard tables, seven pin ball machines and other games. That we are open 7 days each week from 8 a. m. till midnight. That no alcoholic beverages are sold or allowed. That we sell billiard supplies, jointed cue sticks, etc.

Hundreds of Aggies have visited our Recreation Center, and we believe most of them were impressed. If you have never visited the Aggieland Recreation Center, we hope you will very soon. We believe you will like what you see.

AGGIELAND RECREATION CENTER  
Redmond Terrace Center  
College Station, Texas

P. S. By the way, the girls play here!

**YOUR FRIEND FOR LIFE**



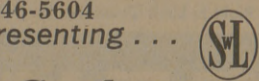
He's helping young men plan today for a better life tomorrow.

He's your Southwestern Life College Representative — and he has specially-designed life insurance policies to fit your own individual needs today, tomorrow and in the years ahead. They're new-idea plans created by one of the nation's leading life insurance companies especially for, and only for, men college seniors and graduate students pursuing professional degrees.

He's an easy person to talk with, and what he has to tell you about these policies can make a lot of difference in your future. Talk with him when he calls — give him an opportunity to be "Your Friend for Life." There's never any obligation.

**DELBERT L. HOLCOMB**

707 University Drive  
846-5604  
representing . . .



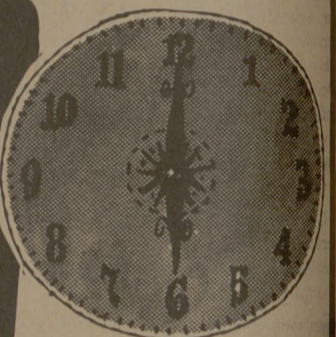
Southwestern Life

SPECIALS FOR: THURS. FRI. SAT. DEC. 1, 2 & 3. 1966



More Christmas Time - Less Kitchen Time...

**QUICK-FIX FOODS**



**DOUBLE STAMPS TUESDAY**

WITH \$2.50 OR MORE PURCHASE

Folger's — Mountain Grown

**COFFEE**

With \$2.50 or More Purchase Lb. Can

**49¢**



Breast - O - Chicken

**TUNA SOUP**

Heinz Tomato

6 1/2-Oz. Can **29¢**  
Can **10¢**

LIBBY'S PEARS

4 No. 303 Cans **\$1.00**

LIBBY'S CATSUP

4 20-Oz. Btls. **\$1.00**

LIBBY'S BEANS

5 No. 303 Cans **\$1.00**

10¢ **COUPON** 2 rolls for **19¢** with this coupon at **BROOKSHIRE BROS.**

10¢ **white cloud** 10¢

LIMIT ONE COUPON PER FAMILY COUPON EXPIRES DEC. 3, 1966

**SUGAR**

Imperial Pure Cane With \$2.50 Purchase or More

5 LB. BAG **39¢**

DETERGENT **Genie** 49¢

### Quality MEATS

U.S. GOOD BEEF ROUNDS or

**SIRLOINS**

LB. **79¢**

U. S. Good Steak

**T-Bones** 89¢ lb

U.S.D.A. GRADE A

**FRYERS**

Whole 29¢  
Cut Up 33¢

THIS COUPON WORTH 50

**FREE Top Value Stamps**

With Purchase of Any 3 Pkgs. 6-OZ. RATH'S LUNCH MEAT Coupon Expires Dec. 3, 1966.

**STEAK** Tenderized Lb. **89¢**

**ROAST** Rump or Pike's Peak Lb. **69¢**

**SALT JOWLS** Lb. **19¢**

THIS COUPON WORTH 50

**FREE Top Value Stamps**

With Purchase of 56-Oz. Can JOHNSON'S KLEAR Coupon Expires Dec. 3, 1966.

### Farm Fresh PRODUCE

U. S. No. 1, Baking Russet

**Potatoes** 8 LB. BAG **39¢**

Calavo **Avocados** Large Size 3 FOR **19¢**

California, Iceberg **LETTUCE** Head **15¢**

THIS COUPON WORTH 50

**FREE Top Value Stamps**

With Purchase of \$2.00 or More IN FRUIT CAKE INGREDIENTS Coupon Expires Dec. 3, 1966.

THIS COUPON WORTH 50

**FREE Top Value Stamps**

With Purchase of \$5.00 or More (Excluding Cigarettes) One Per Family Coupon Expires Dec. 3, 1966.

### FROZEN FOODS

Banquet—Apple, Cherry, Peach — FRUIT

**PIES** 3 8-In. Pies **\$1**

Vahlsing **CORN ON COB** Cello Bag of 4's **39¢**

Tennessee **GREEN PEAS** 4 10-Oz. Pkgs. **59¢**

Tennessee, Whole **NEW POTATOES** 1/2-Lb. Poly Bag **31¢**

Taste 'O Sea **PEARL FILLETS** Lb. Pkg. **49¢**

Libby's **FRUIT COCKTAIL** 5 303 Cans **\$1**

Sliced or Halves **LIBBY'S PEACHES** 5 303 Cans **\$1**

Libby's **SPINACH** 6 303 Cans **\$1**

Libby's—SPAGHETTI & **MEAT BALLS** 4 15 1/2-Oz. Cans **\$1**

Libby's—Sliced, Crushed or Minted **PINEAPPLE** 4 No. 1 1/2 Cans **\$1**

Libby's—Deep Brown **BEANS** With Tomato Sauce 8 14-Oz. Cans **\$1**

Libby's—Stewed **TOMATOES** 4 No. 303 Cans **\$1**

**Brookshire Bros.**  
• THE BEST FOR LESS •