

THE ALAMINOS AT DOCK

Alaminos' Namesake Vessel Aids A&M Oceanographers

By MIKE PLAKE
Anton de Alaminos helped Columbus discover America. He also helped Hernando Cortez discover and explore the Gulf of Mexico.

Now his namesake is keeping the tradition alive.
The namesake, an explorer-research vessel owned and operated by the Texas A&M Department of Oceanography, has journeyed from one end of the Gulf of Mexico to the other, and has made trips into the Atlantic and Pacific Oceans. It will take part in the EASTROPAC survey, which will explore the currents off the Atlantic Coast of South America next February.

The Los Alaminos provides living quarters for a captain, a 21-man crew, 13 scientists and one technician. It was converted from an F-S Army transport in 1963, when Texas A&M procured the ship in San Diego, California. After trips to the New Orleans and Orange shipyards for reworking, the Alaminos made its maiden shakedown voyage as a research vessel in November, 1963.

With a 6,000-mile range and 12-knot cruising speed, the 180-foot long ship has had no major mechanical difficulties in the Gulf or in the open ocean. It is the fourth major research vessel owned by A&M.

When it was first launched, the Alaminos' total replacement value was over \$3,000,000. Minor improvements have been added regularly to the facilities and equipment.

The ship now features 2,900 square feet of scientific space below and 3,000 square feet of usable deck space.

When it was fitted, three changes and additions to the ship took place:

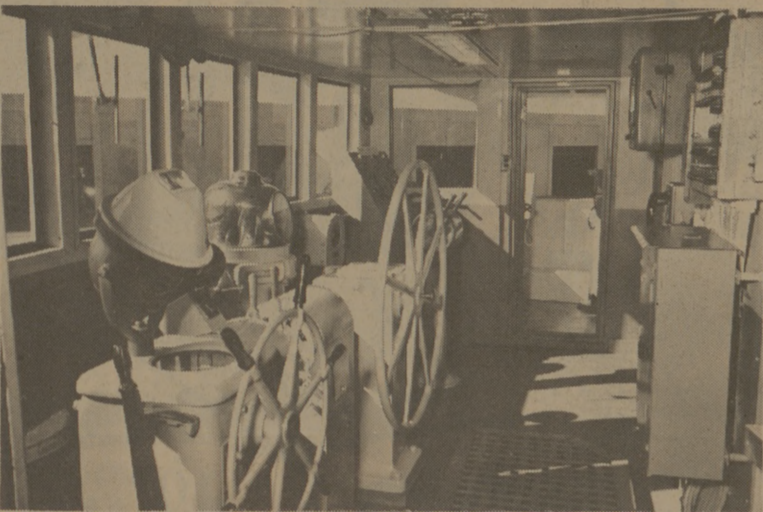
The superstructure was moved forward thirty feet to make room

for scientific facilities.

Two pieces of special equipment were added: The first, a special electrically-operated bow unit, enabled the vessel to maneuver with the motors shut off, making possible undisturbed observation.

Anti-rolling tanks were built into the ship to aid its stability in heavy seas.

When it was launched two years ago, the Alaminos was the only university-operated oceanographic research vessel in the world.



ALAMINOS WHEEL HOUSE

Teachers Learning 'Hardware' Uses

Technological advancement in the classroom has raised a question at Texas A&M University. An answer is offered in an education course, administration and utilization of educational media.

How should educators use closed circuit TV, dial-access audio-visual systems, single concept films, blackboard by wire and other instructional aids, many of which were demonstrated by the A&M Creative Application of Technology to Education (CATE) Center in September?

Education and Psychology Department Head Dr. Paul Hensarling believes the teaching profession must supply the answer.

"We have lots of hardware which teachers need to learn to use effectively," he said. "Education 605 is a direct activity of the department to teach creative application of technology to education." The course is instructed by Donald K. Stewart, CATE Center director.

A&M is proposing a Teaching-Learning Center which will utilize technology to improve teaching. The CATE project is concerned with effective use of technology in public school situations. It is supported by a \$112,315 planning grant.

Educators must employ new aids to improve education, Stewart counsels his 12-member class.

Solution of student learning problems hinges on communication, he teaches. Teacher and student must both send and receive.

"Solving a learning problem doesn't always require complex equipment," Stewart noted.

"TESTS ARE a form of communication. Few teachers have had a course in testing. Some

do a good testing job, but don't measure student progress," he explained.

Stewart said advanced apparatus can be used in team teaching to assist in teaching subjects of minor importance, releasing the instructor to work with individual students.

Among course members are professors and teachers from A&M, Bryan, College Station, Snook, Brenham and Killeen.

Jimmy Horn, Snook principal, teacher and coach of consecutive state basketball champions, says he has applied course techniques successfully to a general science class.

BRYAN PUBLIC Schools music and choir instructor Jim Austin believes concepts aired in the Saturday classes will lessen teaching difficulties.

"We've discussed a practical approach to teacher shortage," Austin commented. "Through closed circuit TV, one teacher can instruct any number of students. Two-way communication allows students to ask questions."

DO YOU KNOW...

that the new Economaster Plan will return all annual premiums paid at the end of twenty years?

American Amicable
LIFE INSURANCE COMPANY
EXECUTIVE OFFICES, WACO, TEXAS

Jim Bice
Oakwood Professional Bldg. Bryan, Texas VI 6-7963

PIZZA HUT

2610 Texas Ave.
Tel. 822-1441

OPEN
11:30 a. m.
to
Midnight
Friday & Saturday
till 1:00 a. m.

BEVERLEY BRALEY... Tours-Travel

Offers all students and members of the faculty and staff the following travel service:

1. Special Student Rate Airline Tickets
2. Airline Reservations and ticketing
3. Car rental and purchase, domestic and international
4. Steamship and group travel
5. Charter Airline and Bus Quotations Available

A 30 day Open Charge Account to all members of the Faculty and Staff

"NEED AIRLINE TICKETS? CALL US AND CHARGE IT"

MEMORIAL STUDENT CENTER "BONDED ASTA AGENT" 846-7744

DINNERS
Morton, Frozen. So quick and delicious. Assorted varieties.
11-oz. Pkgs. **3 for \$1**

Mix or Match!
★ Post Corn Flakes
★ Cheerios
★ Kellogg Raisin Bran
★ Wheaties
Reg. Box **3 for \$1**

"PLAY 21"
Last Week to Play!
Saturday, December 3, is the last day "Play 21" slips will be issued. Saturday, December 17, is the last day winning "Play 21" slips may be redeemed. Save all of your non-winning "Play 21" slips and deposit them at your favorite Safeway Store. A drawing will be held at the end of promotion for the big valuable prize of 2,000,000 Gold Bond Stamps.
Rules... See full details on the "Play 21" rules and information on the drawing at your Safeway Stores.

BISCUITS
Mrs. Wright's. ★ Sweetmilk or ★ Buttermilk. So flaky.
8-oz. Can **14 for \$1**
Delicatessen Savings!
10¢ off Regular Price any package Safeway Half Moon.

Round Steak
Full cut. U.S.D.A. Choice Grade Heavy Beef. **Lb. 75¢**

Rump Roast U.S.D.A. Choice Grade Heavy Beef—Lb. **73¢**

All This for 39¢ a Pound!
★ Pork Spareribs 3 to 5-Lb. Avg. Whole.
★ Smoked Picnics 6 to 8-Lb. Avg. Fresh, Whole.
★ Pork Picnics 6 to 8-Lb. Avg. U.S.D.A. Inspected.
★ Roasting Chickens U.S.D.A. Inspected Grade "A," 4 to 6-Lb. Average. **Lb. 39¢**

Longhorn Cheese
Discount Non Food Prices!
5-Roll Gift Wrap For Christmas, Assorted colors and designs. 33-inches wide—Pkg. **57¢**

Sliced Bacon Capitol—1-Lb. Pkg. **59¢**

FRYERS U.S.D.A. Inspected... Grade "A," Whole, Lb. (Cut-up... Lb. 35¢) **29¢**
Leg Quarters or Halves, U.S.D.A. Inspected, Grade "A," Lb. **35¢** Breast Quarters U.S.D.A. Inspected... Grade "A," Lb. **43¢**

la-de-da snooty affairs
our specialty!
Ladies love meeting at Ramada Inn! Fancy banquets, Club get-togethers and Luncheons are just more fun! Hold your next femme fest at Ramada... whether lavishly formal or quaintly unrestrained. At Ramada it's no secret: we love ladies!
Try our fast, friendly breakfast and luncheon service.
"Luxury for Less"
RAMADA INN
Bryan - College Station 846-8811

Pure Sugar Beet, Holly brand. For all cooking. With \$2.50 Purchase **10 Lb. Bag 79¢**

Cling Peaches Hunts. ★ Sliced or ★ Halves. 29-oz. Can **4 for \$1**

Vienna Sausage Libby. Good for the lunch box. 4-oz. Can **4 for \$1**

Swift's Prem Canned luncheon meat. 12-oz. Can **2 for \$1**

Delsey Tissue Toilet Tissue, White and Assorted colors. 2-Roll Pak **8 for \$1**

APPLES Delicious. Extra fancy from Washington. So crisp and crunchy. For Candied Apples—each 29¢ **8 Lb. Bag 99¢**

Cottage Cheese Lucerne, All Styles—16-oz. Ctn. (32-oz. Ctn... 57¢) **29¢**

Crisp Lettuce Firm, green heads. From Texas—Head **19¢**

Bananas Golden ripe and good in so many ways—Lb. **2 Lbs. 29¢**

Red Grapes Emperor—Lb. **19¢**

Radishes So colorful and delicious—6-oz. Cello **2 for 15¢**

Coupon Worth 20¢ Off the Regular Purchase Price THREE—8-oz. Pkgs. Safeway SLICED LUNCH MEATS
Coupon Expires Dec. 3, 1966.

Mix or Match!
★ Fruit Cocktail
★ Bartlett Pear Halves
★ Cut Green Beans
★ Cream Style Golden Corn
★ Early Garden Peas
Del Monte. Buffet Cans **6 for \$1**

BABY FOOD
Heinz. Strained. Assorted fruits & Vegetables—4 1/2-oz. Glass (Available Most Stores.) **12 for \$1**

Prices and Coupons Effective Thurs., Fri. and Sat., Dec. 1, 2 and 3, in Bryan. We Reserve the Right to Limit Quantities. No Sales to Dealers.

SAFEWAY
© Copyright 1960, Safeway Stores Incorporated.