

# Aggies Take On Owls

(Continued From Page 1)  
leads with 25 catches for 416 yards and four touchdowns. Larry Lee has 20 grabs for 281 yards and one TD. Bob Long has snared 19 for 213 yards and three scores. Tommy Buckman and Ronnie Lindsey have hauled in 15 apiece and Wendell Housley 14.

If the Aggies do run more, they will have little Lloyd Curington at just about full strength to bolster the ground game. The Houston speedster has been out since the Georgia Tech game; he saw sparse duty in the SMU game but never touched the ball. With his return to form, it will give the Maroon and White a potent one-two punch, along with Housley.

Stallings' main concern this week was that the team hasn't shown the overall improvement it should, because of the injury situation. He pointed out that because of the excess injuries, the team has been unable to go full speed at practice sessions.

In reference to injuries, Stallings said Jim Singleton and Rob-

ert Cortez are still question marks for the Rice game. Bandages and tape should get the rest of the team in playing shape.

The same offensive and defensive units that started the SMU game should go for this one. This, of course, could change with the unexpected return of injured players. At any rate, Stallings says that he will go with the best he's got and hope for no more injuries.

The Aggies, 3-2 in conference play, still have an outside chance for the SWC title, but only if they win their remaining two games and SMU and Arkansas tie their game this week and lost all the rest. As one can see this probably won't happen, so it's probably "wait until next year!"

Saturday's game will present an interesting contrast between team rushing and passing. The Aggies are second in passing offense while the Owls stand seventh in passing defense. On the rushing side, Rice is second in the league in offense, while A&M is last in rushing defense. These contrasts should give a hint as to the play of the game.



**OWL THREATS**

Rice quarterback Bobby Shelton (right) and halfback L. V. Benningfield will be probing the Aggie defense Saturday. The Owls have been tough all season but have managed to win only one of their seven games.

## Fish Fall To Tech

(Continued From Page 1)

an eight-yard loss, he came right back on the next play and hit former high school teammate Bob Young for a 62-yard scoring pass play. Mark Moseley's kick made it 7-3, A&M.

Then, after the two teams traded interceptions, the Picadors scored their first touchdown on a nine-play, 68-yard drive. The drive was climaxed by Quarterback Lane Wade's two-yard pass to Ormes. With the kick good, the half ended, Picadors 10, Fish 7.

The first half statistics were rather one-sided, with Tech gaining 188 yards total offense and the Fish managing 89, including a minus three yards rushing.

Eight minutes into the third quarter, the Fish were stopped

after two straight first downs, when Harris was unsuccessful on three straight passes. The Fish punted to the Picadors and after a personal foul penalty, Tech went to work on its own 11. On second down, Ormes fumbled a Bowlin lateral and the Fish recovered on the Picador three.

Bruce Kempf, A&M's leading ground-gainer Thursday, crashed over left tackle three plays later for the score. Fish 14, Tech 10.

For the rest of the third quarter and into the fourth quarter the teams traded scoring opportunities. During this time, Moseley tried a field goal, which was wide, and the Fish defense, led by Piper and Winston Beam, held the Picadors after a 70 yard drive.

Then, with 4:23 left in the game, the Picadors pushed over their winning score after a nine-play, 50-yard drive. The tally was made by Jimmy Bennett who went over left guard for a one-yard scamper. Sanders' kick made it 17-14, Picadors.

The Fish had two more scoring chances, but the Picadors stopped them both times with timely interceptions by Ormes and defensive back Carroll Sullivan.

—Gary Sherer

## Longhorns Hit With Injuries

AUSTIN (AP)—Texas may have lost its 13th starter and last of its tri-captains to injuries, coach Darrell Royal said Wednesday.

Tackle Diron Talbert, 240-pound senior, missed Wednesday's workout because of an injured back, hurt Saturday when he collided with Baylor end Jack Eisenhart on a punt return play.

## CIVILIAN SENIORS

Will have their portrait made for the Aggieland '67

November 16 - January 15

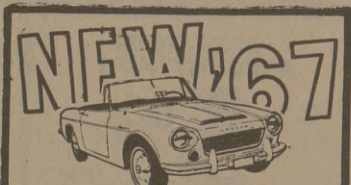
Portraits will be made at the University Studio (coat and tie).

## AGGIELAND 1967 OUTFIT PICTURES

Uniform will be Class A Winter. Outfit C.O.'s will wear sabers; seniors will wear boots and mid-night shirts. Guidons and award flags will be carried. ALL personnel in the outfit will wear the billed service cap issued by the University. The type of cap worn by underclassmen to and from the picture - taking area is left up to the discretion of the outfit C. O.

Outfits should be in front of the Administration Building by 1230 hours on the appointed day. Arrangements should be made by first sergeants with the Mess Hall supervisors to allow the outfit to be admitted to the Mess Hall early.

November 7	E2 & F2
8	G2 & H2
9	A1 & B1
10	C1 & D1
14	E1 & F1
15	G1 & H1



**NEW '67 DATSUN**  
drive a '67 DATSUN then decide!

THE COMPLETE SPORTS CAR! 96 h.p. All-synchro 4-speed. Ready to go—all you add is fun! \$2546

DEL. SPORTS EQUIP. Stubblefield's Imported Cars 3219 Texas Ave. Phone 823-6428 - Night 846-3605

## Wrestling Workouts Set Monday

A change of sponsors highlights a new season for the Texas A&M wrestling club, starting workouts in G. Rollie White coliseum Monday at 5 p.m.

Club President Bruce Davis expressed regret on the part of all the club members that conflicts in schedules made it impossible for Coach Russell Wieder to continue as sponsor for the club this year.

"However, we are also pleased at the arrival of a new sponsor, Kenneth Bottom. We didn't expect to get one so soon, especially one of his caliber in the sport of wrestling," he added.

The club had its organizational meeting last month, when officers were elected. Room 257 was chosen as the meeting place for workouts in White coliseum.

Officers elected were Davis, president; Phillip Bohn, vice president; and Doyle Sanders, secretary-treasurer.

"We expect about 30 members to attend the workout Monday. If the guys really want to get together and get in shape for competition, we may be able to participate in five or six meets this season," Davis said.

"Kenneth Bottom will help us out a lot as a team. Being a voluntary organization, we couldn't try to get any matches up if we didn't work together," he noted.

Bottom, associated with the Department of Oceanography at A&M, wrestled on a scholarship at Colorado State University.

**Mink Art Supply**  
Picture Frames  
923 So. College Ave. - Bryan, Texas

## UNIVERSAL OIL PRODUCTS COMPANY

WILL BE INTERVIEWING B.S. & M.S. CHEMICAL ENGINEERS

on

November 17, 1966

Control, Computer Activities, Process & Product Marketing, and Market Research and Economics.

Sign up for interviews at the PLACEMENT OFFICE.

## Aggies —

HAVE YOU TRIED THE C. S. C. ?  
(College Station Catch)

## A&W Drive-In

Home Of The Burger Family

Phone Orders  
846-3333

Ask your roommate  
he'll tell you where  
we're located

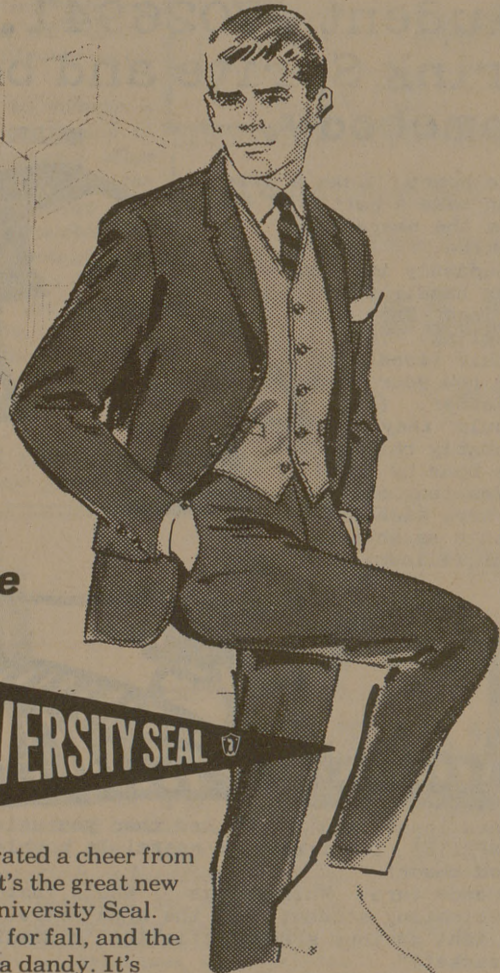
A frat man whose social existence

Was badly in need of assistance

Realized with a thud

What he needed was **Studd...**

Now he wears it, and ZAP! No resistance!



The Colgate by

**UNIVERSITY SEAL**

If ever a suit rated a cheer from the IVY set, it's the great new Colgate by University Seal. Vests are "in" for fall, and the Colgate's got a dandy. It's reversible. First it matches... then it flips to a snazzy new suede look! The Colgate is the traditional 3 button coat. It's all yours in 100% wool town and country hopsacks and classic herringbones. Groovy autumn colors include Martini Olive and Rococco Brown to name a few. Only \$55!

UNIVERSITY SEAL, Students Division, Brookfield Industries, Inc. 1290 Avenue of the Americas, New York, N.Y. 10019

## The Church..For a Fuller Life..For You..



Hillier Funeral Home

BRYAN, TEXAS  
502 West 26th St.  
PHONE TA 2-1572

## STUDENT PUBLICATION

Campus and Circle Theatres  
College Station

The Exchange Store

"Serving Texas Aggies"

## CALENDAR OF CHURCH SERVICES

ST. MARY'S CATHOLIC  
Sunday Masses—7:30, 9:00 and 11:00

OUR SAVIOUR'S LUTHERAN  
8:15 & 10:45 A.M.—The Church at Worship

9:30 A.M.—Bible Classes For All Holy Communion—1st Sun. Ea. Month

CHRISTIAN SCIENCE SOCIETY  
9:30 A.M.—Sunday School

11:00 A.M.—Sunday Service  
7:00-8:00 P.M.—Wed., Reading Rm.

8:00 P.M.—Wed. Evening Worship

A&M CHURCH OF CHRIST  
8:00 & 10:00 A.M. Worship

9:00 A.M.—Bible Study  
5:15 P.M.—Young People's Class

6:00 P.M.—Worship  
7:15 P.M.—Aggie Class

9:30 A.M.—Tues. - Ladies Bible Class  
7:15 P.M.—Wednesday - Bible Study

UNIVERSITY LUTHERAN (Missouri Synod)  
10:00 A.M.—Bible Class

11:00 A.M.—Morning Worship  
7:30 P.M.—Wednesday Vesper

CHURCH OF THE NAZARENE  
9:45 A.M.—Sunday School

10:45 A.M.—Morning Worship  
6:30 P.M.—Young People's Service

7:00 P.M.—Preaching Service

FIRST BAPTIST  
9:30 AM—Sunday School

10:45 AM Morning Worship  
6:10 PM—Training Union

7:20 PM—Evening Worship  
6:30 PM—Choir Practice & Teachers' meetings (Wednesday)

7:30 P.M.—Midweek Services (Wed.)

FIRST CHRISTIAN CHURCH  
Homeside & Ennis

9:45 A.M.—Sunday School  
10:50 A.M.—Morning Worship

5:30 P.M.—Young People

GRACE BAPTIST CHURCH  
2505 S. College Ave., Bryan

An Independent Bible Church  
9:15 A.M.—Sunday School  
11:00 A.M.—Morning Worship

7:30 P.M.—Evening Worship

ST. THOMAS EPISCOPAL  
906 Jersey Street, So. Side of Campus

Rector: William R. Oxley  
Asst.—Rev. Wesley Sellinger

8:00 A.M. & 9:15 A.M. Sunday Services

SECOND BAPTIST  
710 Eisenhower

9:45 A.M.—Sunday School  
11:00 A.M.—Church Service

6:30 P.M.—Training Union  
7:30 P.M.—Church Service

A&M PRESBYTERIAN  
7-9 A.M.—Sun. Breakfast - Stu. Ctr.

9:45 A.M.—Church School  
11:00 A.M.—Morning Worship

6:00 P.M.—Sun. Single Stu. Fellowship  
7:15 P.M.—Wed. Student Fellowship

6:45 A.M.—Fri. Communion Service  
Wesley Foundation

FAITH CHURCH UNITED CHURCH OF CHRIST  
9:15 A.M.—Sunday School

10:30 A.M.—Morning Worship  
7:30 P.M.—Evening Service

COLLEGE HEIGHTS ASSEMBLY OF GOD  
9:45 A.M.—Sunday School

11:00 A.M.—Morning Worship  
6:30 P.M.—Young People's Service

7:30 P.M.—Evening Worship

A&M METHODIST  
8:30 A.M.—Morning Worship

9:45 A.M.—Sunday School  
10:55 A.M.—Morning Worship

5:30 P.M.—Campus & Career Class  
6:30 & 6:00 P.M.—MYP Meetings

UNITARIAN FELLOWSHIP  
305 Old Highway 6, South

10:00 A.M.—Church School  
8:00 P.M.—Adult Service

CHURCH OF JESUS CHRIST OF LATTER DAY SAINTS  
26th East and Coulter, Bryan

8:30 A.M.—Priesthood meeting  
10:00 A.M.—Sunday School

6:30 P.M.—Sacrament Meeting

CENTRAL CHRISTIAN CHURCH  
3205 Lakeview

9:45 A.M.—Bible School  
10:45 A.M.—Morning Worship

6:00 P.M.—Youth Hour  
7:00 P.M.—Evening Worship

College Station's Own Banking Service

University National Bank  
NORTH GATE

Central Texas Hardware Co.  
BRYAN

• HARDWARE  
• CHINAWARE  
• CRYSTAL  
• GIFTS

Sure Sign of Flavor



SANITARY Farm Dairies

Lilly

ICE CREAM AND MILK

Bryan Building & Loan Association

BRYAN