

**Mink Art Supply**  
Picture Frames  
923 So. College Ave - Bryan, Texas

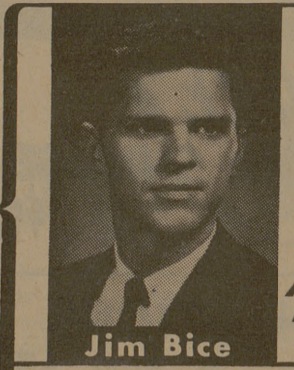
## Schmidt Wins Trip To LSU

Wayne Schmidt, secretary of the Bryan-College Station Aggie Quarterback Club, won the trip to the LSU game in Baton Rouge Oct. 8.

The club has made arrangements to have one member attend the out-of-town-games with the Aggies and Schmidt's name was drawn from the contest box.

Schmidt will accompany the team on the plane, sit in on all conferences and skull sessions, stay with the team and view the game from the Aggie bench.

Wallace Coward will make this week's trip to New Orleans for the Tulane game. His name was drawn before the Georgia Tech game.



DO YOU KNOW...

that you can have your home mortgage marked "Paid in Full" if you die?

**American Amicable**  
LIFE INSURANCE COMPANY  
EXECUTIVE OFFICES, WACO, TEXAS

Jim Bice

Oakwood Professional Bldg. Bryan, Texas VI 6-7963

## SOSOLIK'S

TV & RADIO SERVICE  
Zenith - Color & B&W - TV  
All Makes - TV - Repaired  
713 S. Main 822-1941



FROM THE

## Sidelines

By Gerald Garcia

### Ags, Hogs, Horns, SMU Will Win Saturday's Tilts

After consulting the dusty crystal ball, it is time to go out on the limb and pick the upset. It is still too early in the season to really know the teams but two games — Syracuse and UCLA and A&M and Tulane — will take a little courage to pick.

Last week's score: 6-1 for .857. Not bad for the first week.

Now for this week's picks:

**A&M over Tulane by seven:** Even though the Aggies tied the worst opening day defeat in the school's history and Tulane scored its first win in the opener in six seasons, it looks like A&M from here. The offensive changes in the Aggie alignment should help A&M's passing and running. Look for Edd Hargett to find the range he lacked at Georgia Tech, and for the Aggie defense to jell. Tulane's quarterback Bobby Duhon should give the Aggies trouble early, but Hargett will overshadow him.

**Baylor over Colorado by 10:** Terry Southall will continue his masterful passing and the Baylor defense is too tough for Colorado.

**Texas over Texas Tech by 15:** It doesn't matter how the Red Raiders fare during the previous season game because when they play Texas the Raiders are always dead. Look for Darrell Royal to have an improved defense and for Super Bill (Bradley), who last week looked like Super Bust, to pass better and lead the Horns to their victory.

**Ohio State over TCU by eight:** After last week's great morale victory over Nebraska, the Horned Frogs could rebound and take Ohio State. But from here it looks like Ohio State because they have too many horses.

**SMU over Navy by 10:** An opening game victory gives a team momentum and SMU will continue where they left off from the Illinois game. Max White and sophomore end Jerry Levias will again work together on a TD pass.

**LSU over Rice by 15:** Rice is too thin for the big Tigers. The win over former coach Paul Dietzel, who coached LSU into the national picture and is now at South Carolina, will help the Tigers.

**Arkansas over Tulsa by three:** This is a tough one. The Hogs did not look good last week playing Oklahoma State and Tulsa routed Tampa. But even with the passing of Greg Barton, who connected on 24 of 45 attempts, and a proud defense, Tulsa will run out of steam and the Hogs will take advantage.

**Syracuse over UCLA by six:** UCLA is the nation's No. 2 ranked team and they have Gary Beban, one of the nation's top passers, but scampering Floyd Little will run wild and help Syracuse control the ball, giving Beban few chances to show his passing form.

**Other games:** Notre Dame over Purdue by six, Alabama over Louisiana Tech by 25, Michigan over California by six, Duke over Pittsburgh by 10 and Michigan State over Penn State by 20.

## Singleton Sets Sights On Saturday's Tulane Tilt

Jim Singleton, Texas A&M center, looks forward to Saturday's football clash with Tulane with his sights set on aiding the Aggies to their first win of the season.

The senior from San Antonio handles a tough position for A&M and does it extremely well. His regular starting position finds him snapping the ball from center, but Singleton is also the first substitute for both offensive guards.

Singleton likes the challenge of playing center. "It's hard to play center," he said "because you have to get rid of the ball before you block anybody."

The stocky letterman is one of a few "fifth year" men on the Aggie squad this year. He feels being held out of varsity action

his sophomore year gives him a little better," he commented.

"And it gave me the opportunity to play under Coach Stallings for two years. The best thing that ever happened to me," he went on.

On the field the fifth year senior plays a pretty tough harding double major in architecture and architectural design and architectural construction. A normal class load is 17 or 18 hours for athletes yet last semester he carried 20 hours and posted a grade point ratio on A&M's point system and he is carrying a 20-hour load again this semester while playing football.

## STOP AND CHECK WHAT WE SELL

- Converse All Star & U. S. Keds Tennis Shoes
- Handballs & Gloves
- Soccer Shoes
- A&M Stadium Blankets
- Gym Shorts & Sox
- Wool & Orlon Sweaters
- Tennis Rackets & Balls
- Sporting Goods Of All Kinds
- Close-Out On School Supplies

**ED GARNER'S**  
STUDENT CO-OP STORE

North Gate

QUALITY COMES 1<sup>ST</sup> AT FIRESTONE

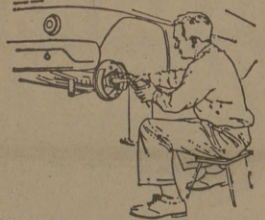
Your safety is our business at

# Firestone

## BRAKE ADJUSTMENT ONLY

Our expert brake mechanics do all this work

- 1 Pull front wheels and inspect brake lining and drums.
- 2 Clean, repack and adjust front wheel bearings.
- 3 Adjust brakes and add fluid.



# \$119

Any American Car



# 2 TIRES FOR \$19

6.70-15 Tube-type Blackwall Plus \$3.16 Fed. excise tax, sales tax, and 2 trade-in tires off your car.



## Firestone NYLONAIRE TIRES

- FIRESTONE SUP-R-TUF RUBBER for maximum tire mileage
- FULL 7-RIB TREAD for excellent traction on wet and dry roads
- SAFETY-TENSIONED NYLON CORD BODY for maximum protection against impact breaks
- RUGGED SUPER-WELD CONSTRUCTION for greater safety at turnpike speeds

SIZE & TYPE	BLACKWALLS	WHITWALLS	Fed. Excise Tax
7.50-14 (7.75-14) Tubeless	2 FOR \$26	2 FOR \$30	\$3.76
8.00-14 (8.25-14) Tubeless	2 FOR \$32	2 FOR \$36	4.18
6.70-15 (7.75-15) Tubeless	2 FOR \$26	2 FOR \$30	3.82
6.70-15 (7.75-15) Tube-Type	2 FOR \$19	2 FOR \$23	3.16
6.00-16 Tube-Type	2 FOR \$20	—	3.04

All prices PLUS TAXES and 2 trade-in tires off your car. (Size listed also replaces size shown in parenthesis)

Sup-R-Tuf Super-Weld - Firestone TM

# NO MONEY DOWN

PUT THEM ON YOUR CAR TODAY!

All Tires mounted FREE

**NATIONWIDE GUARANTEE**  
No Limit on MILES... No Limit on MONTHS

FULL LIFETIME GUARANTEE against defects in workmanship and materials and all normal road hazard injuries encountered in everyday passenger car use for the life of the original tread design in accordance with terms of our printed guarantee certificate. Price of replacement pro-rated on original tread depth wear and based on Firestone adjustment price which may or may not be the same as original purchase price of replaced tire or actual current selling price of replacement.

Priced as shown at Firestone Stores; competitively priced at Firestone Dealers and at all service stations displaying the Firestone sign.

# FIRESTONE STORES

Phone 822-0139 HOURS 8 A. M.—6 P. M. Corner College Avenue & 33rd Street

# Weingarten's

WE KEEP PRICES DOWN

PRICES GOOD THROUGH SATURDAY, SEPT. 24. WE RESERVE THE RIGHT TO LIMIT.

## FARMER BROWN FRYERS

U.S.D.A. Grade "A"

Whole Lb. 27<sup>c</sup>

CUT-UP Lb. 33<sup>c</sup>



VALUABLE COUPON  
FREE - 100  
Big Bonus Stamps  
With \$10 Purchase or More  
Coupon Expires Sept. 24, 1966.

## COOKIES

With \$2.50 Purchase

12 Btl. Ctn. Plus Dep. 59<sup>c</sup>

## PEACHES

Food Club Sliced or Halves

No. 2 1/2 Can

25<sup>c</sup>

## SUGAR

Imperial Pure Cane

With \$2.50 Purchase

5 Lb. Bag

39<sup>c</sup>

## BOLOGNA

Mohawk or Swift By The Piece

Lb.

39<sup>c</sup>

## GRAPES

Flaming Tokay

Lb.

10<sup>c</sup>