

A&M Prof, Student Help In Isle

EDITOR'S NOTE: The following story is about a Texas A&M student and professor who are working in Honolulu, Hawaii, on an architectural project. The story is reprinted from the Honolulu Star-Bulletin and Advertiser.

Restorationists deal in drawings, not prose, and eight architectural students are preparing precise, measured drawings of a number of island buildings as the first step in restoring them to bygone splendor.

The students, under the direction of Melvin M. Rotsch, professor of history of architecture at Texas A&M University, have just completed the only measured drawings of Iolani Palace, the only royal palace in America.

Charles Peterson, prominent Philadelphia architect and one of the nation's leading restorationists, described the Palace drawings as "excellence and very professional."

The students are here under the auspices of the Historic American Buildings Survey, which is under the administration of the National Park Service. Several of them will leave for Lahaina, Maui, to work with the Lahaina Restoration Foundation in preparing data there.

"These kinds of drawings are essential," Peterson said. "Restorationists work with drawings, not words."

A minutely detailed drawing of the Palace was prepared by E. Davis Chauviere, 20, of Waco, Tex. He is a senior at Texas A&M.

For the past month, Glenn Gunter of Kailua, and Ronald Saiki of Honolulu, both University of Hawaii students, and Alan Maurigame of Kauai, a student at Montana State University, have scammed around the Palace, including the roof-top, gathering measurements for Chauviere.

The Junior League is raising funds for actual restoration of the Palace. State Comptroller Val U. Marciel administers some State funds for the project.

The League is selling advance tickets to the film "Hawaii" to help raise money for the restoration. A spokesman said it is hoped that the Palace will be converted into a "lively" building, not one with a museum atmosphere.

Peterson said he would like to see the Palace restored to its condition in 1893, the year the monarchy ended. He said it did not change much between 1882—the year it was completed—and 1893.

"Electric lights were substituted for gas about 1886," he said.

There used to be a high stone wall around the Palace, which was torn down during a rebellion, he said. It wasn't restored there because "the haoles were afraid the king could defend himself."

Peterson would like to have the furnishings in the Palace in 1893 on display there, when it is restored. Much, however, probably is lost forever.

While climbing around the attic last week, a yellowed House Journal, vintage 1911, was discovered in a room open to the weather and bugs. It contained on Page 906 a resolution which showed how Palace furnishings were lost.

"There is now stored in the Archives Building," the resolution noted, "a certain chest of silverware that was used in the Palace during the reign of His Majesty, King Kalakaua.

"Whereas, no good purpose can be served by retaining said chest of silverware in the custody of the government . . . the Board of Commissioners of Public Archives is hereby authorized and directed to surrender and deliver to said Honorable Jonah K. Kalaniana'ole the said chest of silverware . . ."

Before the architectural students and Rotsch complete their summer work, they hope to have prepared measured drawings on the old Courthouse, Chamberlain House, Iolani Barracks, Washing-

ton Palace, the old Honolulu post office and the Palace coronation pavilion and bandstand.

Jack E. Bousher of Northfield, N.J., one of the nation's top photographers of historic buildings, is due here soon to take pictures of Aliioli Hale, Mission House, Mission Printing Shop, the Mission Adobe Schoolhouse, Kukui area shrines and CinCPac Headquarters at Makalapa.

"Most people don't think of CinCPac Headquarters as historic because it is a recent building," Peterson said.

"But at no time has anything in Hawaii been so important in world affairs."

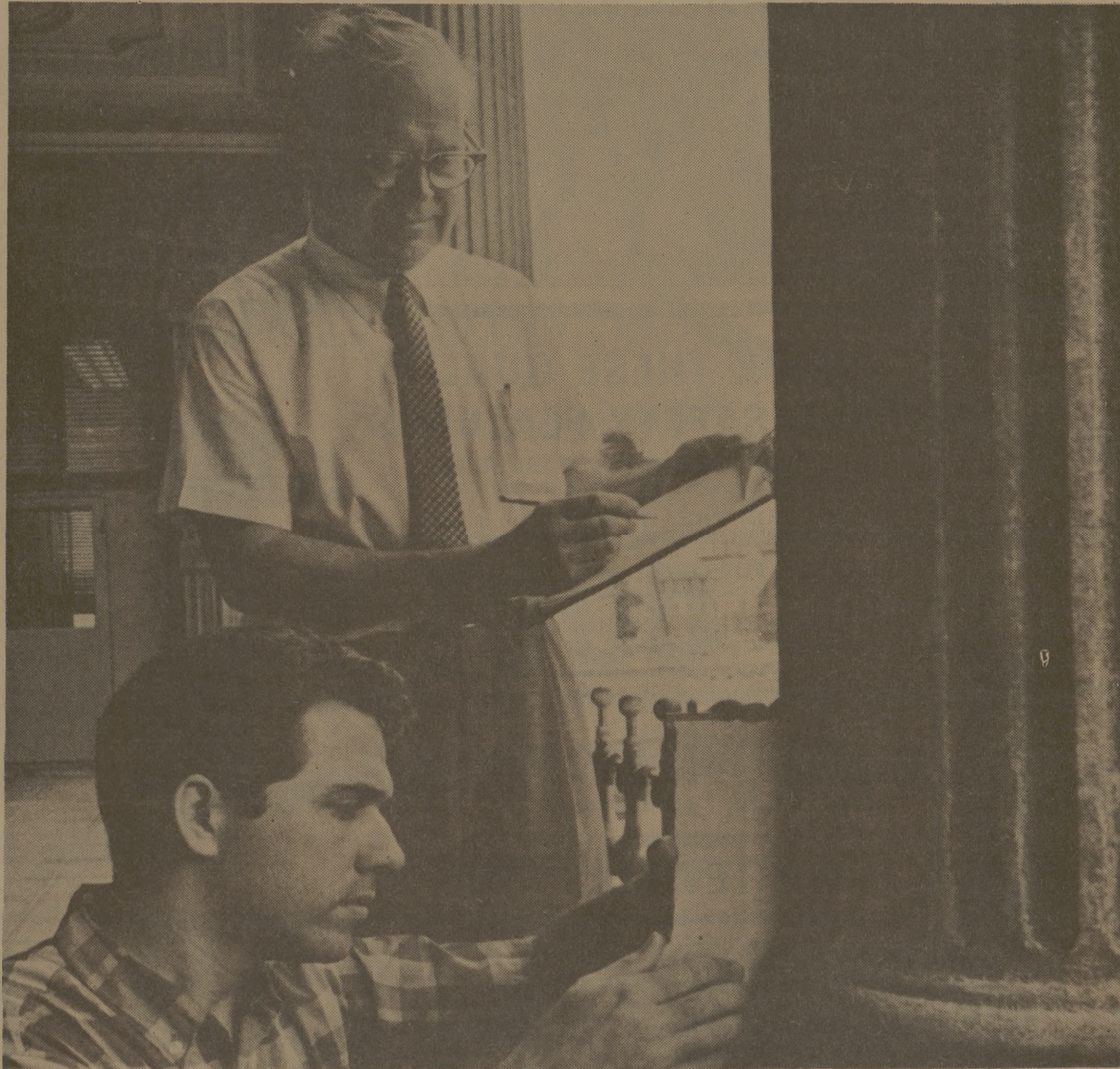
Peterson has a rule of thumb for buildings worth saving. It goes like this:

"Don't let them pull anything unless they are committed to put

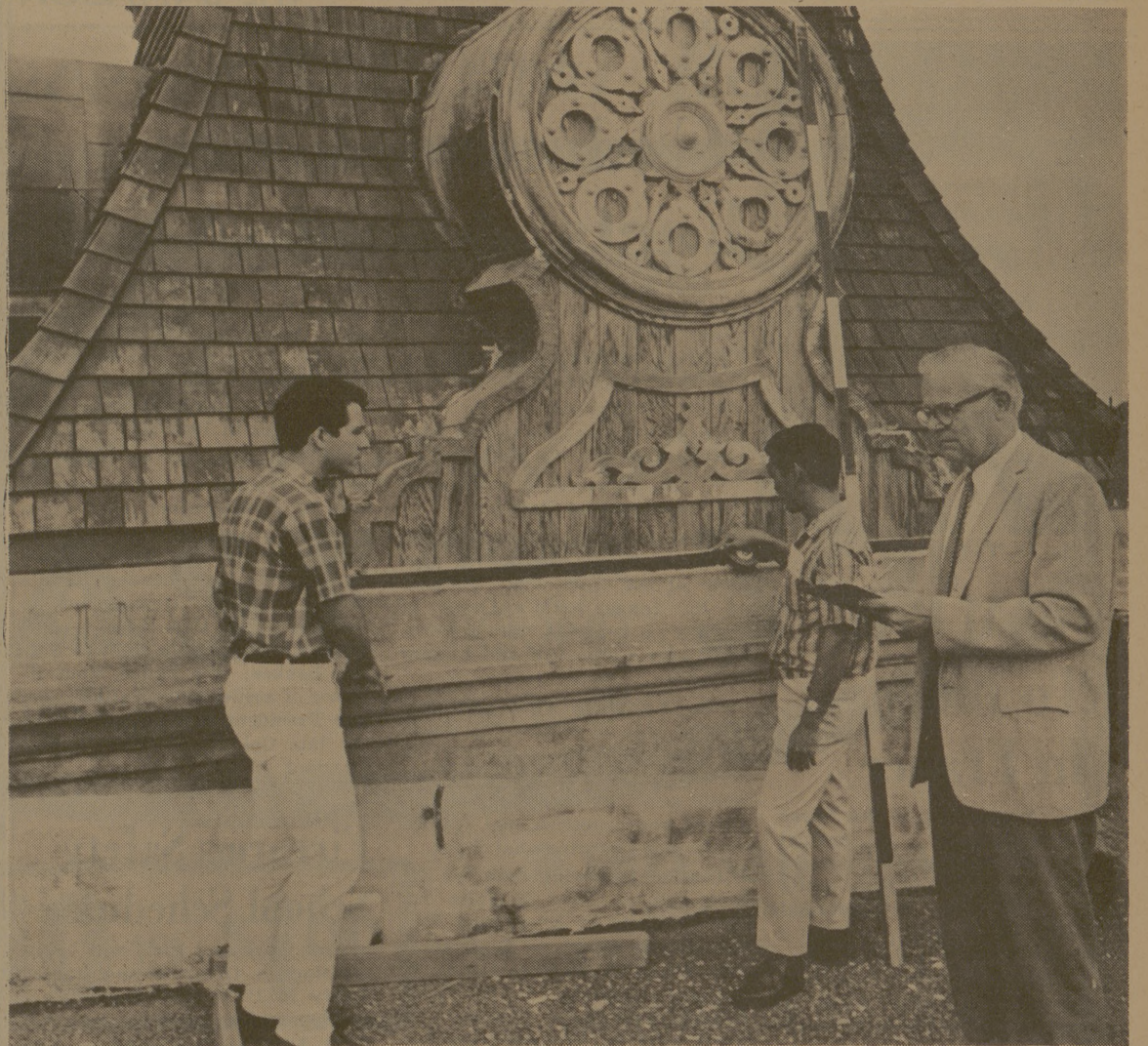
up something better. And it isn't better because it's newer or bigger."

"Don't be led astray by pretty drawings of what is planned. In my lifetime, I've sold so many bum ideas with pretty drawings that I'm suspicious of every one of them.

"In Hawaii you must especially watch out for the guy who draws pretty coconut palms."



STUDENT GLENN GUNTER, LEFT, AND TEXAS A&M PROFESSOR MELVIN M. ROTSCH.



STUDENTS AND ROTSCH CHECK BUILDING FOR RESTORATION. (Photos by Honolulu Advertiser)

California's new dam in Feather River Canyon will impound enough water to supply every household in the state for a year.

Mink Art Supply
Picture Frames
923 So. College Ave.—Bryan, Texas

EXPECTING?

Complete Maternity Department

Complete line of boys & girls wear

JOYCE'S
608 S. College—822-2864



- Watch Repair
- Jewelry Repair
- Diamond Senior Rings
- Senior Rings Refinished

C. W. Varner & Sons
Jewelers
North Gate 846-5816

"I ALWAYS DO BETTER WHEN I SHOP SAFEWAY"



Johnson's Pledge
Infant Spray Wax 7-oz. Can **73¢**

Coupon Worth 50 GOLD BOND STAMPS
With the Purchase of 2-Lb. Pkg. Wingate PORK SAUSAGE
Coupon Expires August 20, 1966.

Coupon Worth 50 GOLD BOND STAMPS
With the Purchase of 7-oz. Can Easy-Off Spray OVEN CLEANER
Coupon Expires August 20, 1966.

Coupon Worth 25 GOLD BOND STAMPS
With the Purchase of ONE Head LETTUCE
Coupon Expires August 20, 1966.

Coupon Worth 75 GOLD BOND STAMPS
With the Purchase of Any 3-Lb. or Larger BEEF ROAST
Coupon Expires August 20, 1966.

Jell-Well Pudding 7¢
★ Butterscotch ★ Chocolate ★ Lemon ★ Vanilla—Reg. Pkg.

Golden Corn 5 for \$1
Del Monte, Cream Style or Whole Kernel—1-oz. Can

Fruit Drink 29¢
Lettin, Pineapple-Grapefruit—16-oz. Can

Corn Meal 5 Lb. 39¢
Kitchen Craft, White or Yellow.

Toilet Tissue 2 Roll 25¢
Aurora, White or Assorted colors.

Cane Sugar 10 Lb. 79¢
Imperial. Gives you all the energy you need.
With \$2.50 Purchase

Cream Pies 25¢
Bel-air. Frozen. ★ Banana ★ Chocolate ★ Coconut ★ Lemon—14-oz. Pkg.

Bakery Fresh ...
Wheat Bread 19¢
Skyline, Crushed. (Reg. 23¢)—1-Lb. Loaf
Fruitt Snack 27¢
Burger Buns 23¢
Mrs. Wright's Raisin-Buns (2¢ off)—3-Ct. Pkg.
Mrs. Wright's 8-Ct. Pkg.

Dairy Case Values!
Buttermilk 47¢
Half & Half 37¢
Sour Cream 59¢
Lucerne—1/2-Gal. Ctn.
Lucerne—Pint Ctn.

Griffin Polish 2 for 29¢
Liquid. ★ Black ★ Brown ★ White—2-oz. Bottle

Freshness and Quality at Safeway!
Peaches 19¢
Yellow Freestone. Sweet and juicy with a just picked flavor. Looks so good . . . tastes so sweet. Lb.

Sherbet 59¢
Lucerne, Party Pride. ★ Orange ★ Pineapple ★ Lime ★ Raspberry—1/2-Gal. Ctn.

Potatoes 10 Lb. 49¢
Red. The finest money can buy. An all time favorite. 10 Lb. Bag

Cucumbers 10¢
Fresh and crisp. Adding zing to salad—Each 10¢

Strawberries 29¢
Bel-air, Sliced. Serve shortcake often—10-oz. Pkg.

Bartlett Pears 19¢
Italian Prunes
Valencia Oranges } Lb. 19¢

Dr Pepper 6 Bottle 39¢
Regular or King Size. (Plus Deposit) 6 Bottle Ctn.

Avocados 2 for 29¢
Hass. Make a dip—Each 2 for 29¢

Pork & Beans 10¢
Van Camp. Good for summer meals—16-oz. Can

White Onions 2 Lb. 29¢
A natural with meat.

Cling Peaches 4 for \$1
Hunt's. Sliced or Halves—29-oz. Can

Fab Detergent 49¢
With Borax. Really cleans. (10¢ off label). 49-oz. Box
With \$2.50 Purchase



Guaranteed Meats at Safeway!
FRYERS Lb. 29¢
Fancy. U.S.D.A. Inspected, Grade A. Meaty and tender. Fry to a golden brown. Whole. (Cut-Up 35¢)
Manor House, U.S.D.A. Inspected, Grade A—Lb.

Boneless Roast 79¢
Beef Shoulder. U.S.D.A. Choice Heavy Beef—Lb.

Chopped Sirloin 59¢
Ready to cook. Pkg. of two—5-oz. steaks.

Armour Franks 59¢
Armour Star or Safeway. All meat. 1-Lb. Pkg.

Ducks 49¢
Manor House, Inspected, 5 to 5 1/2-Lb. Avg.—Lb.

Boneless Ham \$1.35
Samuel's Mohawk. "Chieftain"—Lb.

Cube Steaks \$1.05
Manor House, Beef. Easy to prepare—20-oz. Pkg.

Sausage 2 Lb. 95¢
Pork. Wingate. Regular or Hot.

Coupon Worth 100 GOLD BOND STAMPS
With the Purchase of 3-Lb. Can EDWARDS COFFEE
Coupon Expires August 20, 1966.

Coupon Worth 50 GOLD BOND STAMPS
With the Purchase of 3-Lb. Can Royal Satin SHORTENING
Coupon Expires August 20, 1966.

Coupon Worth 50 GOLD BOND STAMPS
With the Purchase of 1/2-Gal. Ctn. Lucerne Party Pride ICE CREAM
Coupon Expires August 20, 1966.

SPECIAL NOTICE!
Saturday, August 20 is the last day to redeem your "Magic Dime" cards. Shop Safeway and Save Gold Bond Stamps!



SAFEWAY

OPEN YOUR ACCOUNT NOW!
5% Per Annum
Paid Quarterly on INSURED SAVINGS AT
FIRST FEDERAL SAVINGS AND LOAN ASSOCIATION
2913 Texas Ave.
MEMBER NATIONAL HOME LOAN BANK SYSTEM