

Polish Chemist To Inaugurate Program Here

A Polish chemist, Dr. Aleksander Kreglewski, has joined the Thermodynamics Research Center in the Department of Chemistry.

The visiting associate professor of physical chemistry will initiate a new program of TRC studies in the area of theory of solutions and critical properties of highly branched isomeric hydrocarbons, announced Center Director Dr. Bruno J. Zwolinski.

Kreglewski is head of the Equilibrium Phase Study Laboratory, Institute of Physical Chemistry, Polish Academy of Sciences in Warsaw.

During his Texas A&M tenure, the scientist will lecture and consult with graduate students and staff members with related research interests.

Kreglewski received his Ph.D. in physical chemistry under Professor W. Swietoslowski, former Director of the Warsaw Institute of Physical Chemistry. After a post-doctoral fellowship at Carnegie Institute of Technology with F. D. Rossini and Zwolinski, he returned to Warsaw in 1960 to organize work on theoretical and experimental studies of binary non-electrolyte solutions.

Harrell Selected To Serve In U. S. Education Office

Dr. Roger L. Harrell of the Department of Education and Psychology has been selected for a year's service as associate in the U. S. Office of Education beginning Sept. 1.

Varied assignments in the Washington office will provide Harrell an understanding of federal-state-local relationships in education from a nation-wide viewpoint and the Office of Education's role.

"This year of experience will improve our relationship with the office and give one of our staff members training and experience he could not get any other way," Dr. Paul Hensarling, department head, said of the leave of absence.

An early summer doctoral candidate at New Mexico University, Harrell will serve in the Bureau of Elementary and Secondary Education as research, programs and administrative assistant in the office. He is one of 50 candidates selected. One per state university out of 90 such U. S. institutions were picked.

The Portales, N. M., native works in secondary curriculum and science education in the A&M department. He has charge of undergraduate science education students and directs the media lab.

Harrell earned three degrees at Eastern New Mexico, taking the B.S. in 1956, M.A. in 1959 and a Science Education degree in 1963. He joined the A&M education staff in 1965.

Faculty Members Attend Conference

Two Texas A&M faculty members will participate in a National Foreign Policy Conference for Educators in Washington June 16-17.

Attending will be Dr. M. T. Harrington, International Programs coordinator, and Dr. Paul Hensarling, Department of Education and Psychology head.

The conference highlights foreign policy issues and provides a forum for discussion of world affairs. The role of education in international relations will be discussed among government officials and leaders of American education.

Secretary of State Dean Rusk, presidential assistants Walt Rostow and Douglass Cater and assistant secretaries William P. Bundy, Far Eastern Affairs; Dr. Charles Frankel, Educational and Cultural Affairs, and Francis Keppel, Health, Education and Welfare, are speakers.

Seminars include "Bringing the World Into Teacher Education," "World and Regional Organizations" and "Economic Development and Population Pressure." Other topics deal with science, decision making and teaching case studies in relation to foreign policy.

The two-day conference will be held in the State Department,

With The Purchase of \$2.50 or More (Excluding Cigarettes)

MIRACLE WHIP

SALAD DRESSING

QT. JAR 39¢



Saving In All Departments

Star-Kist—Chunk TUNA	3 No 1/2 Cans	89¢
Shurfine FLOUR	5 Lb. Bag	45¢
Pillsbury—Sugar COOKIES	2 Pkgs.	89¢
Shurfine CORN MEAL	5 Lb. Bag	39¢
Del Monte PEAS	5 303 Cans	88¢
Del Monte CATSUP	4 20-Oz. Btls.	\$1.00

Preserves Kraft's Strawberry	18-Oz. Jar	49¢
Cream Pies Morton's Frozen	14-Oz. Each	29¢
Strawberries Food King Frozen	4 10-Oz. Pkgs.	\$1.00

B-B-Q Sauce

Kraft 18-Oz. Btl. **35¢**

Evap. Milk

Carnation Tall Can **7 For \$1**

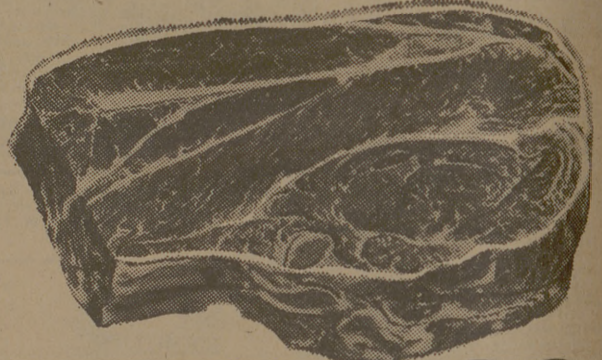
Spare Ribs

Lean Meaty Avg. 5 Lbs. and Up **Lb. 39¢**

Heavy Aged Beef BONELESS ROAST English Cut	Lb.	79¢
Boneless—Rolled CHUCK ROAST	Lb.	69¢
Shoulder Swiss Steak or SEVEN STEAK Heavy Beef	Lb.	59¢
Heavy Aged Beef ARM ROAST	Lb.	55¢

CHUCK ROAST

Heavy Aged Beef **lb 39¢**



PINTO BEANS Arrow Dried	2 Lb. Bag	29¢
Northern TOILET TISSUE 4 Roll Package	3 Pkgs.	\$1.00
BLACKEYE PEAS Homefolk	7 300 Cans	\$1.00
MARGARINE Meadolake	1-Lb. Ctn.	27¢

★ WE GIVE ★



★ GREEN STAMPS ★

ICE CREAM

A. F. Brand 1/2 Gal. Ctn. **49¢**

HAM Rath's, Blackhawk—Canned	5 Lb. Can	\$4.99
BACON Rath's, Blackhawk—Sliced	Lb.	79¢
CHEESE Wisconsin, Hoop	Lb.	79¢

LOOK WHAT 1c EXTRA WILL BUY at ORR'S

RONSONAL Lighter Fluid 4-Oz	29¢	"Plus 1¢" 2 For 30¢
BOBBY PINS Pkgs.	25¢	"Plus 1¢" 2 For 26¢
VO-5 SHAMPOO	\$1.69	"Plus 1¢" 2 For \$1.70
H-L-H ALCOHOL Pt.	19¢	"Plus 1¢" 2 For 20¢
PEPSODENT Tooth Brush	69¢	"Plus 1¢" 2 For 70¢
ENVELOPES or Tablets	25¢	"Plus 1¢" 2 For 26¢

Fresh Crisp Iceberg

LETTUCE

Large Head **9¢**

Cherries Fresh Bing **49¢ lb**

King's—Fresh Home Grown PEACHES **lb. 1¢**



RADISHES or Green Onions Mix or Match	2 for 15¢
Fresh Flavorfull—Yellow Onions 3 lbs.	25¢
Genuine—Calavo Avocados ea.	10¢

—COUPON—

100 FREE S&H GREEN STAMPS

With This Coupon And The Purchase Of \$10.00 or More (LIMIT ONE PER PERSON) MUST BE ONE PURCHASE (Cigarettes Excluded)

Void After Sat. June 4, 1966.

DRINK REFRESHING

COKE'S 12 Btl. Ctn. 49¢

Limit One Carton With \$2.50 Purchase or More

Cottage Cheese Carnation 16-Oz. Ctn.	19¢
Medium Eggs Cackleberry Grade A—Doz.	2 69¢

TWO CONVENIENT LOCATIONS

3516 Texas Ave. Ridgcrest 200 E. 24th Street Downtown

Best in Bryan

ORR'S

Super Markets