

TRILLINGHAM

### Top Educator To Address June Meetings

Los Angeles County superintendent of schools Dr. Clinton C. Trillingham will discuss the intermediate unit in state educational organization in annual Texas A&M June conferences next month.

The California educator will speak three times in the June 13-15 conferences in the Memorial Student Center.

Trillingham, LA County superintendent since 1942, will speak to the Texas Association of Instructional Supervisors, Texas Association of County Superintendents (TACS) and a general assembly.

The Texas School Administrators Association also meets in the three-day conferences sponsored by the Department of Education and Psychology in cooperation with the National School Public Relations Association. About 600 Texas educators will attend.

"Trillingham is the No. 1 school administrator in the United States," said Dr. Grady Parker, education professor.

Trillingham's knowledge of intermediate units, being state educational service closer to schools, is of interest to TACS members, he added.

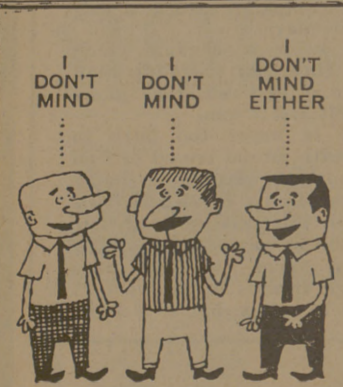
The Texas group advocates reorganization of county districts to intermediate formation. Such legislation has been proposed twice, going to committee stage in the last Texas legislative session.

Past president of the American Association of School Administrators, Trillingham has been associated with California schools since 1931, when he instructed in the Los Angeles School of Citizenship.

He was a teacher, principal and superintendent in Kansas schools nine years and studied at Kansas' Southwestern College. The author of textbooks and numerous articles obtained advanced degrees at the University of Southern California. He holds honorary doctoral degrees at three colleges.

He is a summer session lecturer at Utah, Southern Cal, California, Stanford and Hawaii Universities and Whittier and Occidental Colleges.

LET'S KEEP  
**TUNNELL**  
RAILROAD COMMISSIONER  
Pd. Pol. Adv.



### meeting of the don't minds

If you don't mind having all the details of planning a banquet or convention taken care of for you, call Ramada Inn. We'll make sure your meeting is trouble-free... no matter what size your group!

Try our fast, friendly breakfast and luncheon service.

"Luxury for Less"  
**RAMADA INN**  
Bryan-College Station  
846-8811

## Free Over 1,000,000 S&H GREEN STAMPS

To Be Awarded By Thrif-Tee Food Stores  
GET YOUR CARD TODAY—IT MAY WIN  
50,000-5,000-200-100  
S&H GREEN STAMPS

## WIN A '66 MUSTANG!

"Play Gifts Galore"



NO PURCHASE NECESSARY  
EVERY CARD A WINNER!

GET YOUR  
CARD TODAY

### HUNT'S FRUIT COCKTAIL

4 300 Cans \$1

Del Monte — Tomato  
**CATSUP** 5 14-Oz. Btls. \$1.00

Kraft  
**MACARONI DINNER** 3 For 59c

Del Monte  
**GARDEN PEAS** 5 303 Cans \$1.00

Del Monte — Cream Style  
**CORN** 5 303 Cans \$1.00

**BRIQUETS** Charcoal Energy

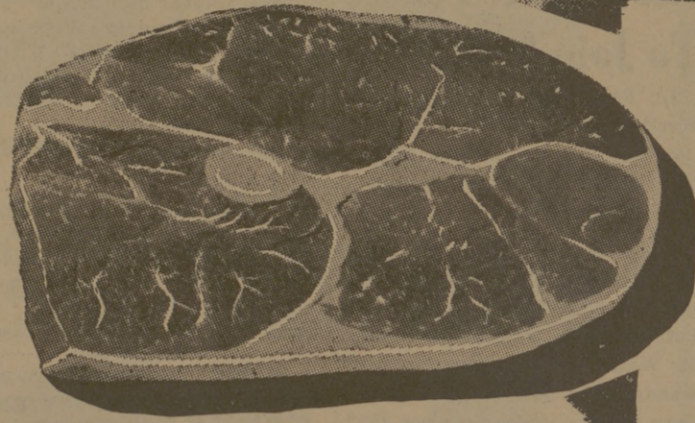
Family Size — 6¢ Off 95¢ Size  
**GLEEM TOOTH PASTE** 59c

Shurfine  
**SHORTENING** 3 Lb. Can 69c

½ Gallon — Plastic Bottle  
**ENERGY BLEACH** 25c

Shurfrost, Frozen — Beef, Chicken, Turkey  
**MEAT PIES** 6 8-Oz. Pkgs. \$1.00

Shurfine, Frozen  
**ORANGE JUICE** 4 6-Oz. Cans 69c



"Thrif-T-Trim"  
Baby Beef

**Round STEAK**  
... lb **79c**

Pikes Peak Roast or  
**RUMP ROAST** Lb. 75c

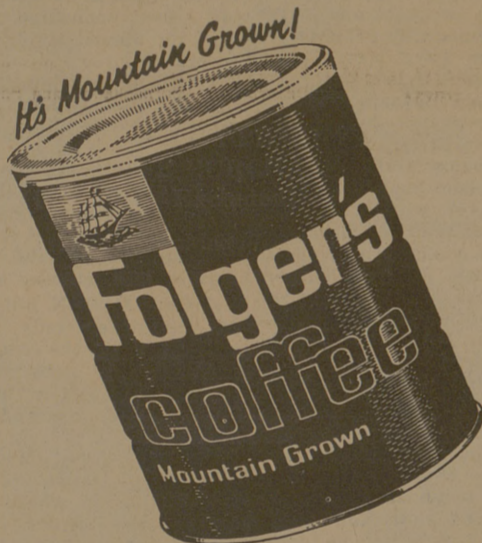
Mohawk, Canned  
**PICNICS** 3 Lb. Can \$1.88

Boston Butt  
**PORK STEAKS** Lb. 49c

Rath's, All Meat  
**BOLOGNA** Sliced Lb. 49c

### PEACHES

Hunt's Sliced or Halves 4 No. 2½ Cans \$1



FOLGER'S 1-lb. can  
**COFFEE** 49c

Limit One With Purchase of \$2.50 or More Exc. Cigarettes

Shurfine — Evaporated  
**MILK** 8 Tall Cans \$1

Cackleberry — Grade A  
**EGGS** Large 47c

PRICES GOOD  
THUR. - FRI. - SAT.  
MAY 5 - 6 - 7.  
QUANTITY RIGHTS  
RESERVED  
We Give S&H Green Stamps  
The Nations Number  
One Stamp Plan.

## CORN

Florida Fresh Golden

6 Full Ears 39c

## RUSSET POTATOES

U. S. No. 1

10 pound bag 59c

—COUPON—  
100 FREE S&H GREEN STAMPS  
With This Coupon  
And The Purchase Of  
\$10.00 or More  
(LIMIT ONE PER PERSON)  
MUST BE ONE PURCHASE  
(Cigarettes Excluded)  
Void After Sat. May 7, 1966

DRINK DELICIOUS

**7-UP** 12 Btl. Ctn. 49c

LIMIT ONE WITH PURCHASE OF \$2.50 OR MORE

A. F. BRAND

**ICE CREAM** ½ Gal. Carton 49c

WE GIVE S&H GREEN STAMPS

2 CONVENIENT LOCATIONS  
3516 Texas Avenue.....Ridgecrest  
200 E. 24th Street.....Downtown

