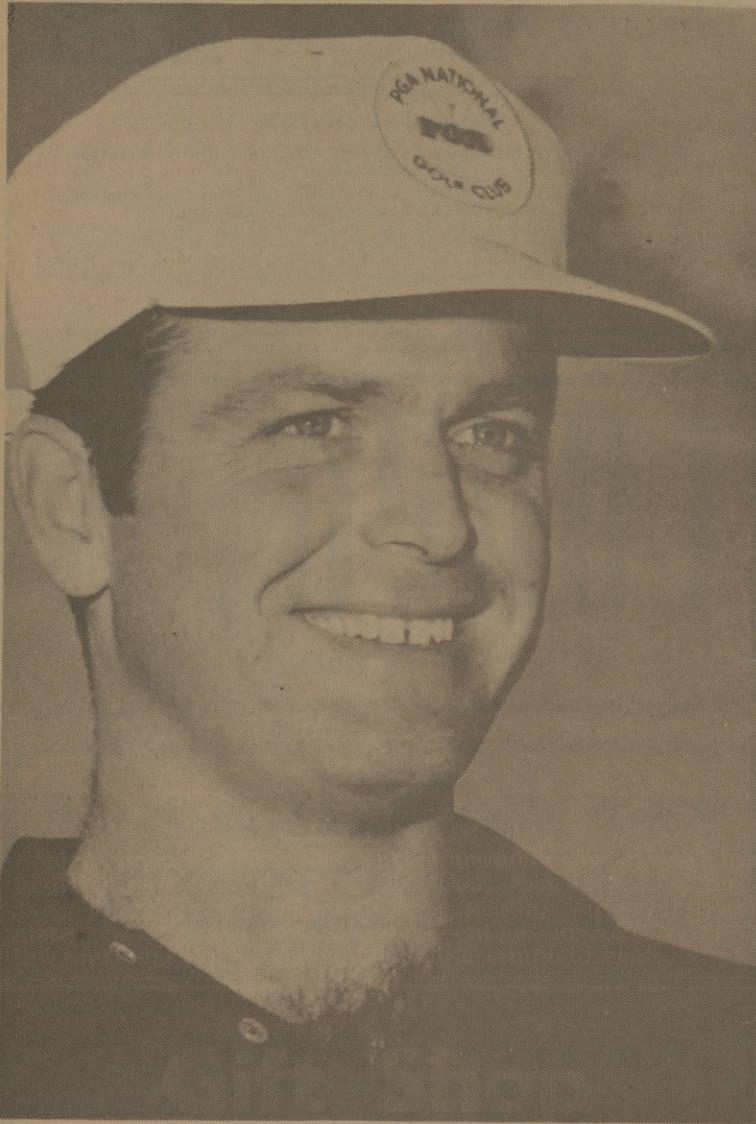


# Nichols, Martindale Tee Off At 10 A.M. Monday



Two coaches, a golf pro, banker, oilman and collegiate golfer will play an exhibition match with greats Bobby Nichols and Billy Martindale at Texas A&M Monday.

Entries in A&M's 1966 International Golf Tournament will attempt to beat the best score by Martindale or Nichols in two weeks of play Monday through May 15.

Two foursomes will tour A&M's golf course Monday. With Nichols, 1964 PGA champion and contender in most of this season's tourneys, will be playing his golf coach at A&M, Henry Ransom, head football coach Gene Stallings and Bryan Country Club course pro Fred Marberry.

Teeing off with Martindale will be Bryan banker Travis (Ace)

Bryan, Jack Crichton (pronounced crayton) of Dallas, A&M graduate of 1937 and president of Oil and Gas Management, and Lee McDowell of Baytown, No. 1 golfer on A&M's 1966 team.

Gallery tickets for the 10 a.m. exhibition match are \$1 for adults, children and students and may be obtained at various locations in Bryan and College Station.

Howard Vestal, ticket chairman, announced the identifying tickets may be acquired at all banks and loan associations, Ramada and Holiday Inns, the Chamber of Commerce, Shaffers, Holicks, Waldrop's and Ellison's at the North Gate and at the Memorial Student Center, Exchange Store and golf shop at A&M.

Golfers wishing to compete against Nichols and Martindale must register before Saturday.

Entries, including \$5 fee for university friends, former students and adults, should include the name and address of contestant, certified handicap and home course. Entries must be post-marked no later than Sunday and sent to the Texas A&M Golf Course, College Station.

Competitive rounds must be played between Monday and May 15 and scores reported by May 23.

**SOSOLIK'S**  
TV & RADIO SERVICE  
Zenith - Color & B&W - TV  
All Makes - TV - Repaired  
713 S. Main 822-1941

## Read Battalion Classified

**? — LUNCH TIME — ?**  
"Especially Designed For"  
**CAMPUS STAFF AND OFFICE PERSONNEL**

- Quick Service
- Tasty Foods
- Old Fashioned Ice Cream Parlor
- Leisure Booths and Tables Available
- Pleasing Decor
- Soft Background Music

**DUTCH TREAT**  
"Conveniently Located"  
A&M East Gate Hwy. 6



### GOLF GREATS

Bobby Nichols, above, and Billy Martindale will tee off in two foursomes at the A&M Golf Course at 10 a. m. Monday. The two golf greats will be playing an exhibition match to establish a score which entries in A&M's 1966 International Golf Tournament will attempt to beat.

# SHOP EASY

# SAVE EASY

at



**TISSUE** White Cloud Bathroom 2 Roll Pack 25<sup>c</sup>

LUSTRE CREME **HAIR SPRAY** Giant 13-Oz. Can 49<sup>c</sup>

**JELLY** Kraft's Grape or Apple Mix or Match 3 18-Oz. Jar \$1.00

Folger's With \$2.50 Purchase or More **COFFEE** Mountain Grown Pound Can 49<sup>c</sup>

IMPERIAL, PURE CANE With \$2.50 Purchase or More **SUGAR** 5 LBS 39<sup>c</sup>



BOSTON BUTT, PORK **ROAST** lb 49<sup>c</sup>

Nice, Lean Pork **STEAK** lb 59<sup>c</sup>

Center Cut **PORK CHOPS** lb 79<sup>c</sup>

First Cut **PORK CHOPS** lb 59<sup>c</sup>

Baby Beef, Round **STEAK** lb 79<sup>c</sup>

U.S.D.A., Chuck Roast or **STEAK** lb 59<sup>c</sup>

Kraft's, Cream **CHEESE** 8-Oz. Pkg. 31<sup>c</sup>

BIG-TEX THIN SLICED **BACON** lb. 69<sup>c</sup>

**Farm-Fresh PRODUCE**  
GOLDEN RIPE **BANANAS** 2 LBS 25<sup>c</sup>  
New Crop, Texas Yellow **ONIONS** lb. 10<sup>c</sup>  
California, Sunkist **LEMONS** Doz. 29<sup>c</sup>  
Extra Fancy, Winesap **APPLES** lb. 19<sup>c</sup>  
Fresh, Slicer **CUCUMBERS** lb. 15<sup>c</sup>

BROOKSHIRE'S **EGGS** Grade "A" Large Doz. 43<sup>c</sup>

THIS COUPON WORTH 50 **FREE Top Value Stamps**  
With Purchase of 27-Oz. Can O'Cedar Squeeze Mop  
Coupon Expires April 30, 1966



## Gift Shop

Memorial Student Center

# SALE

Gifts For

## Mother's Day

May 8

1/3 Off Selected Items

Sale Runs Thru May 7