

A GIANT OF A BUDDY
Donny Ayres is dwarfed by his Texas A&M roommate, giant Randy Matson of world record shot put fame. Both athletes major in business administration and are from Pampa.

Randy's Roommate Does Not Mind Being Dwarfed

A 6-foot-1, 195 pound Texas A&M junior is dwarfed by his best buddy "The friendly Aggie giant," but Don Wayne Ayres doesn't mind.

Donny's roommate is Randy Matson, world champion shot-putter, National Collegiate Athletic Association record holder in the shot and discus and a key figure in A&M's basketball team.

Ayres has known Matson since they were juniors at Pampa High School. Matson causes daily fluctuations in their campus lives, but it hasn't hurt Ayres or Matson's grades.

The 21-year-old Ayres throws the javelin on the Aggie track team, keeps shot charts for

A&M's basketball team and is rated a Distinguished Student.

"Donny was one of the main reasons in Randy coming to A&M," declared A&M track coach Charley Thomas. "We found out Don was coming and that he was a good friend of Randy's. He helped a great deal."

Thomas measures Ayres as an outstanding athlete.

"He has good athletic ability, playing football and basketball at Pampa. Donny does an excellent job with the javelin and can jump six feet. He might make us a pole vaulter this season," Thomas went on.

Ayres is studying finance and Matson majors in marketing. Donny noted he and the five-inch taller, 50 pounds heavier Matson attended the same classes as freshmen. Randy lost academic ground to Donny when he dropped out of school a semester to participate in the Olympics.

Donny plans to do advance degree work in finance and go into banking.

"If one of us starts studying, the other feels guilty and does too," the finance major remarked.

Matson gets lots of telephone calls a week, primarily from reporters and writers wanting to write stories about him. The Athletic Department sets up interviews to prevent heavy loads on his time.

"Randy is very serious in his studies and passes up speaking to keep up his grades," Ayres noted.

May 8, 1965, when Matson sailed the shot put 70 feet, seven and one-fourth inches to set a world record and looped the discus to a point 199 feet, 7 1/2 inches to set an NCAA mark was like any other day, Randy's roommate said.

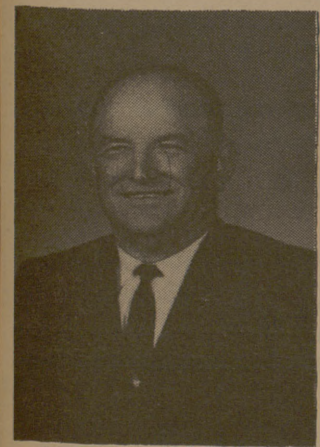
"The day of a meet is just another day to him. Randy has no special routines nor does he eat special foods for such," Ayres explained. "I'm glad to see him play basketball. He says it helps the spring in his legs and his quickness."

A native Texan, Donny moved to Pampa from Franklin, La., for his junior year of high school. Meeting Randy Matson has kept Donny on the move since.

1966 A&M Baseball Schedule

- March 10, University of Houston, At College Station
- March 12, T.C.U., At Fort Worth
- March 15, S.M.U., At College Station
- March 17, St. Edwards University, At College Station
- March 19, Rice University, At Houston
- March 22, Baylor University, At Waco
- March 23, University of Minnesota, At College Station
- March 24, University of Minnesota, At College Station
- March 26, Texas University, At College Station
- March 30, Rice University, At College Station
- March 31, Rice University, At College Station
- April 7, St. Mary's University, At San Antonio
- April 12, University of Houston, At Houston
- April 15, S.M.U., At Dallas
- April 16, S.M.U., At Dallas
- April 22, T.C.U., At College Station
- April 23, T.C.U., At College Station
- April 29, Baylor University, At College Station
- April 30, Baylor University, At College Station
- May 9, Texas, At Austin
- May 10, Texas, At Austin

Capable, Qualified and Experienced



Vote For
I. N. KELLEY
For
COUNTY CLERK
Brazos County

Subject to action of Democratic Primary May 7, 1966

Paid Pol. Ad.

PIGGY WIGGLY'S FABULOUS

Bonnie Baker BONANZA

SPECIAL VALUES ON PIGGY WIGGLY'S OWN BONNIE BAKER BRAND OF FINEST QUALITY MERCHANDISE.

* PRICES EFFECTIVE THUR-FRI-SATURDAY-MARCH 10-11-12

WE GIVE **5¢ S&S RED STAMPS** **DOUBLE** EVERY TUESDAY WITH \$1.50 OR MORE PURCHASE

PIGGY WIGGLY'S OWN BONNIE BAKER
BISCUITS 10ct. CANS Limit (6) **5c**

PIGGY WIGGLY'S OWN BONNIE BAKER
EVAPORATED MILK 8 TALL CANS Limit (8) **1.00**

PIGGY WIGGLY'S OWN BONNIE BAKER
White CORN MEAL 5 LB. **29c**

PIGGY WIGGLY'S OWN BONNIE BAKER
SALT 3 16oz. ROUND BOXES **25c**

Piggly Wiggly, Our own Lady Alice Liquid
DETERGENT 22 Oz. Bottle **39c**

* SOUTH TEXAS MOST MODERN SUPERMARKET
* SERVICE AND SATISFACTION GUARANTEED
* ADDRESS: TEXAS AVENUE AT ROSEMARY
* WE RESERVE THE RIGHT TO LIMIT QUANTITIES

BONNIE BAKER Limit 1 With \$2.50 Purchase
FLOUR 5 LB. BAG **29c**

RED McCLURE U.S. No. 1 POTATOES 10 LB. BAG **39c**

Texas #1 RUBY RED GRAPEFRUIT 2 LB. **19c**

CALIFORNIA PASCAL CELERY 1/2 GEE. STALK **19c**

WASHINGTON EXTRA FANCY Winesap APPLES 1 LB. **19c**

Imperial—Pure Cane
Limit One With \$2.50 Purchase
SUGAR 5 Bag Lb. **39c**

BLEACH (LIMIT 1 PLEASE)
PIREX 1/2 GAL. **29c**

SWIFT'S PREMIUM **BACON** 1/2 GAL. **79c**

FRANKS 1/2 Doz. **39c**

'NEW DETERGENT DISCOVERY'
BOLD 6T. BOX LIMIT 1 WITH COUPON RECEIVED IN MAIL **49c**

LIQUID JOY 6T. BTL WITH COUPON RECEIVED IN MAIL **58c**

(BOLOGNA-PICILE-FPAMENTO-OLIVE LOAF-SOUSE)
ARMOUR'S VAC-PAK **LUNCH MEATS** 4 6oz. PKGS. **99c**

Decker's, All Meat **FRANKS** 1/2 Doz. **39c**

USDA. INSPECTED HEART O' TEXAS **FRYERS** 1/2 LB. **33c**

USDA. INSPECTED **FRYERS** 1/2 LB. CUT-UP **35c**

FRYER QUARTERS **BREAST CUT** 1/2 LB. **39c**

FRYER QUARTERS **LEG CUT** 1/2 LB. **35c**

WINGS 29c/lb

Split **FRYERS** 35c/lb

ALL WHITE MEAT **BREASTS** 1/2 LB. **59c**

LEAN & MEATY **THIGHS** 1/2 LB. **49c**

CHILDREN'S DELIGHT **DRUMSTICKS** 1/2 LB. **49c**

ECONOMICAL **BAGS & NECKS** 1/2 LB. **59c**

FRYER **LIVERS** 1/2 LB. **59c**

FRYER **GIZZARDS** 1/2 LB. **49c**

FREE 100 EXTRA S&S RED STAMPS
With Purchase \$10.00 or More
Limit One—Expires 3-12-66

Store Hours
8 A.M. — 8 P.M.