

A Must Game For A&M Ags Vs. Rice Tonight

By GERALD GARCIA
Every conference game the Texas Aggies have played this year has been important, but tonight's meeting with lowly Rice could be the most crucial one.

Coach Shelby Metcalf's pack must win to stay in contention in the Southwest Conference

and a win over the Owls will put pressure on the SMU Mustangs, currently occupying first place with the Aggies and who will play the University of Texas in Austin Saturday on regional television.

The Rice-A&M contest will be staged in G. Rollie White Col-

iseum starting at 8 p.m.

A&M has faltered in three of its last four outings, blowing a three-game lead in 11 days. The most recent Aggie loss was Tuesday in Dallas when the Mustangs gained a share of the league leadership by blasting the Aggies, 82-65.

A look at the Aggie schedule shows they have the advantage to take all the conference marbles. The Aggies, besides hosting Rice tonight, will take on Baylor Tuesday night, in G. Rollie and the Arkansas Razorbacks in Fayetteville March 3.

In the meantime, SMU will be meeting two of the teams that handed them defeats earlier in the campaign. Besides the Longhorns in Austin Saturday, SMU will encounter TCU, who dealt them a loss, in Fort Worth Monday and Texas Tech, who blasted the Ponies in Lubbock earlier in the year, in Dallas the same night

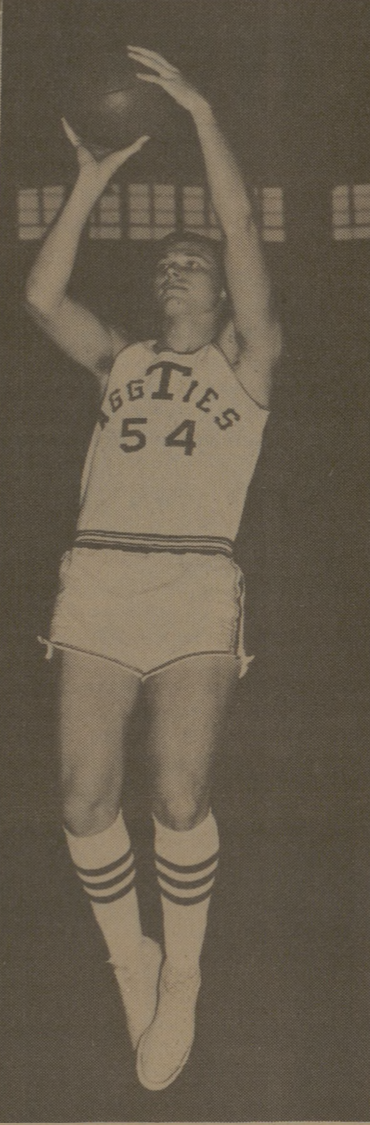
the Aggies versus Arkansas.

Rice, whose one-game winning streak was broken by Texas Tuesday night, has suffered through one of their most disappointing seasons. Before they defeated Baylor, the Owls were on a 28-game losing string.

Doug McKendrick, who was the conference's third leading scorer last season, paces the Owls. He led the conference in field goal percentage last season with a 64.5 clip, and this season he is one of the nation's leading free shooters.

A&M will counter Rice's attack with the likes of Randy Matson and John Beasley. Matson has put together four outstanding ball games.

He has hit in double figures in the last four games and his rebounding has been outstanding. During A&M's skid, Matson has been the Aggies' most consistent player.



TIM TIMMERMAN... top Aggie reserve.

Braves Battle Court, Start Field Training

By Associated Press
Milwaukee and the Braves go to bat Monday in their big court case but the ball club is gathering at West Palm Beach, Fla., getting ready to open the season in Atlanta.

In fact, the Braves expect to play in Atlanta before the regular National League season opens. The exhibition schedule shows that Bobby Bragan's men will break away from their Florida camp for a weekend series with the Los Angeles Dodgers in Atlanta, March 26-27.

The Braves also are scheduled to play the New York Yankees in Atlanta, April 8-9-10, the weekend before the regular season opens.

Although the big league baseball clubs have cut down on their spring cruises since Cuba became an unfriendly nation, they will poke into Mexico and Puerto Rico during the exhibition season.

The Cleveland Indians will slip away from their Tucson, Ariz., base for games with the Mexico City Reds and Tigers and an All-Star Mexican team, March 8-9-10. The March 8 game officially opens the exhibition season.

Two of the 20 clubs moved to new training bases this year. The Red Sox left Arizona and shuffled east to Winter Haven, Fla. on the fringe of Florida's West Coast colony. The Chicago Cubs also deserted Arizona and chose Long Beach, Calif., as a new base.

These moves left only Cleveland and San Francisco in Arizona and the Cubs and California Angels in California. The remaining 16 are in Florida.

As a result of the shortage of teams, the Cubs and Angels will play 12 times and the Indians and Giants will meet eight or nine times. The world champion Dodgers, who train at Vero Beach, Fla., will head west in early April and will stop off in Arizona for a few days before finishing at home with the Indians, April 9-10.

The Astrohome in Houston, which stirred up so much excitement a year ago, again will be the scene of several pre-season games.

A MAKE UP SCHEDULE FOR CIVILIAN SOPHOMORES & JUNIORS TO HAVE THEIR PORTRAITS MADE FOR THE AGGIELAND '66 WILL BE CONDUCTED THIS WEEK UNTIL THE 25th.

CIVILIANS

All civilian dormitories wish to have their pictures in the 1966 Aggieldand should go by the Student Publications Office and schedule the group pictures before March 1. If any pictures have dorm president pictures, snap shots or sweetheart pictures, they should turn them in to the Student Publications Office, YMCA basement.

1966 AGGIELAND PICTURE SCHEDULE

All Pictures To Be Taken At The University Studio

Co-eds

Any co-ed who wishes to have her picture in the Aggieldand should have it taken at her earliest convenience.

Who's Who

Students who were named to Who's Who should make individual appointments with the University Studio for their Aggieldand pictures as soon as possible.

Charles E. Thomas
'64
College Master Representative
Fidelity Union Life
846-8228

Mink Art Supply
Picture Frames
923 So. Colloge Ave. Bryan, Texas

HUMPTY DUMPTY CHILDREN CENTER
Our New Facility Now Open Monday Through Saturday.

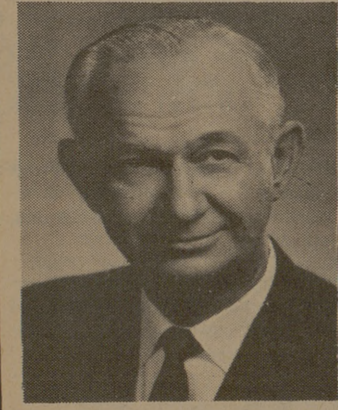
NIGHTS BY APPOINTMENT.
Bryan-C.S. Oldest State Licensed Child Care Center
823-8626 3406 So. Colloge
Mrs. Larry Jones Registered Nurse

FRANK J. BORISKIE Candidate For COUNTY CLERK BRAZOS COUNTY

I Will Sincerely Appreciate Your Vote and Support.

Subject to action of the Democratic Primary May 7, 1966

Ed. Pol. Adv.



The Church.. For a Fuller Life.. For You..

CALENDAR OF CHURCH SERVICES

ST. THOMAS EPISCOPAL 906 Jersey Street, So. Side of Campus Rector: William R. Oxley 8:00 A.M. - Sunday School 9:15 & 11:00 A.M. - Sun. Service 6:45 A.M. & 10:00 A.M. - Wednesday Holy Communion 7:15 P.M. - Wed. Evening Prayer	CHURCH OF THE NAZARENE 9:45 A.M. - Sunday School 10:45 A.M. - Morning Worship 6:30 P.M. - Young People's Service 7:00 P.M. - Preaching Service CHRISTIAN SCIENCE SOCIETY 9:30 A.M. - Sunday School 11:00 A.M. - Sunday Service 11:00 A.M. - 2 P.M. - Tues. Reading Rm. 7:00-8:00 P.M. - Wed., Reading Rm. 8:00 P.M. - Wed. Evening Worship	ST. MARY'S CATHOLIC Sunday Masses—7:30, 9:00 and 11:00 FAITH CHURCH 9:15 A.M.—Sunday School 10:30 A.M.—Morning Worship 7:30 P.M.—Evening Service COLLEGE HEIGHTS ASSEMBLY OF GOD 9:45 A.M.—Sunday School 11:00 A.M.—Morning Worship 6:30 P.M.—Young People's Service 7:30 P.M.—Evening Worship
FIRST BAPTIST 9:30 A.M.—Sunday School 8:10 P.M.—Training Union 7:20 P.M.—Evening Worship 6:30 P.M.—Choir Practice & Teachers' meetings (Wednesday) 7:30 P.M.—Midweek Services (Wed.)	UNIVERSITY LUTHERAN (Missouri Synod) 10:00 A.M.—Bible Class 11:00 A.M.—Morning Worship 7:30 P.M.—Wednesday Vesper UNITARIAN FELLOWSHIP 305 Old Hwy. 6 S. 10:00 A.M.—Sunday School 8:00 P.M.—First Four Sundays of each month—Fellowship Meeting.	A&M METHODIST 8:30 A.M.—Morning Worship 9:45 A.M.—Sunday School 10:55 A.M.—Morning Worship 6:30 P.M.—Campus & Career Class 6:30 & 8:00 P.M.—MYF Meetings CHURCH OF JESUS CHRIST OF LATTER DAY SAINTS 26th East and Couiter, Bryan 8:30 A.M.—Priesthood meeting 10:00 A.M.—Sunday School 6:30 P.M.—Sacrament Meeting
A&M CHURCH OF CHRIST 8:00 & 10:00 A.M. Worship 9:00 A.M.—Bible Study 5:15 P.M.—Young People's Class 6:00 P.M.—Worship 7:15 P.M.—Aggie Class 9:30 A.M.—Tues. - Ladies Bible Study 7:15 P.M.—Wednesday - Bible Study A&M PRESBYTERIAN 9:45 A.M.—Sun. Breakfast - Stu. Ctr. 9:45 A.M.—Church School 11:00 A.M.—Morning Worship 6:00 P.M.—Sun. Single Stu. Fellowship 7:15 P.M.—Wed. Student Fellowship 6:45 A.M.—Fri. Communion Service Wesley Foundation	OUR SAVIOUR'S LUTHERAN 8:15 & 10:45 A.M.—The Church at Worship 9:30 A.M.—Bible Classes For All Holy Communion—1st Sun. Ea. Mo.	FIRST CHRISTIAN CHURCH Homestead & Ennis 9:45 A.M.—Sunday School 10:30 A.M.—Morning Worship 6:30 P.M.—Young People

Hillier Funeral Home
BRYAN, TEXAS
502 West 26th St.
PHONE TA 2-1572

Campus and Circle Theatres
College Station
College Station's Own Banking Service
University National Bank
NORTH GATE

Sure Sign of Flavor
ICE CREAM
SANITARY Farm Dairies

Central Texas Hardware Co.
BRYAN
● HARDWARE
● CHINAWARE
● CRYSTAL
● GIFTS

Ag Swimmers To Compete Against OSU
The Texas A&M Swimming Team will host Oklahoma State University at 7:30 p.m. tonight in P. L. Downs Natatorium.
After tonight's engagement, the Aggie swimmers will face the varsity swimmers from Texas Tech at 3 p.m. Saturday. This meet will also take place in P. L. Downs Natatorium.
After two successive meets, the swimming team will take a day off and then start right in again. This time the swimmers will test a team from Eastern New Mexico State University. The meet will be at 7:30 p.m. Monday.
Coach Arthur D. Adamson's team currently holds a 2-3 record. Of the present 11 members of the varsity team, Roger Tyrne, Jim Hooten, Jerry Keating and Mike Oofner are returning lettermen. The other members of the squad include Bob Climie, Tom Holder, Jerry Patterson, David Trifon and divers, Jim Sedberry and Herbert Cook.
Adamson said he expected the Texas Tech freshmen to make the trip with their varsity team to take on the Fish swimmers. He added that he had not received further notice concerning the tentative meet between the freshmen teams.

CORRECTION!
WINN'S AD
Thursday, Feb. 24
Should Have Read
BOLOGNA Sliced . . lb 49¢

"Luxury for Less"
RAMADA INN
Sunday Buffet
Your full choice of our complete buffet, consisting of 75 to 80 choice selected items each Sunday.
ADULTS — \$2.25
CHILDREN — \$1.25
Alternating Foreign Specialty Table Each Week
Bryan - Colloge Station
846-8811
"Luxury for Less"
RAMADA INN

ENGINEERING OPPORTUNITIES
for Seniors and Graduates in
MECHANICAL, AERONAUTICAL, CHEMICAL, ELECTRICAL, and METALLURGICAL ENGINEERING
ENGINEERING MECHANICS
APPLIED MATHEMATICS
PHYSICS and ENGINEERING PHYSICS
CAMPUS INTERVIEWS
TUES. MAR. 1
Appointments should be made in advance through your College Placement Office
Pratt & Whitney Aircraft
DIVISION OF UNITED AIRCRAFT CORP.
An Equal Opportunity Employer, M & F
SPECIALISTS IN POWER... POWER FOR PROPULSION—POWER FOR AUXILIARY SYSTEMS.
CURRENT UTILIZATIONS INCLUDE AIRCRAFT, MISSILES, SPACE VEHICLES, MARINE AND INDUSTRIAL APPLICATIONS.



...and FORGIVENESS

Sin is a disagreeable word that millions shun. It casts a shadow of separation. It raises chill thoughts of an impenetrable and eternal barrier between humanity and God...

Forgiveness on the other hand is a warm and inspiring word. It promises that life's slate can be wiped clean. It brings us close to God — and to one another.

An Execution on a Friday centuries ago... an Empty Tomb in the dawn of the first Easter Day... a Faith that has gripped human souls for all the generations since — these are forever entwined with the stark realization of man's sin and the blessed assurance of God's forgiveness.

That is why, when we think deeply of the meaning of these words — of their implication in our own lives — we find ourselves at the very heart of the Christian religion.

And it is why these soul-stirring weeks at the threshold of Christ's suffering have long been the time for such searching thought!

Copyright 1966 Keister Advertising Service, Inc., Strasburg, Va.

THE CHURCH FOR ALL ALL FOR THE CHURCH

The Church is the greatest factor on earth for the building of character and good citizenship. It is a storehouse of spiritual values. Without a strong Church, neither democracy nor civilization can survive. There are four sound reasons why every person should attend services regularly and support the Church. They are: (1) For his own sake. (2) For his children's sake. (3) For the sake of his community and nation. (4) For the sake of the Church itself, which needs his moral and material support. Plan to go to church regularly and read your Bible daily.

Day	Book	Chapter	Verses
Sunday	Isaiah	1	12-20
Monday	Isaiah	59	1-8
Tuesday	Ezekiel	14	6-11
Wednesday	John	15	1-11
Thursday	Acts	13	34-41
Friday	II Thessalonians	1	5-12
Saturday	Hebrews	10	11-25



The Exchange Store
"Serving Texas Aggies"

Bryan Building & Loan Association
BRYAN

Lilly
ICE CREAM AND MILK