

NCAA Names At-Large Teams; SWC Gets Bye

KANSAS CITY (AP) — The National Collegiate Athletic Association announced first round pairings for the National Basketball Championships Wednesday, but Ivy League participation remained a contingency.

NCAA officials said the Ivy League would be allowed to participate, provided its member schools accept the NCAA's 1.6 minimum grade standard for athletes.

The Ivy League schools had expressed opposition to the 1.6 level. They said no outside agency, such as the NCAA, should determine academic standards for a school. The 1.6 scholastic average is based on a scale in which 4.0 is the highest possible score.

Two conferences, the Southwest and Western Athletic, drew byes in the March 7-8 first-round pairings. As a result, the Western Athletic first round site was eliminated, with its representative going to the West regional semifinals at UCLA March 11.

Because of the two byes and the elimination, a doubleheader of four at-large teams will be played at Wichita State March 7.

Regional semifinals and finals will take place March 11-12, with the national semifinals and finals being played at the University of Maryland, College Park, March 18-19.

First round sites are at Virginia Polytechnic Institute, Blacksburg, Va.; the Palestra, Philadelphia; Kent State, Kent, Ohio; and Wichita State, Wichita, Kan.

The regional semifinals and finals will be played at North Carolina State, Raleigh; University of Iowa, Iowa City; Texas Tech, Lubbock, and UCLA, Los Angeles.

At-large teams were named Wednesday. They were unbeaten Texas Western, with a 20-0 record; Colorado State University, 12-6; Loyola of Chicago, 20-2; Providence, 21-4; Dayton, 18-4; Houston, 19-4, and Oklahoma City, 21-4.

Texas Western, ranked third in The Associated Press poll, plays Oklahoma City in a first round game at Wichita March 7. The winner will be one of the four participants in the March 11 regional semifinal and will meet the Missouri Valley Conference champion.

The other game will match the Southwest and Big Eight Conference titlists.

An at-large team will replace the Ivy League entry if its data does not meet the 1.6 requirements.

The maximum bracket of the tournament is 25 teams, 15 of which will be conference champions.

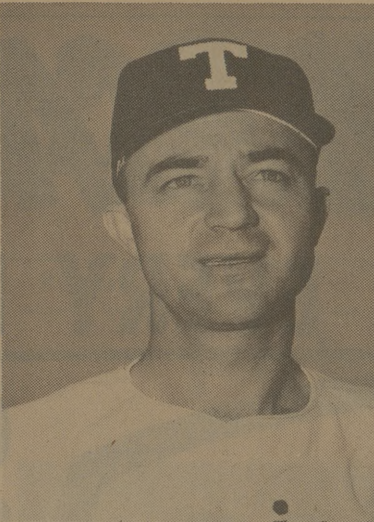
The first-round pairings:

East regionals: At VPI, March 8, Middle Atlantic state champion vs. Providence; at the Palestra, March 7, Southern Conference vs. Yankee Conference. The Ivy League will play Syracuse at the Palestra March 7, or at VPI March 8, if Pennsylvania wins the Ivy League championships.

Midwest regionals: At Kent State, March 7, Mid-American Conference vs. Dayton; and Ohio Valley Conference vs. Loyola of Chicago.

West regionals: At Wichita State, March 7, Colorado State University vs. Houston; Western Athletic Conference draws bye.

Champions of the Atlantic Coast Conference, the Southeastern Conference, the Big Ten, the Missouri Valley, Big Eight, Athletic Association of Western Universities and the West Coast Conference also skip first round competition. They play in the regional semifinals.



AGGIE BASEBALL COACH
Tom Chandler will pilot the Aggie baseball team for the eighth year this season. Chandler and his base-batters will open the season Friday in San Antonio against Fort Sam Houston, but inclement weather might force postponement of the game. The Aggies will also play Trinity University in San Antonio Saturday. They will play their home opener Wednesday against St. Mary's of San Antonio.

Keglers Capture First Place Title

First place went to A&M's bowling team in the recent regional Association of College Unions Games Tournament in Baton Rouge, La.

The five-man team dropped 960 pins to shade the Texas Longhorns by 40. Individually, the Aggies' John Taylor finished third with a 198 average for nine games.

Team members Taylor, Richard Rasmussen, Bob Brandt, Perry Kinder, and Fred White received individual plaques for their performance.

Kentucky Still Holds Top Spot

By The Associated Press
The streaking Kentucky Wildcats show no signs of slowing down and relinquishing their solid lead in the Associated Press major-college basket poll. They need to win only three more games to complete an unbeaten regular season.

- | | |
|-------------------|-----|
| 3. Texas Western | 305 |
| 4. Chicago Loyola | 264 |
| 5. Vanderbilt | 208 |
| 6. Kansas | 206 |
| 7. St. Joseph's | 126 |
| 8. Nebraska | 121 |
| 9. Providence | 70 |
| 10. Michigan | 65 |

Kentucky lifted its record to 22-0 Monday night by trouncing Mississippi 108-65. The Wildcats play Tennessee Saturday and March 5, and then Tulane in the season finale March 7.

In the latest poll based on games through last Saturday, Kentucky drew 38 first-place votes and 396 points. Fourth-ranked Chicago Loyola and seventh-ranked St. Joseph's of Pennsylvania were the only other teams named to the top position in the balloting by 40 regional experts.

Duke held second place and there was no change either in the next three positions as Texas Western, Chicago Loyola and Vanderbilt ranked third, fourth and fifth, respectively.

Providence's loss to Rhode Island dropped the Friars three notches to ninth and enabled three other teams to advance one position. Kansas climbed to sixth, St. Joseph's to seventh and Nebraska to eighth. Michigan remained in 10th place.

The standings are:

- | | |
|-------------|-----|
| 1. Kentucky | 396 |
| 2. Duke | 348 |

Battalion
Sports

THE BATTALION
Thursday, February 24, 1966 College Station, Texas Page 9

ROBERT HALSELL
TRAVEL SERVICE

NOW IN OUR NEW LOCATION
WEINGARTEN SHOPPING CENTER
(NEXT TO BIG BONUS)
Reservations and Tickets
Domestic and International
AIRLINES • STEAMSHIPS • TOURS
CRUISES • HOTELS • RENT CARS
1016 SOUTH COLLEGE AVENUE PHONE 822-3737

Verdict In On Alcindor—Astounding

LOS ANGELES (AP) — After 17 games of college freshman basketball, the verdict is in on 7-foot-1 Lew Alcindor and the decision is almost unanimous. He is astounding.

The high-rise center from New York City, coveted by a hundred colleges last year before he chose UCLA, has averaged 33.7 points and 21 rebounds in leading his team to 17 consecutive victories — most by margins of 50 or 75 points.

Opposing coaches describe him as a younger combination of Wilt Chamberlain and Bill Russell.

UCLA coaches shield him from newsmen and seem reluctant to comment on his exploits on the grounds that too much fanfare would be a disrupting influence on an 18-year-old.

But other experts look on in awe.

Varsity Coach Marv Harsham of rival Washington State told a reporter: "Unfortunately I saw the UCLA freshman play last night. What can you say? Alcindor is simply great. He can hold you off with one hand and put the ball in the basket with the other."

Former Boston Celtics' star Bill Sharman took a couple of looks and pronounced Alcindor ready for National Basketball Association play right now. Sharman says he could be worth \$100,000 a year.

His team's games have been almost entirely against junior college teams, made up of freshmen and sophomores, and the winning scores are invariably over 100 points.

In one game Lew made 21 field goals in 23 tries. In another it was 17 out of 20.

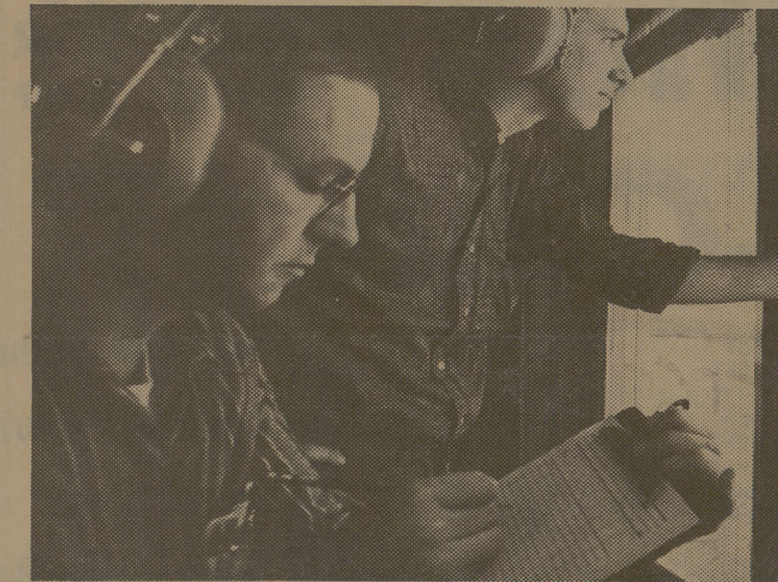
Ag Wrestlers Win Meet From SFA

The Texas Aggie wrestling team won its third intercollegiate meet by downing Stephen F. Austin, 28-19, in a recent match.

The Aggie team members are Jerry Saad, George Hollwedel, Danny Ruiz, Phillippe Bohn, Mike Waldrop, John Davis, Bruce Davis, Fred Lenzy, Chuck Witlock and Tommy Ward.

Coach Russell K. Wieder's Aggie wrestlers will host Southwestern Louisiana in G. Rollie White Coliseum at 2 p.m. Saturday. The meet will be held in the wrestling room on the second floor of the coliseum.

All interested students who wish to participate in wrestling are urged to register in the coliseum any afternoon between 5 and 6.



If nothing interests you as much as research and development...

consider the advantages of a career in the laboratories of the David Taylor Model Basin

The David Taylor Model Basin, one of the oldest government laboratories, has grown steadily in size and responsibility and is now concerned with design concepts for aircraft and missiles, as well as with surface ships and submarines. Its five major laboratories conduct basic, applied, and developmental research in these fields:

HYDRODYNAMICS—Hydrofoil craft, interface vehicles, novel ship types, fluid dynamics, high-speed phenomena.

AERODYNAMICS—Aircushion vehicles, weapon release problems, V/STOL aircraft, aircraft performance.

STRUCTURAL MECHANICS—Submarine and surface ship structures, effects of underwater and surface explosions, ship and personnel protection, deep-sea research vehicles.

APPLIED MATHEMATICS—Computer-aided ship and system design, automated data processing, numerical techniques, management data analysis.

ACOUSTICS AND VIBRATION—Radiated, near-field, self and hydrodynamic noise, countermeasures, silencing devices, noise transmission.

An engineering or scientific career at the David Taylor Model Basin offers you many advantages:

1. Because of the mission of the Model Basin, you can be sure that you will be engaged in research, development, test and evaluation not as a bystander, but as an active and increasingly important participant. Whatever your discipline, you will have the opportunity to apply it to one of the important projects in which the Model Basin is engaged.
2. You will have the satisfaction and excitement of working on projects that advance the state of the art and are of national and international importance.
3. Working with you will be men whose engineering and scientific achievements have earned them wide reputations in their fields. Your contact with them will be of immeasurable value in your own development as a professional engineer or scientist.
4. You will work in a campus-like environment with 186 acres of laboratories and supporting facilities with millions of dollars worth of equipment. For instance, the Hydromechanics Lab-

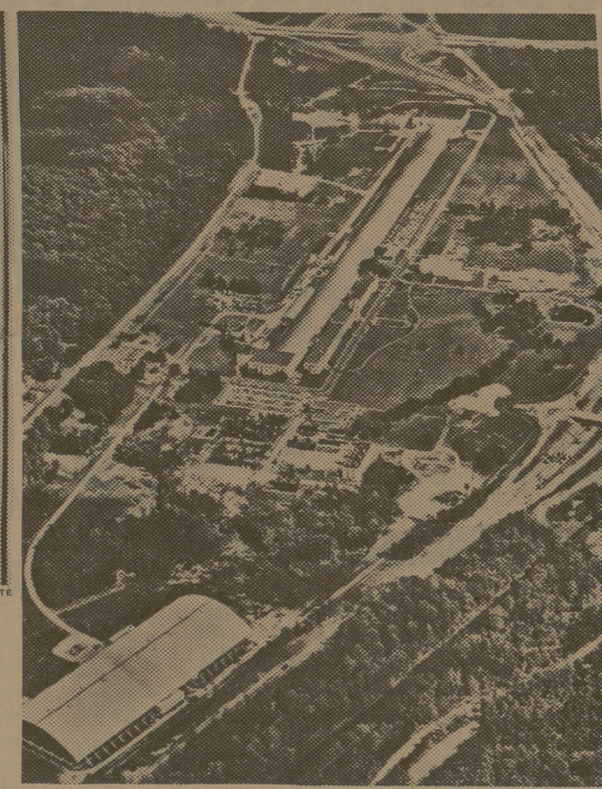
oratory has a Towing Basin 3/5 of a mile long, 50 feet wide, and 20 feet deep; a Maneuvering Basin that covers 5 acres. The Applied Mathematics Laboratory uses four high-speed digital computers to solve engineering and logistic problems. The ultra-high-speed UNIVAC LARC performs 250,000 computations per second. The Aerodynamics Laboratory is equipped with nine wind tunnels, subsonic, transonic, supersonic, hypersonic, for the testing of aircraft, missile and airborne component models. Ten pressure tanks, and tensile and compressive load testing machines are among the devices used by the Structural Mechanics Laboratory in research on hull structures for ships, deep-diving submarines and deep-sea research vehicles. Mechanical generators in the Acoustics and Vibration Laboratory can produce known forces in structures ranging from small items of machinery to complete ships.

5. The management of the Model Basin is interested in your professional development. It provides you with the opportunity to receive financial assistance and time (up to 8 hours a week) to attend classes at one of the six major universities in the immediate area, which offer courses in virtually every field. In addition, a number of graduate courses are conducted at the Model Basin. Under a new program, several employees are now engaged in full or 3/4-time advanced academic study and receiving full salary as well as all their expenses.

6. At the David Taylor Model Basin, you can reach the \$10,000 to \$12,000 level within four years. In addition, as a Civil Service employee, you get generous vacations and sick leave, inexpensive life and health insurance, and enjoy the benefits of an unusually liberal retirement program.

7. Within minutes of the Model Basin are the suburbs of Maryland and Virginia offering excellent living conditions, unusual recreational facilities, and some of the best public school systems in the country. Because the Washington area is a center for scientific research as well as for government, it boasts a large concentration of people of intellectual and cultural attainments. Washington, D. C. with its museums, art galleries, libraries and points of historical interest is just 12 miles from the Model Basin.

For more information about the David Taylor Model Basin and the opportunity it offers you, see the interviewer who visits your campus or write directly to Mr. S. DiMaria, Head, Office of Civilian Personnel.



The David Taylor Model Basin is looking for well-qualified college graduates with BS, MS or PhD degrees in aerospace, electrical, electronics, marine, mechanical, civil or structural engineering. Applied mechanics, mathematics, physics, and naval architecture.

On Campus Interviews

Representative from the David Taylor Model Basin will be available for interviews on

FRIDAY, FEB. 25

Contact Your College Placement Officer for an Appointment

JUST ARRIVED!

AT THE
WORLD OF BOOKS SHOPPE

Facts From Figures by M. J. Moroney
In Search of the Miraculous and The Strange Life of Ivan Osokin by P. D. Ouspensky
Man and the World of Stars by Rudolph Steiner
Strindberg—An Introduction to his life and work by Brita Mortensen and Brian Downs

207 S. Main 823-8366 Bryan

DAVID TAYLOR MODEL BASIN
Dept. 132Z • U.S. Department of the Navy • Washington, D.C. 20007 • An Equal Opportunity Employer