

TSA Gives Safety Tips To Drivers

Some safe driving tips from the Texas Safety Association: **KNOW AND OBSERVE DRIVING RULES**

Our state's highways are among the best in the nation. It can and should be a pleasure to drive on them, but the efforts of our state highway department to make traveling a pleasure are wasted if drivers disregard safe driving practices. If you're planning a trip for the holidays, make sure you know and observe all safe driving rules.

GET PARKED VEHICLE OFF THE ROADWAY

Not all accidents happen while vehicles are being driven. A parked or stalled vehicle on the roadway also may cause an accident. If you have car trouble on the road, get your automobile as far off the highway as possible. And, before leaving it for assistance, be sure to set the hand brake.

PROTECT YOUR DRIVER'S LICENSE

Your driving license gives you the privilege of driving a motor vehicle on streets and highways but only as long as you do so safely. If you break the traffic laws of the state or its cities, your driving license may be taken away. Drive by the rules. Protect your driving privilege and your LIFE!

LEAVE ALCOHOL AT HOME

Motorists and pedestrians are advised to leave alcoholic beverages at home during the holidays. In the pandemonium of holiday traffic, you need all your senses for driving or walking.

GET CAR WINTERIZED FOR HOLIDAY DRIVING

If you're planning a trip during the holidays, get your car "winterized" to avoid getting into trouble on the road. This includes putting tire chains in the trunk and having all winter safety features on your automobile in first class shape.

Bulletin Board

THURSDAY

Brazoria County Hometown Club will meet at 7:30 p.m. in Room 225 of the Academic Building.

San Angelo-West Texas Hometown Club will meet at 7:30 p.m. in the Memorial Student Center. Pictures will be made.

Deep East Texas Hometown Club will meet at 7:30 p.m. in Room 2-B of the MSC. Will select Sweetheart.

Bastrop County Hometown Club will meet at noon in Room 1-A of the MSC.

El Paso Hometown Club will meet at 7:30 p.m. in Room 2-A of the MSC.

Texasarkana Area Hometown Club will meet at 7:30 p.m. in Room 203 of the Academic Building.

San Antonio Hometown Club will meet at 7:30 p.m. in the Social Room of the MSC.

Bell County Hometown Club will meet at 7:15 p.m. in Room 305 of the Academic Building. Will discuss New Year's Dance.

Charles E. Thomas '64
College Master Representative
Fidelity Union Life
846-8228



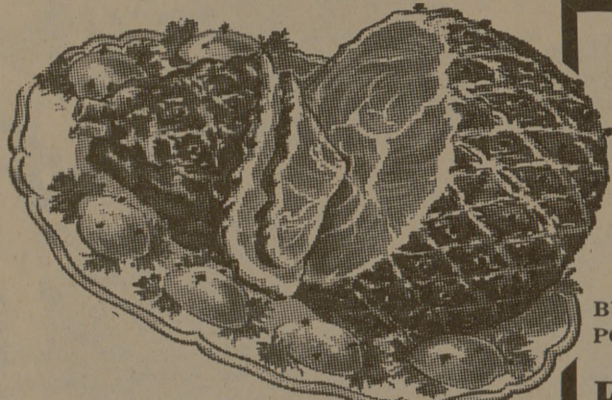
meeting of the don't minds

If you don't mind having all the details of planning a banquet or convention taken care of for you, call Ramada Inn. We'll make sure your meeting is trouble-free... no matter what size your group!

Try our fast, friendly breakfast and luncheon service.

"Luxury for Less"
RAMADA INN
Bryan-College Station
846-8811

SAVE MONEY ON OUR FOODS THAT SAY 'HAPPY HOLIDAYS'



Hickory Smoked — 5 to 7 Lbs. Avg.

HAMS 49^c

Shank Portion Lb.

BUTT PORTION Lb. 59^c CENTER PORTION Lb. 89^c CENTER SLICES Lb. 99^c

FULLY COOKED HAMS Half or Whole 12 to 16 Lbs. Avg. Lb. 69^c

Shurfrost — Frozen MEAT PIES 6 For \$1.00

Mohawk Brand — Canned PICNICS 3 Lb. Can \$2.29

Corn King — Sliced BACON 1-Lb. Pkg. 75^c

Armour Star U.S.D.A. Grade "A" Broadbreasted

TURKEYS

TOMS 18 to 24 Lbs. Avg. Lb. 35^c HENS 10 to 14 Lbs. Avg. Lb. 39^c

Swift's Premium — 5 to 7 Lbs. Avg. CHICKEN HENS Lb. 39^c

MAPLEAF DUCKLING

lb 49^c

BABY BEEF — RUMP ROAST - PIKES PEAK ROAST OR

ROUND STEAK lb 69^c

Cackleberry

EGGS Large Dozen 55^c

Evaporated

PET MILK 7 Tall Cans \$1.00

Imperial — POWDERED

SUGAR 2 1-Lb. Boxes 29^c

Heavy Duty - 18 Inch Wide — Reynold's

FOIL 25-Ft. Roll 59^c

Bleach

PUREX 1/2 Gallon 29^c

Del Monte — Fruit

COCKTAIL 4 300 Cans \$1.00

Del Monte — Cream Style or Whole Kernel

CORN 5 303 Cans \$1.00

Sugary Sam — SWEET

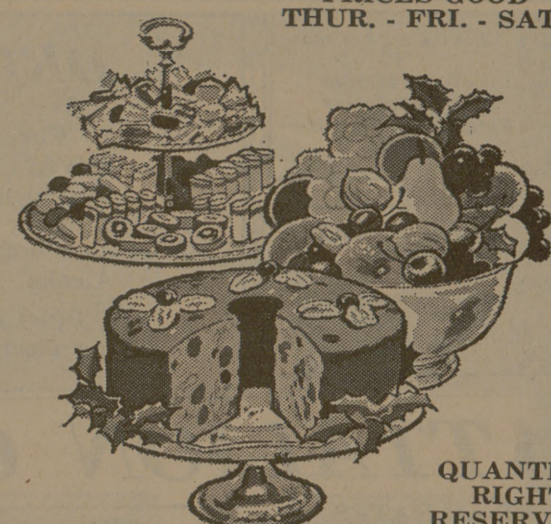
POTATOES 2 No. 2 1/2 Cans 49^c

Shurfine

ASPARAGUS 4 300 Cans \$1.00

Sylvania — Inside Frosted, 60 - 75 - 100 Watt

LIGHT BULBS 2 FOR 29^c



PRICES GOOD THUR. - FRI. - SAT.

QUANTITY RIGHTS RESERVED

GET EXTRA CHRISTMAS GIFTS WITH S&H GREEN STAMPS



AMERICA'S MOST VALUABLE STAMPS

Cream Cheese

Philadelphia Kraft's 8-Oz. Pkg. 29^c

CAKE MIXES

or Cake Frostings Shurfine 4 Reg. Boxes 1⁰⁰

Shurfine — Thrown Stuffed - Manzanilla

OLIVES 4 3-Oz. Jars \$1.00

Topping RICH WHIP 10-Oz. Can 45^c

Kraft's, Mellow Cracker Barrel CHEESE 10-Oz. Stick 49^c

WE GIVE S&H GREEN STAMPS

POTATOES

U. S. No. 1 RUSSET

10 Lb. Bag 39^c

Best in Bryan-ORR'S Super Markets



GOLD MEDAL FLOUR

5 Lb Bag 49^c

CRISCO OIL

5^c Off 24-Oz. Btl. 39^c

2 CONVENIENT LOCATIONS
Downtown 200 E 24 Street • Ridgecrest 3516 Texas Ave

California Navel ORANGES Lb. 15^c

King Of Salads AVOCADOS Each 19^c

Fresh Slicing TOMATOES Carton 19^c

Fresh, Crisp CARROTS 2 1-Lb. Cello Bags 15^c

MELLORINE 3 1/2 Gal. Ctns. \$1 | PECANS Ellis Shelled Halves Lb. Pkg. 89^c