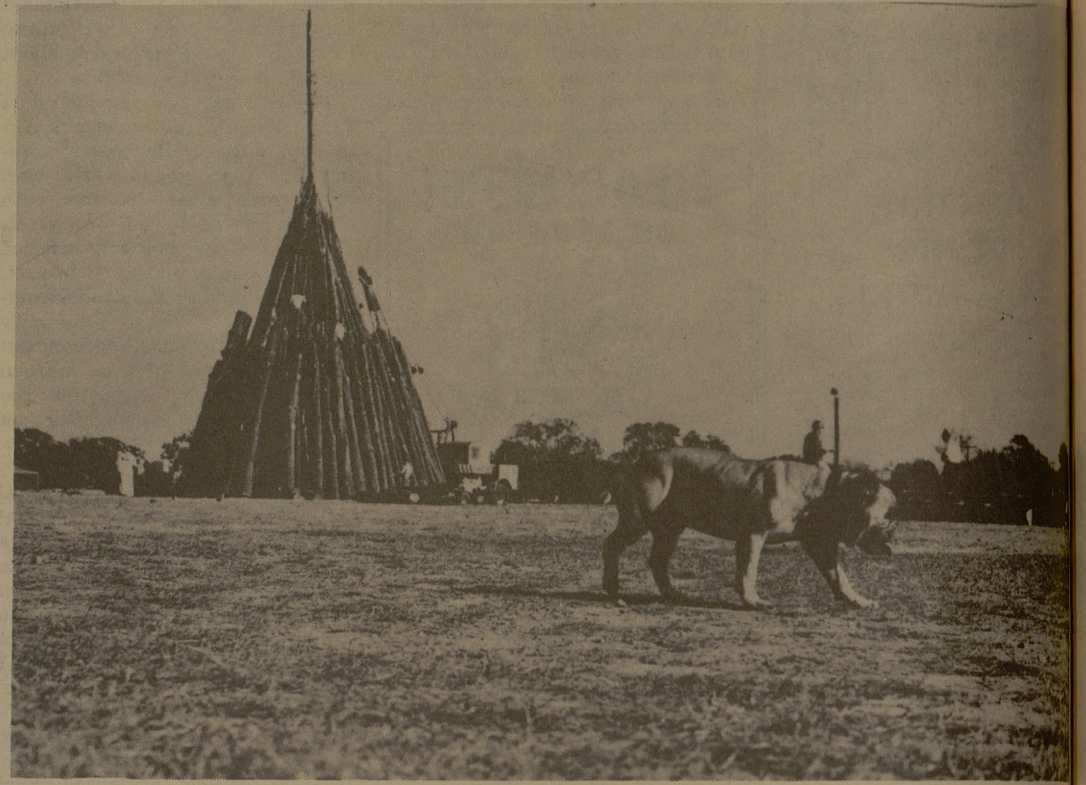
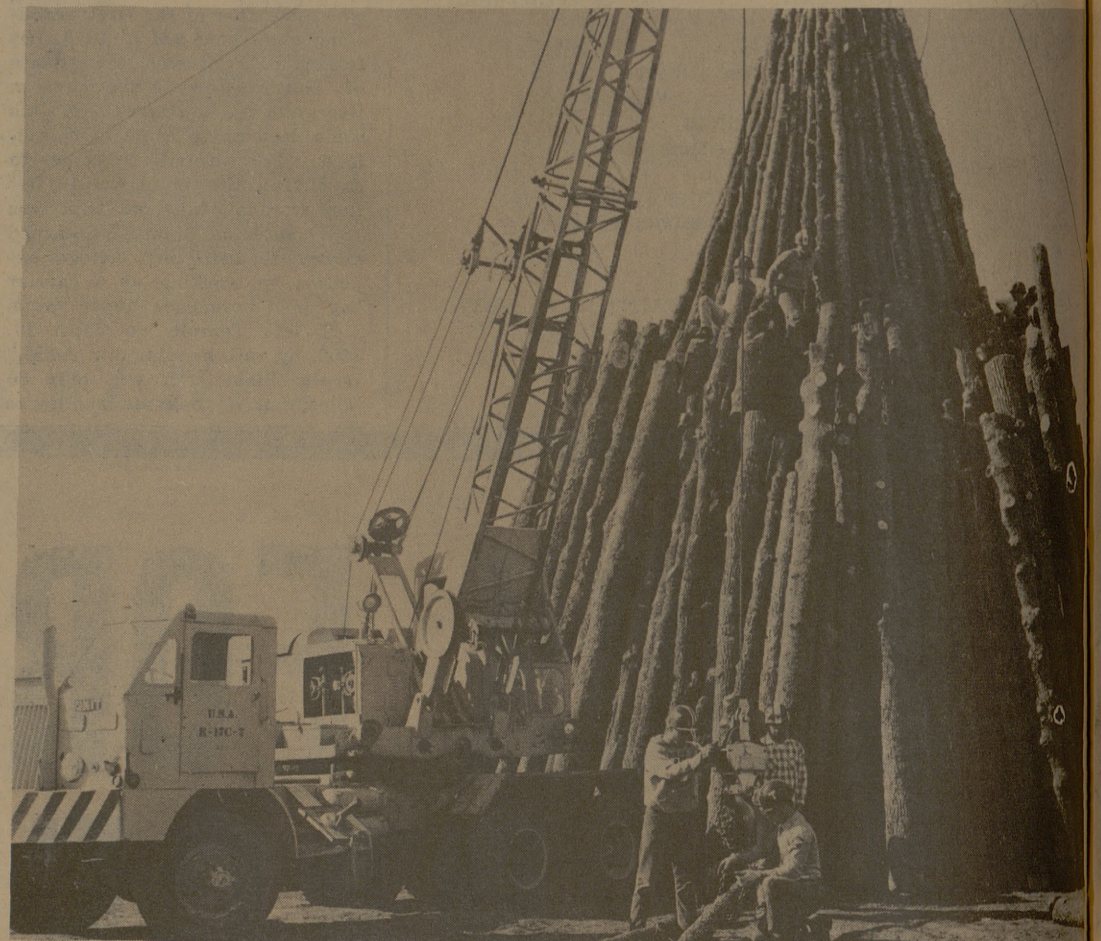


Teamwork, Horseplay, Effort...

BONFIRE 1965



CHECKING THE PROCEDURE
... Ranger patrols stacking area during afternoon stroll.



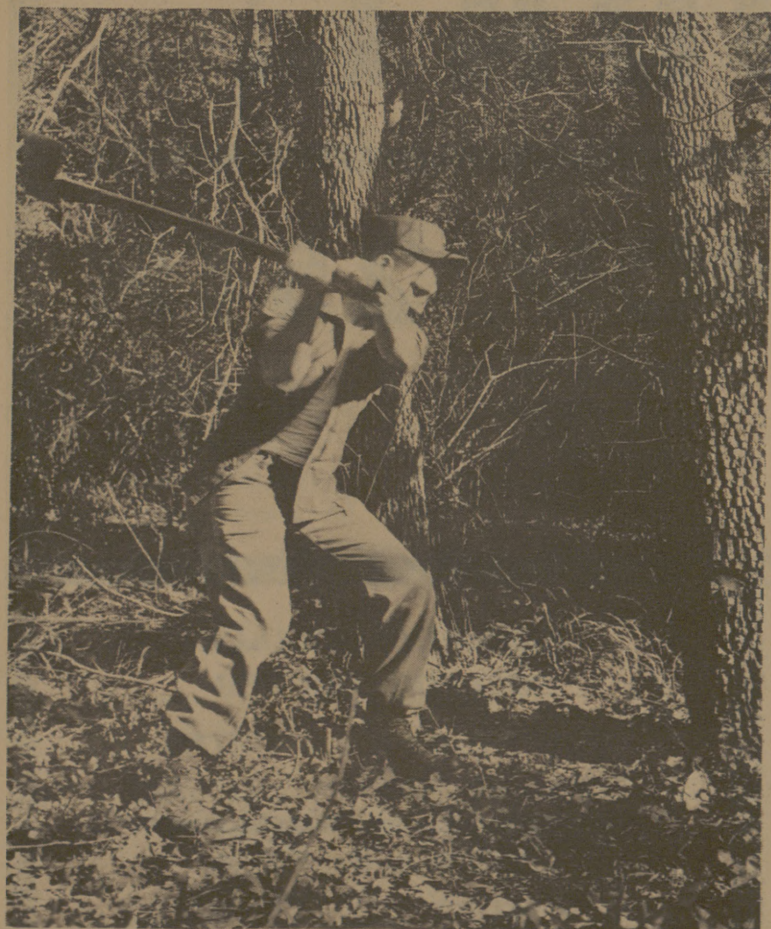
CRANE HELPFUL UNIT IN STACKING
... log is tied to rope so crane can lift big log to top of stack.



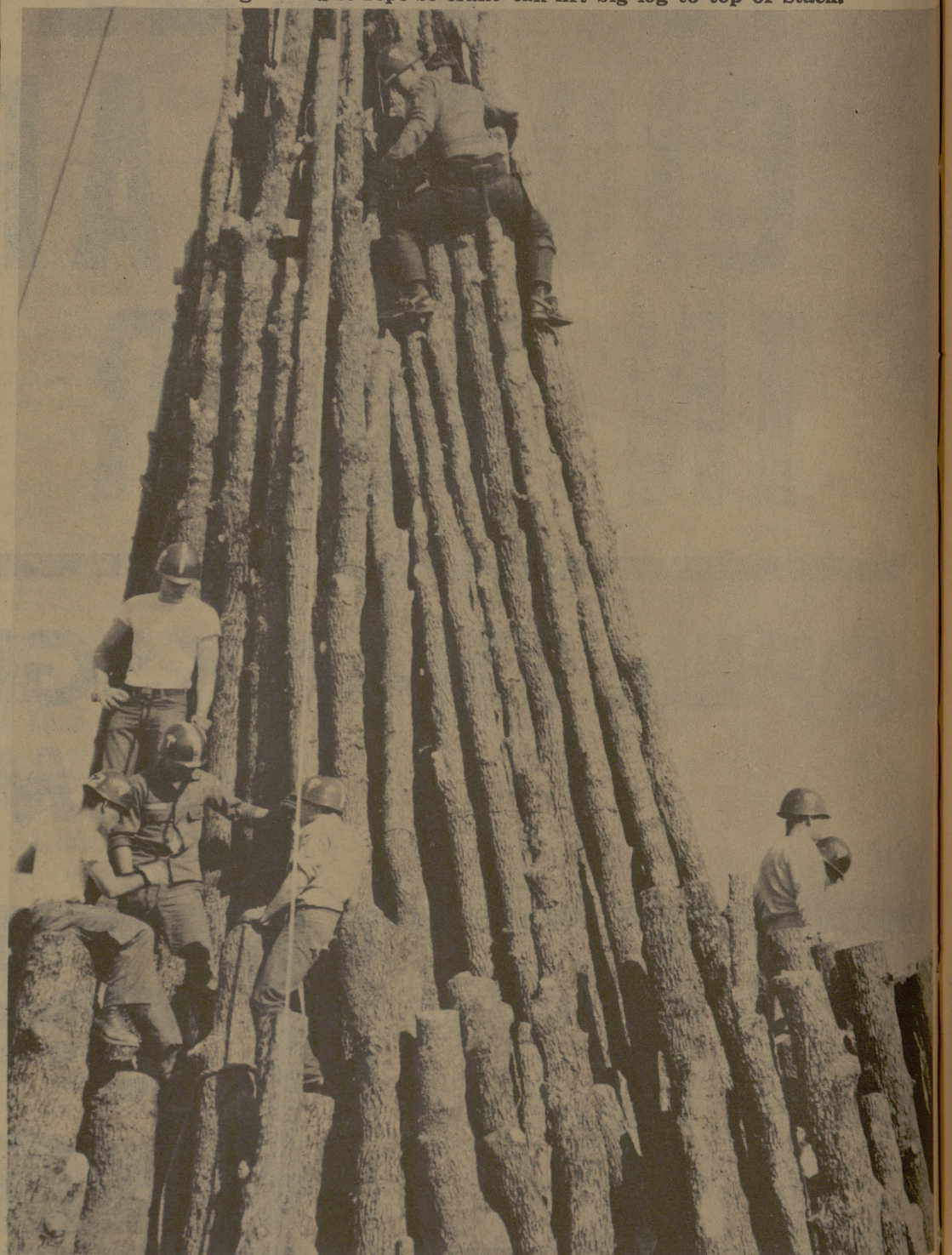
CENTER POLE GOES UP
... Spider D members put center pole in place.



TWO BEAUTIES AT STACKING AREA
... A&M coed Isabel Gramatges admires the pile as it goes up.



TWO METHODS OF CUTTING TREES
... Aggies use axes and power saws to bring down the big trees for the Bonfire.



STACK KEEPS GROWING