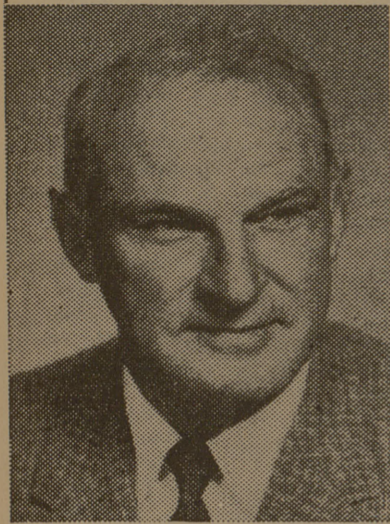
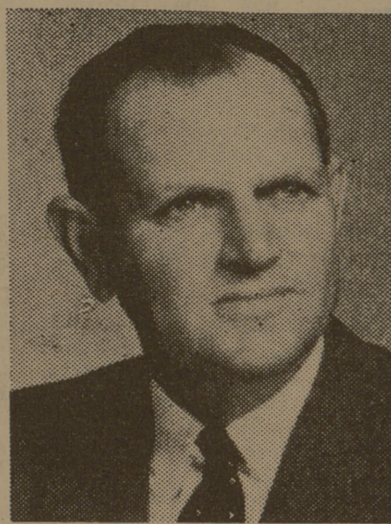


Southwest Conference Foes

SWC: Arkansas, Texas, et. al.



JESS NEELY
... few lettermen.



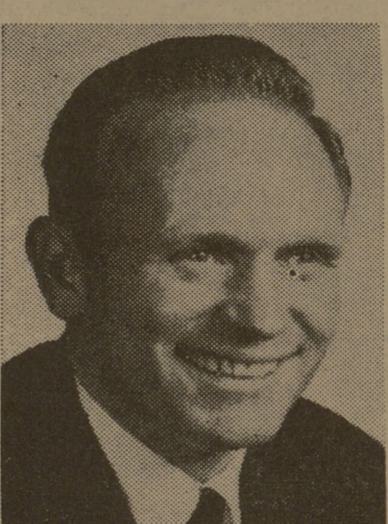
ABE MARTIN
... front-line sophs.



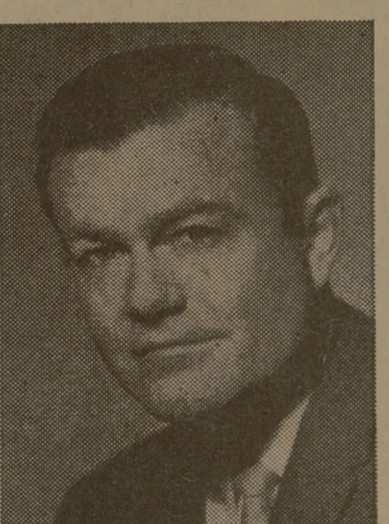
HAYDEN FRY
... speed to spare.



J. T. KING
... Donny's back.



JOHN BRIDGES
... passing game.



DARRELL ROYAL
... strong again.



FRANK BROYLES
... high in the hills.

Rice

Jess Neely, dean of the Southwest Conference coaches, opens his 26th campaign at Rice with only 15 lettermen back and a dismal outlook for 1965.

Rice's fortunes lie in the hands of such proven performers as center Craig Christopher, Chuck Latourette and Gene Walker, and will probably feature a challenging defense.

Offensive power is lacking for the Owls until they can find a quarterback, but Jess Neely has finished in the second division only six times in 25 years.

The Owls will not only bid for the SWC title, they will also be after an unofficial championship of Louisiana. They meet Louisiana Tech Saturday and LSU the following week.

1965 RICE SCHEDULE

Sept. 18—Louisiana Tech
Sept. 25—At LSU
Oct. 2—Duke
Oct. 16—SMU
Oct. 23—At Texas
Oct. 30—At Texas Tech
Nov. 6—Arkansas
Nov. 13—Texas A&M
Nov. 20—At TCU
Nov. 27—Baylor

TCU

TCU is probably one of the league's biggest puzzles. The Frogs could be better, they could be worse.

Lack of backfield speed points to a poor season; good defense and SWC's top end Sonny Campbell point to a good season. Experts pick them anywhere from fourth to eighth.

But Abe Martin seemed optimistic when he greeted 75 candidates for opening drills, including 19 lettermen, so he at least is thinking in terms of improving last year's 4-6 slate.

For this improvement to occur, however, the Horned Toads must find some good sophomores to replace 19 departed lettermen and provide the much-needed depth that this year's substitution rule will necessitate.

1965 TCU SCHEDULE

Sept. 18—At Nebraska
Sept. 25—Florida State (n)
Oct. 2—Ark. (Little Rock) (n)
Oct. 9—At Texas Tech (n)
Oct. 16—Texas A&M (n)
Oct. 23—At Clemson
Oct. 30—At Baylor
Nov. 13—At Texas
Nov. 20—Rice
Nov. 27—SMU

SMU

Hard-luck SMU just hopes to keep healthy this year. If they do, they could make trouble.

Plagued by injuries all last season, the Ponies compiled a 1-9 record under Hayden Fry and were SWC cellar-dwellers.

Thirty-one lettermen reported on opening day as the Mustangs opened their drive to rebuild football fortunes. Unlike most SWC schools this year, SMU has proven quarterbacks — two of them — to pave the way for a winning season.

Mac White and Donnie Oefinger provide quality quarterbacking and speed merchant John Roderick returns this year with satisfactory grades, after spending last season with his head in books in season of games.

Sophomore Jim Hagle could add even more talent to the backfield as the Ponies swing into action Saturday against Miami.

1965 SMU SCHEDULE

Sept. 18—At Miami, Fla. (n)
Sept. 25—Purdue
Oct. 2—At Illinois
Oct. 9—At Rice (n)
Oct. 16—Texas Tech
Oct. 23—At SMU (n)
Nov. 6—At Texas A&M
Nov. 13—Arkansas
Nov. 20—At Baylor
Nov. 27—At TCU

Texas Tech

J. T. King's recovery program at Texas Tech produced a bowl participant as a reward for his fourth season at the helm, losing to Georgia in the Sun Bowl 7-0 for a 6-4-1 overall season record.

Tech has the best back in the SWC in all-America Donny Anderson, and King hopes to keep the foes from concentrating their defenses toward Anderson — which is unlikely.

Tech plans to use a split end in a modified I formation in an attempt to spread the defense.

Twenty-seven of 43 lettermen return, including 12 starters. Three-fourths of the Raiders' conference-leading backfield return, with quarterback Tom Wilson and Johnny Agan.

With a powerful offense and seven home games, Tech could prove to be a difficult power. They open the season Sept. 18 against Kansas.

1965 TEXAS TECH SCHEDULE

Sept. 18—Kansas (n)
Sept. 25—At Texas (n)
Oct. 2—Texas A&M (n)
Oct. 9—TCU (n)
Oct. 16—Oklahoma State (n)
Oct. 23—At SMU (n)
Oct. 30—Rice
Nov. 6—N. Mexico St. (n)
Nov. 13—Baylor
Nov. 20—At Arkansas

Baylor

John Bridges has achieved the third best record in the Southwest Conference during his six-season stay at Baylor, and his team appears third best again this year.

The Bears had 19 lettermen and 10 returning starters among 85 candidates reported reporting opening day.

Passing will again be emphasized featuring Terry Southall, junior wonderboy, and several exceptional receivers despite loss of Lawrence Elkins from last year's club.

Running, a weakness in the Baylor attack in recent seasons, could be improved through greater size and depth.

Baylor gets off to a fast start, meeting Auburn Saturday, followed by Washington, Florida and Arkansas in that order.

If the Bruins get by those four unscratched, watch out!

1965 BAYLOR SCHEDULE

Sept. 18—At Auburn
Sept. 25—Washington
Oct. 2—At Florida State
Oct. 9—Arkansas
Oct. 23—At Texas A&M
Oct. 30—TCU
Nov. 6—At Texas
Nov. 13—At Texas Tech
Nov. 20—SMU
Nov. 27—At Rice

Texas

Darrell Royal begins his ninth year at the University of Texas with the nation's second best won-lost-tied record (69-15-3) for an eight-season span.

Sixteen lettermen and 10 starters are among 84 Longhorns trying out for the team expected to wage a two-way battle with Arkansas for the Southwest Conference crown.

Texas likely will use more two-way players than its rivals, with all-America Tom Nobis and end Pete Lammons heading a list of double-duty performers. Only Nobis of five 1964 TU all-stars returns, but seven of the 10 who logged most playing time from tackle to tackle will be back.

The 'Horns will run basically from a winged-T with line balanced and "flip-flopping" along with halfbacks.

Texas opens the season against Tulane in New Orleans Friday.

1965 TEXAS SCHEDULE

Sept. 17—At Tulane (n)
Sept. 25—Texas Tech (n)
Oct. 2—Indiana (n)
Oct. 9—Okl. at Dallas
Oct. 16—At Arkansas
Oct. 23—Rice (n)
Oct. 30—At SMU
Nov. 6—Baylor
Nov. 13—TCU
Nov. 25—At Texas A&M

Arkansas

It wasn't ever quite official, but Arkansas fans will quickly tell you who the 1964 National Champion was.

Rolling to an 11-0 record including a Cotton Bowl victory, the Razorbacks took the SWC title by the thinnest of margins—a 14-13 win over Texas.

Twenty-seven lettermen remember that Austin triumph, and they will be out to repeat the performance in their own backyard Oct. 16.

Tackle Glen Ray Hines and wingback Jim Lindsey are the primary figures in the Hoy drive for a second straight championship. Hines is backed up by some able tackles and backfield strength is added by tailback Bobby Burnett.

Quarterback is the big question mark, but Arkansas coach Frank Broyles is working on the problem and figures to have the situation in hand by Saturday's opener with Oklahoma State.

1965 ARKANSAS SCHEDULE

Sept. 18—Okl. St. at L. Rock (n)
Sept. 25—Tulsa
Oct. 2—TCU at L. Rock (n)
Oct. 9—At Baylor (n)
Oct. 16—Texas
Oct. 23—North Texas at L. Rock (n)
Oct. 30—Texas A&M at L. Rock (n)
Nov. 6—At Rice
Nov. 13—At SMU
Nov. 20—Texas Tech

A&M WESLEY FOUNDATION

Church and Tauber Streets—North Gate
J. Phil Kirby, Campus Minister—Phone 846-6014

SUNDAY—Campus & Career Fellowship—5:30 P.M.
Wednesday Evening Forum—6:15 P.M.
FRIDAY—Holy Communion—6:45 A.M.
Wesley Coffee House—8:00 P.M.

All Meetings at Methodist Student Center

BAPTIST STUDENT UNION

(Student Center One Block North of Post Office)
Phone 846-6411

Prentis W. Chunn, Director—Res. 822-6949
Mrs. Sharon Satterwhite, Assistant

TUESDAY: 7:00 P.M.—BSU Vespers
THURSDAY: 7:00 P.M.—BSU Vespers

Statement of Purpose for the Campus Ministry at Texas A&M University

Texas A&M University is concerned with the total development of its students. The encouragement of spiritual growth is highly important in this program of total development for those who come here seeking an education.

There are many faiths represented among the students, faculty and staff member who comprise the University community. Our campus ministry is called upon to stimulate spiritual growth among the members of the University community as they search for more meaningful direction in their lives, according to their particular faiths. This task is accomplished through various types of worship, programming, and personal counseling, which we know as the campus ministry.

In a spirit of close harmony, the campus ministry assists the University in its educational program by helping members of the various faiths represented to become more sensitive to their responsibilities in the economic, political and social world. In so doing, the campus ministry performs the vital duty of demonstrating the close relationship between religious faith and worthy citizenship.

A program such as this requires continuous communication between the various faiths represented and the University. Effective communication assures each student the opportunity to hold fast to his faith while studying here, thus laying groundwork for continued spiritual growth in the years to follow.

Earl Rudder
President

UNIVERSITY LUTHERAN CHAPEL & STUDENT CENTER

(Missouri Synod)

315 N. Main

E. George Becker, Campus Pastor

Office Phone: 846-6687 — Res. Phone 846-6477

SUNDAY: 10:00 A.M. Bible Class
11:00 A.M. Morning Worship

WEDNESDAY: 7:30 P.M. Mid-Week Vespers

OUR SAVIOUR'S LUTHERAN STUDENT CENTER

Serving Lutheran Students of The American Lutheran Church and The Lutheran Church in America

2 Blocks North of North Gate at Main, Cross, & Tauber

Pastors: Carl Ruch, Ron Birk
Office in Lutheran Student Center — Phone 846-5011

SUNDAY:
8:15 A.M. Worship Service
9:30 A.M. Church School and Aggie Discussion Group
10:45 A.M. Worship Service

WEDNESDAY:
7:30 P.M. Student Vespers

B'NAI B'RITH HILLEL FOUNDATION

Ike and Fannie Sablosky Building — 800 Jersey St.
Mrs. Raymond Reiser, Hillel Student Advisor

Telephone 846-7313 — Res. 846-6553

Cultural Meeting — Every Wednesday Evening, 7:15 P.M.
Religious Services — Every Friday Evening, 7:15 P.M.

CAMPUS CHRISTIAN FELLOWSHIP

Sulphur Springs Rd. & Tauber St. (North Gate)

SPONSORS: Christian Church (Disciples of Christ), Presbyterian Church, United Church of Christ

Walter Allen, Campus Minister (Christian Church)
Ph. 822-5451 or 846-6639

Jim Fenner, Campus Minister (Presbyterian) Ph. 846-6639
Paul Baumer, Minister (United Church of Christ) Ph. 823-6272

SUNDAY: Campus Christian Fellowship Meetings
WEDNESDAY: Each first Wed. "Monthly Film Series" 7 P.M.
Other Wednesdays "Seminar Groups" 7 P.M.
THURSDAY: "Encounter Group" and Lunch (25¢) 12 Noon
FRIDAY: Morning Communion 6:45 A.M. (Methodist Student Center Chapel), Coffee Loft 7:45 P.M. 'til Midnight (Upstairs in the student center)

All Programs Held in Campus Christian Fellowship Student Center (also called the Presbyterian Student Center) Unless Otherwise noted.

CANTERBURY ASSOCIATION

EPISCOPAL CHURCH

906 Jersey Street (South Side of Campus)

The Rev. William Oxley, Rector
The Rev. Wesley Seeliger, Assistant
Phone 846-6133

SUNDAY—Worship Services
WEDNESDAY—Canterbury Association
WEDNESDAY Morning—Holy Communion