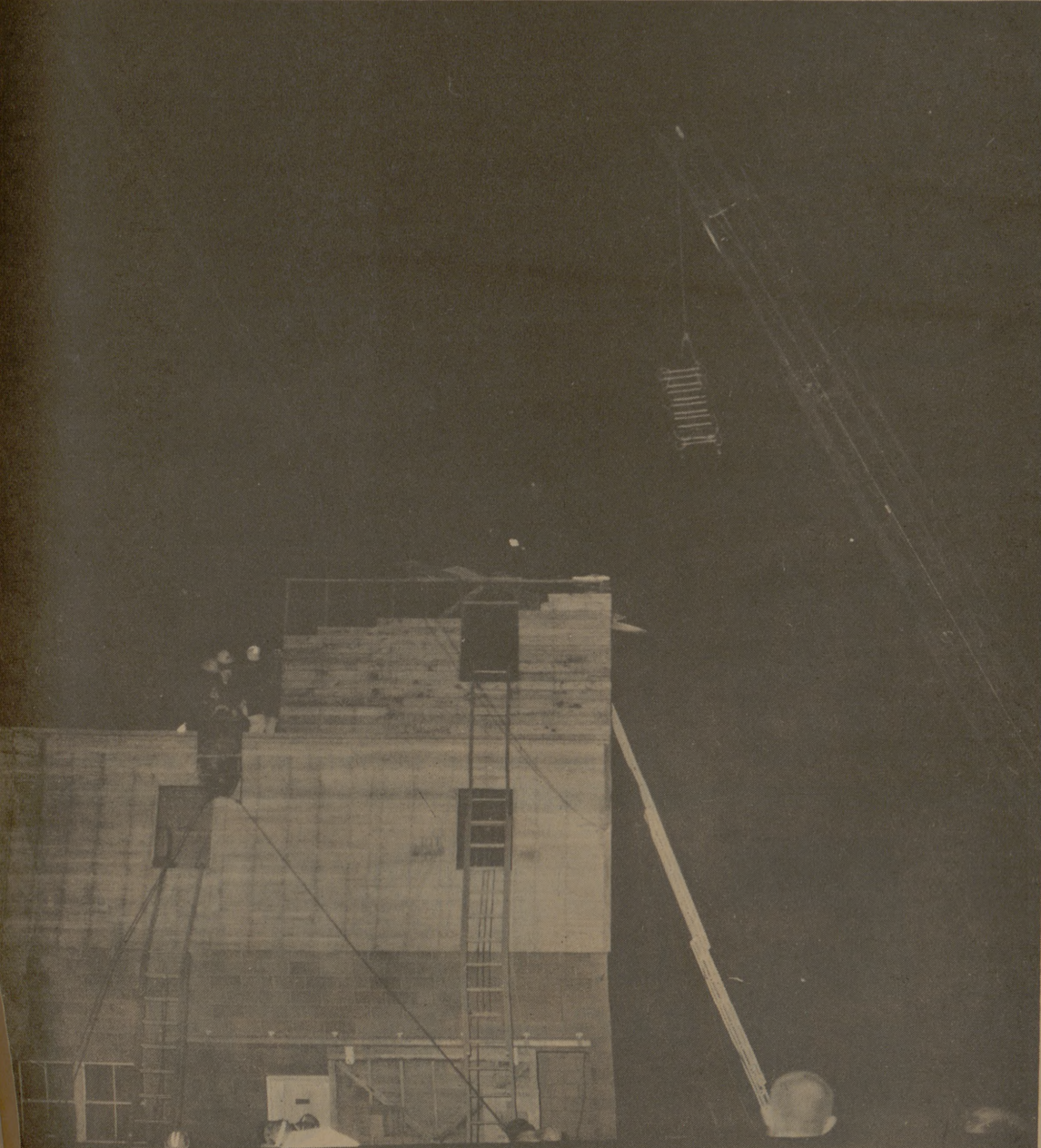


# Firemen Produce Spectacular Show



**AERIAL LADDER RESCUE**

An aerial ladder is used to lower a victim down in smooth compared to conventional methods. This method is quick and safe, in that the ride



**FUEL STORAGE BLAZE**

Firemen extinguished an intense gasoline blaze at a simulated bulk fuel storage dock. Last year nine people were killed at a similar fire in Kansas City. Fires like this are not rare around this type

Bryan-College Station citizens came in throngs to watch firemen demonstrate methods and equipment used to battle various types of blazes at Brayton Training Center, behind Easterwood Field Wednesday night.

Among the things they saw were a simulated plane crash, burning houses, auto, butane and gasoline fires and methods of rescue. The finale of the evening was a display of water from fire hoses and colored lights.

The demonstration was conducted by participants in the 36th annual Texas Firemen's Training School, now being held on campus.

Firemen from 465 cities and 20 states in the United States, from Japan, Mexico, Colombia, Venezuela and Saudi Arabia are participating in the school.

The school began July 25 and will last until August 6. Over 2,000 firemen are expected to participate.



**FOAM FIRE EXTINGUISHER**

Rapid-expanding foam is used to smother a house fire and push smoke out of the house, allowing firemen to enter. The foam is safe for firemen to work in, as shown by the man in the center.

## The Church.. For a Fuller Life.. For You..

### CALENDAR OF CHURCH SERVICES

<p><b>CHRISTIAN SCIENCE SOCIETY</b> 9:30 A.M.—Sunday School 11:00 A.M.—Sunday Service 11:00 A.M.—2 P.M.—Tues. Reading Rm. 7:00-8:00 P.M.—Wed., Reading Room 8:00 P.M.—Wed. Evening Worship</p>	<p><b>CHURCH OF THE NAZARENE</b> 9:45 A.M.—Sunday School 10:45 A.M.—Morning Worship 6:30 P.M.—Young People's Service 7:00 P.M.—Preaching Service</p>	<p><b>ST. MARY'S CATHOLIC</b> Sunday Masses—7:30, 9:00 and 11:00</p>
<p><b>FIRST BAPTIST</b> 9:30 A.M.—Sunday School 10:45 A.M.—Morning Worship 6:10 P.M.—Training Union 7:20 P.M.—Evening Worship 6:30 P.M.—Choir Practice &amp; Teachers' meetings (Wednesday) 7:30 P.M.—Midweek Services (Wed.)</p>	<p><b>ST. THOMAS EPISCOPAL</b> 906 Jersey Street, So. Side of Campus Rector: William R. Ozley 8:00 &amp; 9:15 A.M.—Sunday Service 9:15 A.M.—Nursery &amp; Sunday School <b>UNIVERSITY LUTHERAN</b> (Missouri Synod) 10:00 A.M.—Bible Class 11:00 A.M.—Morning Worship 7:30 P.M.—Wednesday Vesper</p>	<p><b>FAITH CHURCH</b> <b>UNITED CHURCH OF CHRIST</b> 9:15 A.M.—Sunday School 10:30 A.M.—Morning Worship 7:30 P.M.—Evening Service</p>
<p><b>A&amp;M CHURCH OF CHRIST</b> 8:00 &amp; 10:00 A.M. Worship 9:00 A.M.—Bible Study 5:15 P.M.—Young People's Class 6:00 P.M.—Worship 7:15 P.M.—Aggie Class 9:30 A.M.—Tues. Ladies Bible Class 7:15 P.M.—Wednesday - Bible Study</p>	<p><b>UNITARIAN FELLOWSHIP</b> 305 Old Hwy. 6 S. 10:00 A.M.—Sunday School 7:45 P.M.—First four Sundays of each month - Fellowship Meeting.</p>	<p><b>COLLEGE HEIGHTS ASSEMBLY OF GOD</b> 9:45 A.M.—Sunday School 11:00 A.M.—Morning Worship 6:30 P.M.—Young People's Service 7:30 P.M.—Evening Worship</p>
<p><b>A&amp;M PRESBYTERIAN</b> 7-9 A.M.—Sun. Breakfast - Stu. Ctr. 9:45 A.M.—Church School 11:00 A.M.—Morning Worship 6:00 P.M.—Sun. Single Stu. Fellowship 7:15 P.M.—Wed. Student Fellowship 6:45 A.M.—Fri. Communion Service Wesley Foundation</p>	<p><b>SECOND BAPTIST</b> 710 Eisenhower 9:45 A.M.—Sunday School 11:00 A.M.—Church Service 6:30 P.M.—Training Union 7:30 P.M.—Church Service</p>	<p><b>A&amp;M METHODIST</b> 9:45 A.M.—Sunday School 10:55 A.M.—Morning Worship 5:30 P.M.—Campus &amp; Career Class 5:30 &amp; 6:00 P.M.—MYP Meetings 7:00 P.M.—Evening Worship</p>
	<p><b>OUR SAVIOUR'S LUTHERAN</b> 8:15 &amp; 10:45 A.M.—The Church at Worship 9:30 A.M.—Bible Classes For All Holy Communion—1st Sun. Ea. Mo.</p>	<p><b>CHURCH OF JESUS CHRIST OF LATTER DAY SAINTS</b> 26th East and Coulter, Bryan 8:30 A.M.—Priesthood meeting 10:00 A.M.—Sunday School 6:30 P.M.—Sacrament Meeting</p>
		<p><b>FIRST CHRISTIAN CHURCH</b> Homestead &amp; Ennis 9:45 A.M.—Sunday School 10:50 A.M.—Morning Worship 5:30 P.M.—Young People</p>



Hillier Funeral Home

BRYAN, TEXAS  
502 West 26th St.  
PHONE TA 2-1572

Campus  
and

Circle  
Theatres

College Station

College Station's Own  
Banking Service

University  
National Bank  
NORTH GATE

Sure Sign of Flavor



SANITARY  
Farm Dairies

Central Texas  
Hardware Co.

BRYAN

- HARDWARE
- CHINAWARE
- CRYSTAL
- GIFTS

## THREE CHEERS



Here comes the winner! Can he hold that first place position, or will he fail? In the eyes of these youngsters, victory is the most important thing in the world. *Everything* hinges on the outcome of this contest!

Enthusiasm is part of successful living, stimulating the imagination, and inspiring the mind. It is contagious, too, and can affect co-workers, friends, families. It is essential to organizations as well as to individuals.

Through the centuries a rich spiritual enthusiasm has been handed down by the Church, one of the greatest institutions on earth. Its members, working together, fired by the enthusiasm of faith, can give you renewed inspiration, and strength.

Why not attend church next Sunday? Become a part of this great fellowship of believers! You, too, can be a winner.

Copyright 1965 Keister Advertising Service, Inc., Strasburg, Va.

Sunday Genesis 32:22-32	Monday Chronicles 29:6-9	Tuesday Chronicles 29:10-19	Wednesday Corinthians 9:19-27	Thursday Corinthians 2:12-17	Friday James 2:14-26	Saturday John 5:1-5
-------------------------------	--------------------------------	-----------------------------------	-------------------------------------	------------------------------------	----------------------------	---------------------------

### THE CHURCH FOR ALL ALL FOR THE CHURCH

The Church is the greatest factor on earth for the building of character and good citizenship. It is a storehouse of spiritual values. Without a strong Church, neither democracy nor civilization can survive. There are four sound reasons why every person should attend services regularly and support the Church. They are: (1) For his own sake. (2) For his children's sake. (3) For the sake of his community and nation. (4) For the sake of the Church itself, which needs his moral and material support. Plan to go to church regularly and read your Bible daily.



The  
Exchange  
Store

"Serving Texas Aggies"

Bryan Building  
& Loan  
Association

BRYAN

Lilly

MELLORINE  
SHERBET  
ICE CREAM

Photos  
By  
Ham  
McQueen

### FIDELITY UNION LIFE



### WHY START THE COLLEGE MASTER NOW?

#### Why the College Master Program?—

—This is an era of specialization. Fidelity Union is the national leader in serving the needs of college men. This specialization results in economy of operation and savings that are passed on to the policyholder.

#### Why NOW?—

—Life insurance premiums increase approximately 4% to 6% each year that you wait. The College Master allows you to pin down today's age with complete coverage and defer the first year's premium deposit up to five full years.

846-8228

Aggieland Agency  
Fidelity Union Life Insurance Company  
N. Gate College Station

Mink Art Supply  
Picture Frames  
923 So. College Ave - Bryan, Texas

PARDNER  
You'll Always Win  
The Showdown  
When You Get  
Your Duds Done  
At  
CAMPUS  
CLEANERS

