

# 6 A&M Students To Begin Unique Oceanographic Research

The challenges of deep sea oceanographic research will be faced by six undergraduates at Texas A&M for a special summer program. They will sail from Galveston Monday.

The unique program of oceanographic research participation by undergraduates from various colleges is sponsored cooperatively by Texas A&M and the National Science Foundation.

The six students including two coeds chosen from applicants in virtually every state spend the summer at A&M. Each works on a research project in the Department of Oceanography and Meteorology.

"I get a lot of fun out of supervising this program," Dr. Ernest E. Angino said. "The real job is in picking the people."

The four young men and two coeds come from as many colleges. They are majoring in various fields of science. Each is a junior or senior academically.

The students look forward to the cruise aboard the A&M Research Vessel Alaminos. The Mexican coastline around Vera Cruz may be sighted at one point of the 10-day cruise into the southwestern Gulf of Mexico.

Geological oceanography is the prime reason for this particular cruise. The Alaminos is at sea most of the time. Women scientists and technicians sail often on the research cruises.

Plans are to take 30-foot samples or cores from the bottom of the Gulf of Mexico out where the Gulf is deepest. This means the cores must be removed from depths of more than 10,000 feet. Other research also will be conducted.

None of the undergraduate research participants ever before has been on a deepsea cruise.

"The idea is to let these students get an idea of what research is both in the laboratory and out at sea," Dr. Angino said.

Chief scientist for the July 26-Aug. 4 cruise will be William R. Bryant, a geological oceanographer. The scientific party aboard the Alaminos will include more than a dozen other persons.

The six undergraduate researchers are Glenn Husfeld of Brenham, Ronald Birkelback of Dallas, Hugh Kasbaum of Oklahoma City, Judy Frandolig of San Antonio, David Soileau of St. Martinville, La. and Sandra Schultz of Valley Mills.

## Henry Ross Will Retire In August

Prof. Henry Ross, Campus Coordinator for the Texas A&M System Office of International Programs, will retire in August after a distinguished 30-year career with the University, Dr. Jack D. Gray, Director of International Programs, has announced.

Dr. Gray praised Ross for his work as Senior A&M Agricultural Advisor in helping to organize the East Pakistan Agricultural University, which began operations in 1961. The University today has an enrollment of 1,000 students and programs in agriculture, animal husbandry and veterinary medicine.

In 1962, Ross became the coordinator of A&M's Tunisia Program and was assigned to develop a new agricultural college at Chott-Maria. At present, eight A&M staff members serve as advisors at the newly-established college and 27 future Tunisian members of its faculty are enrolled at Texas A&M.

Ross joined A&M's Dept. of Agricultural Education in 1935. In 2 years, Ross taught some 1,500 graduate and undergraduate students and worked in about 300 in-service training programs for vocational agriculture teachers.

**Electric Committee Will Meet Friday**  
The advisory committee of the Electric Power Institute of Texas A&M will meet in the faculty room of the Coke building (Friday).  
EPI, a part of the Department of Electrical Engineering, conducts research and development in relation to generation, transmission, distribution and utilization of electrical energy.  
A corollary of the objective is development of an outstanding graduate program for electrical engineering students.

## CONDENSED STATEMENT OF CONDITION OF University NATIONAL BANK

AT THE CLOSE OF BUSINESS, JUNE 30, 1965

RESOURCES	
Cash	\$1,010,946.03
U. S. Government Bonds	1,095,516.54
Municipal Bonds	317,712.35
Stock Federal Reserve Bank	10,050.00
Loans	3,066,065.69
Banking House	150,200.00
Furniture and Fixtures	41,407.27
Other Assets	3,633.46
Other Assets	3,633.46
<b>TOTAL RESOURCES</b>	<b>\$5,695,531.34</b>

LIABILITIES	
Capital Stock	\$ 200,000.00
Surplus	135,000.00
Undivided Profits	98,907.62
Deposits	5,246,358.06
Reserves	15,265.66
<b>TOTAL LIABILITIES</b>	<b>\$5,695,531.34</b>

### OFFICERS

- R. B. Butler  
Chairman of Board
- Harold Sullivan  
President
- J. B. Dick Hervey  
Vice-President
- H. E. Burgess  
Vice-President
- Lowell F. Jones  
Assistant Vice-President
- Leo Moon  
Cashier
- Lois Bethea  
Assistant Cashier
- Delbert R. Stanley  
Assistant Cashier

### DIRECTORS

- Fred J. Benson
- H. E. Burgess
- R. B. Butler
- J. B. Dick Hervey
- Coulter Hoppess
- L. G. Jones
- Harold Sullivan
- T. R. Timm
- T. E. Whitley

## University NATIONAL BANK

INVITES YOU TO *Bank With Us*

### CHECK THESE TIMELY BANKING SERVICES:

- \* DRIVE IN BANKING
- \* AMPLE AND EASY PARKING
- \* SAVINGS ACCOUNTS, 4% PAID QUARTERLY
- \* BANK-BY-MAIL
- \* FOREIGN DRAFTS
- \* SAFETY DEPOSIT BOXES
- \* NIGHT DEPOSITORY
- \* TRUST SERVICES
- \* INVESTMENT SERVICES

"Your Account Handled Carefully and Efficiently"

### LOANS AT BANK RATES

- COMMERCIAL
- AUTO-NEW & USED
- TRAVEL
- HOME IMPROVEMENT
- REAL ESTATE
- APPLIANCE
- EDUCATIONAL
- AGRICULTURAL
- PERSONAL

"Your Loans Processed Discreetly and Promptly"

## University NATIONAL BANK

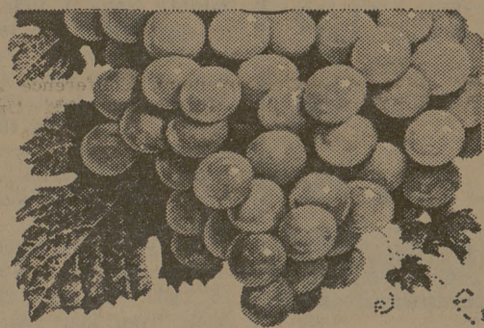
Member Federal Reserve System

Insured by F.D.I.C.

"On The Side of Texas A&M"

College Station, Texas

# IT'S SAFEWAY FOR QUALITY



**GRAPES**  
Thompson Seedless.  
wonderful taste and oh... so Juicy.  
Ideal munching.  
lb. **19¢**

- Nectarines** California's Finest, Flavorable and Juicy. lb. **25¢**
- Fresh Limes** Perfect Limeade—3-Count Pkg. **15¢**
- Radishes** Brighten up your Salads—6-oz. Pkg.—Each **2 for 25¢**
- Pascal Celery** Fresh, Crisp Stalks—Each **25¢**
- Romaine** Perfect for Zesty tossed salads—Bunch **25¢**

**Santa Rosa Plums**  
Full of Juice and Flavor. Just right for munching. Perfect for Jellies and Jams.  
**2 Lbs. 25¢**

**Peaches** Arkansas. Now's the time for freezing or home canning.  
**2 Lbs. 25¢**

**Regular or Drip Grinds.** (10¢ off label) **2 Can 97¢**  
Edwards (10¢ off label) 97¢  
With \$2.50 Purchase

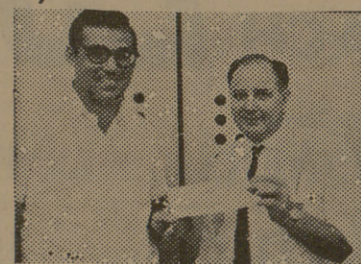
**White Magic.** (10¢ off label)—Giant Box **49¢**

**Van Camp—No. 300 Can** (Highway—10 for \$1) **4 for 49¢**

**Tasty, sliced and fried for Sandwiches—12-oz. Can** **39¢**

**PLAY TEXAS MONEY GAME**  
AT SAFEWAY  
Complete Rules and Details at Your Favorite Safeway Store

*Congratulations To...*  
**MR. JOHN M. HOWARD** 5499 Glen Lakes  
Dallas, Texas  
**\$1,313.00 WINNER**



- Del Monte Drink** Pineapple-Grapefruit Orange-Pineapple. 46-oz. Can **3 for 89¢**
- Bartlett Pears** Highway—No. 2 1/2 Can **3 for 89¢**
- V-8 Cocktail** Vegetable Juice. 46-oz. Can **2 for 69¢**
- Instant Tea** Lipton. (10¢ off label)—3-oz. Jar **69¢**
- Family Flour** Kitchen Craft. **5 Lb. 39¢**

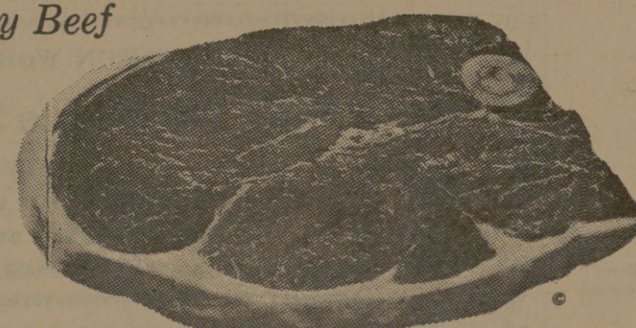
- Ice Milk** Lucerne. Assorted Flavors. A Real cool treat for hot weather—1/2 Gallon Ctn. **49¢**
- Fish Sticks** Captain's Choice. Pre-cooked. 14-oz. Package **49¢**
- Swanson Dinners** 3-Course. Salisbury Steak, Chicken, Turkey or Beef—1 1/2-oz. Pkg. **69¢**
- Orange Juice** **43¢**
- French Fries** Belair. Crinkle Cut—9-oz. Pkg. **5 for \$1**

*Dairy Fresh...*  
**Grade "A" Eggs** 3 Doz. **\$1**  
Breakfast Gums, Medium Size. Grade "A" Quality.  
**Butter** Shady Lane—1-Lb. Pkg. **69¢**  
**Sour Cream** Lucerne—8-oz. Ctn. **29¢**

**Folger's Coffee Detergent**  
**Pork & Beans**  
**Armour's Treet**

U.S.D.A. Choice Grade Heavy Beef

**Round Steak**  
Full Cut, U.S.D.A. Choice Grade Heavy Beef. Each cut is close-trimmed to remove excess waste and fat. It gives you more good eating meat for your money! And Safeway's famous guarantee means you must be completely satisfied with each meat purchase!  
lb. **79¢**



- Top Round Steak** Boneless, U.S.D.A. Choice Grade Heavy Beef. lb. **99¢**
- Boneless Steak** Bottom Round or Swiss. U.S.D.A. Choice Grade Heavy Beef. lb. **89¢**
- Loin Tip Steak** Boneless, U.S.D.A. Choice Grade Heavy Beef. lb. **\$1.29**
- Rump Roast** U.S.D.A. Choice Grade Heavy Beef—Lb. **75¢**
- Boneless Roast** Loin Tip U.S.D.A. Choice Grade Beef—Lb. **\$1.15**

- Link Sausage** Mexican Hot—Lb. **55¢**
- Jumbo Bologna** Sliced—16-oz. Pkg. **55¢**
- Skinless Franks** Sliced—1-Lb. Pkg. **49¢**
- Boneless Ham** Samuels. Half or Whole—Lb. **\$1.25**
- Hen Turkeys** Young, U.S.D.A. Grade "A". 8 to 14-Lb. Avg.—Lb. **43¢**
- Cornish Hens** Game, U.S.D.A. Grade "A". 20-oz. Hens—Each **69¢**
- Cut-Up Fryers** Manor House Tray-Pak—Lb. **35¢**

Breakfast Treat  
**SLICED BACON**  
Safeway Thick **\$1.29** } Armour Thin **\$1.39**  
2-Lb. Pkg. } 2-Lb. Pkg.

Prices and Coupons Effective Thurs., Fri. and Sat., July 22, 23 and 24 in Bryan.....

We Reserve the Right to Limit Quantities. No Sales to Dealers.



**SAFEWAY**

© Copyright 1960, Safeway Stores Incorporated.

Redeem this Coupon for **100 FREE GOLD BOND STAMPS**  
With Purchase of \$10.00 or more (Excluding Cigarettes)  
One per family • Coupon Expires July 24, 1965

This Coupon Worth **100 Free Gold Bond Stamps**  
Plus your regularly earned Gold Bond Stamps with the purchase of 6-oz. Jar Maxwell House **INSTANT COFFEE**  
Coupon Expires July 24, 1965

This Coupon Worth **75 Free Gold Bond Stamps**  
Plus your regularly earned Gold Bond Stamps with the purchase of Any 3-Lb. or Larger Heavy Beef or **BABY BEEF ROAST**  
Coupon Expires July 24, 1965

This Coupon Worth **50 Free Gold Bond Stamps**  
Plus your regularly earned Gold Bond Stamps with the purchase of **TWO—1-Lb. Cartons Lucerne**  
★ Cole Slaw or ★ Carrot & Raisin Salad  
Coupon Expires July 24, 1965

This Coupon Worth **25 Free Gold Bond Stamps**  
Plus your regularly earned Gold Bond Stamps with the purchase of **TWO—Heads ICEBERG LETTUCE**  
Coupon Expires July 24, 1965

This Coupon Worth **50 Free Gold Bond Stamps**  
Plus your regularly earned Gold Bond Stamps with the purchase of 16-oz. Box Gold Seal Snowy **POWDERED BLEACH**  
Coupon Expires July 24, 1965