

Army Preparing Summer Course

AUSTIN — Some 2,500 Fourth U. S. Army area reserve officers are preparing to spend their annual two weeks active duty training this summer at branch service schools throughout the nation, according to Fourth Army spokesmen.

The officers, from Texas, Arkansas, Louisiana, Oklahoma and New Mexico, are all enrolled in the USAR schools program.

The USAR schools program is designed to provide the reserve component officer with the same opportunity for military education as that available to active Army officers. Reserve officers taking career courses for branch qualification in the Army must attend 24 two-hour drills at home station and a two-week summer training session at a branch service school such as the Infantry School or the Armor School each summer for four years.

Reservists enrolled in the Command and General Staff course attend four of their required five

annual active duty training tours at Fourth Army installations and go to Fort Leavenworth, Kan., for the final two-week training period.

Three service schools in the Fourth Army area provide summer training for officers in the Medical Service Corps, Air Defense and Artillery. These schools take students from the active Army and the reserve components for their branch training. The Medical Field Service School is at Brooke Army Medical Center, San Antonio, Tex., the Air Defense is at Fort Bliss Tex., and the Artillery School is at Fort Sill, Okla.

Reserve officers taking career courses in other branches of the Army attend the parent service school of their branch in other Army areas. For example, infantry officers attend the Infantry School at Fort Benning, Ga., and finance officers attend the Finance School at Fort Benjamin Harrison, Ind.

Major Addresses Close 7th Annual Traffic Conclave

Two major addresses Friday morning ended the two-day 7th Annual Transportation Conference on campus.

Edward V. Kiley, director of Research and Transportation Economics for American Trucking Associations, discussed the "Future of Highway Transport" at 8:30 a.m. in the Ballroom of the Memorial Student Center.

He was followed at 10 a.m. by L. M. Clauson, chief engineer of the Iowa State Highway Commission and chairman of the Transport Committee of the American Association of State Highway Officials. His talk will outline the TCAASHO position on vehicle weights and sizes.

Fred J. Benson, dean of the College of Engineering, made closing remarks at 11:50 a.m.

In an address Thursday afternoon to the 150 persons participating, Clair M. Roddewig of Chicago, president of the Association of Western Railways, said all forms of public transportation should have adequate and uniform freedom to compete, grow, diversify, experiment, and adjust quickly to changing conditions.



TRANSPORTATION TALK ... members discuss conference events.

Weather, Holidays Helping To Keep Students In Check

FORT LAUDERDALE, Fla. (AP) — Bad weather and late Easter holidays have spread the impact of vacationing college students on Florida this spring and helped keep the youngsters in check.

The fact that Easter comes later than usual — April 18 — will cut down the crowds usually flocking to celebrate the spring recess at Fort Lauderdale, Palm Beach and Daytona Beach. The weather at Daytona Beach

helped, too, according to police. Capt. W. C. Hall, who pointed out today that rain and cold on both late March weekends kept most vacationing college students inside.

"We have had only a few thousand so far," Hall said, "and I understand most of them are going back to Fort Lauderdale. Daytona Beach is hiring extra policemen and beach lifeguards and arranging to provide entertainment for the collegians.

No vandalism connected to the visitors has been reported in Florida this spring.

"This is a peculiar year and the fluctuation of dates has helped us," said Bob Bornscheuer, recreation director at Fort Lauderdale. "With Easter coming late, it gives us a spread of about six weeks from the start of mid-semester vacations until the end of Easter."

He said the mid-semester group had just about cleared out of Fort Lauderdale. These students will have only three or four days off at Easter.

Supervised entertainment extends from 1 to 5 p.m. and from 8 p.m. to 1 a.m. daily. In the afternoon, volleyball, basketball and touch football games, string trios and dance contests keep the restless students busy. Two bands provide music for dancing at night.

It is estimated that 34,000 to 36,000 students will visit Fort Lauderdale where spring weather has been fair and mild, in contrast to the cold and rain at Daytona Beach, 234 miles up the coast.

Some students also will go to Gulfport and Biloxi, Miss., and Corpus Christi, Tex., while others will go to Bermuda or the Bahamas.

A growing number of students plan to forsake the sun and surf to give their time and energy to civil rights causes.

"In general, the students who are going to Florida are a different group from those involved in civil rights protests," said Dean Jack Matthews of the University of Missouri.

CAMPUS BRIEFS 'World Around Us' Series Rescheduled For April 9

The last presentation of the "World Around Us" series, sponsored by the Great Issues Committee, has been rescheduled for April 9.

Jerry Stevens, publicity chairman for the Great Issues Committee, said "Escape from Tibet" is scheduled for 8 p.m., April 9, in the Memorial Student Center Ballroom. The event was originally set for Friday.

Thubten Jigme Norbu, brother of the Dalai Lama, will tell the story of intrigue and violence behind Red China's overthrow of his country. It will also feature his exciting escape from the Red Chinese.

Tickets may be obtained at the Student Programs Office of the MSC.

Engineers To Hold Contest

The Annual Freshman Engineering Graphics Contest will be held at 1 p.m., April 24, in Room 301 of the Engineering Building. All students enrolled in an undergraduate Engineering Graphics course during the 1964-1965 school year, and who have not entered the contest before, are eligible.

As in previous years, the lettering division of the contest may be entered prior to the other divisions. Contest rules, lettering material, and additional informa-

tion may be obtained now at the Department of Engineering Graphics, Room 311, Engineering Building.

The awards program will be held at 9 a.m., April 28; place and program will be announced later.

Married Student Enrollment High

Almost a third of the Spring Semester enrollment at A&M is made up of married students. Statistics released by Registrar H. L. Heaten indicate that single students dominate the undergraduate enrollment, while the opposite is true for graduate enrollment.

Only 21.91 per cent, or 1,376 undergraduate students are married, compared to 72.86 per cent, or 1,047 graduate students.

The overall figures show 2,423 married students and 5,293 single students for a total enrollment of 7,716. Percentage-wise, that's 31.40 compared with 68.60.

NSF Housing Ready

Persons interested in renting their furnished apartments or houses to participants in National Science Foundation summer programs at A&M may contact C. M. Loyd, NSF programs coordinator.

Loyd said detailed listings of the college teachers and others who will be here for programs lasting up to 12 weeks will be mailed next week to persons listing possible rentals. Then the owner contacts the person coming here.

"It's a good arrangement for all concerned," Loyd said. He noted this will be the tenth summer for NSF programs on campus.

KORA Gives Aid Radio Station KORA in Bryan has initiated a \$200 scholarship in radio news, to be effective with the fall semester.

Mike Mistovich, owner of the station, said the scholarship could be awarded as one or two grants, at the discretion of the Department of Journalism.

This is the first scholarship grant made available specifically for the radio news emphasis in the department, Delbert McGuire, department head, said.

GSC To Stage Dance The A&M Graduate Student Spring Dance, in cooperation with the Former Students Association, will be held at 8:30 p.m., April 10.

The dance is scheduled in the Knights of Columbus Hall at Palasota and Groesbeck Streets in Bryan.

Music will be played by The Standards Combo of A&M. Men are required to wear coats and ties.

Tickets may be purchased through the Graduate Student Wives Association, Graduate Student Council, Memorial Student Center Fiscal Office, or call Mrs. Carl Droste, 846-5388, T-1-D Hensel Apartments, College Station.

Literary Festival Continues Monday

The Literary Festival at A&M continues Monday with a lecture and a series of readings from American fiction.

Dr. Richard H. Ballinger will present a paper entitled "The Place of William Dean Howells in American Literature" at 4 p.m. in the Assembly Room of the Memorial Student Center.

"Readings in Nineteenth Century American Fiction—A Perspective" will be presented at 8 p.m. in the MSC Assembly Room by the Oral Interpretation Class. Directing will be Vic Wiening, assistant professor of theater arts and English.

Assistant professor Allen Schrader will present "Nineteenth Century," a suite for piano and orchestra, with the readings. He also is a member of the English faculty.

Ballinger will trace Howells' reputation as both a novelist and a critic and will evaluate his contribution to literature. The A&M professor will discuss Howells' as writers, such as Henry James and Mark Twain, and will also explain Howells' encouragement of young writers.

The Church.. For a Fuller Life.. For You..

CALENDAR OF CHURCH SERVICES

| | | |
|---|--|---|
| CHRISTIAN SCIENCE SOCIETY 9:30 A.M.—Sunday School 11:00 A.M.—Sunday Service 11:00 A.M.—2 P.M.—Tues. Reading Rm. 7:00-8:00 P.M.—Wed., Reading Rm. 8:00 P.M.—Wed. Evening Worship | CHURCH OF THE NAZARENE 9:45 A.M.—Sunday School 10:45 A.M.—Morning Worship 6:30 P.M.—Young People's Service 7:00 P.M.—Preaching Service ST. THOMAS EPISCOPAL 906 Jersey Street, So. Side of Campus Rector: William E. Oxley 8:00 & 9:15 A.M.—Sunday Service 9:15 A.M.—Nursery & Sunday School UNIVERSITY LUTHERAN (Missouri Synod) 10:00 A.M.—Bible Class 11:00 A.M.—Morning Worship Services at Presbyterian Student Center UNITARIAN FELLOWSHIP 305 Old Hwy. 6 S. 10:00 A.M.—Sunday School 7:45 P.M.—First four Sundays of each month — Fellowship Meeting. | ST. MARY'S CATHOLIC Sunday Masses—7:30, 9:00 and 11:00 FAITH CHURCH UNITED CHURCH OF CHRIST 9:15 A.M.—Sunday School 10:30 A.M.—Morning Worship 7:30 P.M.—Evening Service COLLEGE HEIGHTS ASSEMBLY OF GOD 9:45 A.M.—Sunday School 11:00 A.M.—Morning Worship 6:30 P.M.—Young People's Service 7:30 P.M.—Evening Worship A&M METHODIST 9:45 A.M.—Sunday School 10:55 A.M.—Morning Worship 5:30 P.M.—Campus & Career Class 6:30 & 6:00 P.M.—MYF Meetings 7:00 P.M.—Evening Worship CHURCH OF JESUS CHRIST OF LATTER DAY SAINTS 26th East and Goulter, Bryan 8:30 A.M.—Priesthood meeting 10:00 A.M.—Sunday School 6:00 P.M.—Sacrament Meeting FIRST CHRISTIAN CHURCH Homestead & Ennis 9:45 A.M.—Sunday School 10:50 A.M.—Morning Worship 5:30 P.M.—Young People |
|---|--|---|



Hillier Funeral Home
BRYAN, TEXAS
502 West 26th St.
PHONE TA 2-1572

Campus and Circle Theatres
College Station

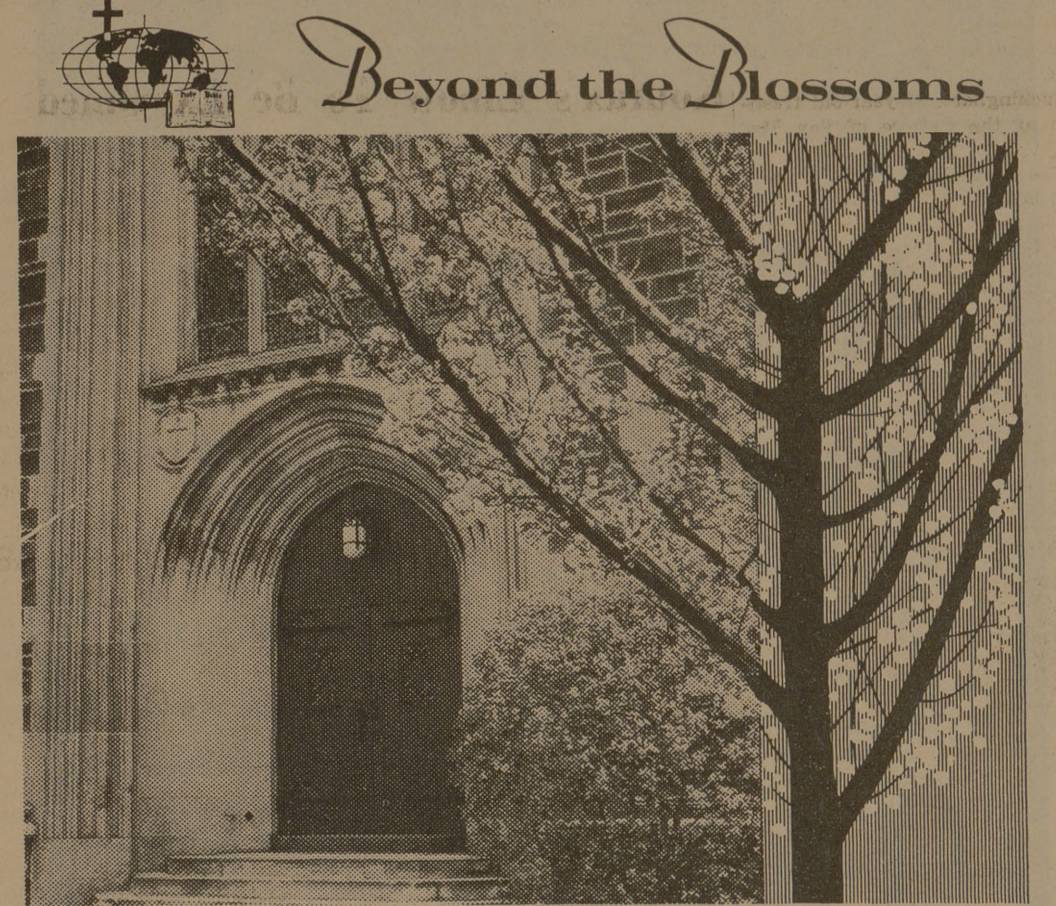
College Station's Own Banking Service
University National Bank
NORTH GATE

Sure Sign of Flavor
ICE CREAM

SANITARY Farm Dairies

Central Texas Hardware Co.
BRYAN

- HARDWARE
- CHINAWARE
- CRYSTAL
- GIFTS



THE CHURCH FOR ALL ALL FOR THE CHURCH

The Church is the greatest factor on earth for the building of character and good citizenship. It is a storehouse of spiritual values. Without a strong Church, neither democracy nor civilization can survive. There are four sound reasons why every person should attend services regularly and support the Church. They are: (1) For his own sake. (2) For his children's sake. (3) For the sake of his community and nation. (4) For the sake of the Church itself, which needs his moral and material support. Plan to go to church regularly and read your Bible daily.

When the buds burst into fragile flower, and their breath is everywhere, and a warming breeze caresses the cold, damp earth . . . this is more than Spring. This is the time of Promise.

For these same festive branches shall lift a precious burden of fruit when the red-gold mantle of harvest falls across the land.

When human souls awaken to the reveille of faith, and hymns and prayers fill the arches of heaven, and the warmth of an ageless hope reaches from heart to heart . . . this is more than Lent.

For the faith which blossoms today will bear its own precious fruit. Love! Joy! Peace! The harvest of souls like yours and mine is beginning anew to grow.

Copyright 1965 Keister Advertising Service, Inc., Strasburg, Va.

| | | | | | | |
|----------------------------|-----------------------------|--------------------------------|------------------------------|--|------------------------------|------------------------------------|
| Sunday Isaiah 18:1-7 | Monday Isaiah 35:1-10 | Tuesday Matthew 13:24-32 | Wednesday John 4:31-38 | Thursday I Thessalonians 2:13-20 | Friday I Peter 1:10-21 | Saturday Revelation 14:12-16 |
|----------------------------|-----------------------------|--------------------------------|------------------------------|--|------------------------------|------------------------------------|

The Exchange Store
"Serving Texas Aggies"

Bryan Building & Loan Association
BRYAN

Lilly
MELLORINE
SHERBET
ICE CREAM

Sherwood NURSING HOME

Memorial Drive — Bryan, Texas

NEW-ULTRA MODERN CLASS III HOME
Qualified under the vendor Medical Programs for all Three Classifications
Registered and Licensed Vocational Nurses - 24 hours daily

RATES
Competitive Rates - Starting at \$145.00 and up per month

VISITING HOURS
Visitors welcome from 1 p. m. to 8 p. m.
Monday thru Sunday

For further information:
CALL THE ADMINISTRATOR AT—
TA 3-8104 or TA 3-8105