



FROM THE
Sidelines
By LANI PRESSWOOD

At precisely 8 o'clock Tuesday morning, Dr. Chris H. Groneman passed out several dozen forms which, when properly autographed, will greatly determine the course of A&M football in the next several autumns.

These documents are called letters-of-intent and their distribution heralds the renewal of the annual recruiting jamboree in the Southwest Conference.

Coach Gene Stallings and his aggressive young staff scattered immediately from the campus to the four corners of the state in search of heavy-handed signatures from teen-age athletic prodigies. Results of their talent search will gradually filter in but by the end of next week most of the prep stars will have made their college decision known.

From all indications Cadet recruiting is going exceedingly well thus far. Announcements from top prospects, unofficial though they are, have been greatly encouraging.

The crop of Texas high school seniors now being sought after will form the nucleus of the SWC championship clubs three and four years hence. Estimates have run as high as 90 per cent on the value of recruiting to a winning college team.

Thus, college coaches here and all across the nation spend valuable time, money and energy in a frenzied effort to stock their cupboards for future campaigns. It is a fact of life in intercollegiate athletics but in many ways it is a regrettable one.

The flagrant under-the-table offers and high-pressure tactics used by some coaches smacks of overemphasis and professionalism. More and more universities are having to decide between a big time athletic program and academic integrity.

Nevertheless, the albatross of recruiting has been firmly draped around the collegiate neck and no alternative acceptable to a majority of the colleges has as yet been presented. At their winter meeting the SWC fathers adopted two new measures concerning recruiting. One places a two-year limit on athletic scholarships, though they may be renewed at the discretion of the individual coach.

The other sets a ceiling of 50 on the number of football scholarships each league school can hand out in any one season. Both statutes will go into effect next year.

The moves are beneficial in that they should serve to equalize strength in the circuit and thus keep attendance high at eight schools instead of two.

They could backfire on the conference, however, if non-SWC schools begin to siphon off schoolboy talent that would have otherwise been channeled into league schools. Oklahoma and Houston are the two institutions which immediately come to mind as most likely to benefit from the changes.

But for the moment at hand, it's time to sit back and watch the first returns come in on the 1968 football season.

SEC May Integrate Soon

LEXINGTON, Ky. (AP)—Coach Charlie Bradshaw of Kentucky confirmed Wednesday he is interested in one or more Negro football players for next season.

If a Negro is put on the team, he would be the first in the Southeastern Conference, the only major college conference without racial integration.

Now
King's Candies
—and
FLOWERS
for someone special on Valentine's Day
at
Aggieland Flower Shop
VI 6-5825 N. Gate
Member Florists' Telegraph Delivery Association

FIDELITY UNION LIFE

Aggieland Representatives

Larry Greenhaw '64 Melvin Johnson '64 Charles Thomas '64 Charles Johnson '62

TO COLLEGE SENIORS and GRADUATE STUDENTS
You will be particularly interested in the fact that the College Master Policy

- ... has no war exclusion clause.
- ... affords excellent savings and insurance features.
- ... provides a unique family plan feature.
- ... is guaranteed by a top company.
- ... gives Insurance Now, with premium deposits deferred until you are out of school.

For Information, call: **AGGIELAND AGENCY**
VI 6-8228



KNOW THE BEST BUY THE BEST ...AND SAVE!

FINE FOOD

SURFINE
FLOUR
5 LB. BAG **39¢**



4¢ OFF LABEL
CRISCO
SHORTENING
3 LB. CAN **29¢**
Limit One With \$5.00 Purchase or More Excluding Cigarettes

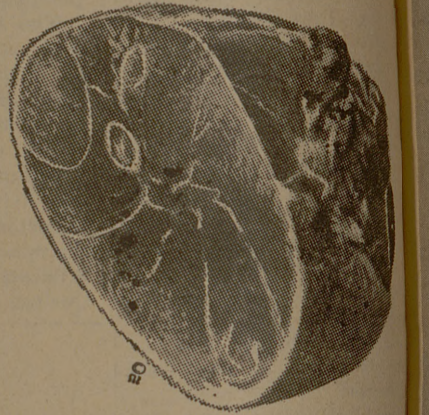
MOHAWK HAM SALE

SHANK PORTION LB. **29¢**

BUTT PORTION LB. **39¢**

CENTER PORTION 3 to 5 Lb. Avg. LB. **65¢**

CENTER SLICES LB. **69¢**
CENTER SLICES BONELESS—LB. **79¢**



BACON Tall Korn Thick Sliced 2 Lb. Pkg. **98¢**

BOLOGNA Jumbo, All Meat Sliced Lb. **39¢**

HEAD & SHOULDER Lotion Shampoo 85¢ Size **59¢**

BATH OIL Softique \$1.98 Size **\$1.49**

MUM CREAM Deodorant 49¢ Size Plus Tax **34¢**

GRAVY TRAIN Gaines Dog Food 5 Lb. Bag **79¢**

Swift Premium Luncheon
MEAT
12-OZ. CAN **39¢**

KRAFT
MIRACLE WHIP
SALAD DRESSING **39¢** Qt.
Limit One With Purchase \$2.50 or More Excluding Cigarettes

Peter Pan **PEANUT BUTTER** 18-Oz. **59¢**

CACKLEBERRY **LARGE EGGS** Cage Doz. **39¢**

SWIFT **BEEF STEW** 2 24-Oz. Cans **79¢**

LIBBY **VIENNA SAUSAGE** 5 4-Oz. Cans **\$1**

CAMPBELL'S **TOMATO SOUP** No. 1 Can **10¢**

DEL MONTE **TOMATO JUICE** 3 46-Oz. Cans **\$1**

FRANCO AMERICAN — With Ground Beef **Macaroni or Spaghetti** 4 15-Oz. Cans **\$1**

Aspirin **BAYER** Regular 79¢ Size **48¢**

VALUABLE COUPON
FREE 100 S&H Green Stamps
WITH THIS COUPON AND THE PURCHASE OF \$10.00 OR MORE (LIMIT 1 PER CUSTOMER)
MUST BE ONE PURCHASE
COUPON EXPIRES FEBRUARY 13.
Cigarettes Excluded

CREAM PIES Mortons Frozen 3 14-Oz. Size **89¢**

U. S. NO. 1 RED **Potatoes** 10 Lb. Bag **79¢**

WE GIVE **ONIONS** White Pound **10¢**

S&H GREEN STAMPS **CARROTS** 2 1-Lb. Cello **19¢**

APPLES Extra Fancy Red Delicious Lb. **19¢**

PRICES GOOD THURS. FRI. & SATURDAY FEBRUARY 11-12-13.
RIDGECREST STORE
HOURS 8 a. m. to 8 p. m. DAILY.
CLOSED SUNDAYS.

Best in Bryan
ORR'S
Super Markets
2 CONVENIENT LOCATIONS
Downtown 200 E 24 Street Ridgcrest 3516 Texas Ave

Volume

Miss J like to hearts Womar educati

AS

Ur Co

AUSTI rally ur Arlington to "keep proposed colleges, for the s The A sented th a "Save has led t from the System. Jim J the "SOS ensured organiza his 30-m "He w higher e want. A of our c all colle same bo get awa Jeffery Conna oppositi put Ari Texas S Universi lege, th Texas

The p Vietn ment the a justifi we sl at the be so agre name agita