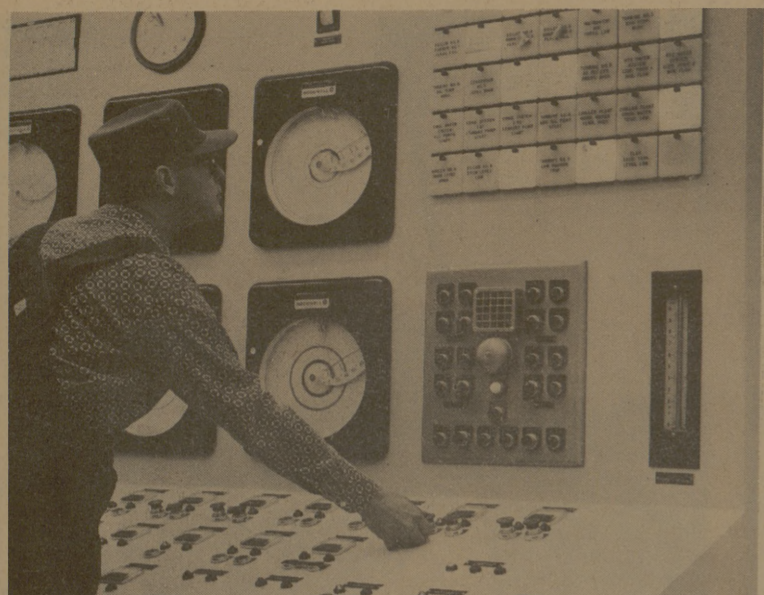


# Power Plant Doubles Turbine Generator Capacity



FRED L. HONEYCUTT ... at the control panel of new plant.

A&M will more than double its power plant capacity as a new 12,000 volt turbine generator unit goes into regular service early in February.

Completion of the major expansion to meet the steadily increasing needs of research projects, teaching and student housing was announced by Howard Badgett, director of the University Physical Plant Office.

The \$2,300,000-plus project begun in 1963 also involves major expansion of the central chilled water system at the heart of the ever-expanding air conditioning system.

Cost of the project was met from proceeds of the sale of revenue bonds.

"Research efforts in nuclear engineering and the plant sciences, to name but two examples, are requiring ever increasing amounts of electricity," Bad-

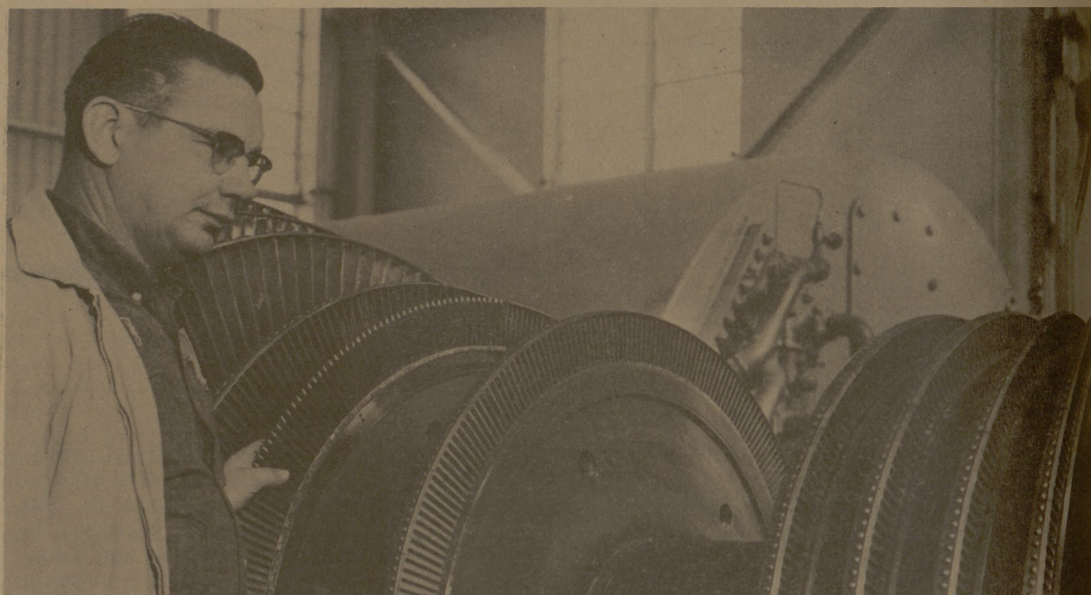
gett said.

A. P. Kasch and Sons of Big Spring held the major construction contracts. Westinghouse Electric Corp. built and installed the generator and related units under a \$426,000 contract.

The expansion boosts electric generating capacity from the old "nameplate generation capacity" of 9,750 kilowatts to more than 21,000.

The expanded central air conditioning system goes to virtually every classroom building on campus and to nine dormitories.

The power plant makes multiple use of the steam from its boilers, a combination, engineering studies show is highly efficient. After driving the turbine generators the exhaust steam is used in winter to heat campus buildings through a central hot water heating and distribution system.



INCREASED POWER FOR RESEARCH ... Glenn G. Eimann looks over new turbine.

## WE KEEP PRICES DOWN

# Weingarten's

PRICES GOOD THUR.-FRI.-SAT. JAN. 28-29-30. IN BRYAN ONLY. We Reserve The Right To Limit Quantities.

|                         |                              |               |                       |
|-------------------------|------------------------------|---------------|-----------------------|
| <b>J. W. COFFEE</b>     | With \$2.50 Purchase or More | Lb. Can       | <b>29<sup>c</sup></b> |
| <b>FLOUR GOLD MEDAL</b> |                              | 5 Lb. Bag     | <b>39<sup>c</sup></b> |
| <b>PEACHES</b>          | Food Club Sliced or Halves   | 2 1/2 Can     | <b>19<sup>c</sup></b> |
| <b>CHUNK TUNA</b>       | Chicken Of The Sea           | 1/2 Can       | <b>25<sup>c</sup></b> |
| <b>WESSON OIL</b>       |                              | 24-Oz. Bottle | <b>29<sup>c</sup></b> |

# FRYERS

FARMER BROWN U.S.D.A. Inspected

"Whole" Lb.

# 25<sup>c</sup>

CUT-UP LB. 29<sup>c</sup>



**FREE 100**

Big Bonus Stamps with Purchase of \$10.00 or More. Excluding Beer & Cigarettes. Coupon Expires Jan. 30.

|                      |               |           |                       |
|----------------------|---------------|-----------|-----------------------|
| <b>CROWN ROAST</b>   |               | Veal Lb.  | <b>39<sup>c</sup></b> |
| <b>D'ANJOU PEARS</b> |               | Each      | <b>5<sup>c</sup></b>  |
| <b>GRAPEFRUIT</b>    | Ruby Red      | Each      | <b>5<sup>c</sup></b>  |
| <b>CAN PICNIC</b>    | Morrell Pride | 3-Lb. Can | <b>\$1.59</b>         |
| <b>MELLORINE</b>     | Mello Freeze  | 1/2 Gals. | <b>33<sup>c</sup></b> |

## Through School By Magic

Students do many things to aid their college educations, but few work as magicians.

Such a unique young man is Jim Baldauf, a 21-year-old sophomore. It's nothing new with him. He's been serving up magic since grade school.

The slightly-built College Station resident took up magic as a hobby, developed further interest by reading books, and turned professional in his early teens to earn pocket money.

"I performed for church and civic groups, schools, and just about everywhere as an amateur," Baldauf recalls. "Happily, the calls didn't slow up much when I turned professional."

Baldauf was encouraged early by a friend of the Great Houdini, one of the best known magicians of all time. "He was a very old man, but he told me a lot of interesting stories about Houdini, and even gave me some letters from Houdini," Baldauf said.

A past member of the Inter-

national Brotherhood of Magicians and the Texas Association of Magicians, Baldauf says magicians are anxious to help newcomers.

Baldauf has a varied repertoire in his bag of tricks. He doesn't cut people in half or make young ladies float in the air.

"Most kids like rabbits out of the hat and things like that. They love magic. Adults seem to prefer

the slight of hand tricks," he commented.

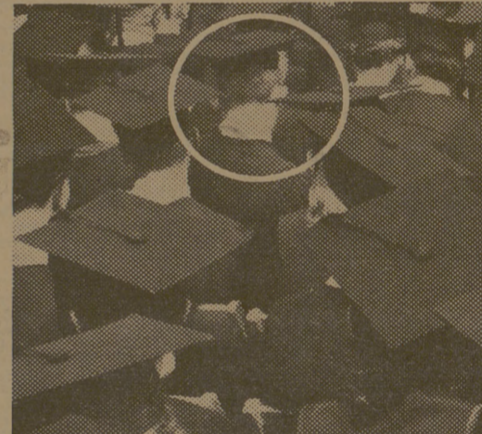
Audience participation is usually woven into Baldauf's performance but his wife, the former Margie Thames of College Station, doesn't participate. She elects to remain an observer.

When he's not doing feats of magic for fun and profit, Baldauf keeps in shape by manipulating a deck of cards. And although he has performed before audiences of hundreds all over Texas, he admits to being a trifle nervous before every performance.

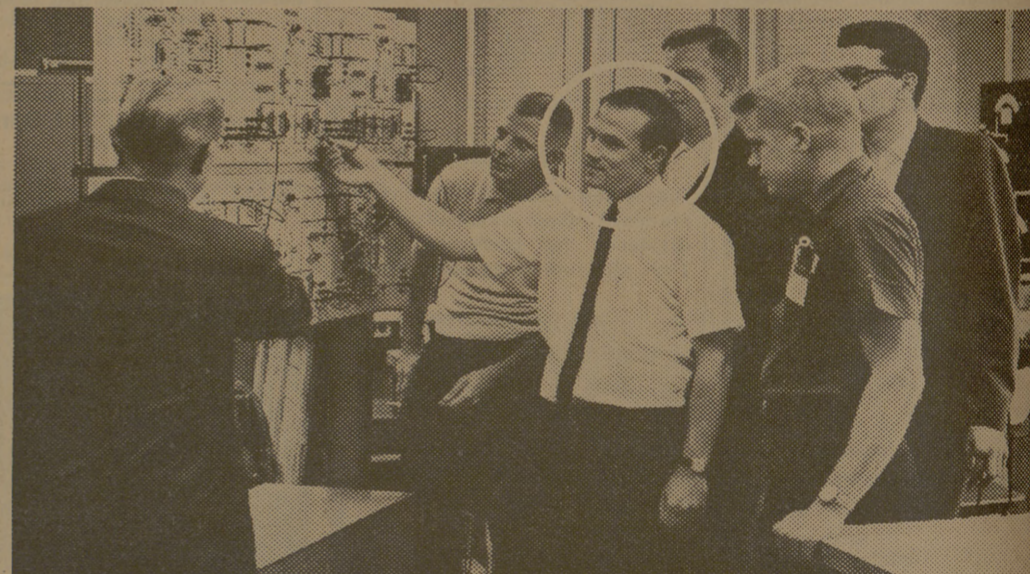
Magic hasn't hurt Baldauf's school work. He was a distinguished student as a freshman and is participating in the new honors program of the university. Currently, he's taking 19 hours of courses toward a major in English. He plans to carry a similar load next semester.

Baldauf doesn't plan a future as a magician but, hopes to help pay his way through graduate school with his magic wand.

BALDAUF



## Graduation was only the beginning of Jim Brown's education



### Because he joined Western Electric

Jim Brown, Northwestern University, '62, came with Western Electric because he had heard about the Company's concern for the continued development of its engineers after college graduation.

Jim has his degree in industrial engineering and is continuing to learn and grow in professional stature through Western Electric's Graduate Engineering Training Program. The objectives and educational philosophy of this Program are in the best of academic traditions, designed for both experienced and new engineers.

Like other Western Electric engineers, Jim started out in this Program with a six-week course to help in the transition from the classroom to industry. Since then, Jim Brown has continued to take courses that will help him keep up with the newest engineering techniques in communications.

This training, together with formal college engineering studies, has given Jim the ability to develop his talents to the fullest extent. His present responsibilities include the solution of engineering problems in the manufacture of moly-permalloy core rings, a component used to improve the quality of voice transmission.

If you set the highest standards for yourself, enjoy a challenge, and have the qualifications we're looking for — we want to talk to you! Opportunities exist now for electrical, mechanical and industrial engineers, and for physical science, liberal arts and business majors. For more information, get your copy of the Western Electric Career Opportunities booklet from your Placement Officer. And be sure to arrange for an interview when the Bell System recruiting team visits your campus.

**Western Electric** MANUFACTURING AND SUPPLY UNIT OF THE BELL SYSTEM  
AN EQUAL OPPORTUNITY EMPLOYER  
Principal manufacturing locations in 13 cities □ Operating centers in many of these same cities plus 36 others throughout the U.S. Engineering Research Center, Princeton, N.J. □ Teletype Corp., Skokie, Ill., Little Rock, Ark. □ General Headquarters, New York City

# TRADE WITH LOU — MOST AGGIES DO