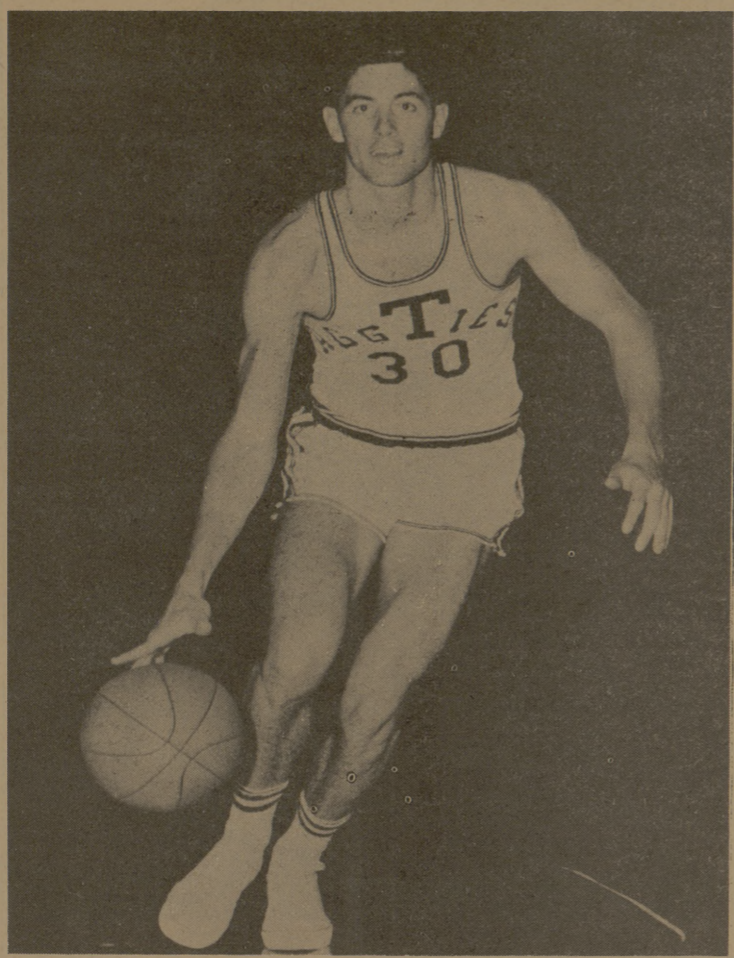




FROM THE

# Sidelines

By LANI PRESSWOOD



KEN NORMAN  
... ready for Mustangs.

In a recent column in The Dallas Times Herald, Blackie Sherrod passed along some reminiscences of former longtime official Abb Curtis. Several of them dealt with A&M and were just too good to pass up.

It was Abb's turn again and he recalled the famous 'hideout' plays of Homer Norton at Texas A&M. Norton gained a large rep as an inventor of trick plays when he was at Centenary. Especially did he favor the hideout play on the kickoff and he used many variations of it.

"When A&M received the kickoff, the runner would dash to the opposite side of the field from the Aggie bench. One Aggie would casually ignore the kickoff and wander over in front of the Aggie squad where his uniform would blend in with the subs on the sidelines. He would be careful to stay on-sides. On the first play, he would dash downfield and the Aggie passer would throw him a long shot. Usually he would be completely unnoticed and would be in the clear when the pass reached him. (Present rules outlaw the play. Everyone must line up within 15 yards of the ball.)"

"This was in 1947 when Bob Woodruff coached at Baylor and he went down to College Station to play the Aggies. Of course, he had heard about Norton's hideout play and he thought it was illegal," said Curtis. "Before the game he cornered me and said, 'If Norton pulls that hideout on me, I'm gonna send an assistant coach across the field and tackle the hideout before the ball is snapped! It's not a fair play and I'm not gonna stand for it! What are you going to do about that?' He was mad, even before the game. I told him I would deal with it properly if the occasion arose. "Before the kickoff, Woodruff and his assistant were looking across the field at every inch of ground in front of the Aggie bench. They were determined that Norton wasn't going to hoodwink them. But the hideout was Barney Welch, and he was on the Baylor side of the field! He wasn't 15 yards away from Woodruff himself. The Aggies ran the kickoff back to the 35-yard line and on the first play, Welch caught it all right, but it was so easy that Barney got to laughing. He laughed so hard that he fell down on the Baylor 40-yard line, with nobody around him. And the Aggies didn't score on it."

"Then a few weeks later, SMU went to College Station. Norton was going to try the same trick. He sent Welch around to the SMU side of the field but his timing was off. Welch got there before the Mustangs got out of their dressing room for the kickoff. So he hid in the midfield tunnel. The SMU team ran right past him on their way to the field. But Rusty Russell saw Welch in the tunnel.

"The SMU assistant then hollered at Curtis, who was refereeing." "They're hiding him in the tunnel, Abb!" yelled Rusty.

"There's nothing I can do about it," said Curtis. "He can be anywhere he wants before the kickoff."

"Well they're not gonna get away with it," Russell said. "I'll put Doak Walker on him."

"So Doak Walker was summoned, Welch was pointed out and Walker was instructed to stay with the Aggie wherever he went, tunnel, field or bathroom.

"Welch went out on the field shortly before the kickoff and Walker eyed him closely. The Aggies received and returned to the opposite side of the field. Walker remained wide, his eye still on Welch and the SMU bench shouting encouragement.

"So what did A&M do?" said Abb. "While everyone was watching Welch, the A&M passer threw to his other end and he dang near scored."

## Ara Parseghian Given New 5-Year Coaching Contract

(P) — Notre Dame University tore up Ara Parseghian's four-year football coaching contract and rewarded him with a new five-year pact Thursday after his sensational 1964 Irish debut.

It was not indicated whether any other benefits were included in the new contract.

Parseghian guided an Irish team which had a 2-7 record in 1963 to a 9-1 mark in the 1964 season.

The Irish won nine straight and then were edged by Southern California 20-17 in the season finale.

Parseghian was named college Coach of the Year by the Football Writers Association of America and the Irish won the football Hall of Fame's MacArthur Bowl as the season's outstanding team.

## Roundballers Meet SMU In Dallas Saturday Night

The Aggie Cagers, smarting from their first defeat in 1965 conference play, tackle Southern Methodist University Saturday at Dallas.

The Mustangs are 1-0 in SWC play as they downed Rice last Tuesday 66-62. SMU center Carroll Hooser put on an eight point scoring spurge with 10 minutes left to put the Mustangs on top to stay.

SMU is without last year's scoring ace Gene Elmore. They seem to be more balanced this year. Three players hit in double figures against the Owls. Hooser hit 22, Jim Smith added 10 and Bill Ward tossed in 11.

SMU's Head Coach Doc Hayes says the Mustangs' victory over the nationally ranked Saint Louis Bills was just the right tonic the cagers needed to add the magic ingredient of confidence to their attack.

SMU brings a 6-5 overall record into the game with wins over the Bills, Oklahoma City and Missouri as highlights.

The Mustangs have the sixth and seventh highest scorers in the

SWC starting Saturday night. They are Charles Ceasley averaging 13.5 points a game and Bill Ward averaging 12.9 points a contest.

The Ags will counter with the second, eight and ninth leading scorers in the SWC. John Beasley, Nen Norman and Paul Timmins.

The starting lineups:

A&M	Pos	SMU
Beasley	C	Hooser
Timmins	G	Ward
Stringfellow	G	Beasley
Norman	F	Smith
Gasway	K	Wendorf

## Conference Play Resumes

(P)—Southwest Conference competition resumes Saturday night.

The Baylor Bears, who now boast the best season record in the league, will be host to Rice at Waco Saturday night while Arkansas meets Texas Tech at Lubbock. In the only afternoon game Saturday, Texas Christian will be host to Texas at Fort Worth.

The Bears, with an 8-2 season mark, have averaged 89.3 points per game for the offense leadership in the conference. Arkansas has the best defensive record for the season, allowing their foes only an average of 66.1 points per game.

The rebound honors also go to the Bears, who have averaged 50.2 per game. Texas Tech leads in field goal accuracy with a .475 percentage while Rice, which hasn't been able to garner much glory otherwise, has the best performance at the free throw line with a .749 percentage.

A&M, now 7-3 have the second best season record in the conference, followed by Texas Tech with a 6-4 mark, Southern Methodist with a 6-5, Texas with a 5-5, Arkansas with 4-4, and Texas Christian with 3-7. Undisputed occupants of the loop cellar are the Rice Owls, who have suffered 10 defeats in 19 outings.

## The Church.. For a Fuller Life.. For You..

### CALENDAR OF CHURCH SERVICES

<b>OUR SAVIOUR'S LUTHERAN</b> 8:15 & 10:45 A.M.—The Church at Worship 9:30 A.M.—Bible Classes For All Holy Communion—First Sunday Each Month	<b>CHURCH OF THE NAZARENE</b> 9:45 A.M.—Sunday School 10:45 A.M.—Morning Worship 6:30 P.M.—Young People's Service 7:00 P.M.—Preaching Service	<b>ST. MARY'S CATHOLIC</b> Sunday Masses—7:30, 9:00 and 11:00
<b>CHRISTIAN SCIENCE SOCIETY</b> 9:30 A.M.—Sunday School 11:00 A.M.—Sunday Service 10:00 - 11:30 A.M.—Friday Reading Room 7:00-8:00 P.M.—Wed., Reading Room 8:00 P.M.—Wed. Evening Worship	<b>ST. THOMAS EPISCOPAL</b> 906 Jersey Street, So. Side of Campus Rector: William R. Oxley 8:00 & 9:15 A.M.—Sunday Service 9:15 A.M.—Nursery & Sunday School	<b>FAITH CHURCH UNITED CHURCH OF CHRIST</b> 9:15 A.M.—Sunday School 10:30 A.M.—Morning Worship 7:30 P.M.—Evening Service
<b>FIRST BAPTIST</b> 9:30 A.M.—Sunday School 10:45 A.M.—Morning Worship 6:10 P.M.—Training Union 7:20 P.M.—Evening Worship 6:30 P.M.—Choir Practice & Teachers' meetings (Wednesday) 7:30 P.M.—Midweek Services (Wednesday)	<b>UNIVERSITY LUTHERAN</b> (Missouri Synod) 10:00 A.M.—Bible Class 11:00 A.M.—Morning Worship Services at Presbyterian Student Center	<b>COLLEGE HEIGHTS ASSEMBLY OF GOD</b> 9:45 A.M.—Sunday School 11:00 A.M.—Morning Worship 6:30 P.M.—Young People's Service 7:30 P.M.—Evening Worship
<b>A&amp;M CHURCH OF CHRIST</b> 8:00 A.M.—Worship 9:00 A.M.—Bible Study 10:00 A.M.—Worship 5:15 P.M.—Young People's Class 6:00 P.M.—Worship 7:15 P.M.—Aggie Class 9:30 A.M.—Tuesday - Ladies Bible Class 7:15 P.M.—Wednesday - Bible Study	<b>UNITARIAN FELLOWSHIP</b> 305 Old Hwy. 6 S. 10:00 A.M.—Sunday School 7:45 P.M.—First four Sundays of each month — Fellowship Meeting.	<b>A&amp;M METHODIST</b> 9:45 A.M.—Sunday School 10:55 A.M.—Morning Worship 5:30 P.M.—Campus & Career Class 5:30 & 6:00 P.M.—MYF Meetings 7:00 P.M.—Evening Worship
	<b>SECOND BAPTIST</b> 710 Eisenhower 9:45 A.M.—Sunday School 11:00 A.M.—Church Service 6:30 P.M.—Training Union 7:30 P.M.—Church Service	<b>CHURCH OF JESUS CHRIST OF LATTER DAY SAINTS</b> 26th East and Coulter, Bryan 8:30 A.M.—Priesthood meeting 10:00 A.M.—Sunday School 6:30 P.M.—Sacrament Meeting
	<b>A&amp;M PRESBYTERIAN</b> 9:45 A.M.—Church School 11:00 A.M.—Morning Worship	<b>FIRST CHRISTIAN CHURCH</b> Homestead & Ennis 9:45 A.M.—Sunday School 10:50 A.M.—Morning Worship 5:30 P.M.—Young People

Hillier Funeral Home  
BRYAN, TEXAS  
502 West 26th St.  
PHONE TA 2-1572

Campus and Circle Theatres  
College Station

College Station's Own Banking Service  
University National Bank  
NORTH GATE

Sure Sign of Flavor  
ICE CREAM  
SANITARY Farm Dairies

Central Texas Hardware Co.  
BRYAN  
• HARDWARE  
• CHINAWARE  
• CRYSTAL  
• GIFTS

Simply stone and iron! Our photographer called this "Strength."  
Stone and iron are unyielding. But the greatest strength this world has known is a STRENGTH that yields:  
God possesses a resolute Will . . . yet He gives man freedom of will.  
God embodies all Power . . . but He hears and answers prayer.  
God breathes Holiness . . . yet He forgives men's sin.  
For God is Love . . . and love is a living Strength . . . that reaches, inspires, guides, protects, promises, fulfills.  
He was a descendant of the Ages of Stone and of Iron — that earnest seeker who cried, *The Lord is the strength of my life.*  
At church, next Sunday, you'll rub shoulders with countless others who look beyond walls and chains to find STRENGTH.

Copyright 1965 Keister Advertising Service, Inc., Strasburg, Va.

Sunday Psalms 1:1-6	Monday Psalms 84:1-5	Tuesday Micah 6:8	Wednesday Jeremiah 31:33-34	Thursday Romans 8:1-5	Friday Ephesians 6:7-9	Saturday Romans 8:35-39
---------------------	----------------------	-------------------	-----------------------------	-----------------------	------------------------	-------------------------

# 1964 - 1965

## TEXAS A&M UNIVERSITY

# DIRECTORY

of  
Offices - Staff - Students

Price \$1.00

### Now On SALE

At The Student Publications Office  
YMCA Bldg.

The Exchange Store  
"Serving Texas Aggies"

Bryan Building & Loan Association  
BRYAN

Lilly  
MELLORINE  
SHERBET  
ICE CREAM