

Something New In Smells; Aroma d' Peach Blossoms

An A&M University student is using his training in horticulture and organic chemistry to make perfume out of peach blossoms.

He is Billy R. Loveless, junior food technology major from Jacksonville, Ark.

Billy is a member of Dr. E. E. Burns' Advanced Fruit and Vegetable Processing course. The peach flower perfume project is a class assignment.

Burns says the idea is to demonstrate how new products can sometimes be developed from common materials.

Peach flowers, he adds, don't have anything special over other flowers. It's just that a whole peach orchard is across the road from the laboratory, and the blossoms have been handy.

Almost any kind of flower can be utilized for perfume, Burns said. Loveless will try honeysuckle after he runs out of peach blossoms.

The student makes the perfume in small amounts in two ways: steam distillation and the solvent method to remove the "essence of oil."

With the steam system, petals are simply put into water and boiled. Vapors are condensed, producing the sweet smelling oil.

The solvent method is the more sophisticated. Petals are mixed with petroleum ether, which combines with the essence of oil. The volatile substance is distilled, allowing the ether to pass off and leaving the oil.

Material Studied For Moon Landing

Sometime in the future—perhaps by 1970—an American space vehicle will plummet through the moon's atmosphere for a lunar landing.

The softness of that landing will depend upon a multitude of factors—but basically how much the vehicle can be slowed considering its weight and speed.

A "shock absorber" technique is the subject of a long-range study by students and professors at A&M University who are testing light-weight materials capable of controlling the energy created by spaceships rocketed through space.

Four graduate aerospace engineering students, all candidates for master's degrees this month, have tackled different phases of the project.

They include Armand J. Chaput, who won top honors with his research report at a Southwest meeting of the American Institute of Aeronautics and Astronautics recently. Chaput is an Omaha, Neb., resident. The others are Sam Herrmann of Allentown, Pa., William J. Bland of Washington, D. C., and Lynn Harding of Dallas.

Chaput worked with brittle pieces of tubing that crumble under the heavy impact of such things as space vehicles. As the cylinders are crushed, the vehicle is slowed.

Another technique under study involves use of aluminum tubing that folds like an accordion when the weight comes down.

S-shaped pieces of metal that work on the same principle as the automobile bumper frame support is another technique used. These supports buckle under extreme force.

Another promising material is aluminum "honeycomb" that provides a cushion for heavy objects. Problems associated with the project are varied.

Whatever material is used, it must be light and perform exactly the same way under different design conditions in order to be reliable, commented Herrmann.

All the researchers agree that current findings are valuable, although additional study is needed. Their reports will be turned over to the project sponsor, National Aeronautics and Space Administration.

"It may be that a combination of all the techniques we've studied will be developed as the best solution," Bland said.

Although the project is centered around space-related problems, the impact study also can be adapted to more down-to-earth situations.

For instance, elevators, automobiles and cargo dropped from airplanes are other possible users of the "shock absorbers."

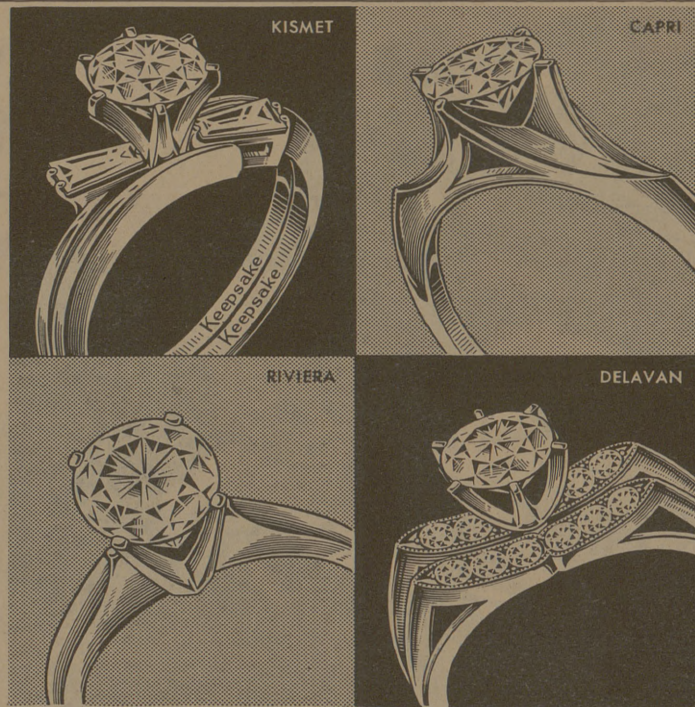
But the study itself stems from another A&M project conducted by the university's Activation Analysis Research Laboratory. It involves landing a compact gadget, capable of analyzing the moon's surface once delivered.

Scientist Says Summertime Is Best For Eating Oysters

This may come as a shock to many Americans. The 'myth' or belief that oysters shouldn't be eaten in any month that doesn't have an "R" in its name is fiction, says Wallace Klussmann, wildlife specialist for the Texas Agricultural Extension Service.

A recent research report released by the U. S. Department of Interior's Bureau of Commercial Fisheries shows the 'myth' or belief has no scientific basis. In fact, May or June are cited as the best two months for dining on the mollusks.

Oysters are fatter and taste better in the spring because they are storing glycogen — an animal starch—in preparation for the summer spawning season, says Klussmann. During the summer and their nectar watery and their early fall, oysters become thinner, flavor declines, he explains.



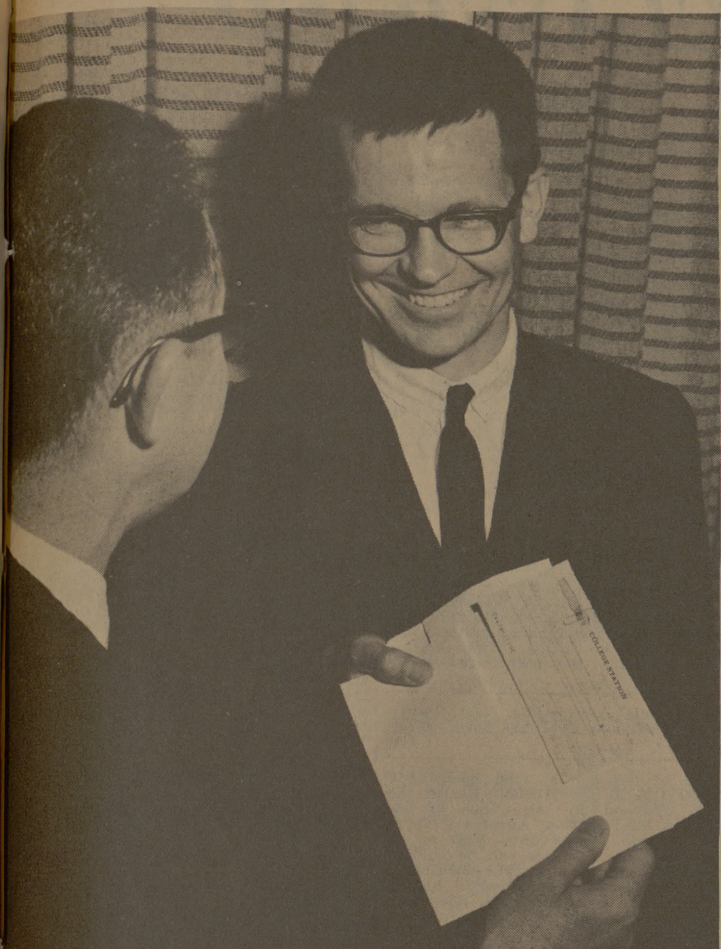
THE ENGAGEMENT RING WITH THE PERFECT CENTER DIAMOND

Keepsake

True artistry is expressed in the brilliant fashion styling of every Keepsake diamond engagement ring. Each setting is a masterpiece of design, reflecting the full brilliance and beauty of the center diamond . . . a perfect gem of flawless clarity, fine color and meticulous modern cut.

The name, Keepsake, in the ring and on the tag is your assurance of fine quality and lasting satisfaction. Your very personal Keepsake diamond ring is awaiting your selection at your Keepsake Jeweler's store. Find him in the yellow pages. Prices from \$100 to \$2500. Rings enlarged to show beauty of detail. Trade-mark registered.

HOW TO PLAN YOUR ENGAGEMENT AND WEDDING. Please send two new booklets, "How to Plan Your Engagement and Wedding" and "Choosing Your Diamond Rings," both for only 25c. Also send special offer of beautiful 44 page Bride's Book. Includes form for name, address, city, state.



Sigma Xi Award

Dr. Dilford C. Carter, right, of the Department of Wildlife, receives a \$50 check from Dr. R. J. Baldauf, immediate past president of Sigma Xi Society. Sigma Xi is a professional science group. Paul D. Cratin of Tulsa, Okla., a former student now associated with a petroleum research firm, was the other winner.

\$2.5 Million Ready For BU

HOUSTON (AP) — Baylor University was told Thursday that half of the funds for a \$5 million building program on the campus of the Waco school are on hand or in sight. The trustees gave a go-ahead signal to its development committee to raise the rest of the money needed to complete the program. All of the new construction is to be on the main university campus.

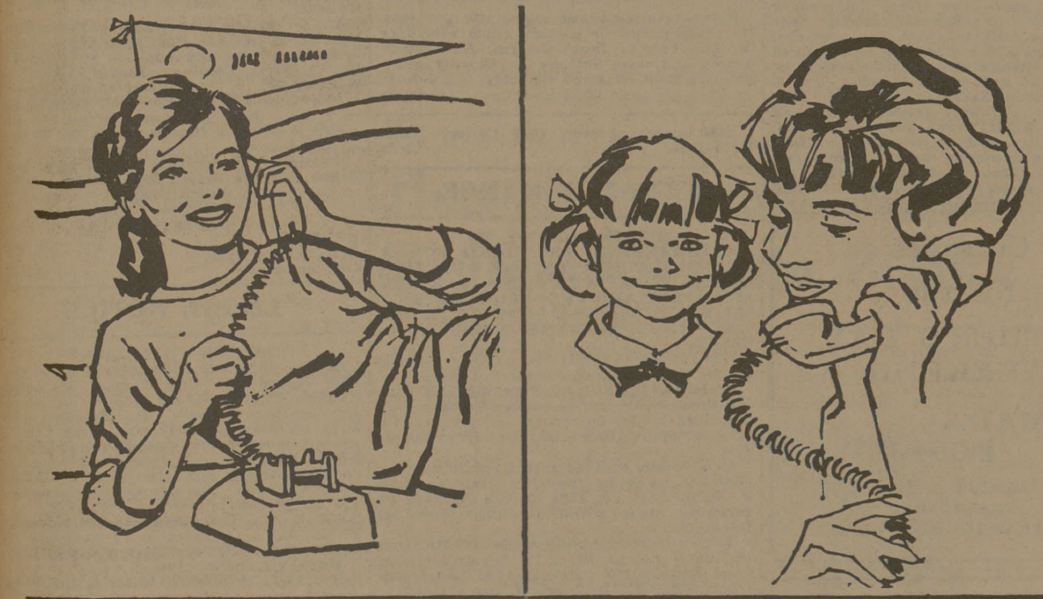
Earl C. Hankamer of Houston, vice chairman of the board, presided over the meeting held at the Baylor College of Medicine in the Texas Medical Center.

Projects included in the \$5 million program include a \$2.5 million library, a \$1.5 million science building, and a new wing for the 2,500 seat Waco Hall for the School of Music.

New, Rebuilt LEONARD'S AUTO SUPPLY

AGGIES: Come to Leonard's for your discount where your business is appreciated. Automatic transmission fluid 25¢ — Rebuilt Spark Plugs 25¢ Chev., Ford brake shoes (2-wheel) \$2.75 — Filters Save 50% 6 Volt Batteries as low as \$8.95

Look For LEONARD'S AUTO SUPPLY Highway 21 & Sims. TA 2-4195



The Family Hour Begins at 9

Keeping in touch by long distance has never cost less than it does after 9 P.M. You can call anywhere in the U.S. for \$1.00 or less. And with convenient Direct Distance Dialing it's easier than ever. So if you're away on business, away at school or just lonely for the sound of a loved one's voice, go ahead—enjoy yourself—when the low cost family hour begins at 9.

*station-to-station, plus federal excise tax

Southwestern States Telephone

The Church.. For a Fuller Life.. For You..



Hillier Funeral Home BRYAN, TEXAS 502 West 26th St. PHONE TA 2-1572

STUDENT PUBLICATION

Campus and Circle Theatres College Station

CALENDAR OF CHURCH SERVICES

- ST. MARY'S CATHOLIC: Sunday Masses—7:30, 9:00 and 11:00. OUR SAVIOUR'S LUTHERAN: 8:15 & 10:45 A.M.—The Church at Worship. CHRISTIAN SCIENCE SOCIETY: 9:30 A.M.—Sunday School. A&M CHURCH OF CHRIST: 8:00 A.M.—Worship. UNIVERSITY LUTHERAN (Missouri Synod): 10:00 A.M.—Bible Class. CHURCH OF THE NAZARENE: 9:45 A.M.—Sunday School. FIRST BAPTIST: 9:30 A.M.—Sunday School. ST. THOMAS EPISCOPAL: Sunday Services: 8:00 A.M., 9:15 A.M., 11:00 A.M. SECOND BAPTIST: 7:10 Eisenhower. FAITH CHURCH UNITED CHURCH OF CHRIST: 9:15 A.M.—Sunday School. COLLEGE HEIGHTS ASSEMBLY OF GOD: 9:45 A.M.—Sunday School. A&M METHODIST: 9:45 A.M.—Sunday School. UNITARIAN FELLOWSHIP: 10:00 A.M.—Sunday School. CHURCH OF JESUS CHRIST OF LATTER DAY SAINTS: 25th East and Coulter, Bryan.

College Station's Own Banking Service

University National Bank NORTH GATE

Central Texas Hardware Co. BRYAN

- HARDWARE CHINAWARE CRYSTAL GIFTS



SANITARY Farm Dairies

The Exchange Store "Serving Texas Aggies"

Bryan Building & Loan Association BRYAN

Lilly ICE CREAM MELLORINE SHERBET