

"Sports Car Center"
Dealers for
Renault-Peugeot
&
British Motor Cars
Sales—Parts—Service
"We Service All Foreign Cars"
1422 Texas Ave. TA 2-4517

Moore Has Reply For No. 1 Problem

By JIM BUTLER
If the great philosophers of the past were still alive and sitting

under yum-yum trees contemplating whatever philosophers contemplate under yum-yum trees, chances are they would be asking "How can Texas be defeated?"

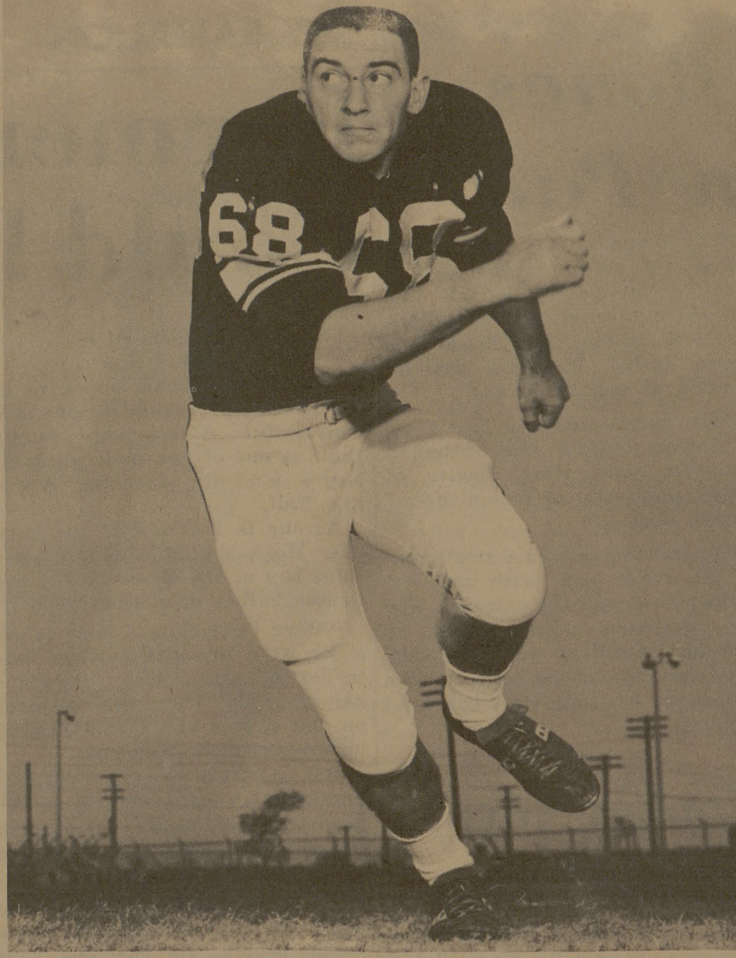
A&M's junior guard Ronney Moore has the answer and Aggies everywhere hope he is right.

"Beat them at their own game," Moore says conclusively "Just blow them out of the tub."

Moore is the latest Aggie hero and faces the monumental task of blowing UT's all-America candidate Scott Appleton out of the tub. "Appleton has a lot of good moves," Moore says. "He's a lot quicker than he looks."

The all-stater from Brownwood has started every game for Coach Hank Foldberg's crew and has improved steadily, playing his best game in A&M's 13-6 upset win last Saturday. A pro scout in the press box said Moore was the finest lineman on the field.

Moore's 6-1, 208-pound frame was in on 10 tackles against the Owls and Rice Coach Jess Neely shook his hand after the game.



DRAWS TOUGH ASSIGNMENT
Guard Ronney Moore must handle Texas' Scott Appleton

Austin Finale Set For Fish

By MARVIN SCHULTZ
Battalion Asst. Sports Editor

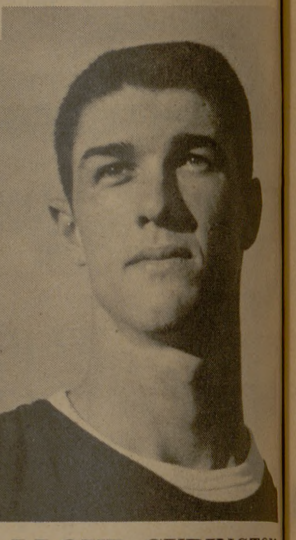
Launching a formidable array of weapons, the Austin Fish invade Austin Saturday afternoon in the season finale with the Texas Shorthorns. Looking for its fourth straight win of the 1963 campaign the running attack will once again be centered around quarterback Harry Ledbetter, left halfback Lloyd Curington, and fullback Joe Weiss.

Curington continues to lead the club in rushing pace, racking up 166 yards for 34 runs with the ball. Fullback Joe Weiss follows with 118 in 25 attempts for an average compared to Curington's 4.9 leading mark.

The Fish have rolled to impressive victories over Baylor, Texas Tech and the Rice Owlets after losing the season opener to TCU, 10-0.

A FIRED UP offense met the Baylor Cubs in the second outing of the year and before the night was over the Fish had poured over four touchdowns with a 27-20 win. This game like the ones that were to follow highlighted a scoring punch which consisted of a collective effort on all the boys' part. No less than four different runners carried the pigskin over the goal line against the Cubs. The three W's, Worst, Weiss, and Westfield accompanied Ledbetter on touchdown runs.

John Worst quarterback the Fish to a 6-0 win over Texas Tech in San Angelo when he heaved a 17-



LLOYD CURINGTON

yarder to end Jerry Cox who was waiting all alone in the end zone. LLOYD CURINGTON led the Fish to a 19-6 margin over the Rice Owlets, scoring two touchdowns on runs of three yards each. Ledbetter passed to end Robert Plsek for the other score. In the eight touchdowns scored against the opposition, seven men crossed the goal line. Only Curington scored more than one touchdown.

In the passing department, Quarterback Harry Ledbetter hit 13 of 21 passes for 142 yards with no interceptions. Right on James Wallace has caught the aerials for 52 yards and Jerry Cox has hauled in three of 46 net touchdowns.

Waitresses at the A&M Donut Shop are: Loyal, Helpful, Friendly, Courteous, Cheerful, Thrifty, Clean, and Boy Can They Serve Coffee!

Of course if they're real busy you may have to wait a couple minutes but don't worry they'll get to you with that coffee and donuts or lunches or what ever you order. If you're really in a hurry why not phone in your order ahead of time?

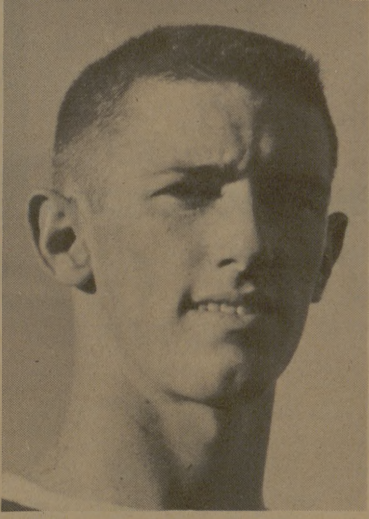
A&M DONUT SHOP
At The North Gate VI 6-7023

The Church.. For a Fuller Life.. For You..

CALENDAR OF CHURCH SERVICES			
OUR SAVIOUR'S LUTHERAN 8:15 & 10:45 A.M.—The Church at Worship 9:30 A.M.—Bible Classes For All Holy Communion—First Sunday Each Month CHRISTIAN SCIENCE SOCIETY 9:30 A.M.—Sunday School 11:00 A.M.—Sunday Service 10:00 - 11:30 A.M.—Friday Reading Room 7:00-8:00 P.M.—Wed., Reading Room 8:00 P.M.—Wed. Evening Worship	CHURCH OF THE NAZARENE 9:45 A.M.—Sunday School 10:45 A.M.—Morning Worship 6:30 P.M.—Young People's Service 7:00 P.M.—Preaching Service	FAITH CHURCH UNITED CHURCH OF CHRIST 9:15 A.M.—Sunday School 10:30 A.M.—Morning Worship 7:30 P.M.—Evening Service	COLLEGE HEIGHTS ASSEMBLY OF GOD 9:45 A.M.—Sunday School 11:00 A.M.—Morning Worship 6:30 P.M.—Young People's Service 7:30 P.M.—Evening Worship
A&M CHURCH OF CHRIST 8:00 A.M.—Worship 9:00 A.M.—Bible Study 10:00 A.M.—Worship 5:15 P.M.—Young People's Class 6:00 P.M.—Worship 7:15 P.M.—Aggie Class 9:30 A.M.—Tuesday - Ladies Bible Class 7:15 P.M.—Wednesday - Bible Study	ST. THOMAS EPISCOPAL Sundays 8:00 A.M. & 9:15 A.M. Morning Prayer 9:15 A.M. Church School & Nursery	UNIVERSITY LUTHERAN 10:00 A.M.—Bible Class 11:00 A.M.—Morning Worship Wednesday 7:15 P.M.—Gamma Delta	CHURCH OF JESUS CHRIST OF LATTER DAY SAINTS 26th East and Coulter, Bryan 8:30 A.M.—Priesthood meeting 10:00 A.M.—Sunday School 8:30 P.M.—Sacrament Meeting
UNIVERSITY LUTHERAN (Missouri Synod) 10:00 A.M.—Bible Class 11:00 A.M.—Morning Worship Wednesday 7:15 P.M.—Gamma Delta	FIRST BAPTIST 9:30 A.M.—Sunday School 10:45 A.M.—Morning Worship 6:10 P.M.—Training Union 7:20 P.M.—Evening Worship 7:15 P.M.—Wednesday Choir Rehearsal & Bible Study 8:00 P.M.—Wednesday Prayer Meeting	ST. MARY'S CATHOLIC Sunday Masses—7:30, 9:00 and 11:00	CHURCH OF JESUS CHRIST OF LATTER DAY SAINTS 26th East and Coulter, Bryan 8:30 A.M.—Priesthood meeting 10:00 A.M.—Sunday School 8:30 P.M.—Sacrament Meeting

Schoolboy Grid Playoffs Start

By The Associated Press
While the state's major schoolboy teams mop up their district races for next week's playoff campaign, Class AA Rockdale takes on Taylor Friday night as the drive for Texas high school championships begins.
Rockdale is heavily favored having already beaten Taylor in the regular season.
In another important contest, undefeated, untied Goldthwaite takes on Albany, top-rated in Class A.
Rockdale, runnerup in the 1962 season, is expected to go through the bidistrict round easy. But Albany is probably facing a much tougher task against Goldthwaite.



JOHN POSS

Hillier Funeral Home
BRYAN, TEXAS
502 West 26th St.
PHONE TA 2-1572

Campus and Circle Theatres
College Station

College Station's Own Banking Service
University National Bank
NORTH GATE

Sure Sign of Flavor
SANITARY Farm Dairies

Central Texas Hardware Co.
BRYAN
• HARDWARE
• CHINAWARE
• CRYSTAL
• GIFTS

the Secret of **THANKSGIVING**

ALL FOR THE CHURCH THE CHURCH FOR ALL

Does the "horn of plenty" make us thankful? We do not become thankful by our abundance. The spoiled child lavished with gifts is not thankful. It is not the horn of plenty, but the bigness of our heart that makes us thankful. The blessings God gives are infinite, but we must have the capacity to receive. Like a child who carries a bucket of water from the sea, we can only carry as many blessings as our heart will hold.

The capacity to receive comes through worship and prayer. We go into the presence of God and think deeply about our life. Understanding is awakened. With new eyes, we see our blessings and are grateful. We kneel poor, and rise rich.

Thanksgiving Day brings us a special opportunity for worship and prayer. Isn't this why we want to be in Church with our family? Here we discover the secret of thanksgiving.

Copyright 1963, Keister Advertising Service, Inc., Strasburg, Va.

Sunday	Monday	Tuesday	Wednesday	Thursday	Friday	Saturday
II Chronicles	Psalms	Psalms	Proverbs	Isaiah	I Thessalonians	James
31:2-10	86:1-13	96:1-13	28:14-28	30:18-26	3:6-13	4:1-10

The Exchange Store
"Serving Texas Aggies"

Bryan Building & Loan Association
BRYAN

Lilly
ICE CREAM
MELLORINE
SHERBET

MORE KINDS OF CHEVROLETS THAN EVER BEFORE!

CHEVROLET

JET-SMOOTH LUXURY CHEVROLET 15 models. Four series. One brand-new series—the Impala Super Sports. More luxury, too. Even the Biscaynes are now fully carpeted. There's seven different engines' worth of power—140 hp to 425 hp (optional at extra cost). It's a matter of knowing if you'd like your luxury on the gentle side or on the other side.
Model shown: Impala Sport Coupe

TOTALLY NEW CHEVELLE! 11 models. Three series. An entirely new line of cars sized a foot shorter than the big cars, so you get the handling ease of smaller cars. But don't sell it short! Chevelle gives you generous passenger and luggage room. Engine choice: 120 to extra-cost 220 hp.
Model shown: Malibu Sport Coupe

NEW CHEVY II Six models. Two series—Nova and Chevy II 100. Both now offer an extra-cost 195-hp V8 or a 155-hp six, to give you more Chevy II power than ever before. Match this added power with Chevy II thrift, and you can see why Chevy II will be harder than ever to keep up with this year.
Model shown: Nova 2-Door Sedan

NEW CORVAIR Seven models in four series. Two Greenbriers. A new standard 95-hp engine (nearly 19% livelier). An extra-cost 110-hp engine on all Corvairs and a 150-hp Turbo-charged engine in the Monza Spyder. Styling? Never been cleaner. Interior? Never been brighter. Fun to drive? Never been more so.
Model shown: Monza Club Coupe

NEW CORVETTE Two models—the Sport Coupe with a new one-piece rear window plus improved interior ventilation, and the dashing Sting Ray Convertible. Both boast smoother rides, improved sound insulation. Both go with four big V8's, including a new extra-cost 375-hp engine with Fuel Injection.
Model shown: Sport Coupe

Ask about a SMILE-MILE Ride and the Chevrolet Song Book at your Chevrolet dealer's