

AMONG THE PROFS

# Plant Ecologist, Instructor Joins Range And Forestry

Dr. Jimmie Dale Dodd, formerly of North Dakota State University, has joined the A&M Department of Range and Forestry as an assistant professor.

Dr. Charles Leinweber, department head, said Dodd will spend two-thirds of his time in basic plant physiology and ecology and one-third in teaching range management. The scientist will conduct special research on cactus.

Dodd received AB and MS degrees at Fort Hays Kansas State College in 1956 and 1957. His doctorate in plant ecology came in 1960 at the University of Saskatchewan.

He taught in the Division of Forestry at Arizona State University from 1960-61, and taught botany and ecology at North Dakota State University from 1961 until coming to A&M. The ecologist has published four technical papers and two theses.

Dr. C. W. Livingston, Jr., of Sonora has joined the School of Veterinary Medicine as an assistant professor in the Department of Veterinary Microbiology.

Dean A. A. Price said Livingston will be primarily engaged in research, working on ornithosis and equine infectious anemia. He also will be project leader on research designed to develop tissue culture cytofluorescent antibodies and other research on diagnostic techniques.

W. D. Franklin, assistant professor in agricultural economics and sociology, has accepted a position as a teacher of economics and business administration at Upper Iowa University. He will leave for Iowa in August.

Franklin recently earned his master's degree in agricultural eco-

nomics from A&M. He now is working on a research project concerning the opportunities in farm recreational income producing alternatives.

Dr. E. E. Burns, food technologist in the A&M Soil and Crop Science Department, has been appointed to the Graduate Awards Jury of the Institute of Food Technologists.

The jury is a seven-member group which considers applications for IFT awards to outstanding graduate students studying food technology in the nation's colleges and universities.

The IFT is a professional society of food technologists, with offices in Chicago.

Burns is chairman of the Texas Section of the Institute.



Miss Universe Girls Enjoy The Surf

Three Miss Universe Beauty Pageant girls enjoy a romp in the surf at Miami Beach, the left they are Miss Japan, Norika Ando; Miss France, Monique Lemaire; and Miss Fla., during a picture taking session. From Korea, Kim Myung-Ja. (AP Wirephoto)

## Wilson, McKelvain Attend FFA Meet

Bill Wilson and Burrell McKelvain will represent the A&M College Chapter at the Future Farmers of America convention in Dallas this week. Bill Irick, college FFA advisor, also attended the three-day meeting that opened Tuesday.

Other staff members from the Department of Agricultural Education at A&M participating in the convention are Dr. Earl H. Knebel, department head, and John Holm, associate professor. Holm is convention publicity chairman.

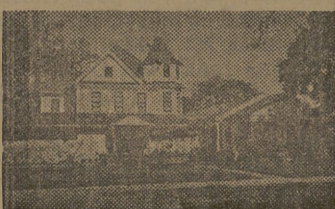
Delegates from more than 900 school FFA chapters were expected at the convention.

The convention highlight will be awarding of Lone Star Farm-ers to 800 Future Farmers.

# The Church.. For a Fuller Life.. For You..

## CALENDAR OF CHURCH SERVICES

<b>A&amp;M CHRISTIAN</b> 9:45 A.M.—Coffee Time 10:00 A.M.—Church Services 10:15 A.M.—Church School	<b>CHURCH OF THE NAZARENE</b> 9:45 A.M.—Sunday School 10:45 A.M.—Morning Worship 8:30 P.M.—Young People's Service 7:00 P.M.—Prayer Service	<b>FAITH CHURCH</b> 9:45 A.M.—Sunday School 10:30 A.M.—Morning Worship 7:30 P.M.—Evening Service
<b>OUR SAVIOUR'S LUTHERAN</b> 10:15 & 10:45 A.M.—The Church at Worship 10:00 A.M.—Bible Classes For All Ages 10:30 A.M.—First Sunday Each Month	<b>ST. THOMAS EPISCOPAL</b> Sundays 8:00 A.M.—Holy Communion; 9:15 A.M.—Family Service & Church School; 11:00 A.M.—Holy Communion 1st & 3rd Sundays, Morning Prayer 2nd & 4th Sundays; 7:30 P.M. Evensong. Wednesdays 8:30 & 10:00 A.M.—Holy Communion with Laying on of Hands Saints Days 10:00 A.M.—Holy Communion Wednesdays 7:10 P.M.—Cantabury; 8:30 P.M. Adult Bible Classes	<b>COLLEGE HEIGHTS ASSEMBLY OF GOD</b> 9:45 A.M.—Sunday School 11:00 A.M.—Morning Worship 6:30 P.M.—Young People's Service 7:30 P.M.—Evening Worship
<b>CHRISTIAN SCIENCE SOCIETY</b> 10:00 A.M.—Sunday School 10:00 A.M.—Sunday Service 10:00-11:30 A.M.—Friday Reading Room 10:00-3:00 P.M.—Wed. Reading Room 10:00 P.M.—Wed. Evening Worship	<b>FIRST BAPTIST</b> 9:30 A.M.—Sunday School 10:45 A.M.—Morning Worship 8:10 P.M.—Prayer Union 7:30 P.M.—Evening Worship 7:15 P.M.—Wednesday Choir Rehearsal & Bible Study 8:00 P.M.—Wednesday Prayer Meeting	<b>A&amp;M METHODIST</b> 9:45 A.M.—Sunday School 10:55 A.M.—Morning Worship 5:30 & 6:00 P.M.—MYF Meetings 7:00 P.M.—Evening Worship
<b>A&amp;M CHURCH OF CHRIST</b> 9:45 A.M.—Bible Classes 10:00 A.M.—Morning Worship 10:15 P.M.—Bible Class 7:30 P.M.—Evening Service	<b>SECOND BAPTIST</b> 710 Eisenhower 9:45 A.M.—Sunday School 11:00 A.M.—Church Service 8:30 P.M.—Training Union 7:30 P.M.—Church Service	<b>UNITARIAN FELLOWSHIP</b> 4:00-5:30 P.M.—Friday School, YMCA 8:00 P.M.—First four Sundays of each month—Fellowship Meeting, Call VI 6-8588 for further information.
<b>A&amp;M LUTHERAN</b> (Missouri Synod) 10:00 A.M.—Aggie Bible Class 10:00 A.M.—Morning Worship Wednesday 7:15 P.M.—Gamma Delta	<b>CHURCH OF JESUS CHRIST OF LATTER DAY SAINTS</b> 26th East and Coulter, Bryan 8:30 A.M.—Priesthood meeting 10:00 A.M.—Sunday School 6:30 P.M.—Sacrament Meeting	<b>A&amp;M PRESBYTERIAN</b> 9:45 A.M.—Church School 11:00 A.M.—Morning Worship
<b>ST. MARY'S CATHOLIC</b> Sunday Masses—7:30, 9:00 and 11:00		



Hillier Funeral Home

BRYAN, TEXAS  
502 West 26th St.  
PHONE TA 2-1572

## Campus and Circle Theatres

College Station

College Station's Own Banking Service

## College Station State Bank

NORTH GATE

## Central Texas Hardware Co.

BRYAN

- HARDWARE
- CHINAWARE
- CRYSTAL
- GIFTS

Sure Sign of Flavor



SANITARY Farm Dairies



ICE CREAM  
MELLORINE  
SHERBET

# FANTASTIC!!

OUR FOOD VALUES!

We Reserve The Right To Limit All Sales.

- GROCERIES -		- FROZEN FOOD -	
Snowdrift		Swansons—8-Oz.	
SHORTENING .....	3-Lbs. 59c	Meat Pies .....	4 For 79c
Hunts—No. 2 1/2 Cans		Swansons	
Whole Spiced Peaches ..	2 For 49c	T. V. Dinners .....	Each 55c
Hunts—No. 2 1/2 Cans		Tennessee—10-Oz.	
Whole Apricots .....	2 For 49c	Sliced Strawberries .....	2 For 39c
Hunts—300 Size Cans		Coastal—10-Oz.	
Peach Halves .....	3 For 55c	Breaded Shrimp .....	49c
Nabisco—12-Oz.			
Ritz Crackers .....	Pkg. 30c		
Royal—6-Oz.			
Gelatin Desert .....	2 For 29c		
Libbys—29-Oz. Cans			
Pineapple-Grapefruit Drink			
2 For .....	49c		
Libbys—303 Cans			
Garden Green Peas .....	2 For 35c		
Folgers			
COFFEE .....	1-Lb. 65c		
Folgers—6-Oz.			
Instant Coffee .....	Jar 79c		
Miracle Whip			
Salad Dressing .....	Quart 49c		
Oscar Mayer—12-Oz.			
Luncheon Meat .....	Can 39c		
Hersheys—16-Oz.			
Chocolate Syrup .....	2 For 45c		
Swank—14-Oz. Bottles			
CATSUP .....	Each 15c		

SPECIALS GOOD THURSDAY AFTERNOON, FRIDAY, AND SATURDAY, JULY 18 - 19 - 20.

# CHARLIE'S FOOD MARKET

NORTH GATE —WE DELIVER— COLLEGE STATION



## STEPS

You can't see any farther ahead from the second step than you could from the first. But you know you are closer to the top. And that very aptly describes one aspect of man's quest for spiritual understanding. ONE SUNDAY IN CHURCH DOESN'T MAKE US CHRISTIANS. And sometimes a month of Sundays finds us still struggling with doubts and wrestling with temptations. Prayers don't always seem to have been answered. And parts of the Bible may constantly baffle us. But the truth of the matter is that every spiritual step we take is exactly that — a step. It may leave our perspective unchanged for the moment. But it is bringing us closer to that higher level of life from which man's vision enlarges. Until we reach life's spiritual crest, the most important step is always the NEXT. Join the millions who'll climb a little closer to the summit Sunday.

Copyright 1963, Keister Advertising Service, Inc., Strasburg, Va.

Sunday	Monday	Tuesday	Wednesday	Thursday	Friday	Saturday
Psalms 63:1-4	Lamentations 3:22-27	Matthew 6:7-15	I Corinthians 10:6-13	Hebrews 6:9-15	James 1:16-21	II Peter 3:14-18

The Exchange Store  
"Serving Texas Aggies"

Bryan Building & Loan Association  
BRYAN