

## Two Schools Move To State System

**SERVING BRYAN and COLLEGE STATION**

**SAM HOUSTON ZEPHYR**  
Schedule Change  
Effective April 26  
Lv. N. Zulch 10:08 a.m.  
Ar. Dallas . . . 12:47 p.m.

Lv. N. Zulch . 7:31 p.m.  
Ar. Houston . 9:25 p.m.

**FORT WORTH AND DENVER RAILWAY**  
N. L. CRYAR, Agent  
EX 9-2151 • NORTH ZULCH

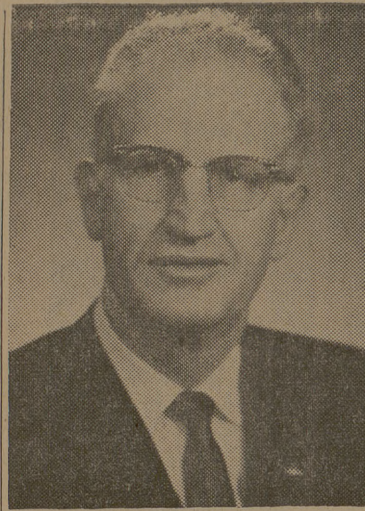
AUSTIN (AP)—A House committee Wednesday night approved for floor debate next week proposal to add two more state-supported schools to Texas' higher education system.

The State Affairs Committee approved proposals to make San Angelo College, now a two-year school, and Pan American College at Edinburg, a four-year school, both state supported. San Angelo

would become a four-year school. The bills, both of which have passed the Senate, would add the new schools in 1965.

The state now has 19 state-supported colleges, with the University of Houston scheduled to come into the system in September.

The college bills will come up for House debate Wednesday. Pan American's name would stay the same under the measures. The San Angelo school would be called Angelo State College.



DR. C. F. MATHEWS

## School Workshop Set For Monday

School board members and superintendents from a 17-county area will attend a regional workshop here Monday.

Dr. Charles F. Mathews, superintendent of schools at Longview and past president of the Texas Association of School Administrators, will be the principal speaker.

Registration at 3 p.m. will begin the meeting in the Memorial Student Center. The workshop will end about 9:30 p.m.

Workshop director will be J. B. Hervey, president of the A&M Consolidated School Board and a member of the Texas Association of School Boards.

Dr. Grady P. Parker, professor of education and psychology, will be the workshop coordinator.

The Giddings high school choir, directed by Karl Hicksang, will sing at the opening session.

Six group discussions, with subjects ranging from the pupil to education legislation, will be held from 4:30 to 6 p.m. Group reports will be given by Dr. Paul R. Hensarling, head of the Department of Education and Psychology, at a general assembly at 8 p.m.

The other agenda item will be a panel discussion on "Teacher Welfare and Security."

## AMONG THE PROFS

# A&M Science Team Set For San Antonio Talk

Eleven A&M scientists will be in San Antonio Tuesday to outline the expanding field of agriculture to about 100 junior and high school counselors and principals in Bexar County.

The team will be made up of three groups headed by Dr. A. B. Wooten, associate professor in the Department of Agricultural Economics and Rural Sociology; Dr. Ruble Langston, professor, Department of Plant Sciences; and Dr. Ben Camp, associate professor in the Department of Biochemistry and Nutrition.

Wooten will lead a discussion on "What Is Modern Agriculture?"; Langston, "What Are the Facilities Necessary for Preparing Young Men and Women for Careers in Agriculture?"; and Camp, "What Are the Career Opportunities in Agriculture?"

Other members of the team are Dr. G. M. Watkins, director of Agricultural Instruction; Dr. R. C. Potts, assistant director of Agricultural Instruction; Dr. Richard Baldauf, associate professor, Department of Wildlife Management; Dr. Page Morgan, assistant professor, Department of Plant Sci-

ences; Dr. R. L. Skrabanek, professor of rural sociology; Dr. Ernest Smerdon, professor of agricultural engineering; Dr. Anton Sorensen, associate professor of animal husbandry; and Dr. Vance Edmondson, associate professor of agricultural economics.

Dr. Tyrus R. Timm, head of the Department of Agricultural Economics and Rural Sociology, has been named chairman of a new committee established by the National Agricultural Policy Committee.

The committee will evaluate foreign study teams of agricultural economists representing the land-grant colleges and financed by the Foreign Agricultural Service of the United States Department of Agriculture.

The committee will review the work of the seven previous teams composed largely of extension economists sent to different parts of the world and proposals for future teams.

The committee plans to confer with research administrators in the USDA about the possibility of having foreign research teams study methodology and help determine the competitive position of American agriculture.

Two faculty members will participate in a summer institute on Effective Teaching for Young Engineering Teachers at Pennsylvania State University, August 25 to September 5.

They are Walter L. Green, in Electrical Engineering, and Dr. Phillip T. Eubank, assistant professor in the Department of Chemical Engineering.

Dr. D. L. Huss, assistant professor of range and forestry, and Bobby Ragsdale, extension range specialist, will conduct a ranchers' field tour at the Barnhart, Texas, Range Station on May 2.

Ranchers from all parts of the state are expected to participate in the tour from 8:30 until noon. Huss, project leader of the range

station, and Ragsdale will emphasize livestock production as related to various grazing rates and systems.

Other topics to be covered on the tour are range improvement through deferred grazing and livestock management to reduce bitterweed poisoning.

The two men will also introduce the ranchers to research pertaining to control of perennial broomweed.

Cecil Steward and Willard Strode, professors in the Division of Architecture have been invited to participate in national meetings.

The Texas Architecture Foundation named Steward to attend the Association of Collegiate Schools of Architecture seminar at Cranbrook Academy of Art in Michigan June 9-19.

Strode will attend the Department of Defense seminar on fallout shelters at the University of Colorado July 22-Aug. 30. Strode will also attend the Architectural Engineers Division meeting for the American Society of Engineering Education in Philadelphia, June 17-21.

Carter Litchfield of the Department of Biochemistry and Nutrition has been named winner of the American Oil Chemists' Society Bond Award.

The award, a gold medal, was presented at the Society's annual spring meeting Wednesday at Atlanta, Ga.

Litchfield, an assistant professor, was selected for the honor for presenting the best research paper at two annual meetings of the society. Papers are judged on the basis of presentation and content.

Litchfield's paper was titled "Cis-Trans Isomerization of Oleic, Linoleic and Linolenic Acids."

Co-authors of the paper were Dr. Raymond Reiser and Mrs. J. E. Lord of the Department of Biochemistry and Nutrition, and Dr. A. F. Isbell of the Department of Chemistry.

## Language Club Will Present Play

Six members of the German Club will present an original play at the annual meeting of the Texas Association of German Students Saturday afternoon at the University of Houston.

The author of the play is M. E. Gottschalk, sponsor of the club and instructor in the Department of Modern Languages. The play, "Der Unfreundliche Mensch," will be presented in German.

The cast is Max Marable, John R. Teipel, David G. Lee, Robert E. James, Dayle G. Majors and Bill Ross.

The program will be entertained by the different clubs.

**OPEN EVERY DAY TILL 6**  
except Sunday SATURDAYS TILL 6  
**TIRES, BRAKE AND FRONT-END SERVICE ALL DEPARTMENTS OPEN**

**DO YOUR BRAKES GRAB? SQUEAL? PULL TO LEFT OR RIGHT? GET THIS...**

**Firestone SAFETY SERVICE**

Balance Both Front Wheels **4.50** Plus Weights

Adjust Brakes and Repack Front Wheel Bearings **3.50** Plus Seals

Align Front End **7.50**  
Replacement parts if needed and Torsion Bar Adjustment not included

**COMBINATION OFFER**  
**ALL 3 ABOVE SERVICES 9.95** Any American Car

**Firestone NEW TREADS**  
APPLIED ON SOUND TIRE BODIES OR ON YOUR OWN TIRES  
**WHITEWALLS—ANY SIZE**  
NARROW OR WIDE DESIGN TUBELESS OR TUBE-TYPE

**4 FOR 49.49**  
Plus tax and 4 trade-in tires

Our New Treads, identified by Medallion and shop mark are **GUARANTEED**

1. Against defects in workmanship and materials during life of tread.
2. Against normal road hazards (except repairable punctures) encountered in everyday passenger car use for 12 months.

Replacements provided on tread wear and based on list prices current at time of adjustment.

**FREE CAR SAFETY CHECK!**

**Geo. Shelton, Inc.**  
College Ave. At 33rd Free Parking TA 2-0139—TA 2-0130

It's your tapered shape and your hopsacking look that get me...

Mother always told me to look for the blue label™

**Keds**  
The Shoe of Champions

Keds "Court King" for tennis and all casual wear

Keds taper-toe Champion® in new, breezy hopsacking

Nobody's really suggesting romance will be yours if you wear U.S. Keds. But it is true that Keds are the best-fitting, the most comfortable, good-looking and long-wearing fabric casuals you can buy. Because Keds are made with costlier fabrics. With an exclusive shockproofed arch cushion and cushioned innersole. In short, with all those "extras" that make them your best buy in the long run. Head for your nearest Keds dealer. Get that Keds look, that Keds fit... **GET THAT GREAT KEDS FEELING!**

**US RUBBER** \*Both U.S. Keds and the blue label are registered trademarks of **United States Rubber**  
Rockefeller Center, New York 20, New York

Your U. S. KEDS  
May Be Purchased  
at  
**Loupot's**  
NORTH GATE

**WE FEATURE QUALITY FOODS**

<p><b>- GROCERIES -</b></p> <p>O'Sage—No. 2 1/2 Cans <b>Elberta Peaches . . . . . 2 For 49c</b></p> <p>Comstock—No. 2 Cans <b>Sliced Pie Apples . . . . . 2 For 45c</b></p> <p>Nabisco—1-Lb. <b>Premium Crackers . . . . . 29c</b></p> <p>Snowdrift <b>SHORTENING . . . . . 3-Lb. Can 59c</b></p> <p>Hersheys—16-Oz. Cans <b>Chocolate Syrup . . . . . 2 For 39c</b></p> <p>Starkist—Reg. Size Cans <b>Chunk Style Tuna . . . . . 3 For 89c</b></p> <p>Trellis—303 Cans <b>Green Peas . . . . . 2 For 29c</b></p> <p>Green Giant—Niblets <b>Whole Kernel Corn . . . . . 2 For 35c</b></p> <p>Mazola <b>Corn Oil . . . . . Quart 59c</b></p> <p>Folgers <b>COFFEE . . . . . 1-Lb. 59c</b></p> <p>Folgers <b>COFFEE . . . . . 6-Oz. Jar 69c</b></p> <p>Hunts—Quart Size <b>Tomato Juice . . . . . 2 For 39c</b></p> <p>Hunts—300 Size Cans <b>Fruit Cocktail . . . . . 3 For 59c</b></p> <p>Hunts—Sliced or Halves <b>PEACHES . . . . . 2 - 303 Size Cans 35c</b></p>	<p><b>- FROZEN FOODS -</b></p> <p>Swansons—8-Oz., Beef, Chicken or Turkey <b>Pot Pies . . . . . 5 For \$1.00</b></p> <p>Welches—6-Oz. <b>Grape Juice . . . . . 2 For 45c</b></p> <p>Sunshine State—6-Oz. <b>Orange Juice . . . . . 4 For 89c</b></p> <p>Tennessee <b>Sliced Strawberries . . . . . 2 For 39c</b></p> <p><b>- MARKET -</b></p> <p><b>Round Steak . . . . . 1-Lb. 79c</b></p> <p><b>Loin Steak . . . . . 1-Lb. 79c</b></p> <p><b>T-Bone Steak . . . . . 1-Lb. 79c</b></p> <p><b>Pin Bone Loin . . . . . 1-Lb. 59c</b></p> <p><b>Meaty Short Ribs . . . . . 1-Lb. 39c</b></p> <p><b>Fresh Ground Meat . . . . . 1-Lb. 39c</b></p> <p>Deckers—Tall Korn <b>Sliced Bacon . . . . . 1-Lb. 45c</b></p> <p>Hormels—Thick Sliced <b>Bacon . . . . . 2-Lb. Pkg. 99c</b></p> <p><b>Bordens Biscuits . . . . . 2 For 15c</b></p> <p><b>Log Cabin Oleo . . . . . 2-Lbs. 29c</b></p> <p><b>- PRODUCE -</b></p> <p>Extra Fancy <b>Red Delicious Apples . . . . . 1-Lb. 19c</b></p> <p><b>Yellow Squash . . . . . 1-Lb. 15c</b></p> <p><b>White Onions . . . . . 2-Lbs. 15c</b></p> <p><b>Celery . . . . . Stalk 13c</b></p>
---	--

SPECIALS GOOD THURSDAY AFTERNOON, FRIDAY, AND SATURDAY, APRIL 25 - 26 - 27.

**CHARLIE'S** FOOD MARKET  
NORTH GATE —WE DELIVER— COLLEGE STATION