

### New Program Plans Review Of A&M Staff

A program of annual "performance reviews" for classified members of the college staff is being started, director of personnel Frank C. Munroe announced.

"The objective is to enable the college to identify people with potential for development, promotion and transfer to posts with greater responsibility," Munroe said. He emphasized the "performance reviews" are not intended to compare one person against another.

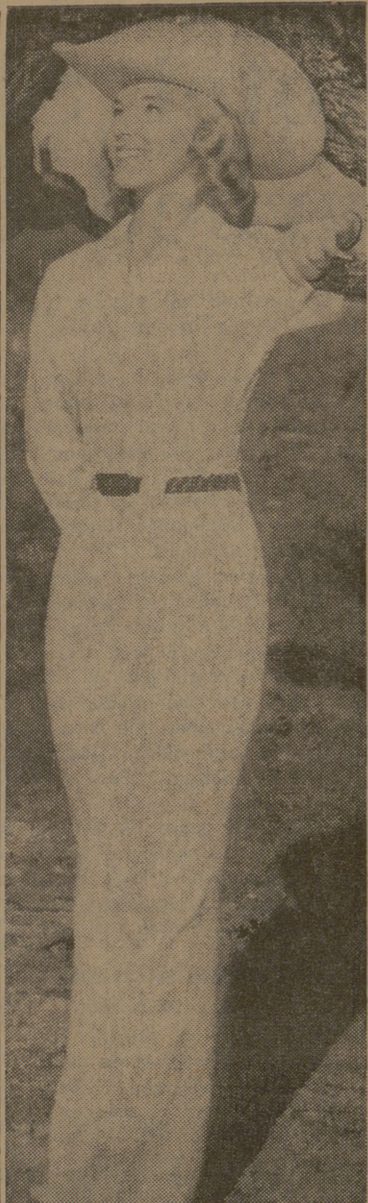
"IT WILL HELP us to build a record of each person's performance that will enable us to recognize and reward our people for job well done," he said.

The annual reviews will become a part of each person's permanent file.

The new program will be extended gradually until all classified members of the staff are covered.

THE "PERFORMANCE review" plan is among the programs instituted since the Personnel Department was organized at the start of this academic year.

Establishment of a central employment office for the college has been completed by the department which has offices in Room 210 of the YMCA Building. A testing program for new employees has been established, as well as an orientation program.



#### Rodeo Sweetheart

Pretty Becky Hemphill will be on hand to present trophies to winners in the 4th annual Quarter Horse Show sponsored by the A&M Rodeo Club April 6. Miss Hemphill, a junior at Texas Tech, was "Miss Rodeo of Texas" in 1960.

### Eco Students Win Awards, Scholarships

Three students in the Department of Economics have been named to receive graduate scholarships and fellowships by top United States universities.

Charlie Blaschke, president of the senior class, was notified Tuesday by Harvard University officials that he had been awarded a \$2500 scholarship.

Blaschke plans to do his graduate work in the field of public administration and political economy. His scholarship is slated to start in September.

Other students receiving awards are Frank McFarland, graduate student from Wills Point, and Dock Burke, senior from Quanah. The two students are both recipients of graduate university fellowships at Tulane University in New Orleans.

They will each receive \$2400 plus tuition and other fees to continue their studies in economics. Burke will begin work toward his M.S. degree while McFarland, who holds an M.S. from A&M, will start work toward a Ph.D.

### Registration Open For International Student Meeting

Monday is the deadline to register for the International Student Conference to be held at Camp Lakeview near Palestine, April 12-14.

Reservations for the conference may be placed at the Baptist Student Center at the North Gate.

Cost for the two-day conclave is \$9 with children from ages 3 to 11 being admitted at half price. Apartments are available for married students, and a cooperative child care program will allow parents to attend a major portion of the conference.

Ten persons have signed so far, Arthur M. Smith of the BSU said. Included in this group are Smith, Andres Olivares, Dr. and Mrs. Maurice Futrell, Eddie and John Futrell, M. A. Wahed, Syed F. Fazi, Don Whitehall and Craig Hay.

## Ag Engineers Visit Texas Industries

Eighteen agricultural engineering students are now touring various production facilities at Longview and Lone Star.

William H. Aldred, assistant professor of agricultural engineering who is shepherding the group, said the students will visit steel production and fabrication installations and farm machinery and earth moving equipment manufacturing plants.

He said the trip has five major points that will be valuable in the training of an agricultural engineer in the farm power and machinery field. They are:

- (1) Facilities used in production of steel from iron ore.
- (2) Methods and machinery used in fabrication and assembly of light and heavy equipment.
- (3) Procedure used by indus-

tries for estimating production costs.

(4) Safety practices used in manufacture of heavy equipment.

(5) Electric wheel principle for propulsion of earth-moving equipment.

Firms being visited are R. G. LeTourneau Inc., Kelley Plow Company at Longview, and Lone Star Steel Company at Lone Star. The group also will tour LeTourneau College.

Students making the trip are J. N. Carpenter, D. E. Gilmore, J. N. Hale, J. R. Hatton, W. L. Kirkpatrick, G. E. Kretschmar, E. R. Lindemann, L. T. Lipscomb and D. F. Lyons.

Others are R. C. Mersmann, J. M. Morrow III, D. G. Naiser, H. H. Norman, J. E. Parker, A. A. Peter, L. W. Redding, C. W. Richardson and O. C. Wilke.

### Poetry Competition Open To Students

The Bryan-College Station Poetry Society is sponsoring a poetry contest open to A&M students, Harry Kroitor of the Department of English, announced.

Poems for the contest will be accepted by Kroitor before May 6. The poetry society will announce the winner on May 13.

Students may submit as many as three poems which have not previously appeared in print. The poems may be on any subject and in any form.

A minimum prize of \$10 will be

### Literacy Council Slates Convention

The fifth annual convention of the Texas Literacy Council is being held in Corpus Christi Thursday through Saturday, Dr. Benton Storey announced today.

Storey, chairman of the Brazos Valley Literacy Council and treasurer of the Texas Council, will assist with administrative affairs at the convention.

## Herpetology Group To Gather Specimens At Holiday Meeting

Wildlife management students are planning to spend part of their Easter vacation at the annual meeting of the Texas Herpetological Society. The meeting, April 12-14, will be held at the Day Ranch along the Colorado River, south-east of Ballinger.

Texas, Southwest Texas State, and Texas Tech.

Dr. R. J. Baldauf, associate professor of wildlife management, said he hoped to have at least 20 students representing A&M.

Sunday morning there will be an exhibit of the specimens caught in that area during the previous two days. It will be open to the public.

Due to the remoteness of the area most of the group will camp out during the affair.

BESIDES MEXICAN FOOD  
**ZARAPE RESTAURANT**  
Serves Mrs. Andert's Wiener Schnitzel, Chicken Fried Steaks and Austrian Style Fried Chicken.

Telephone VI 6-5235

### READ BATTALION CLASSIFIEDS

**FRYERS** SWIFT PREMIUM **27<sup>c</sup>**  
WHOLE . . . . LB.  
**BACON** ARMOUR'S **49<sup>c</sup>**  
STAR . . . . LB.



Fresh Ground <b>HAMBURGER</b> 2 Lbs. <b>75c</b>	Baby Beef <b>SIRLOIN STEAK</b> lb. <b>75c</b>	Baby Beef <b>T-BONE STEAK</b> lb. <b>98c</b>	Rib <b>STEW MEAT</b> . . . . lb. <b>39c</b>
--	--	---	--

**PEPSI-COLA** 12 FOR **55<sup>c</sup>**  
Plus Dep.

PILLSBURY  
**Flour** 5 Lbs. **39<sup>c</sup>**

**Crisco** 3 Lb. Can **69<sup>c</sup>**

LIBBY'S TOMATO  
**Juice** 46 oz. **25<sup>c</sup>**

#### ... FROZEN FOOD ...

Golden Brown—Breaded  
**SHRIMP** 10-Oz. Pkg. **49<sup>c</sup>**

Libby's  
**LEMONADE** 6-Oz. Can **10<sup>c</sup>**

Simple Simon—24-Oz. Size  
**FRUIT PIES** **39<sup>c</sup>**  
Apple - Cherry - Peach

### Produce SPECIALS

No. 1—Vine Ripened  
**TOMATOES** Lb. **13<sup>c</sup>**

Fresh Juicy—Large Size  
**PINEAPPLE** Each **15<sup>c</sup>**

Green  
**AVOCADOS** 2 FOR **19<sup>c</sup>**

Fresh Beets or Collard  
**GREENS** 2 Bunches **19<sup>c</sup>**

Fresh Onions or  
**Radishes** 2 Bunches **15<sup>c</sup>**

Dole—Pineapple-Grapefruit  
**DRINK** 46-Oz. Size **29<sup>c</sup>**

Rosedale—Sliced or Halves  
**PEACHES** 2 1/2 Cans 5 FOR **1<sup>00</sup>**

Starkist  
**TUNA** Flat Can **29<sup>c</sup>**

Best Maid—Salad  
**Dressing** Qt. **29<sup>c</sup>**

HAVE YOUR CAR SERVICED AT WINN'S SINCLAIR SERVICE STATION WHILE YOU SHOP.

SAVE TIME AND MONEY. PLUS BIG BONUS STAMPS. FOR PICK UP SERVICE CALL VI 6-6620. JAMES WINN JR. MGR.

Libby's—Cut  
**BEETS** 2 303 Cans **25<sup>c</sup>**

Kobey—Shoestring  
**Potatoes** No. 300 Can **10<sup>c</sup>**

Winslow—No. 300 Can  
**Asparagus** 2 FOR **49<sup>c</sup>**

Best—Giant Size  
**Detergent** **49<sup>c</sup>**

Purina—Grade A Medium  
**EGGS** Doz. **39<sup>c</sup>**

WE RESERVE THE RIGHT TO LIMIT QUANTITIES. PRICES GOOD THRU SATURDAY, APRIL 6th.

**Winn's SUPER MARKET**

"YOU CAN'T LOSE AT WINN'S"

3800 TEXAS AVENUE (FORMERLY MILLER'S) BRYAN, TEXAS

Save BIG BONUS STAMPS

### Attention Aggies!



This handsome and distinctive statuette is authentic in detail and is hand painted in true colors!

An unusual gift suitable for anyone—Mom, Dad, Sister or your "one and only"

MAIL ORDERS ACCEPTED

MEMORIAL STUDENT CENTER GIFT SHOP

Price: \$3.95 (Add 35¢ for Mailing)

9" tall on a 3" x 3" base