

## Aerospace Course Stresses Teamwork In Class Projects

Senior students in aerospace engineering are now participating in a course of study that prepares them for industrial work through a team effort.

C. A. Rodenberger, associate professor of aerospace engineering, said Wednesday that the findings of Massachusetts Institute of Technology and other schools have shown that many engineering students, because of the stress placed in college on individual work, find themselves ill-prepared for the group work necessary in modern research. For the first time, aerospace students have been given a

term project to be done within a group.

"We ask these students to work as a group and come up with something new," Rodenberger explained. "We want them to use creativity through all that they have learned in their studies."

Students had their choice of space craft or commercial aircraft, then were divided into groups on a competitive basis.

Those working on the commercial level were asked to design a short range transport aircraft capable of a steep approach.

### COACH NORTON'S PANCAKE HOUSE

35 Varieties of finest pancakes, aged heavy KC steaks, shrimp, and other fine foods.

Daily . . . Merchants lunch 11 to 2 p. m.

## COEDS INCLUDED

# Students To Mix Studies With Globe-Circling Cruise

MIAMI—Students from colleges all over the country will take their studies to sea next year. A coed group of adventurers, including undergraduates, graduate students and instructors, will circle the globe aboard the 190-foot schooner Yankee Clipper. The air-conditioned ship, formerly owned by millionaire George Vanderbilt, has been modified to provide quarters for 50 passengers.

Yankee Clipper will depart Miami in January, 1964, on the 12-month, 50,000 mile expedition to offbeat islands and colorful ports of the South Seas, East Indies, Indian Ocean and tropical Atlantic. About 35 landfalls will be made and more than a dozen foreign countries visited on the unique, share-the-expense voyage now being organized by Capt. Mike Burke of Miami, owner and operator of

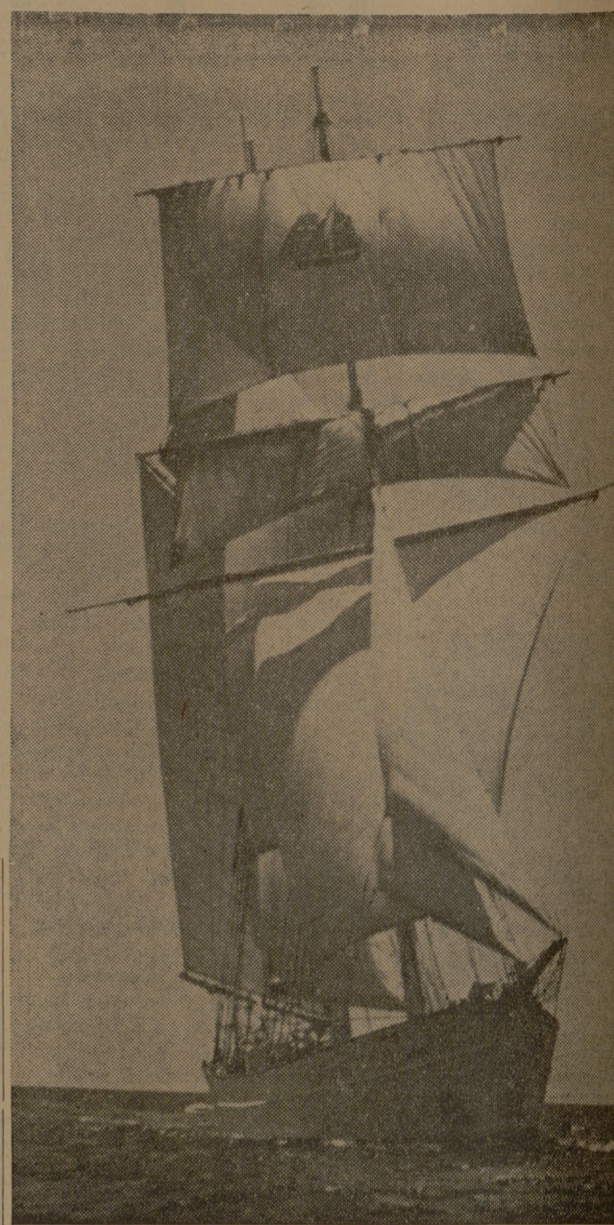
Windjammer Cruises, whose brigantine Yankee recently completed her fifth round-the-world cruise.

THE EXPEDITION'S ports-of-call will include Easter Island, whose stone heads have confounded explorers and archaeologists for centuries . . . the island of Pitcairn, where the descendants of the Bounty's mutineers still live . . . the Galapagos, where Darwin developed the basis for his theory of evolution . . . Tahiti, with its natural and female beauties . . . Bali, with its aura of the Orient . . . Zanzibar, spice island off Africa, where an inland safari will be arranged for interested passengers . . . and many other spots where cruise ships seldom call.

Capt. Burke's fleet of ships has carried over 12,000 passengers during the past decade. Five of his ships — Polynesia, Tondeleyo, Cut-

ty Sark, Mandalay and Caribe — are used for 10-day cruises in the Caribbean and Bahamas, while the others are employed on extended ocean voyages. "This round-the-world expedition is my real love," Burke said.

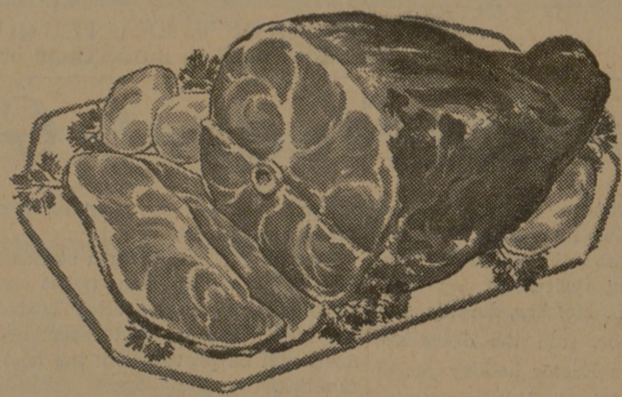
CAPT. BURKE added that Yankee Clipper will carry a crew of professional seamen, but all passengers who wish may stand wheel watches and learn to tend a sheet and splice a line. Classes in marinespike seamanship and navigation will be held, and the ship's library will be well stocked with volumes on nautical lore as well as books about countries and islands to be visited. The ship's complement will include a marine scientist and a historian who will give informal lectures illustrated by slides and movies. A physician will also be aboard.



Set For Students

The former Vanderbilt schooner, Yankee Clipper, makes its shake-down cruise in the Bahamas. The 190-foot schooner will sail from Miami next January with a group of students who plan on a 50,000 mile share-the-expense expedition around the world.

SWIFT'S  
**PICNIC HAMS** Lb. **25c**  
LEAN BRISKET STEW . . . . . lb 39c  
BABY BEEF ROUND STEAK . . . lb 79c  
BABY BEEF SIRLOIN STEAK . . . lb 69c  
BABY BEEF SHOULDER STEAK lb 55c  
ARMOUR'S STAR SLICED BACON . . . . . Lb. 49c  
RATH ALL MEAT FRANKS . . . . . 12-oz. Pkg. 39c  
PURE PORK SAUSAGE . . . . . (Extra Good) Lb. 39c  
FRESH GROUND MEAT . . . . . 2 Lbs. 75c  
FANCY BABY BEEF SHOULDER ROAST Lb. 43c



. . . Home Freezer Specials . . .  
Fancy Baby Beef or  
Swift's Premium Heavy Beef  
**SIDE . . . . . Only lb 49c**  
**FOREQUARTERS lb 45c**  
**HINDQUARTERS lb 59c**

**COCA-COLA** Plus Deposit 12 For **55c**  
Frozen Food  
**COASTAL FISH STICKS** 8-Oz. Pkg. **19c**  
**BANQUET FRUIT PIES** 3 Assorted **\$1.00**  
ROSEDALE VEGETABLES:  
Cut Beans, Blackeye Peas, French Beans, Chopped Broccoli, Lima Beans, Cut Corn, Okra, French Fry Potatoes, Green Peas.  
6 For **\$1.00**

**RED POTATOES** No. 1 Lb. Bag **28c**  
**FIRM GREEN CABBAGE** Lb. **3c**  
**FRESH COLLARD GREENS** 2 Bunches **19c**  
**TASTY CANTALOUPE** Large Size Each **19c**  
**SWEET JUICE ORANGES** 5 Lb. Bag **49c**  
**WINESAP COOKING APPLES** 4 Lb. Bag **39c**  
**RED GRAPEFRUIT** 5 Lb. Bag **49c**

HAVE YOUR CAR SERVICED AT WINN'S SINCLAIR SERVICE STATION WHILE YOU SHOP.  
SAVE TIME AND MONEY. PLUS BIG BONUS STAMPS. FOR PICK UP SERVICE CALL VI 6-6620. JAMES WINN JR. MGR.

Van Camp Pork & Beans 300 Can  
Le Grande Corn 303 Can  
Alma Cream Peas 300 Can  
Alma Blackeye Peas 300 Can  
Alma Cut Green Beans 303 Can  
Ranch Style Beans 300 Can  
**7 ASSORTED FOR 1.00**

Rosedale Pears 303 Can  
Rosedale Fruit Cocktail 303 Can  
Del Monte Peas 303 Can  
Hunt's Tomatoes 300 Can  
Sugary Sam Yams Lg. 2-1/2 Can  
**5 ASSORTED FOR 1.00**

**BISCUITS** Borden's 3 Cans **25c**  
**LARGE EGGS** Purina Grade A Doz. **47c**  
**WASHING POWDERS** Best Giant Box **49c**

**BLEACH** Best 1/2 Gal **19c**  
**TUNA** Clover Leaf 3 Large Cans **\$1.00**  
**LUNCHEON MEATS** Prem 12-Oz. Can **39c**

**NAPKINS** Northern 2 80 Ct. Boxes **23c**  
**VANILLA WAFERS** Shelby 1-Lb. Bag **29c**  
**DRINK** HI-C—ORANGE or GRAPE 46-Oz. Can **29c**

WE RESERVE THE RIGHT TO LIMIT QUANTITIES. PRICES GOOD THRU SATURDAY, MARCH 30th.

**Winn's** "YOU CAN'T LOSE AT WINN'S" **Save BIG BONUS STAMPS**  
3800 TEXAS AVENUE (FORMERLY MILLER'S) BRYAN, TEXAS

## Hogs To Be Topic For Short Course

A program which emphasizes new developments in swine feeding and practical housing and equipment for the hog farm has been announced for the 12th annual Swine Short Course here next Monday and Tuesday.

Two out-of-state speakers, Dr. Leland Tribble, in charge of swine research at the University of Missouri, and L. L. Stewart, owner of the world's largest private swine testing station at Frankfort, Ind., will be featured. Tribble is described as one of the nation's better known research scientists on feeding problems and Stewart as a down-to-earth, practical hog producer who tests 68 complete litters at home each season plus an additional eight to 10 at Purdue University.

A highlight of the two-day meeting will be a discussion by eight Texas commercial hog producers. Each will use colored slides to show his operations with special emphasis on housing and equipment.

THE EIGHT and their home towns are Jack Barton, Littlefield; Joe Glazer, Buckholts; Leonard Katzfey, George West; Euel Liner, Lubbock; Sam Rabb and Clayton Stribling, Llano; Dr. Walter Smith, Marlin; and Dr. R. M. Titsworth, Cameron.

Other speakers will be staff members from the Department of Animal Husbandry. Dr. R. E. Pat-

erson, dean of the School of Agriculture, will present awards to winners in the 1963 litter test program.

## Statistician Slated To Lecture Here

A statistician who becomes rector of the Graduate Institute of Statistics in July will visit campus Monday to present a graduate lecture.

Dr. H. O. Hartley is to lecture at 3:30 p.m. in the Biology Sciences Lecture Room on the "Elements and Applications of Linear Programming."

Hartley will be the first director of the institute here. He serves as a professor of statistics at Iowa State University.

He holds a Ph.D. in mathematics from Berlin University, a Ph.D. in mathematical statistics from Cambridge University and a D.Sc. degree in mathematical statistics from the University of London.

He visited this country in the summer of 1949 to work on an index of tables for statisticians. He turned to the United States to come a visiting research professor at Iowa State College in 1950, and became a professor of statistics at the college in 1954.

**TEXAS A&M STUDENT TOUR**  
departing  
JUNE 12, 1963 from New York  
**SPECIAL GROUP AIR FARE**  
exclusively for Students, Faculty and their immediate families.  
**\$336.40 JET TO EUROPE & RETURN**  
NEW YORK - LONDON . . . . . June 12  
PARIS - NEW YORK . . . . . July 13  
Group must have 25 persons and they must depart together June 12 and return together July 13. But they can travel independently in Europe for 30 days!  
**All inclusive 4-week European Tour**  
Air Fare . . . . . \$336.40  
Tour Cost . . . . . 386.00  
Total . . . . . \$722.40  
\*Four Weeks \*Sightseeing \*Trans Atlantic Jet  
\*All Hotels \*Meals \*Private motor coach in Europe  
ENGLAND, HOLLAND, GERMANY, AUSTRIA, ITALY, MONACO, FRANCE, SWITZERLAND  
For additional information contact:  
MSC STUDENT PROGRAM OFFICE  
Travel Committee  
Texas A&M College  
College Station, Texas