

First College Chess Tourney Will Be Held During Weekend

Plans for the first annual A&M Chess championship tournament have been announced by Gary Simms, chairman of the MSC chess committee. A five round Swiss type tourney will be conducted this weekend to determine the winner of a trophy and title of 1962 A&M chess champion.

The tournament is open to everyone; students, faculty, staff and citizens of the Bryan-College Station area. The title of champion will go to the undergraduate student who places highest in the final standings.

Registration is scheduled at 7 p.m. Friday in the Social Room of the MSC, with the first round scheduled immediately after completion of registration. Players have been asked to bring a board and set if possible. A 50 cent registration fee will be charged to

cover part of the tournament expenses.

Two rounds are scheduled Saturday, at 1 p.m. and 7 p.m., with the remaining rounds Sunday at 8:30 a.m. and 1:30 p.m. Play will be at the rate of 50 moves in two hours. International rules will be followed.

C. F. Garner Leaves Ag Extension Post

Connie F. Garner, a member of the headquarters staff of the Texas Agricultural Extension Service since 1954, first as an assistant entomologist and since 1959 as an associate, is resigning Friday to join a commercial concern.

The resigning specialist is known throughout Texas and beyond for his contributions to insect control work and for helping others. In announcing his resigna-

Marine Selectors To Leave Friday

A Marine Corps officer selection team will complete its last visit of the semester here Friday.

Primary purpose of the visit is to take applications from January graduates for the 33rd officers' candidate course, which begins March 11, 1963.

The team is located in the Memorial Student Center and can consult with students between 8 a.m.-4 p.m.

Centaur Vehicle Is Lecture Topic

A lecture on the "Development of the Centaur Vehicle" will be given here by a General Dynamics Astronautics engineer Tuesday.

Harry Whitmore, manager of systems integration for the Centaur space vehicle, will speak at an open meeting of the Institute

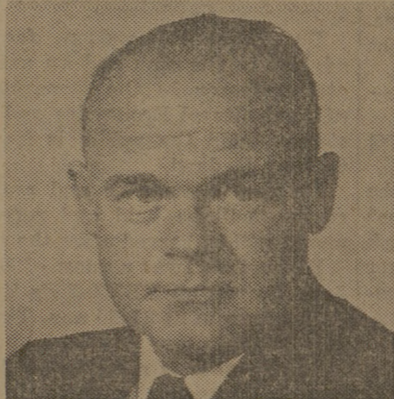
of Aerospace Sciences student chapter. It will begin at 7:30 p.m. in Room 229 of the Chemistry Building.

The public has been invited to attend.

Whitmore, who recently joined General Dynamics after retiring from an Army career, was resident ordnance officer for the Army at California Institute of Technology's Jet Propulsion Laboratories and Douglas Aircraft.

A 1942 A&M mechanical engineering graduate, he later earned a master's degree in mechanical engineering at Purdue.

After serving in Korea, he was chief of the White Sands Proving Grounds systems test division and later deputy director of the Ballistics Research Laboratories at Aberdeen Proving Grounds. He also has directed the West Coast office for the Advent Communication Satellite.



HARRY WHITMORE



'Quacking' The Postal Barrier

Postman Alfred Burk got the surprise of his life when he opened a postal box in front of the courthouse in Bay County, Ga., and found this duck inside. He informed the post superintendent that he had collected a package without postage. The duck was returned to its natural habitat, city lake. (AP Wirephoto)

FOR DELINQUENTS

Public Is Invited As School Opens

(Special to The Battalion) AUSTIN — The Texas Youth Council has invited the general public to attend the dedication and open house of the new Mountain View School for Boys and open house activities at the Gatesville State Schools for Boys, located near Gatesville, on Saturday.

Gov. Price Daniel will be the dedication speaker for the new \$2 million Mountain View school, a security treatment institution designed for the treatment and training for 480 delinquent boys. Governor-elect John Connally, members of the legislature, state officials, judges, juvenile officers and interested citizens from all over the state have been invited.

Following the dedication and open house at the Mountain View school, the general public, along with all state and local officials, has been invited to visit and inspect the Gatesville State Schools for Boys, composed of the following open-type training units:

Hilltop School (250 boys) with the reception center (100 boys); Terrace School (240 boys); Valley School (160 boys); Riverside School Unit I (160 Negro boys); and Riverside School Unit II (160 boys).

Lewis Ends Duty With A&M Friday

Dr. R. D. Lewis will retire today from the position of director of the Texas Agricultural Experiment Station. He became director of TAES on Sept. 1, 1946.

Immediate plans call for him to go to Syria in association with the Ford Foundation to assist in developing a land-grant educational and research program planned after the 100-year-old system of the United States.

He will serve as a program specialist and leader of a group of cultural scientists.

SWIFT'S PREMIUM FANCY FRYERS

Lb. 25c

SWIFT'S PREMIUM BACON

Lb. 49c

RATH ALL MEAT FRANKS 12 Oz. Pkg. 39c

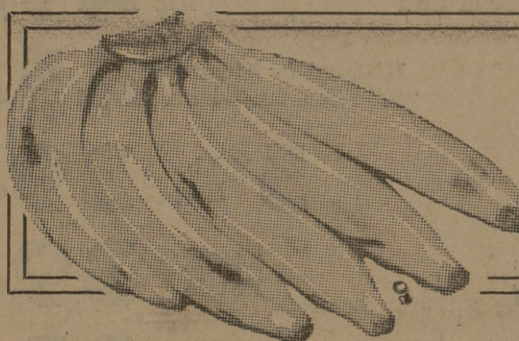
FANCY BABY BEEF SIRLOIN STEAK Lb. 79c

FANCY BABY BEEF T-BONE STEAK Lb. 98c



IMPERIAL SUGAR 5 Lb. Bag 45c

MARYLAND CLUB COFFEE Lb. 59c



GOLDEN BANANAS Lb. 9c

FIRM JUMBO LETTUCE

Head 15c

Winesap COOKING APPLES 4 Lb. Bag 35c
Home Grown MUSTARD GREENS 2 Bunches 19c

CALIFORNIA WHITE POTATOES 10 Lb. Bag 49c

PURINA GRADE A MEDIUM EGGS 2 Doz. 89c

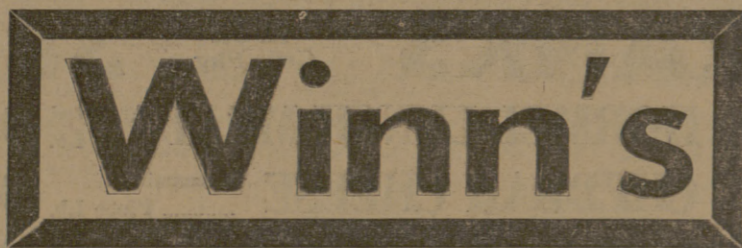
RATH or JEWEL SHORTENING 3 Lb. Can 55c

NESCAFE INSTANT COFFEE 6 Oz. Jar 79c

Big Pay Day Savings on These \$1.00 Specials

- HUNT'S PEACHES Sliced or Halves 4 Large 2 1/2 Can
- SUNNYVALE CHUNK PINEAPPLE 4 No. 2 Can
- ROSEDALE DELUXE PLUMS 4 Large 2 1/2 Can
- LIBBY'S DILL PICKLES 3 22-Oz. Jars
- LIBBY'S GOLDEN CREAM STYLE CORN 5 300 Cans
- HUNT'S SOLID PAC TOMATOES 5 300 Cans
- HUNT'S NEW WHOLE POTATOES 8 300 Cans
- SUNNYVALE FROZEN ORANGE JUICE 7 6-Oz. Cans
- VALLEY HI FROZEN STRAWBERRIES 6 10-Oz. Pks.
- BORDEN'S BISCUITS 11 Cans
- JIFFY CAKE MIXES 10 Assorted Boxes
- KRAFT'S BAR-B-Q SAUCE 3 18-Oz. Btls.
- HUNT'S CATSUP 3 20-Oz. Btls.
- LIBBY'S TOMATO JUICE 4 46-Oz. Cans
- RENOWN CUT GREEN BEANS 7 303 Cans
- VAN CAMP PORK & BEANS 7 300 Cans
- ALMA CREAM PEAS 7 300 Cans
- DUREL'S CORNED BEEF 3 12-Oz. Cans
- HUNT'S TOMATO SAUCE 10 8-Oz. Cans
- PARKAY OLEO 4 Lbs.
- AUSTEX TAMALES 3 Large Jumbo Cans

WE RESERVE THE RIGHT TO LIMIT QUANTITIES. PRICES GOOD THRU SATURDAY, NOVEMBER 29, 30, DECEMBER 1.



"YOU CAN'T LOSE AT WINN'S" SUPER MARKET

Save BIG BONUS STAMPS

3800 TEXAS AVENUE

(FORMERLY MILLER'S)

BRYAN, TEXAS



STUDENT RATE MAGAZINE SUBSCRIPTIONS

Available through your College Store

PUBLICATION	SCHOOL TERM RATE	1 YEAR
Atlantic Monthly	3.50 (8 mo.)	8.50
Downbeat	3.50 (8 mo.)	5.00
Ebony	2.00 (8 mo.)	3.50
Esquire	2.00 (8 mo.)	6.00
Fortune		7.50
Holiday	1.80 (6 issues)	3.60
Life	2.00 (6 mo.)	2.98
Look		2.00
Negro Digest	2.40 (8 mo.)	4.00
New Yorker	3.00 (8 mo.)	
Newsweek	2.75 (34 wks.)	3.50
Reader's Digest		2.97
Reporter	2.50 (8 mo.)	4.50
Saturday Eve. Post	2.00 (25 issues)	3.00
Sports Illustrated	rates go up 1-1-63	4.00
Time	3.00 (8 mo.)	4.00

A NATIONAL ASSOCIATION OF COLLEGE STORES SERVICE

To: THE EXCHANGE STORE CAMPUS

Please enter my order for the following magazines on current Student Rate. I am including the 2% State Tax currently collectable.

NAME _____
St. Address or P. O. Box Number _____
City _____ State _____ School _____
Year of Graduation _____ Amount _____

The Exchange Store

"Serving Texas Aggies"