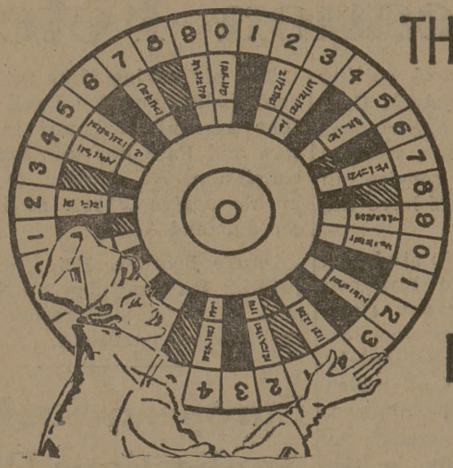


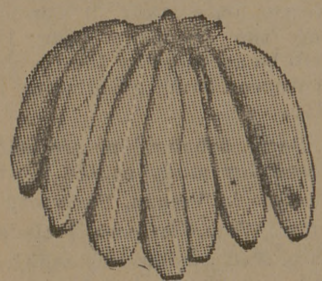
WINN'S

Grand Opening and New Ownership Sale
Three Big Days, Nov. 1, 2, 3, 1962

COME IN AND TRY YOUR LUCK ON
THE BIG WHEEL
OF FORTUNE



HUNDREDS
OF FREE
PRIZES!



Golden
BANANAS
lb. **7c**

Pillsbury Flour 5 Lb. Bag 39c

Krafts Cottage	
American Cheese Spread	2 lb. box 59c
Jewel Shortening	3 lb. can 59c
Pepsi Cola	Sun Crest, Strawberry or Grape Fruit Drinks 24 Bottle Case Plus Dep. \$110
Blue Seal Oleo	3 lbs. 50c
Nabisco Premium Crackers	lb. box 29c
All Brands	
Fresh Cello Bread	2 lg. loaves 49c
Purina	
Grade A Medium Eggs	2 dozen 89c
Bordens Cottage Cheese	lb. 19c
Bordens Butter Milk	half gal. ctn. 39c
Bordens Biscuits	3 cans 25c

The Best of Fresh Produce Rushed to WINN'S by Our Own Truck

Fancy RED APPLES	Washington State Delicious	lb. 19c
Crisp GREEN CELERY		lg. stalk 9c
California WHITE POTATOES		10 lb. bag 39c

WINN'S For The Best Of Fresh Meats

BABY BEEF TENDER
CROWN ROAST lb. **39c**

LEAN BRISKET
STEW MEAT lb. **39c**

Baby Beef Tender Shoulder Steak	lb. 55c
Baby Beef Tender Round Steak	lb. 85c
Baby Beef Tender Sirloin Steak	lb. 79c
Baby Beef Tender T-Bone Steak	lb. 98c
Baby Beef Tender Cutlet Steak	lb. 98c

SWIFTS PREMIUM
SLICED BACON lb. **49c**

LEAN FRESH
PORK RIBS lb. **29c**

FREE: Two Half Sides of Fancy Baby Beef To Be Given Away Friday and Saturday—One Each Day.

Buy Mortons Salad Dressing Quart Jar 43c
Get 1/4 Lb. Mortons Tea FREE

Buy Mortons 15c Bag Potato Chips	Get 15c Bag Free
Buy Krafts 8-Oz. Cream Cheese	get 3-Oz. Size Free
Buy Ronco 8-oz. Pk. Spaghetti	15c Get 8-oz. Pk. Free
Buy Ronco 8-oz. Macaroni	15c Get 8-oz. Pk. Free
Buy Lilly or Sanitary Mellorine	1/2 Gal. Sq. . . 49c 1 Pint FREE

Sunny Vale Frozen Orange Juice	. . . 7 For \$1.00
Sea Pac Fish Sticks 3 - 8-Oz. Pkgs. \$1.00
Banquet Cream Pies 2 Large Size 89c

— Libby's Foods —

Libby's Tomato Juice	4 2 1/2 Cans	\$1.00
Libby's Pineapple Juice	3 2 1/2 Cans	\$1.00
Libby's Orange Juice	3 46-Oz. Cans	\$1.00
Libby's Fruit Cocktail	3 Large 2 1/2 Cans	\$1.00
Libby's Fruit Cocktail	4 303 Cans	\$1.00
Libby's Pineapple Crushed	4 No. 2 Cans	\$1.00
Libby's Peaches Sliced or Halves	5 303 Cans	\$1.00
Libby's Vienna Sausage	5 Large Cans	\$1.00
Libby's Beef Stew	2 24-Oz. Cans	\$1.00
Libby's Chopped Beef	2 12-Oz. Cans	\$1.00
Libby's Potted Meat	6 Large Cans	\$1.00
Libby's Catsup	5 14-Oz. Bottles	\$1.00
Libby's Catsup	3 Lg. 20-Oz. Bottles	\$1.00
Libby's Brown Beans	7 For	\$1.00
Libby's Corn WK or CS	5 303 Cans	\$1.00
Libby's Garden Spinach	7 303 Cans	\$1.00
Libby's Blackeye Peas	7 303 Cans	\$1.00
Libby's English Peas	5 303 Cans	\$1.00
Libby's Pears	4 303 Cans	\$1.00
Libby's Cut Beans	5 303 Cans	\$1.00
Libby's Green Lima	4 303 Cans	\$1.00
Libby's Kidney Beans	7 303 Cans	\$1.00
Libby's Spanish Rice	5 303 Cans	\$1.00
Libby's Cut Beets	7 303 Cans	\$1.00

Winn's

YOU CAN'T LOOSE AT WINN'S

SUPER MARK ET

WE RESERVE THE RIGHT TO LIMIT QUANTITIES. PRICES GOOD THRU SATURDAY, NOVEMBER 3.

SAVE
**BIG BONUS
STAMPS**

14 Amendments Face Electors

The following proposed amendments to the Texas Constitution will be on the Nov. 6 general election ballot:

- No. 1—Authorizing political subdivisions to provide insurance for all employees.
- No. 2—Assistance to needy aged, needy blind children.
- No. 3—Creation of hospital districts in certain counties.
- No. 4—Authorizing the water development board to purchase storage facilities.
- No. 5—Authorizing the legislature to provide for the creation, establishment, maintenance and operation of local districts.
- No. 6—Pension programs for elected and appointed officers.
- No. 7—Continuity of state and local governmental operations in the event of enemy attack.
- No. 8—Assistance to totally and permanently disabled.
- No. 9—Creation of two hospital district in Brazos County and homes for the aged in Titus County.
- No. 10—State employees serving in consulting capacities to other agencies of the government.
- No. 11—Resale of unsold lands belonging to the veterans' land fund.
- No. 12—Delegation zoning powers in certain counties.
- No. 13—Dallas County school district financing.
- No. 14—Trials de novo on appeals from rulings of administrative agencies.

C. S. United Chest Begins Effort To Raise \$17,000 In 14 Days

College Station United Chest workers fanned out this morning to raise \$17,000 in a 14-day campaign.

"It is the efforts of all of us which bring success in such a campaign," Dr. W. J. Graff, campaign chairman, told 100 persons at the kickoff breakfast in the MSC ballroom.

"Emphasize the united aspect of the campaign," the dean of instruction continued. "Urge that all give a day's pay. Don't overlook anyone. Give everybody an opportunity to contribute."

Graff pointed out that contributions will be shared by 15 different agencies. The four general areas are youth, welfare, recreation and medical.

Bryan's campaign success is cited as a challenge to College Station in meeting the increased goal.

"Let's start off with enthusiasm and hard work, Graff urged. "By your own commitment, then you feel better about approaching others."

Collections will be totaled Friday afternoon with the first report Saturday from Pieter Groot, campaign treasurer. Progress reports continue each Monday, Wednesday and Friday.

Chest leaders including Board of Directors were introduced at the breakfast. Dr. Chris Groneman, head of the Department of Industrial Education, is campaign chairman.

Agricultural Economics, Sociology Prof To Assume International Training Post

Dr. Howard S. Whitney, associate professor in the Department of Agricultural Economics and Sociology, will resign Nov. 12.

Dr. Tyrus R. Timm, department head, said the professor has accepted the position of assistant director of the International Co-operative Training Center at the University of Wisconsin.

"Although we regret losing Dr. Whitney, we feel honored that a member of our staff would be selected for one of the finest positions in the world involving resident instruction in agricultural co-operatives, Timm said. "This appointment reflects favorably on Dr. Whitney as a great teacher and

also on leadership of the State of Agriculture at A&M in the area of agricultural co-operation."

Red Books Seized

QUITO, Ecuador (AP)—Police in the port city of Guayaquil seized three tons of Communist propaganda books and pamphlets the government announced Monday. Whether the material came from Cuba, the Soviet Union or Red China was not disclosed. Four Ecuadorians were arrested. The material was found on a Guayaquil pier after a telephone tap by police.

Carol
Rodgers®
JUNIORS

As Advertised
in Seventeen
Magazine



Joyce's

Open Thursday Evenings
til 8:30
608 S. College Bryan

Fashion spice by Carol Rodgers Juniors of Milliken's luxury-touch Cuenella® 87 1/2% wool, 12 1/2% nylon. Satin novelty belt with rhinestone highlight. Black & Red. Sizes 5 to 15. \$10.98