

Dr. Skrabanek Co-Authors New Agriculture Volume

Dr. R. L. Skrabanek of the Department of Agricultural Economics and Sociology is one of several authors of a book just off the press. Title of the book is "Rural Land Tenure in the United States."

Twelve persons in American and Canadian universities and the U. S. Department of Agriculture contributed to the book.

The volume runs more than 300 pages and is an inter-disciplinary approach to problems, progress and trends in land tenure. It was prepared mainly for use by advanced undergraduate and graduate students.

Dr. A. A. Price, dean of the School of Veterinary Medicine, visited Texas Tech Thursday to discuss the pre-professional program in preparation for the trimester system in veterinary medicine.

Three members of the School of Veterinary Medicine are participating in the Conference of Veterinary Laboratory Diagnosticians and the annual meeting of the U. S. Livestock Sanitary Association in Washington, D. C.

Dr. T. E. Franklin and Dr. L. H. Carroll of the Department of Veterinary Microbiology.

Franklin is a member of the USLSA Committee on Anaplasmosis. Grumbles is a member of the Program Committee for the Conference of Veterinary Laboratory Diagnosticians.

An industrial economics study, "Factors Influencing the Location of the Primary Metal and Fabricated Metal Products Manufacturers in Texas, 1946-1961" by William L. Thorton and Bill R. Shelton, recently has been published in leaflet form.

The study revealed that primarily the market, but also such factors as labor, business climate, fuel, raw materials and transportation, influenced establishment of the 663 new plants in the primary metal and fabricated metal products industry in Texas during the 15-year period.

Louis M. Beck has joined the Department of Agricultural Economics and Sociology as an assistant professor of sociology.

A native of Illinois, Beck received his BA degree from Blackburn College in 1955, did graduate work and taught at Washington University.

After serving in the Armed Forces, he continued his graduate studies and taught at Louisiana State University. He completed his MA degree in sociology at LSU in 1960.

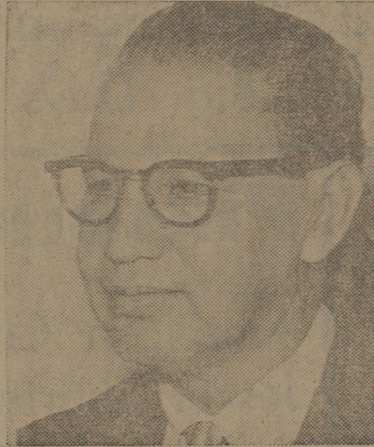
Beck plans to finish his doctoral work and receive his PhD from LSU by next fall.

Barbecue Set Before SMU Game

The Dallas A&M Club is again sponsoring a barbecue for Aggies just prior to the A&M-SMU game Nov. 10. The fete will be held from 11 a.m.-2 p.m. at the Women's Building on the State Fair grounds, just west of the Cotton Bowl.

The event is free to Aggies and their dates.

After the game the Memorial Coliseum will be the scene of the Dallas A&M club's party from 9 p.m.-2 a.m. Tickets are \$6 a couple, refreshments included.



PAUL L. RODRIGUEZ

Sbisa Will Handle Convocation Fete

Details of the general setting for the luncheon at the A&M Convocation Nov. 16 are in experienced hands. Paul L. Rodriguez, veteran of almost 34 years service in Sbis Hall, and his staff have the responsibility.

Paul, as he is known to students, figures the convocation luncheon will be the biggest event since Dwight D. Eisenhower was on campus in 1950. Approximately 1,400 persons sat down at tables in Sbis Hall to hear Eisenhower.

"Any function that pertains to the college, I'm usually in the middle of it," Paul said. He and his crew have arranged tables and then cleaned up afterward for scores of luncheons, banquets and dances.

A native of Bryan and graduate of Stephen F. Austin High School, Paul joined the A&M dining hall staff March 28, 1929.

"It's the only job I ever had in my life," Paul said.

Men he knew as students, including several who worked for him, now hold high posts in government, education, business and other fields. Former students often come by Sbis to visit Paul.

The old saying "like father, like son" holds true for Paul. His father strongly believed in education and Paul has this same firm conviction. He decided to remain in his native Bryan so his sons could attend A&M.

Paul's brother, Pete, is also a veteran staff member on the campus. He is a storekeeper in the chemistry department.

European Study Applications Due

Scholarship applications for undergraduate study in Europe during the academic year 1963-64 will be accepted by the Institute of European Studies beginning Thursday.

Seven scholarships are being offered for study at the Institute's centers in Vienna, Paris and Freiburg, West Germany. Included are three full scholarships which cover all basic costs such as tuition, fees, field-study trips, room, most meals and round-trip ocean transportation from the United States.

'Firefly' Satellite Orbited To Improve Map Making

CAPE CANAVERAL, Fla. (AP)—A "Firefly" satellite with four blinking beacons zipped into orbit Wednesday to survey the earth. It will measure surface bulges, and dips, the center of gravity and distances between far-apart places.

The unique satellite, officially named Anna, could produce more accurate maps of our world and gather vitally needed information for tracking future American astronauts to the moon and back.

Militarily, Anna could more precisely pinpoint location of possible enemy targets for long-range missiles, but officials considered that a secondary role.

A two-stage Thor-Able-Star rocket rifled into the darkness to propel the 355-pound sphere into a nearly perfect circular orbit about

735 miles above the earth.

Because the rocket was aimed on a northeast heading which carried the satellite over the Soviet Union, the Defense Department announced launching time in advance so that Soviet missile trackers would not mistake Anna for a hostile weapon.

A project spokesman reported all systems in the satellite were functioning perfectly. He said trackers will follow the payload for three days to determine exact orbital path before starting to exercise the flashing lights some-

time Saturday night.

Although packing the illuminating power of a lighthouse, the flashes would be so far away they would not be visible to the naked eye. But officials said anyone with binoculars should be able to spot them as dim stars in the night sky. The Defense Department is expected to announce light activation times in advance.

Ninety-two per cent of commercial timberlands owned by forest industries is used for hunting.

BATTALION CLASSIFIED

WANT AD RATES One day . . . . . 25 per word 2 per word each additional day Minimum charge—10¢ DEADLINE 4 p.m. day before publication Classified Display 30¢ per column inch each insertion PHONE VI 6-6415

LOST Mido wrist watch, vicinity Sbis and Dorm 15. Reward. Don Oleson, 15-194. 1512

CO/AD CLASSIFIED Serving 700,000 readers of college newspapers For rates, write CO/AD 396 Park Ave. San Jose, Calif.

TRAVEL EUROPE—Discover this bargain. Write: Europe, 255-C Sequoia, Pasadena, Calif.

HUMOR 30,000 COMEDY Lines. Free catalog. Orben, 8536a Daniel Crescent, Baldwin, N.Y.

OPPORTUNITIES SAVE 15% Reporter Magazine, \$5.10 yr. USA "Readers Service Center," c/o CO/AD Box C.

BICYCLE MOTORIZING Plans—Send \$1; convert bicycle to Motorcycle. Go-Bik Industries, Fargo, Minn.

HEALTH—Reducing, Gaining Muscles, Longevity, Mail 25¢ for all 4 courses. Buy Now. Health Course, \$1. Agents Kit, \$2. Big Deal, \$3. Guaranteed! Sids System, 8421-C Evergreen, Southgate, Calif.

EDUCATIONAL SUPER LEARNING power overnight! Success guaranteed! Write "Guide," Box 383C, Yorktown Heights, N.Y.

EXPERIMENT WITH sleep-learning! Fascinating, educational. Details free. Research Association, Box 24-CP, Olympia, Wash.

EXPRESSION—Controversial French Weekly. Howard Publications, 1475 Broadway, New York.

TYPEWRITERS Rentals-Sales-Service Terms Distributors For: Royal and Victor Calculators & Adding Machines

CATES TYPEWRITER CO. 909 S. Main TA 2-6000

YOUR DISTRIBUTOR FOR EICO KITS Garrard Changers HI-FI Components Tape Recorders

Use Our Time Payment Plan BRYAN RADIO & TV TA 2-4862 1301 S. College Ave.

AGGIES NOTICE To Rent Brazos County A&M Club For Mixed Parties—See Joe Faulk. SAE 30 Motor Oils . . . . . 1.56 Qt. Major Brands Oils 27-31¢ Qt. For your parts and accessories AT A DISCOUNT See us—Plenty free parking opposite the courthouse. DISCOUNT AUTO PARTS Brake shoes, Fuel pumps, Water pumps, Generators, Starters, Solenoids, etc. Save 20 to 50% on just about any part for your car. Filters 40% discount AT JOE FAULK'S 25th and Washington

CHILD CARE

HUMPTY DUMPTY NURSERY Children of all ages, weekly and hourly rates, 3404 South College Avenue, Bryan, Texas. Virginia Davis Jones. Registered Nurse. TA 2-4863. 124trn Will keep children, all ages, will pick up and deliver. VI 6-8151. 111trn

WORK WANTED Typing - electric typewriter. Experience: Secretary, business teacher. VI 6-8510. 85trn

FOR RENT

Unfurnished large three bedroom house, near all schools. Call Blair Perryman. VI 6-7244 or Dishman Real Estate, VI 6-8556. 244tr

Available November 1, unfurnished house, three bedrooms, bath and half, den, double garage, central heat, two air conditioner units, washer and dryer connections, one block from Townshires, 508 Avondale, \$125.00 month. TA 2-3887, after 6 VI 6-5322. 244tr

Roomy attractive two bedroom unfurnished apartment. 413 Sulphur Springs Road, Bryan. Call VI 6-6669. 23trn

INVISIBLE REWEAVING Cigarette Burns - Moth Holes Cuts & Tears Inquire: Mary Carter Paint Store 395 E. Dodge Bryan Mondays thru Fridays TA 2-4172

DR. G. A. SMITH OPTOMETRIST SPECIALIZING IN EYE EXAMINATIONS and CONTACT LENSES BRYAN OPTICAL CLINIC 795 N. COL. MAIN • BRYAN, TEXAS

HOME & CAR RADIO REPAIRS SALES & SERVICE KEN'S RADIO & TV 303 W. 26th TA 2-2819

CONNALLY for GOVERNOR "Texas needs BIG JOHN" Stickers, buttons and literature available at Campus Headquarters . . . North Gate (upstairs), across from Post Office. (Paid Political Ad)

WELCOME TO Al Williams Humble Products Completely Owned and Operated By A&M Students 1 Block West of Dorm 16 — VI 6-7229

SHIPLEY DONUT & COFFEE SHOP For The Best Coffee & Freshest Donuts ANYWHERE Hamburgers — Short Orders — Fountain Service

Cash Available For Books, Slide Rules & Etc. 5,000 AGGIES CAN'T BE WRONG LOUPOT'S Complete Stock of Hi-Fi Stereo & Radios LA FAYETTE RADIO ELECTRONICS Associate Store 3219 Texas Ave.

HELP WANTED

Students who are interested in assisting in physics laboratories may contact the department secretary in Room 225 of Physics Bldg.

FOR SALE '52 Ford V-8, radio heater, good tires. H-9 Walton. 243tr

4305 College Main, five room, one bath house. Can be used as home or rental property. Price reasonable. Call after 4 p.m., VI 6-4865. 23tr

Wash and grease \$1.00 with minimum fillup of 8 gallons of gasoline. The New Sinclair Service Station, Hwy. 6 South at East Gate, College Station, VI 6-9882. 19trn

SPECIAL NOTICE

NU-WAY BEAUTY SHOP owner, Annie Way, wishes to introduce Carolyn Herwig, experienced operator who specializes in natural curl hair-cutting. Special November 6-10, hair-cuts only \$1.00. The shop is open Monday-Saturday. Call for appointments, TA 2-4407. 2542

Save on auto insurance through dividends, call George Webb, Farmer Insurance Group, 3510 South College, Bryan, TA 2-4461. We insure single men under 25 at standard rates. 186trn

Now start your fall fishing and picnicing right at Hilltop Lake, if rained out, come back free, 9 1/2 miles south of college on highway 6, VI 6-8491. 186trn

SOSOLIK'S T. V., Radio, Phono., Car Radio Transistor Radio Service 713 S. Main TA 2-1941

ENGINEERING AND ARCHITECTURAL SUPPLIES BLUE LINE PRINTS BLUE PRINTS PHOTOSTATS SCOATES INDUSTRIES 608 Old Sulphur Springs Road BRYAN, TEXAS

TV - Radio - Hi-Fi Service & Repair GILS RADIO & TV TA 2-0826 2403 S. College

Weingarten's SALE! U.S. CHOICE TENDER-AGED BEEF! ROUND Steak Lb. 79c SIRLOIN Steak Lb. 89c T-BONE Steak Lb. 99c Tender-Aged-Rump ROAST Beef Lb. 75c HENS Small Size 27c Prices Good In Bryan Only. Thru Sat. Nov. 3.

SALE TENDER YOUNG TEXAS VEAL! Round Steak Veal Lb. 77c Sirloin Steak Veal Lb. 85c T-Bone Steak Veal Lb. 89c

ORANGES 5 Lb. Bag 35c APPLES Rome Beauty 2 Lbs. For 35c PASCAL CELERY 2 Stalks For 29c POST TOSTIES 18-Oz. Pkg. 37c HUNTS TOMATO PASTE 2 6-Oz. Cans 27c JELLO Assorted Flavors 9 6-Oz. Pkgs. 37c

Top Spred Oleo Lb. Ctn. 13c Cokes Plus Deposit 12 Bottle Carton 55c Bologna Mohawk Large By The Piece Lb. 29c