



Look What Dropped In
Mr. and Mrs. Dolph Price were at home when this big Douglas fir tree toppled into their home at the height of a storm in Kelso, Wash. Price was on one side of the tree and his wife on the other. Neither was hurt. (AP Wire-photo)

Engineers Council Selects Officers

New officers and members of the Student Engineers' Council for 1962-63 have been announced by John G. McGuire, assistant dean of engineering.

President of the council for the current academic year is John Focke, architecture junior from Houston. Walter F. Whatley, senior petroleum engineer from McAllen, is vice-president.

Secretary of the council is Donnie Rudd, chemical engineering junior from Liberty. Linton T. Lipscomb of Bryan, an industrial education major, is treasurer.

Members of the Student Engineers' Council for the 1962-63 year are: Jerry Bob Hattox, Alfred W. Hughlett, Linton T. Lipscomb, Cliff M. Jensen, Jimmy L. Humphrey, Ronald J. Delavan, Wallace L. Johnston.

Gary L. Balsler, Travis C. Carr, James F. Setchell, Raymond V. Gomez, James R. Hollis, Peter Carl Forester, Donald Thompson Hunter, John W. Focke, Lawrence W. Christian, J. D. Morgan.

Robert A. Hall, Henry Moreland, Thomas Hollis Meadows Jr., Donnie Rudd, Herbert Cecil Allen, Homer R. Shinn, Walter F. Whatley.

Ernest Montgomery, John M. Fitts, Carl V. Sudderth, Gary A. Volz, Lee Grant, John S. Imle Jr., Dan Scarborough.

James D. Carnes, Warren Walker, Jimmie D. Guy, Lloyd E. Kleypas and Bernard Lednicky.

Read Battalion Classifieds Daily



Lovely Basic in Wyner's Sag-No-Mor Jersey and completely lined, Sizes 5-17, Red or Clay
\$18.98

Joyce's

Open Thursday Evenings til 8:30

608 S. College

Bryan

Cotton Farmers To Fight Injunction

EL PASO (AP) — Culberson County cotton farmers Fred Chandler Sr. and Fred Chandler Jr. Wednesday asked the El Paso federal court to enjoin the Agriculture Department from collecting \$60,000 in penalties and forcing a plow under of cotton in an Oklahoma-to-Texas cotton allotment transfer.

The petition for injunction, filed before U.S. Dist. Judge R. E. Thomason, alleges that the Agriculture Department violated its own regulations in ordering the Chandler cotton allotments cancelled and 300 acres of cotton plowed under.

Cotton in Culberson County is being harvested now.

The plaintiffs ask the court for an order enjoining the defendants from taking any action "which would irreparably injure the plaintiffs" pending final determination of the matter.

THE PETITION for the injunction is against members of the Culberson County Agricultural

Stabilization and Conservation Committees ASC and members of the ASC review committee, which sustained the county committee in cancelling the cotton allotment transfer.

What this means is that the Chandlers asked that the ASC be enjoined from collecting penalties of \$60,000 and from compelling the plowup of the 300 acres of cotton.

Last month Judge Thomason

Flu, Sore Throat Invade Local Area

Fall is here and so is the flu, according to the Bryan-Brazos County Health Unit. Nearly 60 cases of influenza have been recorded in Bryan and College Station for the week ending Oct. 6.

The next most popular disease is strept throat, the health unit said. Four cases of measles have also been reported in the College Station area.

granted a temporary restraining order prohibiting these actions. A review committee upheld the decision of the county committee. A hearing on the matter was scheduled to be held last Friday by Judge Thomason, but it was postponed.

A MEMORANDUM in support of the petition for preliminary injunction contends that the transfer of acreage allotment from Oklahoma to Culberson County was approved by the Culberson County ASC Committee and by the Texas state director of the ASC.

It contends that the cancellation of the transfer was ordered by the ASC administrator in Washington contrary to regulations of the ASC.

The Chandlers' petition states that the national ASC administrator and the Texas director of the ASC attempted to have the Culberson County committee indicate that the cancellation was by order of the local committee.

THE CHANDLERS' petition states that the county committee refused to do this and in fact inserted a paragraph in the cancellation order saying that the cancellation was by direction of Washington authorities and the state director.

The heart of the controversy is the question of whether there was misrepresentation in transactions

whereby Oklahoma farmers had been disposed of their in an Oklahoma reclamation project bought land from the Chandlers in Culberson County, transferred their cotton acreage allotments to the Texas farms and leased the land back to the Chandlers.

THE GOVERNMENT has contended that the land transferred were not a bona fide sale. A review committee upheld the government's contention. The Chandlers contend that the legal orders speak for themselves and there were no side agreements.

Joining with the Chandlers plaintiffs, the petition shows Cecil E. Brown, Custer, Okla.; Thur H. Crawford and Arthur Easley, Hydro, Okla.; V. Fletcher and Woodrow G. Miller, Okla.; James R. Kinney, E. Kinney and Walter S. Kinney, Clinton, Okla.; Hubert E. Canute, Okla.; and Vernon Laughlin and Jack Warner, addresses were not listed.

Ag Bible Class To Meet Monday

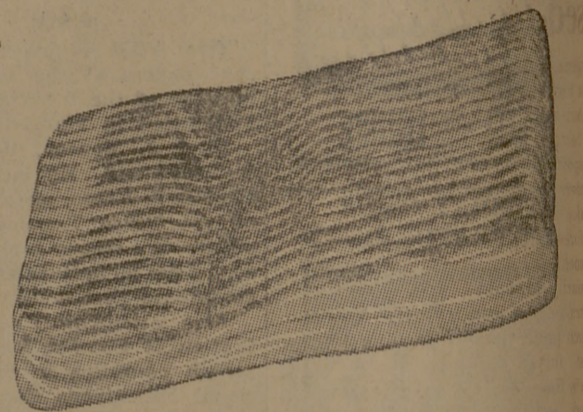
The Monday Night Aggie Bible Class is holding sessions each Monday night in the lounge of Dorm 10, according to Bob Snedaker, chaplain, Second Wing.

The sessions are scheduled from 10:25-11 p.m. for nine weeks. Monday's class will feature "John the Baptist's Testimony of God's Lamb," with James Ray presiding, Bob Snedaker teaching, and "Prof" Smith as resource teacher.

WINN'S SUPER MARKET — The Center of Fine Meats and Vegetables

SWIFT'S PREMIUM BACON lb. **48c**

WINN'S	
Tender Crown Baby Beef Roast	lb. 48c
Brisket Baby Beef Stew Meat	lb. 38c
Shoulder Baby Beef Steak	lb. 58c
Tender Baby Beef Sirloin Steak	lb. 78c
Tender Baby Beef Round Steak	lb. 88c
Fancy Baby Beef T-Bone Steak	lb. 98c
Tender Veal Cutlets	lb. 98c



Pillsbury

FLOUR

5 lb. bag **39c**

FRESH JUMBO
LETTUCE Head **15c**

Kobey Shoe String
Potatoes 300 Can **10c**

LARGE RED RIPE Tomatoes	lb. 19c	LARGE California Peaches	lb. 19c
FIRM GREEN Cabbage	lb. 7c	PINK SEEDLESS Florida Grapefruit	5 lb. bag 39c

ADMIRATION COFFEE lb. **55c**

BANQUET CREAM PIES	Extra Good Cocoanut - Lemon - Chocolate - Strawberry	2 For 89c	
BORDEN'S BISCUITS	3 Cans 25c	RANCH STYLE BEANS	2 300 Cans 25c
SUGARY SAM YAMS	2 Large 2 1/2 Cans 39c	ROSEDALE PEARS	2 303 Cans 39c
FRUIT COCKTAIL	Libbys 3 Large 3 1/2 Cans \$1.00	FISH STICKS	Sea Pac 3 8-Oz. Pkgs. \$1.00
ORANGE JUICE	Sunny Vale Frozen 4 6-Oz. Cans 59c	FRESH CELLO BREAD	All Brands 2 Large Loaves 49c

Winn's YOU CAN'T LOOSE AT WINN'S
SUPER MARKET

SAVE
BIG BONUS STAMPS

WE RESERVE THE RIGHT TO LIMIT QUANTITIES. THESE PRICES GOOD OCTOBER 18, 19, 20.