

# Christmas Seal Chairman Named

## Rao Drive-In

**NEW DELIVERY SERVICE**  
7:30 P. M. til 11:00 P. M.

We will deliver orders to all of College Station and Campus . . . . .  
50¢ charge on delivery on all orders under \$3.00—Free delivery on all orders over \$3.00.

CALL US AT VI 6-4887.

Mrs. W. E. McCune, 2318 Wayside Drive, Bryan, has accepted the chairmanship of the 1962 Christmas Seal Campaign, which opens Nov. 13.

The announcement of Mrs. McCune's appointment was made by Kermit Snyder, president of the Brazos County Tuberculosis Association, who said, "We are indeed fortunate in securing Mrs. McCune to head our drive this year because she always takes such an active interest in the social and civic affairs of the communities in which she lives."

Mrs. McCune came to Bryan in 1959 with her husband, who is Director of A&M's Farm Electrical Research. Since coming to Bryan she has been active in clubs and church organizations in the com-

munity, serving as president of the Newcomers Club at A&M, vice president and later reporter of the Campus Study Club and presently treasurer of the A&M Garden Club. She also teaches a class of high school girls at the First Baptist Church in Bryan.

Following the announcement of her appointment Mrs. McCune said, "Although it may seem early, we are starting immediately to organize the Christmas Seal Campaign, which will provide funds for the voluntary program to wipe out TB in Brazos County. I feel sure when people learn that there are as many as 10 children and 50 adults in Brazos County who are now victims of TB, they will be glad to support our drive. We will welcome any volunteers."

By Charles M. Schulz

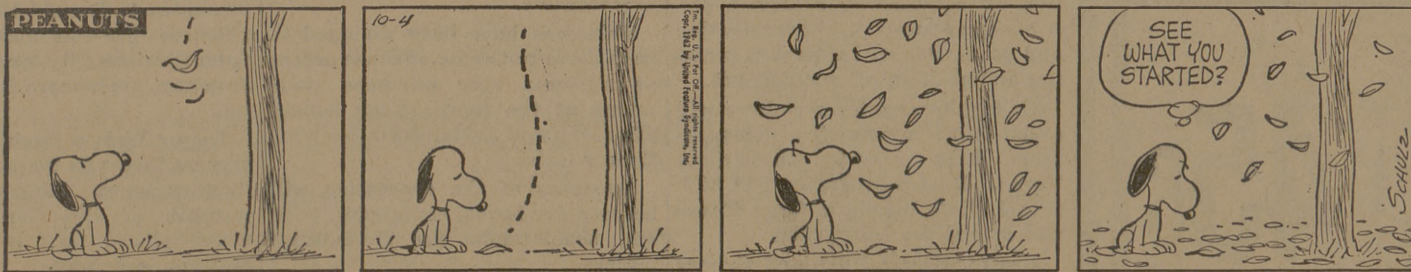


### Rudder On Survey Group

President Earl Rudder, far left, is one of five members named to this educational survey committee. The group is conducting a survey of the Army Command and General Staff College at Ft. Leavenworth,

Kan. Other members, left to right, are Gen. Edward J. O'Neill, Gen. Clyde D. Edman, Lt. Gen. Emerson L. Cummings and Col. George B. Smith.

PEANUTS



### AMONG THE PROFS

## Five Staffers To Tour Ecuador Farm Programs

Five A&M faculty and staff members will leave this month to tour Ecuador's agricultural programs, according to Dr. Jack D. Gray, coordinator of the Foreign Program Office.

Going on the month-long trip will be Dr. G. M. Watkins, director of agricultural instruction; Dr. W. N. Williamson, assistant director of the Texas Agricultural Extension Service; Dr. R. L. Skrabanek, professor of sociology; Harley Bebout, associate professor of marketing; and Carroll W. Keese of the Texas Agricultural Extension Service.

Gray said the tour, sponsored by the Agency for International Development, is to study the United States aid program to Ecuador, find what needs to be done to improve the program and to try to determine what role A&M and other land grant colleges may play in Ecuador's agricultural development.

The group will visit all parts of the country and study existing agricultural improvements, educational institutions for agriculture and the state of agricultural development generally, Gray said. The group's primary interest will be those factors affecting rural development.

★★★  
Capt. Bennett M. Dodson, superintendent of the Texas Maritime

Academy is in Seattle, Wash., week attending the American Merchant Marine Conference.

On the day preceding the conference, all maritime academy perintendents attended a conference concerning future plans for state maritime academies. The states having maritime academies are Massachusetts, Maine, New York and California. Delegates from these academies are present at the conference.

Topics being discussed are standardization of curriculum, the academies and the determination of needs for maritime academy graduates. According to Dodson, it is anticipated that there will be a great shortage of merchant marine officers in the five or six years.

★★★  
Dr. A. V. Moore of the Department of Dairy Science will talk here Saturday on the International Food Technologists Congress, which he attended in London, England.

The scientist's discussion will be heard during a meeting of the Texas Section of the International Food Technologists at 4 p.m. in the Heep Building.

Dr. E. E. Burns, A&M horticulturist, said the session will be followed by a social hour and a smorgasbord.

### A&M COLLEGE FANCY SMOKED HAM SPECIAL

SHANK END..... 49<sup>c</sup>/<sub>lb</sub> WHOLE.. 55<sup>c</sup>/<sub>lb</sub> BUTT END..... 59<sup>c</sup>/<sub>lb</sub>



Swift Premium Fancy  
**FRYERS 28<sup>c</sup>/<sub>lb</sub>**

Swift Premium Sliced Bacon . . . . . Lb. 59c  
Swift Premium Sliced Bologna . . . . . Lb. 39c  
Swift Lean Pork Ribs . . . . . Lb. 29c  
Rath Pressed Ham . . . . . Lb. 49c

Maxwell House

**COFFEE** lb. 59c

**Pillsbury FLOUR** 5 lb. bag 39c

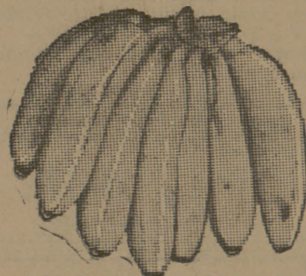
Washburn

**PINTO BEANS** 2 lb. bag 19c

PURINA GRADE A MEDIUM EGGS . . . . . 2 Doz. 89¢  
SANITARY OR BORDEN'S FRESH MILK . . . . . Gal. Jug 69¢  
FRESH CELLO BREAD . . . . . 2 Large Loaves 49¢  
DUNCAN HINES CAKE MIXES . . . . . 3 Boxes \$1.00  
SUNNYVALE FROZEN ORANGE JUICE . . . . . 7 Cans \$1.00  
BANQUET MEAT PIES, Beef, Chicken or Turkey . . . . . 5 For \$1.00  
SEAPAK FISH STICKS . . . . . 3 8 Oz. Pks. \$1.00  
BORDEN'S BISCUITS . . . . . 11 Cans \$1.00  
BLUE SEAL OLEO . . . . . 6 Lbs. \$1.00  
TOPKICK DOG FOOD . . . . . 12 Cans \$1.00  
BORDEN'S STARLAC MILK . . . . . Big 12 Qt. Size \$1.00

Golden

**BANANAS** Lb. 9c



California Potatoes . . . . . 10 Lbs. 39c  
Fancy Red Delicious Apples . . . . . Lb. 19c  
Crisp Green Celery . . . . . Stalk 15c  
Fresh Green Onions . . . . . Bunch 5c

**Winn's** YOU CAN'T LOOSE AT WINN'S  
**SUPER MARKET**

WE RESERVE THE RIGHT TO LIMIT QUANTITIES. PRICES GOOD THRU SATURDAY, OCTOBER 6.

## — Libby's Foods —

BEEF STEW . . . . . 2 Lg. 24 Oz. Cans \$1.00  
CHOPPED BEEF . . . . . 2 12 Oz. Cans \$1.00  
POTTED MEAT . . . . . 5 Lg. Half Cans \$1.00  
VIENNA SAUSAGE . . . . . 5 Lg. Cans \$1.00  
SPAGHETTI & CHEESE . . . . . 6 No. 2 Cans \$1.00  
SPANISH RICE . . . . . 5 15 1/2 Oz. Cans \$1.00  
RIPE OLIVES, King Size . . . . . 3 No. 1 Cans \$1.00  
Dill, Kosher-Dill, or Sour PICKLES . . . . . 3 22 Oz. Jars \$1.00  
PICKLES, Sweet . . . . . 2 22 Oz. Jars \$1.00  
CATSUP . . . . . 5 14 Oz. Bottles \$1.00  
CATSUP . . . . . 3 20 Oz. Bottles \$1.00

### —LIBBY'S FRUITS & JUICE SPECIALS—

FRUIT COCKTAIL . . . . . 4 303 Cans \$1.00  
PEACHES, Sliced or Halves . . . . . 5 303 Cans \$1.00  
PEARS . . . . . 4 303 Cans \$1.00  
PINEAPPLE . . . . . 4 No. 2 Cans \$1.00  
PLUMS . . . . . 4 303 Cans \$1.00  
APPLE SAUCE . . . . . 5 303 Cans \$1.00  
WHOLE APRICOTS . . . . . 4 303 Cans \$1.00  
Apricot, Peach, Pear NECTAR . . . . . 3 Qt. Cans \$1.00  
ORANGE JUICE . . . . . 3 46 Oz. Cans \$1.00  
PINEAPPLE JUICE . . . . . 4 46 Oz. Cans \$1.00  
TOMATO JUICE . . . . . 4 46 Oz. Cans \$1.00

### —LIBBY'S VEGETABLE SPECIALS—

ENGLISH PEAS . . . . . 5 303 Cans \$1.00  
CUT GREEN BEANS . . . . . 5 303 Cans \$1.00  
WHOLE BLUE LAKE BEANS . . . . . 4 303 Cans \$1.00  
WAX BEANS . . . . . 4 303 Cans \$1.00  
FRESH GREEN LIMAS . . . . . 4 303 Cans \$1.00  
RED KIDNEY BEANS . . . . . 7 303 Cans \$1.00  
All Kinds BAKED BEANS . . . . . 7 14 Oz. Cans \$1.00  
Diced or Shoestring CUT BEETS . . . . . 7 303 Cans \$1.00  
Creamed Style or Whole Kernel CORN . . . . . 5 303 Cans \$1.00  
KRAUT . . . . . 7 303 Cans \$1.00  
FRESH BLACK EYE PEAS . . . . . 7 300 Cans \$1.00  
PEAS & CARROTS . . . . . 5 303 Cans \$1.00  
WHOLE POTATOES . . . . . 7 303 Cans \$1.00  
SPINACH . . . . . 7 303 Cans \$1.00  
SUCCOTASH . . . . . 5 303 Cans \$1.00  
WHOLE TOMATOES . . . . . 4 303 Cans \$1.00  
TOMATO SAUCE . . . . . 10 8 Oz. Cans \$1.00

SAVE  
**BIG BONUS STAMPS**



### STUDENT RATE MAGAZINE SUBSCRIPTIONS

Available through your College Store

PUBLICATION	SCHOOL TERM RATE	1 YEAR
Atlantic Monthly	3.50 (8 mo.)	8.50
Downbeat	3.50 (8 mo.)	5.00
Ebony	2.00 (8 mo.)	3.50
Esquire	2.00 (8 mo.)	6.00
Fortune		7.50
Holiday	1.80 (6 issues)	3.60
Life	2.00 (6 mo.)	2.98
Look		2.00
Negro Digest	2.40 (8 mo.)	4.00
New Yorker	3.00 (8 mo.)	
Newsweek	2.75 (34 wks.)	3.50
Reader's Digest		2.97
Reporter	2.50 (8 mo.)	4.50
Saturday Eve. Post	2.00 (25 issues)	3.00
Sports Illustrated	rates go up 1-1-63	4.00
Time	3.00 (8 mo.)	4.00

A NATIONAL ASSOCIATION OF COLLEGE STORES SERVICE

To: THE EXCHANGE STORE  
CAMPUS

Please enter my order for the following magazines on the current Student Rate. I am including the 2% State Tax currently collectable.

NAME \_\_\_\_\_  
St. Address or P. O. Box Number \_\_\_\_\_  
City \_\_\_\_\_ State \_\_\_\_\_ School \_\_\_\_\_  
Year of Graduation \_\_\_\_\_ Amount \_\_\_\_\_

**The Exchange Store**

"Serving Texas Aggies"