

YOUR DISTRIBUTOR FOR

- EICO KITS
- Garrard Changers
- HI-FI Components
- Tape Recorders

Use Our Time Payment Plan
BRYAN RADIO & TV
 TA 2-4862 1301 S. College Ave.

DR. G. A. SMITH
 OPTOMETRIST
 SPECIALIZING
 in EYE EXAMINATIONS
 and CONTACT LENSES

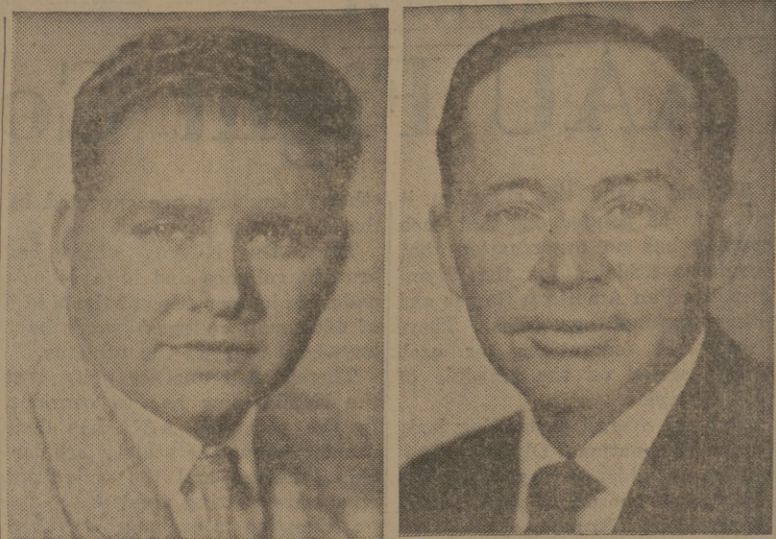
BRYAN OPTICAL CLINIC
 106 N. G. MAIN • BRYAN, TEXAS

SOSOLIK'S
 T. V., Radio, Phono., Car Radio
 Transistor Radio Service
 713 S. Main TA 2-1941

● ENGINEERING AND ARCHITECTURAL SUPPLIES
 ● BLUE LINE PRINTS
 ● BLUE PRINTS ● PHOTOSTATS

SCOATES INDUSTRIES
 608 Old Sulphur Springs Road
 BRYAN, TEXAS

HOME & CAR RADIO REPAIRS SALES & SERVICE
KEN'S RADIO & TV
 303 W. 26th TA 2-2819



In New Positions

Dr. Richard E. Wainerdi, left, is the new associate dean of engineering. He has been assistant to the engineering dean since 1959. Dr. John Q. Anderson, right, has been named head of the Department of English. He joined the A&M faculty in 1953.

MONEY BUNNY

Catherine Whitten Nice 'Loan Shark'

By T. S. HARROVER
 Battalion Managing Editor

The keeper of the loan fund goes by many names during the course of the school year.

At Easter she becomes the "Bunny with the Money", at Christmas she is known alternately as "Mrs. Scrooge" and "Mrs. Santa" (depending on whether she is collecting or lending), at Halloween she becomes the "Great Pumpkin", and at other times she is referred to as "Dear Old Mother" or "Mrs. Simon Legree".

Call her what you will, the Aggies' favorite "loan shark" will loan you up to twenty dollars if you present your fee slip and ID card to her.

She went on to tell about one 'emergency', an Aggie who came by and wanted to borrow \$1.25.

"He said he had to get a haircut. He didn't want money for anything else, though he didn't have a penny in his pockets."

She has heard as many different reasons for loans as she has made loans, she said.

"I don't ask why the student wants the money, because it is not a requirement for the loan, but students usually tell why they need it just in the course of conversation."

She has financed everything from corsages and dates to groceries and auto repairs.

Over 6,700 Loans

In the course of last year, over 6,700 loans were made to Aggies in need. Average loan was \$14.69.

"Our average contribution was 46c," she said. "We don't charge any interest or fees for loans and the only way the fund increases is through contributions and donations."

Mrs. Whitten and her fund hold dear places in many Aggies' hearts as the following statement by one graduate student indicates: "If I ever give any money to this place, it'll be right here," indicating the loan office.

The "Loan Ranger" has a wonderful sense of humor and proudly displays a small "caricature" given to her by Charles D. Johnson, a junior engineering student from San Antonio. She is depicted as a shark with pen and checkbook in hand—er, flipper—wearing a gold crown crested with a dollar sign, with bags and barrels of money strewn roundabout.

Poetry Is Hobby

She is well known to her patrons for her way with verse, also. Displayed in and around her office are small signs with witticisms and poems, mostly original.

One reads: "Some students drink at the fountain of knowledge — others just gargle."

Another: "How did the fool and his money get together in the first place?"



The Loan Shark

Pictured above is Mrs. Catherine Whitten, manager of the loan fund, as seen by her customers, several thousand Aggies. The drawing was made for her by one of her 'customers'.

W5AC

(Continued From Page 1)

ing operators to "Check in". Each operator who is listening to the network checks in by identifying himself by call number and location of his station.

The network control operator then announces the destination of that day's messages and asks the listening operators with stations at those destinations to stand by. He then contacts the ham who signed in for Dallas, say, and

gives him the messages for that city. He does the same for each city or area for which he has a message and a listening operator.

Frequently, the network operator has a message to be transmitted to a point for which no operator signed in. In such a case, he asks the aid of those who have contacted him by signing in and are nearer the destination than the control station. In this way, a message may possibly be relayed through 3, 4, or even 5 radio operators before finally reaching its destination.

SEE Firestone

For the Greatest TIRE VALUES to be found-Anywhere!

WHILE STOCKS LAST... SUPER DISCOUNTS on one-or-two-of-a-kind TIRE SPECIALS

- ★ tires with recently discontinued tread designs
- ★ tires taken off new cars with virtually no wear
- ★ wide selection of used tires... save in sets

LOW PRICES ON ALL TIRES

Just say "Charge It" TAKE MONTHS TO PAY

Whatever your tire needs might be... **SEE US NOW!** We have the tire for you

Every New Firestone Car Tire Carries A **ROAD HAZARD GUARANTEE** of 12 to 36 MONTHS Honored in all 50 States and Canada

Every new Firestone tire is **GUARANTEED**

1. Against defects in workmanship and materials for the life of the original tread.
2. Against normal road hazards (except repairable punctures) encountered in everyday passenger car use for the number of months specified. Repairs made without charge. Replacements prorated on tread wear and based on list prices current at time of adjustment.

BUY NOW... Get 1st CHOICE

ALL TIRES MOUNTED FREE

Labels: NYLONS RAYONS, Tube-Type Tubeless, Whitewalls Blackwalls, ANY SIZE

HERE-every day is the day to SAVE on fine foods!

We Reserve The Right To Limit All Sales

- GROCERIES -	- FROZEN FOODS -
Hunts—300 Cans Fruit Cocktail 3 For 59c	Morton—22-Oz. Apple, Cherry or Peach PIES 29c
Hunts—46-Oz. Cans Tomato Juice Can 25c	Sunshine State—6-Oz. Orange Juice 6 For 89c
Hunts—14-Oz. Bottles CATSUP 2 For 39c	Tennessee—10-Oz. Sliced Strawberries 2 For 39c
Folgers COFFEE 1-Lb. 59c	Taste-O-Sea—8-Oz. Fish Sticks 29c
Folgers—Instant COFFEE 10-Oz. Jar 99c	- MARKET -
Nabisco—12-Oz. Vanilla Wafers Carton 29c	Deckers—Tall Korn Sliced Bacon 1-Lb. 57c
Gold Medal—5-Lb. Bags FLOUR Bag 39c	Wisconsin—Medium Aged Cheddar Cheese 1-Lb. 59c
Snowdrift SHORTENING 3-Lb. Can 59c	Hormels—Dairy Brand FRANKS 1-Lb. 53c
Hersheys—16-Oz. Cans Chocolate Syrup 2 For 39c	Hormels—3-Lb. Canned Hams Each \$2.69
Pet Brand—Tall Cans MILK 7 For \$1.00	Swifts—Premium Sliced Bacon 1-Lb. 67c
Libbys—300 Cans Fresh Blackeye Peas 2 For 29c	Bordens Biscuits 2 For 15c
Libbys—No. 1/2 Cans Vienna Sausage 3 For 59c	Bordens—Santa Maria Milk Gallon Plus Deposit 68c
Libbys—No. 2 1/2 Cans Peach Halves Can 25c	Loin Steak 1-Lb. 79c
Libbys—12-Oz. Pineapple Juice 3 For 29c	T-Bone Steak 1-Lb. 79c
Pink Beauty—No. 1 Tall Cans SALMON Can 69c	Meaty Short Ribs 1-Lb. 39c
	- PRODUCE -
	Jumbo Lettuce 2 For 25c
	Celery Stalk 15c
	Carrots Cello Bag 10c
	Porter Tomatoes 2-Lbs. 25c

GEO. SHELTON INC.

COLLEGE AVE. AT 33rd. FREE PARKING TA 2-0139 - TA 2-0130

CHARLIE'S FOOD MARKET

NORTH GATE —WE DELIVER— COLLEGE STATION

SPECIALS GOOD THURSDAY AFTERNOON, FRIDAY, AND SATURDAY, AUGUST 16 - 17 - 18