

## Five-Day Safety Seminar Held By Extension Service

When properly handled, radioactive materials can do nothing but good for the future of industry, Jack V. Walker, instructor in the Department of Nuclear Engineering, told the first Industrial Accident Control Seminar.

Sponsored by the Engineering Extension Service, the five-day safety seminar has William A. Dow, instructor of Supervisory Development as chairman.

The meeting has attracted 24

representatives from major industries in the U. S.

"With the increased industrial usage of radioactive materials, it will be necessary that safety supervisors realize the precautions which must be observed in their handling."

"Most routine industrial radioactive levels are relatively low with their sources encapsulated in strong containers. These are relatively safe unless the capsules are accidentally ruptured," Walker stated.

Pointing out the high safety record maintained by the users of radioactive materials, he said that the use and control of these materials has become a well-regulated science.

Although the majority of applications for radioactive materials are presently limited to inspection and quality control, the Atomic Energy Commission estimated that American industry saved over \$500 million last year through their use.

One of the widest industrial uses for atomic radiation is found in gauging the thicknesses of paper, plastic and metal, Walker said.

## BSU Delegates To Represent Aggies

The state-wide 1962 BSU (Baptist Student Union) Spring Planning Conference will be held at Lakeview Assembly, near Palestine, Friday through Sunday.

"Disciplines of Christian Student Leadership" will be the theme for the conference. Special music will be presented by BSU choirs from North Texas State, East Texas State, University of Corpus Christi and the Spring Planning Conference Choir.

The conference starts with registration at 1:30 Friday afternoon and closes with the noon meal Sunday. Cost will be \$8.50, which includes two nights, six meals and insurance.

Over 850 students from more than 60 schools are expected to attend this conference. A&M's BSU hopes to send 50 students, an increase from 43 over last year.

A&M BSU students have challenged Texas Tech's BSU to a game of flag football, which will be played during the conference. The Tech team currently reigns as the intramural champs at Lubbock.

Additional information concerning what to bring, location of the conference and rides may be obtained at A&M's BSU center. Arrangements for getting military students out of drill will be made.



DR. WILLIAM G. YOUNG ... UCLA prof speaks here

## UCLA Chemist To Speak Here

A chemist and vice chancellor of the University of California, Los Angeles, Dr. William G. Young, will speak here Wednesday at 2 p.m. in Room 231 of the Chemistry Building, sponsored jointly by the Welch Foundation and the college.

"Recent Development in Alkyl Rearrangements" is Young's announced topic. The lecture will deal with an aspect of organic chemistry.

Young, a native of Colorado, received his doctorate from the California Institute of Technology in 1929. He was an American Petroleum Institute Fellow and du Pont Fellow. He received his B.A. and M. A. degrees from Colorado College in 1924 and 1925 respectively.

While studying toward the doctorate he was an assistant, coastal lab. division of plant biology, Carnegie Institution, for two years.

He was a National Research Council fellow at Stanford in 1929-30 and then became an instructor at UCLA. He has been a professor of chemistry at UCLA since 1943, and in 1940-48 was chairman of the Department of Chemistry. He served as Dean of the Division of Physical Sciences from 1946 until 1957, when he was made vice chancellor.

## THE BATTALION

Friday, April 27, 1962

College Station, Texas

Page 3

# Indian Movie Star Slates Visit, Tour Of The Campus

A widely-known motion picture and theater actor and producer in India is visiting the A&M campus Friday through next Tuesday.

He is V. C. Sivaji Ganesan, 34, of Madras.

The Indian is making his first trip to the United States and will travel across the nation. He arrived in New York April 8 and will continue his travels in the U. S. until June 3, when he departs from Honolulu, Hawaii.

Ganesan is visiting this country as a participant in the Foreign Leader Program of the Bureau of Educational and Cultural Affairs of the U. S. Department of State.

His stop-over at College Station has two main purposes. He will tour A&M's teaching and research facilities because of his non-professional farming interest, and he plans to visit a long-time acquaintance, Richard Arnold of the Department of Plant Sciences.

Arnold spent 14 years in India with an oil firm. He and the actor often went on big game hunts together. The Indian will stay in the Arnold home at 723 Shady Lane in Bryan.

Ganesan also plans a two-day visit of Comanche in Central West Texas.

Jack Gray, co-ordinator of the Foreign Programs Office, said a coffee has been set for 4-5:30 p. m. Saturday in the Memorial Student Center in order that faculty, staff and students can meet the visitor.

Although Ganesan can speak and

understand English, he will be accompanied by a Department of State escort officer and interpreter. He also will be accompanied by V. Emberumanar Chetty, former sheriff of Madras and manager of the Madras Chamber of Commerce; and Dennis H. Kux, American consul at Madras.

Ganesan's primary interest is in the motion picture and television industry and the theater. India is second only to the United States in motion picture production.

While in the U. S., he will study motion picture and television pro-

duction and talk with producers, directors, actors and technicians.

### ELECT

W. D. (Davis) Burley

Your District Clerk

- Attended Texas A&M College three years.
- U. S. Armed Forces, four year (World War II)
- Veterans Service Officer, Brazos County ten years.
- Chief Deputy, office of County Tax Assessor-Collector, three years.

YOUR VOTE WILL BE APPRECIATED MAY 5

(Paid Political Ad)

## 98 Freshmen Initiated To Phi Eta Sigma

A total of 98 freshmen were eligible for membership in Phi Eta Sigma, the national freshman honor fraternity, as a result of their fall, 1961, record.

A candidate for membership into the fraternity must have posted a grade point ratio of 2.5 or better in the first semester of his freshman year or have attained a 2.5 GPR by the end of his first year in school.

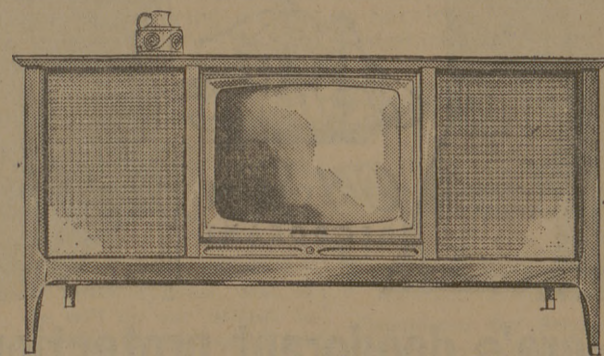
The Fall 1961 officers taking part in the initiation were President - Thomas D. Easley, sophomore science major from Grand Prairie; Vice President - Kenneth A. Radde, sophomore animal science major from Meridian; Secretary - Howard Head, sophomore pre-veterinary medicine student from Richardson; Treasurer - Paul A. Dresser Jr., sophomore liberal arts major from Houston; Historian - Thomas M. Ashy, sophomore science major from Beaumont.

Incoming officers for the Spring 1962 year are President - Woodrow L. Bacica Jr., freshman engineering major from Guy; Vice-President - Garry Lee Tisdale, freshman pre-law major from Tyler; Secretary - Michael E. Durbin, freshman mathematics major from Dallas; Treasurer - Ronnie Joe Zappe, freshman chemical engineering major from Houston; Historian - Oscar Sotelo, freshman pre-medicine major from McAllen.

Phi Eta Sigma members will hold a spring banquet here April 24.

The A&M Chapter of Phi Eta Sigma was founded in 1949 and is advised by C. H. Ransdell, assistant to the Dean of Engineering and Dr. J. W. Dobson, professor in the Biology Department.

## 3-in-1 HOME ENTERTAINMENT By Curtis Mathes



Deluxe 23" TV AM-FM Radio with AFC Stereo Hi-Fidelity Phono — Handwired power transformer chassis — Top tuning — Mahogany-Walnut slightly higher.

Only **\$299<sup>95</sup>** With Trade

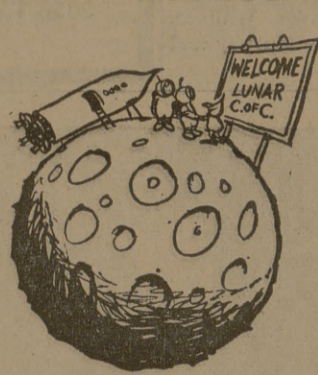
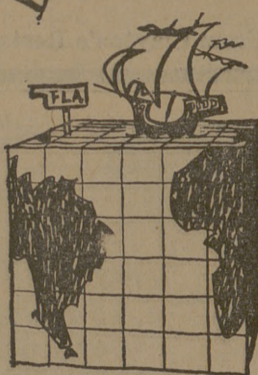
Up to 3 years to pay  
First Payment in June

## Gil's Radio & TV

2403 S. College TA 2-0826

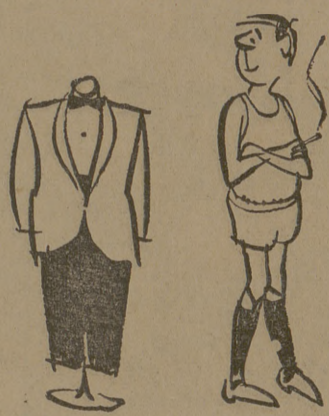
## Check your opinions against L&M's Campus Opinion Poll #21

1 Which would take more courage?



ship to the New World (in 1492)  rocket to the moon (in 1967)

2 Is it true that "clothes make the man?"



Yes  No  Sometimes

3 How did you choose your present brand?



"Smoked around" till I found it  Stuck with the one I started with

## Get Lots More from L&M

L&M gives you MORE BODY in the blend, MORE FLAVOR in the smoke, MORE TASTE through the filter. It's the rich-flavor leaf that does it!

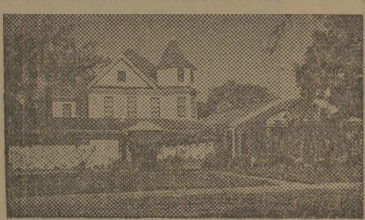


HERE'S HOW MEN AND WOMEN AT 56 COLLEGES VOTED:

Stuck with it	17%	16%
Smoked around	83%	84%
Sometimes	55%	54%
No	31%	39%
Yes	14%	7%
New World	73%	78%
Men	27%	22%
Women		

L&M's the filter cigarette for people who really like to smoke.

# The Church ... For a Fuller Life ... For You ...



Hillier Funeral Home  
BRYAN, TEXAS  
502 West 26th St.  
PHONE TA 2-1572

## STUDENT PUBLICATION

Campus and Circle Theatres College Station

The Exchange Store

"Serving Texas Aggies"

## CALENDAR OF CHURCH SERVICES

**A&M CHRISTIAN CHURCH**  
8:30 A.M.—Coffee Time  
9:45 A.M.—Sunday School  
11:00 A.M.—Morning Services

**FIRST BAPTIST CHURCH**  
9:40 A.M.—Church School  
11:00 A.M.—Worship  
6:15 P.M.—Training Union  
7:15 P.M.—Worship

**OUR SAVIOUR'S LUTHERAN CHURCH**  
8:15 & 10:45 A.M.—The Church at Worship  
9:30 A.M.—Bible Classes For All  
Holy Communion—First Sunday Each Month

**FAITH CHURCH UNITED CHURCH OF CHRIST**  
9:15 A.M.—Sunday School  
10:30 A.M.—Morning Worship  
7:30 P.M.—Evening Service

**A&M PRESBYTERIAN CHURCH**  
9:45 A.M.—Church School  
11:00 A.M.—Morning Worship

**CHRISTIAN SCIENCE SOCIETY**  
9:30 A.M.—Sunday School  
11:00 A.M.—Sunday Service  
8:00 P.M.—Wed., Evening Service  
10:00 A.M.—12 Noon Tuesdays—Reading Room  
7:00-8:00 P.M.—Wed., Reading Room

**UNITARIAN FELLOWSHIP**  
4:00-5:00 P.M.—Friday School, YMCA  
8:00 P.M.—First four Sundays of each month—Fellowship Meeting, Call VI 6-5888 for further information.

**CHURCH OF JESUS CHRIST OF LATTER DAY SAINTS**  
26th East and Coulter, Bryan  
8:30 A.M.—Priesthood Meeting  
10:00 A.M.—Sunday School  
6:30 P.M.—Sacrament Meeting

**A&M CHURCH OF CHRIST**  
9:45 A.M.—Bible Classes  
10:45 A.M.—Morning Worship  
6:45 P.M.—Bible Class  
7:15 P.M.—Evening Service

**ST. MARY'S CATHOLIC CHAPEL**  
Sunday—Masses 7:30, 9:00 and 11:00 A.M.  
Weekday—Masses 6:30 A.M., Monday, Wednesday, Friday and Saturday.  
Confessions—Saturday, 6:30 to 7:30 P.M. and before all masses  
Rosary and Benediction—Wednesday, 5:20 P.M. Tuesday and Thursday

**CHURCH OF THE NAZARENE**  
10:00 A.M.—Sunday School  
11:00 A.M.—Morning Worship  
6:30 P.M.—Young People's Service  
7:30 P.M.—Preaching Service

**COLLEGE HEIGHTS ASSEMBLY OF GOD**  
9:45 A.M.—Sunday School  
11:00 A.M.—Morning Worship  
6:30 P.M.—Young People's Service  
7:30 P.M.—Evening Worship

**A&M LUTHERAN CHURCH (Missouri Synod)**  
10:00 A.M.—Aggie Bible Class  
11:00 A.M.—Morning Worship  
Wednesdays 7:15 P.M.—Gamma Delta

**A&M METHODIST CHURCH**  
9:45 A.M.—Sunday School  
10:55 A.M.—Morning Worship  
6:30 & 6:00 P.M.—MYF Meetings  
7:15 P.M.—Evening Worship

**ST. THOMAS EPISCOPAL CHURCH**  
Sundays 8:00 A.M.—Holy Communion; 9:15 A.M.—Family Service & Church School; 11:00 A.M.—Holy Communion 1st & 3rd Sundays, Morning Prayer 2nd & 4th Sundays; 7:00 P.M. Evensong.  
Wednesdays 6:30 & 10:00 A.M.—Holy Communion with Laying on of Hands  
Saints Days 10:00 A.M.—Holy Communion  
Wednesdays 7:10 P.M.—Canterbury; 8:30 P.M. Adult Bible Classes

College Station's Own Banking Service

College Station State Bank

NORTH GATE

Central Texas Hardware Co.

BRYAN

- HARDWARE
- CHINAWARE
- CRYSTAL
- GIFTS

Sure Sign of Flavor



SANITARY Farm Dairies

Lilly

ICE CREAM MELLORINE SHERBERT

City National Bank.

Member FEDERAL DEPOSIT INSURANCE CORPORATION

Bryan

Bryan Building & Loan Association

BRYAN