

# Report Explores School Shelters

The feasibility of using limited shelters for physical education programs in elementary, junior high and senior high schools instead of expensive poorly designed gymnasiums is explored in a report just released jointly by the Texas Engineering Experiment Station and Educational Facilities Laboratories, Inc., New York.

The report, "Shelter for Physical Education," culminates a research project conducted by the Architectural Research Group of the Texas Engineering Experiment Station, whose research in lighting, ventilation, sound and other environmental factors over the past 13 years has drawn nationwide attention.

The factors most affecting the initial cost and the type of facility are the variability of the climate and the degree of utilization desired.

The research group suggested that a high per cent of utilization will result where school and recreation sites are combined for year around use by both students and the public. The intensive use of the space implies increased economy as well as a more versatile shelter facility.

The limited shelters research at the station was sponsored by Educational Facilities Laboratories, Inc., with a financial grant administered through the A&M Research Foundation. William G. Wagner, research architect, is author, with Ben H. Evans, architectural research coordinator, and Matthew A. Nowak, research physicist, acting as co-authors.

The study covers several technical aspects of climate and human comfort, physical education programs and possible directions for the design of physical education shelters. Presented as the basic criterion for determining the feasibility of a limited shelter is the adaptability of the facility to physical education activities.

According to the investigation, the elementary school program offers the best opportunity to exploit the limited shelter approach; the short periods, clothing adapted to the climatic conditions and the basic types of activities are well-suited to the semi-protected outdoor space.

At the junior high level the program is no less effective. At the high school level, the research group found, the introduction of new activities and increased emphasis on maximum performance suggest greater refinement of the shelter, with different areas having different degrees of comfort controls.

The shelter facility as explored in the study can vary from little more than a basic planting development to a space involving fairly complex landscaping, architectural and mechanical elements.

Copies of the report are available from the Engineering Experiment Station.

McGuire has been invited to serve on a panel with Dr. Norris G. Davis, moderator of the forum; Bo(wling) Byers, Austin correspondent for the Houston Chronicle, and Olin Hinkle, associate professor for the School of Journalism at the University of Texas.

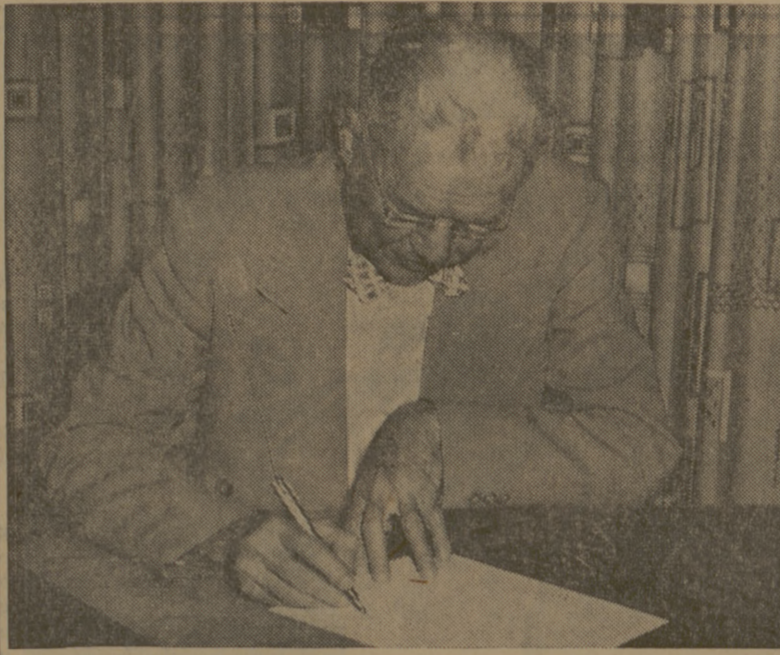
## Journalism Head Named To Forum

Delbert McGuire, head of the Department of Journalism, has been invited to the second annual John H. Johnson Journalism Forum at Blackshear High School, Odessa, Friday, Oct. 20.

The panel will discuss public affairs reporting, teaching of journalism and research in the journalism workshop.

The theme of the program this year, which is sponsored by the John H. Johnson Chapter of the Quill and Scroll Society, is "Community Service Through Communication Careers."

Other guests will be Andrew T. Hatcher, associate press secretary for President Kennedy, and John H. Hicks, reporter for the St. Louis (Mo.) Post-Dispatch.



**Busy Mayor**  
College Station's busy mayor, Ernest Langford, signs a proclamation designating yesterday as Columbus Day. Langford has been active in College Station city government since 1938. (Photo by Benny Gillis)

## YMCA Fish Camp Delegates Gather For Fish Fry

One hundred fifteen freshmen who attended the YMCA Freshman Camp at Lakeview Methodist Camp early in September gathered for the first time since the beginning of school for a fish fry at Hensel Park last night.

Dean of Instruction William J. Graff moderated a panel discussion on "If I were a freshman again I would..." Serving on the panel were Maj. Robert M. Peach, Corps Chaplain Gary Liveley, Camp Counselor Bill Barnhart and Dr. Harry Kunkel of the Department of Biochemistry and Nutrition.

The panel discussion lasted 15 minutes and was followed by 20 minutes of discussion.

**NOW OPEN**  
**Dorothy's Beauty Shop**  
302 Church St. VI 6-7475

**24 HOUR Delivery Service**  
On Black & White Roll Film  
**A&M PHOTO**  
North Gate

# The Church . . . For a Fuller Life . . . For You . . .

## CALENDAR OF CHURCH SERVICES

<b>ST. MARY'S CATHOLIC CHAPEL</b> Sunday—Masses 7:30, 9:00 and 11:00 A.M. Weekday—Masses 6:30 A.M., Monday, Wednesday, Friday and Saturday. Confessions—Saturday, 6:30 to 7:30 P.M. and before all masses Rosary and Benediction—Wednesday, 8:00 P.M.—First four Sundays of each month—Fellowship Meeting, Call VI 6-5888 for further information.	<b>BETHEL LUTHERAN CHURCH</b> (Missouri Synod) 8:15 A.M.—Morning Worship 9:30 A.M.—Church School 10:45 A.M.—Morning Worship <b>CHURCH OF THE NAZARENE</b> 10:00 A.M.—Sunday School 11:00 A.M.—Morning Worship 6:30 P.M.—Young People's Service 7:30 P.M.—Preaching Service <b>CHURCH OF JESUS CHRIST OF LATTER DAY SAINTS</b> 26th East and Coulter, Bryan 8:30 A.M.—Priesthood Meeting 10:00 A.M.—Sunday School 6:30 P.M.—Sacrament Meeting <b>ST. THOMAS EPISCOPAL CHURCH</b> Sundays 8:00 A.M.—Holy Communion; 9:15 A.M.—Family Service & Church School; 11:00 A.M.—Holy Communion 1st & 3rd Sundays, Morning Prayer 2nd & 4th Sundays; 7:00 P.M. Evensong. Wednesdays 6:30 & 10:00 A.M.—Holy Communion with Laying on of Hands Saints Days 10:00 A.M.—Holy Communion Wednesdays 7:10 P.M.—Canterbury; 8:30 P.M. Adult Bible Classes	<b>FAITH CHURCH UNITED CHURCH OF CHRIST</b> 9:15 A.M.—Sunday School 10:30 A.M.—Morning Worship 7:30 P.M.—Evening Service <b>COLLEGE HEIGHTS ASSEMBLY OF GOD</b> 9:45 A.M.—Sunday School 11:00 A.M.—Morning Worship 6:30 P.M.—Young People's Service 7:30 P.M.—Evening Worship <b>A&amp;M METHODIST CHURCH</b> 9:45 A.M.—Sunday School 10:45 A.M.—Morning Worship 5:30 & 8:00 P.M.—MYF Meetings 7:00 P.M.—Evening Worship <b>OUR SAVIOUR'S LUTHERAN CHURCH</b> 8:15 & 10:45 A.M.—The Church at Worship 9:30 A.M.—Bible Classes For All Holy Communion—First Sunday Each Month <b>A&amp;M PRESBYTERIAN CHURCH</b> 9:45 A.M.—Church School 11:00 A.M.—Morning Worship <b>FIRST BAPTIST CHURCH</b> 9:40 A.M.—Church School 11:00 A.M.—Worship 6:15 P.M.—Training Union 7:15 P.M.—Worship
--	--	--



Hillier Funeral Home

**BRYAN, TEXAS**  
502 West 26th St.  
PHONE TA 2-1572

**Campus and Circle Theatres**  
College Station

College Station's Own Banking Service  
**College Station State Bank**  
NORTH GATE

**Central Texas Hardware Co.**  
BRYAN  
• HARDWARE  
• CHINAWARE  
• CRYSTAL  
• GIFTS

**STUDENT PUBLICATIONS**  
Sure Sign of Flavor  
  
**ICE CREAM**

**ICE CREAM Lilly**  
Member FEDERAL DEPOSIT INSURANCE CORPORATION  
Bryan  
"A Nutritious Food"



**THE CHURCH FOR ALL . . . ALL FOR THE CHURCH**  
The Church is the greatest factor on earth for the building of character and good citizenship. It is a storehouse of spiritual values. Without a strong Church, neither democracy nor civilization can survive. There are four sound reasons why every person should attend services regularly and support the Church. They are: (1) For his own sake. (2) For his children's sake. (3) For the sake of his community and nation. (4) For the sake of the Church itself, which needs his moral and material support. Plan to go to church regularly and read your Bible daily.

Sunday Ecclesiastes 1:12-18	Monday Matthew 6:19-24	Tuesday Matthew 6:25-34	Wednesday Esther 6:5-13
Thursday Psalms 1:1-6	Friday Matthew 24:32-42	Saturday Mark 8:34-38	

Copyright 1961 Keister Adv. Service, Inc., Strasburg, Va.

**The Exchange Store**  
"Serving Texas Aggies"

**Bryan Building & Loan Association**  
BRYAN

**City National Bank**  
Member FEDERAL DEPOSIT INSURANCE CORPORATION  
Bryan

**Miss Sports Car**  
Gloria Saragosa, a shop-a-holic at Sam Houston State College from Houston last night was named Miss Bryan Sports Car for this weekend's sports car races at the former Bryan Air Base. Miss Saragosa will present trophies to the 12 race winners. Runners-up were Rosemary Howell of Bellaire and Sylvia Malain of Houston. The two runners-up are also Sam Houston students. (Photo by Benny Gillis)

**Christmas Workshop**  
The Floriculture Section will conduct a Christmas Decorations Workshop this year. This workshop is designed to present the fundamentals and programs involved in preparing Christmas table arrangements, wreaths, door swags, corsages and other Christmas decorations with Christmas greens and ornaments.

Two separate sessions will be held. One from 7-11 p.m. Dec. 14 and the other Dec. 15 from 7-11 p.m.

# BATTALION CLASSIFIED

**WANT AD RATES**  
per line . . . . . \$4 per word  
per word each additional day  
Minimum charge—40¢  
**DEADLINE**  
1 p.m. day before publication  
Classified Display  
\$4 per column inch  
each insertion  
PHONE VI 6-6415

**FOR RENT**  
One bedroom house with garage, 902 E. 12th, Phone VI 6-7354. 1715  
One bedroom duplex, furnished, \$25.00, 6234. 1715  
Bachelor house, private, quiet. Single state student or professor preferred. \$25.00 after one. 417 Oak St. 1647

College Hills, available October 18. Drive across from A&M Golf course. Unusual Southeast one bedroom apartment, very nicely furnished. \$45.00 only, \$55.00 with utilities. Conditioned bedroom optional. Phone 64801 after 6 p.m., all day weekends. 1117n

Something nice in one bedroom furnished apartment, large room, plenty closets, 1 1/2 car garage. No dogs. 1334n. 1560.

Home with private entrance and private bath or without kitchen privilege. \$1,415.44 after 5 p.m. 1314n

**FEMALE HELP WANTED**  
Need care for 2 1/2 year old child in home 4 1/2 days weekly. Phone VI 6-5897 1712

**WILSON PHARMACY**  
Telephone VI 6-8020  
3822 Texas Avenue  
Bryan, Texas

**SOSOLIK'S**  
TV, Radio, Phono., Car Radio  
Transistor Radio Service  
205 S. Main TA 2-1941

**TYPEWRITERS**  
Rentals-Sales-Service-Terms  
Distributors For:  
Royal and Victor  
Calculators &  
Adding Machines  
CATES  
TYPEWRITER CO.  
209 S. Main TA 2-6000

**WORK WANTED**  
CHILD CARE hour, day or week. Balanced meals, fenced yard, playroom, creative activities and companionship of other children. Experienced, convenient to campus. Week \$10.00 (limit 5). VI 6-8685, 1565

Babysitting, day or night. TA 2-0044, 1219

**SPECIAL NOTICE**  
Music lessons - piano and instrument. I will give music lessons in my home and in the Crockett area in Bryan. Mrs. William D. Franklin, 6-B Project Housing, phone VI 6-6151. 1518

**FOR SALE**  
1955 Packard, "400", one owner, low mileage, fully equipped, good condition. See to appreciate. Call VI 6-4065 or TA 2-8819. 1617n

100,000 B.T.U. Payne central heating unit, used only one winter. \$100.00. Can be seen at 1011 Hereford after 4 p.m. VI 6-6024. 1519

Smith Corona manual typewriter, 1957 model, good condition, \$45.00. VI 6-5241. 1517n

**HOME & CAR RADIO REPAIRS SALES & SERVICE**  
**KEN'S RADIO & TV**  
303 W. 26th TA 2-2819

**EXPERT - GUARANTEED REPAIRS**  
• Small Home Appliances  
• Fans and Lamps  
• Television (All Makes)  
• Car Radios  
• Electric Razors & Clippers

**DOERGE RADIO & APPLIANCE SERVICE**  
3212 Doerge Street TA 2-0223  
(Behind Midway Repair Ser.)

Cash Available For Books, Slide Rules, & Etc  
5,000 AGGIES CAN'T BE WRONG  
**LOUPOT'S**

**OFFICIAL NOTICES**  
Official notices must be brought, mailed or telephoned so as to arrive in the Office of Student Publications (Ground Floor Y.M.C.A., VI 6-6415, hours 8-12, 1-5, daily Monday through Friday) at or before the deadline of 1 p.m. of the day preceding publication - Director of Student Publications.

All students who have transferred to A. and M. from another school this year are requested to report to the office of the Dean of Arts and Sciences, 208 Nagle Hall as soon as possible. 1617n

**DEGREE FILING DEADLINE SET FOR OCTOBER 27, 1961**  
Applications for degree (baccalaureate and advanced) are now being accepted in the Registrar's Office from all students who will complete their requirements for graduation by January 20, 1962. Advanced degree candidates must file application with both the Registrar's and the Graduate Dean's office.  
H. L. Heaton, Director of Admissions and Registrar 13114

Catcher Johnny Blanchard of the Yankees broke into organized baseball with Kansas City of the American Association in 1951.

**TV - Radio - Hi-Fi Service & Repair**  
**GILS RADIO & TV**  
TA 2-0826 2403 S. College

• ENGINEERING AND ARCHITECTURAL SUPPLIES  
• BLUE LINE PRINTS  
• BLUE PRINTS • PHOTOSTATS  
**SCOATES INDUSTRIES**  
608 Old Sulphur Springs Road  
BRYAN, TEXAS

**AGGIES NOTICE**  
For Your Auto Parts and Accessories At A Discount See Us - Gulfpride, Esso, Havoline, Sinclair Oils 31c Qt. RC Champion Sparkplugs 29c  
**DISCOUNT AUTO PARTS**  
Water Pumps - Generators - Starters - Fuel Pumps - Brake Parts - Carburetors. Just About Any Part & Accessories You Need For Your Car.  
Filter - 40% Discount  
**AT JOE FAULK'S**  
25th & Washington  
SAE 30 MOTOR OIL 15c Qt.