

CHS Tigers Meet Huntsville Friday

After being plagued with injuries all season, the A&M Consolidated Tigers will be at full strength Friday night when they

face the Huntsville Hornets in Huntsville.

Due to inexperience and injuries, Coach Jones' Tigers have made the winning column only once in its five starts this season. He is not discouraged by this because he said there had been tremendous improvement in several of his hopefuls.

Quarterback Russell Welch, son of famous Aggie player Barney Welch, has been improving greatly in the ball handling and passing departments recently, according to Jones.

In the line, Jones is pleased with the work of Charles Roerber, a senior center.

"Roerber is my strength in the middle of the line," Jones said.

Junior lineman, J. W. Parsons, is showing promise in the coaches eyes as he is looking more aggressive in practice.

The Tigers worked out in sweat-shirts yesterday and will do so the rest of this week to avoid injuries.

"We know that we'll be out-classed but we are going to show them we've got a team with lots of fight," said Jones.

Intramurals Begin With Five Sports

Intramurals began in earnest today with basketball, football, tennis, ping pong, and horseshoes scheduled.

Swimming qualification has already been completed in 400-foot freestyle relay, 300-foot individual freestyle and 100-foot butterfly.

In the 400-foot freestyle relay, the best time of 1:13.8 was turned in by Squadron 3 in class B. In class A and C, Squadron 7 was best with 1:10.4. In 300-foot freestyle, class B, Velasco of company 21 was first with 1:02.6; class A, and C, Furrer, a day student, with 1:02.6. In the 100-foot butterfly, class B, Murray of Squadron 13 with 1:19.3; class A and C, Howder of Squadron 2.

A&I's Javelinas Lead AP's Small College Football Poll

By The Associated Press
NEW YORK—Texas A&I College was ranked the top small college football team in the nation Wednesday in the first 1961 poll of Associated Press regional experts.

The Javelinas didn't draw a first place vote but had enough in the other placings to amass 35 points, on a 10-9-8 etc. basis.

Texas A&I got its second victory in as many games last week-

end in an impressive 27-13 showing against Trinity University.

Hillsdale College of Michigan is second with 27 points and is undefeated in two outings. Southeast Louisiana, 3-0 so far, collected 23 points for third while Southern Illinois is fourth with 19 points.

The rest of the top 10 include, in order, Humboldt State, Mississippi Southern, Pittsburgh, Kan., Northern Michigan, Lehigh and a tie for 10th between Newberry, S. C., College and Southern, La., University.

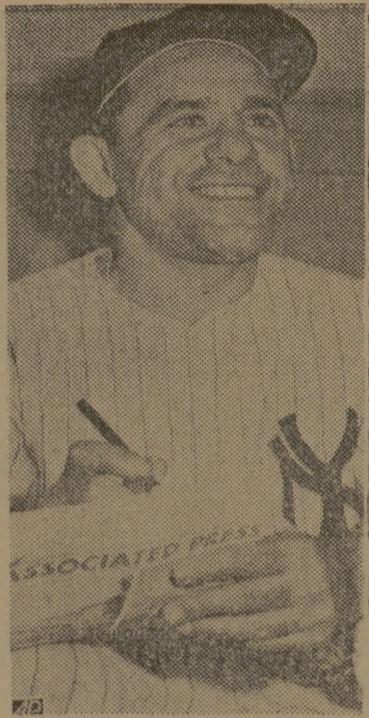
Hillsdale, Southeastern Louisiana and Lehigh all drew one first place vote each in addition to other support.

Hillsdale was idle last weekend, but already had beaten St. Joseph's, Ind., and St. Benedict's. Southeastern Louisiana defeated Corpus Christi 39-0 last week.

Others receiving votes for first place included Newberry, S. C., and Southern, La., University.

**Film
Cameras
Tape Recorders
Supplies**

A&M PHOTO
North Gate



Author! Author!
Yogie Berra, versatile New York Yankee catcher-outfielder, makes notes in Yankee Stadium dugout for a series of articles he will write on the World Series for The Associated Press. (AP Wirephoto)

THE BATTALION

Pro-Football Terms Sound Strange

By HAROLD V. RATLIFF
Associated Press Sports Writer

Clotheslining, audible, key, split end, tight end, red dog, blitzing, looping, flood pass—those terms come at you these days now that Texas has three professional football clubs.

The fan who has known only high school and college football undoubtedly is puzzled at these designations for what's going on on the field out there in your television set or in your radio.

Some fans make it a point to find out what the terms mean or figure them out from what they see. But some are not situated close enough to the action to go hunting for an explanation or can see exactly what's happening down there in the fury of play.

If Coach Tom Landry of the Dallas Cowboys says he has thrown a flood pass he means that all of the backs except the passer have gone down in one direction to catch the ball.

If Coach Hank Stram of the Dallas Texans speaks of the other team blitzing or shooting the gap or red dog it means the linebacker has rushed into the offensive backfield with the purpose of tackling the quarterback before he can pass.

When they talk of the umbrella defense it means a secondary defense where the four back fan out like an umbrella. Steve Owen, former coach of the New York Giants, perfected it.

Hearing footsteps—that's what a timid pass receiver hears when he has his back to a defender and is waiting for a pass.

Looping—a defensive maneuver in which the entire line moves laterally before charging. It confuses the blockers in their assignments.

Split end—the receiving end who is always flanked out to a stand-up position.

Tight end—the offensive end who always is lined up next to the offensive tackle—he may line up either left or right.

Safety valve—a spare receiver, usually the fullback, who blocks for the passer then swings away from the "pocket" for short passes when other receivers are covered.

Post pass—flanked receiver goes straight downfield, then cuts at angle over the middle toward the goal "posts."

Down and out—receiver goes straight down then cuts toward sidelines.

Z-in or Z-out passes—receiver goes down a few steps, executes a Z pattern of fakes then cuts in or out.

Swing pass (or flare pass)—pass to a back, usually the fullback, who runs a gentle arc parallel to the line of scrimmage and toward the flank.

Corner back—the two defensive backs stationed wide and closest to the line of scrimmage.

Safety—the deep defensive backs.

Clotheslining—strategy often used by linebackers against receivers—as receiver runs by, linebacker will hold his arm out head high, catching receiver on helmet or in neck and knocking him off balance. If the officials think the clothesliner has done it intentionally they can stick him with a personal foul.

Look-in pass—quick bullet pass to flanked receiver who cuts over the middle.

Stunting—defensive man changing positions almost until the ball is snapped.

Pocket—the circle of protection set up by blockers for a passer.

Buttonhook pass—receiver goes downfield and before he reaches defender executes a quick turn, stops to face passer and receives a bullet pass.

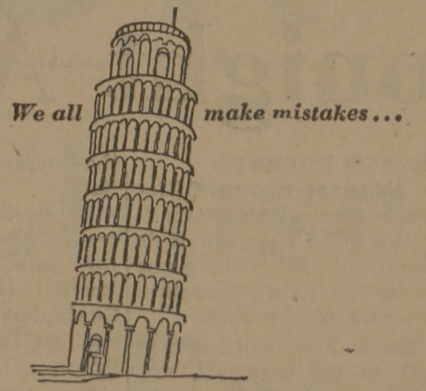
Audible (also called check-off or automatic)—the quarterback verbally changes huddle play at line of scrimmage after team has lined up.

Key—moves by members of offensive team which tip defensive men to what course of action they may take.

Taxi squad—men not on the official roster yet available if a player is injured. They are paid players just like the others and are carried if the club can afford it.

Now, ready to enjoy your pro football?

Swaps, now in stud at John Galbreath's Darby Dan Farm in Lexington, Ky., set three world records at Hollywood Park as a 4-year-old in 1956.



ERASE WITHOUT A TRACE ON EATON'S CORRASABLE BOND

Typing errors never show on Corrasable. The special surface of this paper makes it possible to erase without a trace—with just an ordinary pencil eraser. Results: clean-looking, perfectly typed papers. Next time you sit down at the keyboard, make no mistake—type on Corrasable!

Your choice of Corrasable in light, medium, heavy weights and Onion Skin. In handy 100-sheet packets and 500-sheet boxes. Only Eaton makes Corrasable.

A Berkshire Typewriter Paper

EATON PAPER CORPORATION PITTSFIELD, MASS.

Purchase Your

EATON'S CORRASABLE BOND Typewriter Paper

from

The Exchange Store

"Serving Texas Aggies"

Win \$100.00 a month

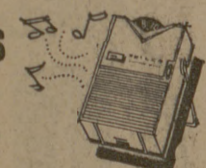
for the entire school year with
Sheaffer's "Pen Money" contest

2 FIRST PRIZES OF \$100 A MONTH



Winners (one man and one woman student) will receive a check for \$400 on Dec. 15th and \$100 a month beginning in January and ending in May.

25 SECOND PRIZES of a new Philco transistor radio



IT'S EASY TO ENTER—EASY TO WIN! HERE'S ALL YOU DO

Just tell us in 25 words or less, what you like most about Sheaffer's all-new \$2.95 Cartridge Fountain Pen. Write your entry in ink on any sheet of paper, enclose it with the top from a package of Skrip cartridges, and mail it to: Sheaffer "Pen Money" Contest, P.O. Box 4399, Chicago 77, Illinois. Entries accompanied with your name, address, school name and class must be received by November 7, 1961.

Entries will be judged on the basis of their believability and freshness of thought. Judges' decisions are final and all entries become the property of the W. A. Sheaffer Pen Company. None will be returned. In case of ties, duplicate prizes will be awarded.

Every college student in the United States may enter, except employees of W. A. Sheaffer Pen Company, its subsidiaries, its advertising agencies... the independent company judging entries... and members of their immediate families. Contest subject to federal, state and local regulations.

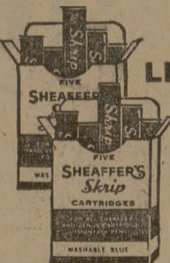
Winners will be notified by mail approximately four weeks after contest closes. List of winners available after close of contest if request is accompanied by stamped, self-addressed envelope.



Here are some of the things to keep in mind when you're writing about

Sheaffer's all-new cartridge fountain pen

- For smooth, easy writing, there's no substitute for a Sheaffer fountain pen.
- Loads like a rifle with leakproof cartridges of world famous Skrip writing fluid.
- Fills quick, clean, easy... just drop a Skrip cartridge into barrel.
- Fits easily into a shirt pocket... comes in a choice of five smart colors.



SPECIAL! LIMITED TIME ONLY

Pen and 98c worth of Cartridges FREE
\$3.93 Total Value for

\$2.95

SHEAFFER'S

© 1961, W. A. SHEAFFER PEN COMPANY, FORT WASHINGTON, IOWA
SHEAFFER PENS - MAJCO HEARING AIDS

ALL RIGHT FOR YOU!

Quality Variety Service Prices

-GROCERIES-

5-lb. Bags—Pillsburys FLOUR	Bag	39c
2-lb. Cartons—Pillsburys Pan Cake Mix	Carton	39c
24-Oz. Bottles—Staleys Pan Cake Syrup	Bottle	39c
18-Oz. Jars—Bama Peanut Butter	Jar	39c
Folgers—Mountain Grown COFFEE	1-lb.	69c
Folgers—Instant COFFEE	10-Oz. Jar	\$1.19
Nestles—Chocolate MORSELS	12-Oz. Pkg.	39c
No. 1/2 Flat—Tuxedo TUNA	2 Cans	39c
303 Cans—Rosedale Sweet Peas	2 Cans	29c
24-Oz.—Fiesta Queen Olives	Jar	59c
16-Oz. Bottles—Staleys Pop Corn Oil & 10-Oz. Can Jolly Time Pop Corn ..	The Tow For	49c
Nabisco Ritz Crackers	12-Oz. Pkg.	29c
No. 2 1/2 Cans—O'Sage Elberta Peaches	2 Cans	49c
3-lb. Cans—Mrs. Tuckers SHORTENING	Can	69c
303 Cans—Oregon Trail Blue Lake Whole Beans	2 Cans	49c

-FROZEN FOODS-

Libbys 9-Oz. Cut Green Beans	4	
10-Oz. Baby Whole Okra		
10-Oz. Green Peas	For	
10-Oz. Blackeye Peas		
10-Oz. Cut Golden Corn	89c	
12-Oz.—Patio Enchilada Dinners	Each	39c
Bordens MILK	1 Gallon Jug	85c
Bordens—Morning Glory BISCUITS	3 Cans	25c

-MARKET-

PEN FED BABY BEEF CUTS	
Pin Bone Loin Steak	1-lb. 59c
T-Bone Steak	1-lb. 79c
Round Steak	1-lb. 79c
Square Cut Shoulder Roast	1-lb. 59c
Deckers—Tall Korn Sliced Bacon	1-lb. 69c
Wisconsin—Medium Aged Cheddar Cheese	1-lb. 59c
Swifts Premium All Meat Franks	1-lb. 49c

-PRODUCE-

Cabbage	Lb. 5c
Bell Peppers	Lb. 10c
Delicious Apples	Lb. 15c
Texas Oranges	2 Lbs. 25c

SPECIALS GOOD THURSDAY AFTERNOON, FRIDAY, AND SATURDAY, OCTOBER 5 - 6 - 7

CHARLIE'S FOOD MARKET
NORTH GATE —WE DELIVER— COLLEGE STATION