

THE BATTALION

Back To School Edition

Section II

THURSDAY, SEPTEMBER 14, 1961

Page 1

A&M—Bigger Than You Think

More Than 8,000 Acres In Main College Campus

The A&M campus is a huge installation of buildings, parks, streets, farms, dormitories, an airport, hospitals (for people and animals), a nuclear reactor, modern apartments, monuments, homes and athletic facilities spread out over 8,657 acres of land in College Station and Bryan.

Most of this—4,392 acres west of the "main" part of the campus across the Southern Pacific and Missouri Pacific railroad tracks, and the 3,192-acre college plantation 10 miles southwest of College Station in the Brazos River bottomland—is primarily used for agricultural education and experimentation.

(However, the veterinary hospital, military reservation, Easterwood Airport, nuclear science center and several other "non-agricultural" departments are also located "across the tracks.")

The remaining 1,000 acres or so is that part of the campus most students see from day to day. It's the part where are located the dormitories, classroom buildings, drill fields and recreation facilities.

While some agriculture classroom and lab work is done on the "main" campus, the uplands west of the tracks are assigned to various agriculture departments for more extensive work.

Animal Husbandry

The Department of Animal Husbandry has 1,200 acres which is divided among the swine, sheep, beef cattle and horse centers. Approximately 300 pure bred cattle, 1,000 hogs, 250 sheep and 50 horses help carry out the department's main purpose of teaching and research.

Hereford, Angus and Brahma cattle; Rambouillet, Southdown, Hampshire and Suffolk sheep; Berkshire, Duroc, Hampshire, Chester White and Poland China hogs are some of the different breeds of livestock found at the centers.

Joining the swine center is the 154-acre poultry farm. The latest equipment and techniques in poultry industry are used here.

There are about 15,000 laying hens and 800 turkeys on the farm. Every year 75,000 to 100,000 chicks

(See COLLEGE on Page 7-II)

System Covers Texas With Research, Extension

One of the greatest educational, research and extension organizations in the South, the A&M College System was established in 1948.

The System is a vast, state-wide organization with over 6,400 full-time employees working in every one of Texas' 254 counties. The System is charged with the responsibility for educational, research and extension services in the broad fields of agriculture and engineering and in any other areas the Texas Legislature may assign it from time to time.

Roughly, the System is made up of nine major divisions—the main college at College Station, three other four-year colleges and five service organizations.

The Systems' four colleges are the A&M College of Texas, oldest publicly-supported institution of higher learning in the state; Prairie View A&M College at Prairie View; Arlington State College at Arlington, and Tarleton State College at Stephenville.

The five service organizations are the Agricultural Experiment Station, Texas Agricultural Extension Service, Texas Engineering Extension Service and the Texas Forest Service.

The System's 6,400 full-time employees work in every one of the state's 254 counties; its staff works on problems ranging from control in insects in the Piney Woods to control of evaporation (See SYSTEM on Page 7-II)

A&M Claims Long Military Tradition

Since 1876, when A&M first opened its doors with 40 students and six professors, it has had a military school.

The college has shouldered wholeheartedly its responsibilities for teaching military training under the national land-grant education system.

For many years A&M has had the largest military school in the United States.

At least two years of military training are required of all students, except veterans, physically handicapped, foreign nationals, men over 21 years of age and transfer students with more than 30 credit hours.

In World War I 52 former students died in military service.

Following the war the New York Sun, in an analysis of war participation by American colleges and universities, declared that A&M had furnished a greater proportion of its alumni as commissioned officers than any other school.

The Reserve Officers Training Corps was inaugurated at A&M in 1920. Since that year basic military training and understanding has been given to more than 41,000 men.

At this time training is offered (See MILITARY on Page 7-II)

Rudder, Harrington A&M's Top Men

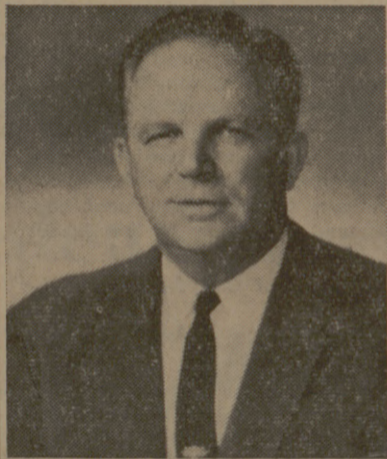
The two top "bosses" for A&M College and the A&M System are College President James Earl Rudder and System Chancellor M. T. (Tom) Harrington.

Both men were promoted to their present posts on the same day, July 1, 1959, by the System Board of Directors.

Harrington previously served as chancellor from 1947 to 1953. He assumed the dual role of president of the college and system when the chancellorship was abolished in 1953.

Rudder stepped up to the president's chair when Harrington was re-named chancellor. He had been vice president of the college since February of 1958.

The present chancellor began working at A&M as an instructor in the Department of Chemistry. He was promoted to assistant, then associate professor, full professor, assistant to the dean of the college, dean of arts and sciences, acting dean of the college, and finally, became the twelfth president of the college in 1950.



Earl Rudder
... president of college



M. T. Harrington
... chancellor of system



Yell Practice

What could be more fitting to introduce the section dealing with the men and spirit of Aggieland than a picture of yell practice? The scene, caught last year at one of the earlier yell practices in The Grove, typifies the spirit of the occasion. First pre-game yell practice this year will be a midnight yell practice Friday, Sept. 22, before the night game with the University of Houston Cougars in Kyle Field Saturday, Sept. 23, at 7:30 p. m.

Davis, Four Others, To Lead Yells

Jim Davis, senior business administration major from Mertzon, was named to the other Corps senior yell leader spot.

Civilian yell leader, elected April 28, will be Gene R. Anderson, '61.

Junior yell leaders will be Bill Tom Ralph, senior from Clifton, Brashears and Tom Nelson.

Welcome To A&M

Welcome to Texas A&M!

Welcome back to those of you who are old hands at being Aggies. And a special welcome to you who are about to embark on what should be the greatest adventure of your life—an A&M education.

Texas A&M is vast—over 8,000 acres in the main campus alone.

Texas A&M is an educational power—the A&M System includes four four-year colleges in addition to engineering and agricultural extension services throughout the state.

Texas A&M has a heart—there are 7,000 friendly Aggies here ready to go out of their way to show you what the Aggie Fraternity really means.

This section of the Back-To-School Edition of The Battalion is designed to show you your Texas A&M. It will take you around the land, through the facilities, and introduce you to the men who make your school the greatest university in the world.

Welcome Aggies to COURT'S Shoe Headquarters for TEXAS AGGIES

COLLEGE STATION'S LARGEST, FINEST SHOE STORE

In the Shoe Department, shoes are fitted by experienced shoemen, thus assuring you a proper fit. And, we guarantee you will be satisfied.

Be Sure To Check Our Genuine Shell Cordovan Shoes By TAYLOR MADE, Only \$20.95.

FEATURING SHOES BY:

PORTAGE
TAYLOR MADE
ROBLEE
PORT-OPED

See us for the widest selection of styles in College Station. You're sure to find just what you want. See for yourself!

Paratrooper Jump Boots With or Without Zippers.

Buy your shoes from Court's and get your heel taps FREE

WE MAINTAIN OUR OWN REPAIR DEPARTMENT TO SERVICE YOUR SHOES

ALL BRANDS POLISHES AND ACCESSORIES

SHOES REPAIRED WHILE YOU WAIT



COURT'S

"THE STORE WITH PERSONALIZED SERVICE"
NORTH GATE

Air Conditioned for Your Comfort

