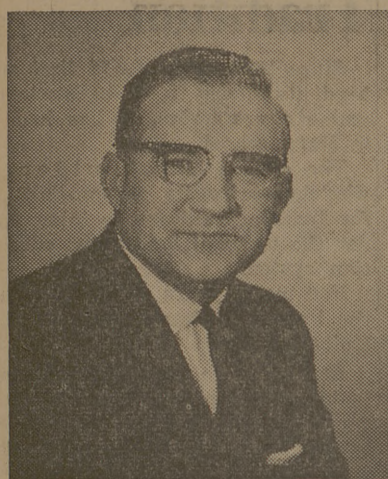


# Graff, Hall — Two Deans Take Place Of One



Wayne C. Hall  
... dean of graduate studies

With the appointment of Dr. William John Graff Jr. as dean of instruction in early August, both posts vacated by the retirement of Dr. J. B. Page (former dean of the college and graduate school) have been filled.

Soon after Page's retirement in June of 1960, the graduate school position was filled by Dr. Wayne C. Hall, then head of the Department of Plant Pathology.

The position of dean of instruction is a new one at A&M. Actually, two men, Dean Hall and Dean Graff, are doing the job formally administered by Page.

Graff, who says he plans to work closely with President Rudder and the deans of the four schools, said of his new duties: "Anything that pertains to academic excellence pertains to this job."

"I hope to represent the views of the faculty to President Rudder and represent the president to the faculty."

Graff, 38, graduated from A&M in 1945 with B. S. and M. S. degrees in mechanical engineering. He received his Ph. D. degree from Purdue University in 1951. He has taught at A&M, Purdue and Southern Methodist University.

During World War II, Graff was a first lieutenant navigator and radar operator in the Air Force.

A registered professional engineer, Graff is the author of several books on nuclear reactors and rockets and power plant operation.

Graduate School Dean Hall came to A&M in 1949 from the University of Kentucky. He joined the plant pathology staff as an assistant professor, and became head of the department and a full professor in 1958.

When Page left in 1960 to become dean of the graduate college at Iowa State University, Hall succeeded him.

Hall, 42, was born in Montana and received his B. S. degree from the Iowa State University in 1941. He received his M. S. degree in 1946, and his Ph. D. degree in 1948, both from Iowa State.

During World War II, Hall served as a lieutenant with the Navy in the Atlantic, European-African and Pacific theaters. He held the Purple Heart.

Hall is author or co-author of 75 scientific papers, reviews and laboratory manuals on plant physiology or biochemistry.



William John Graff  
... dean of instruction

## LOOKING FOR A FRIEND?

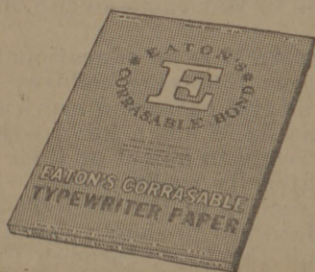


You'll find a good one in

## EATON'S CORRASABLE BOND

This fine typewriter paper that erases without a trace! Mistakes don't matter because an ordinary pencil eraser flicks off typewritten errors — like magic — no scars, scuffs or smudges are left to tattle-tale.

You and Corrasable will be "steadies" once you've tried this erasable, irreplaceable paper.



**EATON'S CORRASABLE BOND**  
A Berkshire Typewriter Paper

## Tough Job Ahead For Four School Deans

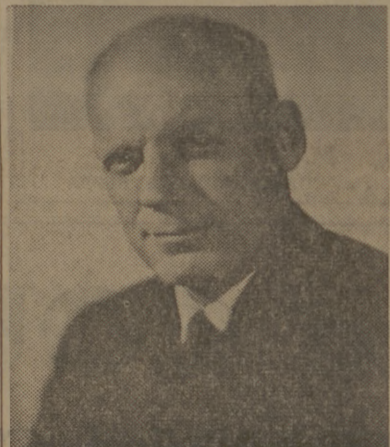
The deans of A&M's four schools — Agriculture, Arts and Sciences, Engineering and Veterinary Medicine — play an important role in the over-all operation of the college. Daily the deans must answer an avalanche of questions ranging from "How many hours must I take?" to "What must I do to change my major?"

But counseling with students is only part of the dean's job. He is also responsible for each of the departments and divisions within his school, and the department and division heads must answer to him.

Helping each of the deans is an assistant or associate dean. Both the dean and his assistants are here to help you. Drop by and meet them—they are good men to know.

### \*\*\* R. E. Patterson

Dr. R. E. Patterson became dean



Frank W. R. Hubert  
... arts and sciences

of the School of Agriculture in 1960.

Under Patterson's direction, four-year programs are offered in 12 major agricultural areas. In addition, four other departments in the school do not have four-year programs, but do offer courses basic to many of the major agriculture fields.

Last year 17 per cent of A&M's enrollment was in the School of Agriculture. In addition, veterinary medicine and agricultural journalism majors were enrolled in many agriculture classes without being in the school.

Patterson has been at A&M since 1934, as a graduate assistant in genetics, a research assistant for the Texas Agricultural Experiment Station, an assistant professor of genetics and animal husbandman for the experiment station, and now, dean of the School of Agriculture.

A native of Gueydan, La., Pat-



R. E. Patterson  
... agriculture

erson received his B.S. degree from Louisiana State University in 1934, his M.S. from A&M in 1936 and his Ph.D. from A&M in 1943.

Dr. R. C. Potts is assistant director of agricultural instruction. His office is Room 216, Herman F. Heep Building.

\*\*\*

### Frank W. E. Hubert

Dean of the School of Arts and Sciences, Dr. Frank W. R. Hubert, came to A&M in 1959. His office is in Nagle Hall.

Under Hubert's direction are 25 major courses, grouped under four broad categories of liberal arts, business administration, education and the sciences. In enrollment, Arts and Sciences is the second largest of A&M's four schools, surpassed only by the School of Engineering. During 1960-61, the school boasted 33 percent of the total college enrollment.

Hubert, 45, is a native of Milan

County. He received his B.A., M.A. and Ph.D. degrees from the University of Texas. He came to A&M from Orange, where he had been superintendent of schools.

Associate dean of arts and sciences is Dr. G. W. Schlesselman. His office is Room 208, Nagle Hall.

\*\*\*

### Fred J. Benson

In addition to his big job as dean of the School of Engineering, Fred J. Benson is also executive officer of the Texas Transportation Institute and a civil engineering professor. His office is in the Engineering Building.

Benson, who was named engineering dean in 1957, is in charge of the largest of A&M's undergraduate schools. The 13 four-year engineering programs, two five-year courses and eight five-year combined degree plans offered by the school claimed 41



Fred J. Benson  
... engineering



Alvin A. Price  
... veterinary medicine

per cent of A&M's student enrollment in 1960-61.

Benson joined the engineering faculty in 1937 as a civil engineering instructor. Since then he served as an assistant, associate and full professor.

A native of Grainfield, Benson received his B.S. degree from Kansas State College in 1935 and his M.S. from A&M in 1936.

Dr. C. H. Ransdell is the assistant to the dean of engineering. His office is Room 114, Engineering Building.

\*\*\*

### Alvin A. Price

Dr. Alvin A. Price is dean of the School of Veterinary Medicine. His office is in the Veterinary Medicine Building.

Dr. Price became dean of the only school for veterinarians in 1957. He received a B.S. degree in dairy husbandry from A&M in 1940, then, after a tour with infantry in the Middle East during World War II, he received the college in 1944. He earned a D.V.M. degree in 1949 and became an instructor in veterinary anatomy. In 1956 he received his Ph.D. degree in veterinary physiology. He is a native of Dublin.

Now, at 43, Dr. Price heads one of the 19 accredited schools of veterinary medicine in the United States. The school is a small one—accounting for only seven percent of the total enrollment each year. It's a choosy one too—enrollment in the first year of veterinary medicine (which must be preceded by two years of veterinary training or a B.S. degree) is highly limited.

Dr. E. D. McMurry is assistant to the dean of veterinary medicine. His office is Room 113, Veterinary Medicine Building.

## Brass Has Meaning

The distinctive Cadet Corps signia represents the ideal concept — "soldier, statesman, knightly gentleman." The signia represents the military tradition, the cadet's status as a statesman and the knight's helmet represents the knightly gentleman. The scroll, "Per Unum Vis," means Through Unity, Strength.

## The Exchange Store

"Serving Texas Aggies"

## Welcome Aggies

DINE OUT . . . . TONIGHT

### TUESDAY IS STEAK NITE!

Large T-Bone or Sirloin  
With Salad or Baked Potato..... \$1.90  
"All One Person Can Eat"

### WEDNESDAY NIGHT

Delicious Fried Chicken, Salad, French Fries ..... \$1.50  
"All The Chicken You Can Eat"

### THURSDAY NIGHT

Tasty Spaghetti — "All A Person Can Eat" ..... \$1.25

### FRIDAY NIGHT

Seafood Platter, Salad & French Fries ..... \$2.00  
(Shrimp - Oysters - Stuffed Crabs - Scallops - Fillet - Trout)

Large Broiled Flounders, Salad & Baked Potato .... \$1.50

TRY OUR SUNDAY DINNER ..... \$1.00

# THE TEXAN

Dining Room

3204 College Avenue

Shoes Sizes Are  
No Problem  
5 to 14 — AA to E  
at  
**COURT'S**  
North Gate

## Health Services Are Best

The A&M college hospital, which provides for all student health services, is one of the finest and best equipped college hospitals in the Southwest.

The medical staff, under the direction of Dr. C. R. Lyons, includes specialists in the fields of medicine; surgery; ear, nose and throat and mental hygiene. In

addition, a staff of registered nurses is on duty at all times while school is in session.

Facilities available include physical therapy and an X-ray department. Major surgery and specialized care are not handled by the hospital, however.

The facilities of the hospital and its staff are available to every student who pays the health fee at registration.

Joe Adcock of the Milwaukee Braves twice led National League first basemen in most putouts.

## BAKER TIRE COMPANY

N. C. Baker, Owner  
Day TA 2-8159

708 N. Bryan  
Night VI 6-7038

TIRES ★ TUBES ★ BATTERIES

We Won't Be Undersold on Tires. See Us Before You Buy.

TIRE RECAPPING & REPAIR  
RE-CAP FOR EXTRA MILES

"I Trade For Anything"

NATIONWIDE TRAILER RENTAL SYSTEM

Trailer For Rent — Anywhere in the U. S.  
One-Way or Round Trip

"I Don't Want All The Business  
Just Yours"

## FINE CUSTOM PICTURE FRAMING

- MATS
- VELVET LINERS
- LINEN LINERS
- SHADOW BOXES

ART SUPPLIES

## MINK . . . . ARTCRAFT

923 S. College — TA 3-1735

# TRADE WITH LOU — MOST AGGIES DO!