

# Weirus Joins Former Students Staff

Richard (Buck) Weirus has been named director of the Development Fund of the Association of Former Students, Texas A&M, J. B. Hervey, executive secretary of the Association, has announced.

A 1942 graduate of A&M, he will also be assistant secretary of the Association.

Weirus will plan and direct the newly expanded program which calls for broader support of activities of the College for which state funds are not available and an all-out effort for the active support of all A&M men, Hervey said.

An immediate past vice-president of the Association's District VIII, Weirus for the last two years has been an advertising executive for a publishing company in Austin.

Weirus has had extensive experience with the State Adjutant

General's Department as staff assistant for the 112th Cavalry Regiment, organizing National Guard units and employing and training full-time state employees.

He came to Texas from Wisconsin and finished high school in San Antonio and then took his

BS degree in industrial education at A&M. He served in the field artillery in World War II and was a captain.

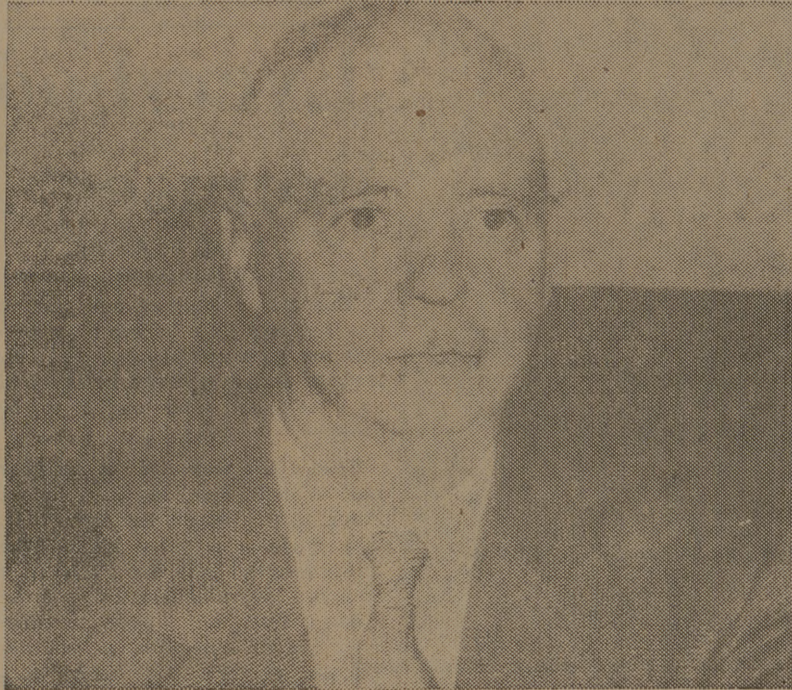
After military service he took over the Weirus Weaving Company of San Antonio, when his mother, the founder, retired.

He is a Methodist, a 32nd degree Mason, a Shriner, vice-president of the San Antonio Advertising Club and a past president of the San Antonio A&M Club. He is active in army reserve affairs, commanding the 4th Recon. Sq., 15th Cav., 90th Inf. Div., USAF.

## English Prof Appointed Nat'l Awards Judge

Dr. John Paul Abbott, Distinguished Professor, English Department, Texas A&M, has been appointed a judge in the National Council of Teachers of English Achievement Awards Competition.

The Council is a professional organization of about 60,000 members and subscribers at all school levels. The purpose of the program is to grant public recognition to some of the nation's outstanding students of high school English, James R. Squire of Champaign, Ill., executive secretary of the Council, in announcing the appointment of Dr. Abbott, said.



Dr. John P. Abbott  
... National Judge

Warren Spahn, Lew Burdette and Vern Law all completed 18 National League starts in 1960.

## Lutheran Church Opens Office In YMCA To Serve Students

The Lutheran Church, Missouri Synod, has opened a full-time office at the YMCA to serve Lutheran students at Texas A&M. Plans are being made to erect the A&M Lutheran Chapel and Student Center at North Gate in the very near future.

Called to serve as full-time campus pastor and instructor in the department of religion is the Rev. E. George Becker who resides with his family at 1612 Jersey St.

He comes with his family to College Station from Rockford, Illinois, where he organized and developed a new congregation which grew from 46 to 500 members during the past four years. Previous to this time he served as campus pastor and instructor in the department of religion at Oklahoma State University, Stillwater.

Becker received his Bachelor of

Science from Concordia Teachers College, River Forest, Illinois, in 1946, and graduated from Concordia Seminary, Springfield, Illinois, in 1950. He has done graduate work at Columbia University, the University of Chicago, and Oklahoma State University.

This past week Becker met with President Rudder, Dean Hannigan, Gordon Gay, coordinator of religious affairs, and Dr. Norman Anderson, chairman of the department of religious education.

This summer the Rev. Mr. Becker will serve as Dean of a Lutheran youth school at Camp Lone Star, LaGrange, and as a guest lecturer at the Lone Star Gamma Delta Retreat. He will leave for Chicago this week to attend the Lutheran Campus Pastors Institute at Concordia Teachers College.



Look your best at formal affairs

Look your best on gala occasions in formal clothes cleaned to perfection by us. Your "audience" will applaud! Try us soon.

Campus Cleaners

RESERVE DISTRICT NO. 12

STATE NO. 1754

Report of Condition of

### COLLEGE STATION STATE BANK

of College Station, Brazos County, Texas

at the close of business June 30, 1961, a state banking institution organized and operating under the banking laws of this State and a member of the Federal Reserve System. Published in accordance with a call made by the State Banking Authorities and by the Federal Reserve Bank of this District.

#### ASSETS

|   |                       |
|---|-----------------------|
| Cash, balances with other banks, and cash items in process of collection                | \$ 835,702.32         |
| United States Government obligations, direct and guaranteed                             | 777,041.35            |
| Obligations of States and political subdivisions  | 166,298.70            |
| Corporate stocks (including \$9,150.00 stock of Federal Reserve Bank)                   | 9,150.00              |
| Loans and discounts (including \$8,671.80 overdrafts)                                   | 1,990,263.93          |
| Bank premises owned none, furniture and fixtures  | 22,700.48             |
| Real Estate owned other than bank premises  | 30,281.96             |
| Investments and other assets indirectly representing bank premises or other real estate | 1.00                  |
| Other assets  | 2,861.00              |
| <b>TOTAL ASSETS</b>   | <b>\$3,834,300.74</b> |

#### LIABILITIES

|   |                       |
|---|-----------------------|
| Demand deposits of individuals, partnerships, and corporations          | 1,995,305.71          |
| Time and savings deposits of individuals, partnerships and corporations | 727,025.88            |
| Deposits of United States Government (including postal savings)         | 115,474.70            |
| Deposits of States and political subdivisions                           | 594,145.47            |
| Other deposits (certified and officer's checks, etc.)                   | 13,600.96             |
| Total Deposits  | \$3,445,552.72        |
| Total demand deposits   | 2,621,833.78          |
| Total time deposits   | 823,718.94            |
| Other liabilities   | 20.00                 |
| <b>TOTAL LIABILITIES</b>  | <b>\$3,445,572.72</b> |

#### CAPITAL ACCOUNTS

|   |                       |
|---|-----------------------|
| Capital                                       | 200,000.00            |
| Surplus                                       | 105,000.00            |
| Undivided profits                             | 83,728.02             |
| Total Capital Accounts                        | 388,728.02            |
| <b>TOTAL LIABILITIES AND CAPITAL ACCOUNTS</b> | <b>\$3,834,300.74</b> |

I, T. E. Whiteley, Cashier of the above-named bank do hereby declare that this report of condition is true and correct to the best of my knowledge and belief.

T. E. WHITELEY

Correct-Attest: Harold Sullivan  
H. E. Burgess  
Luther G. Jones Directors

State of Texas, County of Brazos ss:  
Sworn to and subscribed before me this 7th day of July, 1961. Robert L. Ayres Notary Public



## Picnics

LB. ONLY

# 29<sup>c</sup>

Cheese KRAFT WISCONSIN HOOP LB. 49<sup>c</sup>

Bacon GOOD VALUE .....Lb. 49<sup>c</sup>

Franks GOOD VALUF ALL MEAT .....Lb. 49<sup>c</sup>

Veal T-BONE STEAKS . . . Lb. 89<sup>c</sup>

# COKEs

 (Plus Deposit) 

# 12

 Bottle Ctn. 

# 49<sup>c</sup>

TOMATO JUICE Libby's 3 46-Oz. Cans 99<sup>c</sup>

PEACHES Hunt's Halves or Sliced 4 No. 2 1/2 Cans \$1.00

PIES Morton Frozen Apple-Peach-Cherry 22-Oz. 29<sup>c</sup>

ORANGE JUICE T.V. Frozen 6 6-Oz. Cans \$1.00

We Reserve The Right To Limit Specials Thurs. - Fri. - Sat. - July 13 - 14 - 15

Fresh Crisp  

# LETTUCE

  
2 HEADS 25<sup>c</sup>

Sunkist  
LEMONS 2 Lbs. 29<sup>c</sup>

White or Yellow  
ONIONS 3 Lbs. 29<sup>c</sup>

California  
PLUMS Santa Rosa Lb. 19<sup>c</sup>



2 CONVENIENT LOCATIONS  
200 E. 24th Street ..... Downtown  
3516 Texas Avenue ..... Ridgcrest