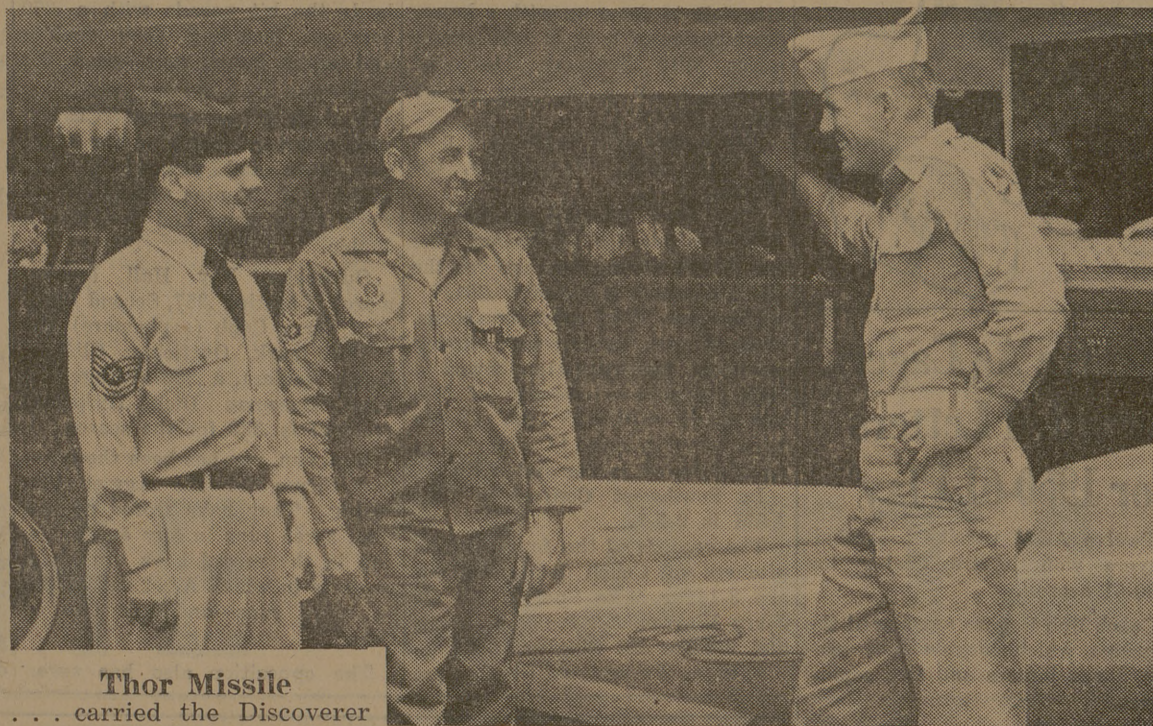


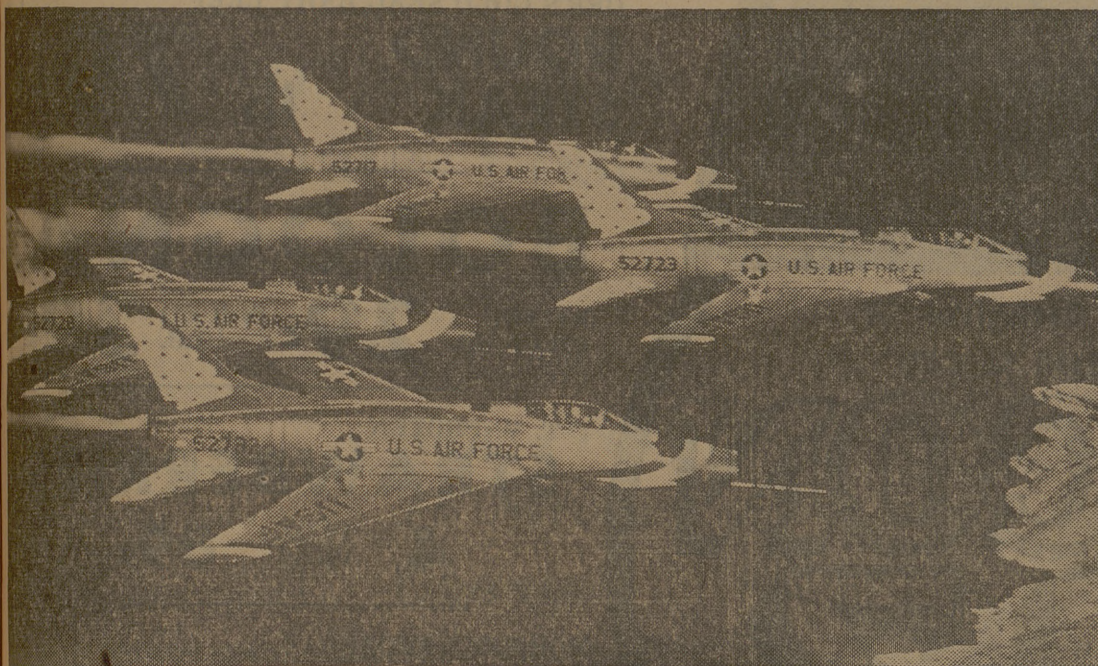
Accent On Aviation



Discoverer XIV displayed in the MSC



Thor Missile carried the Discoverer



Thunderbirds ... Saturday's top entertainment



Beech Aircraft Trophies ... one of many to be awarded

BATTALION CLASSIFIED

WANT AD RATES

One day 3¢ per word
2¢ per word each additional day
Minimum charge—40¢
DEADLINE
4 p.m. day before publication
Classified Display
80¢ per column inch
each insertion
PHONE VI 6-4415

FOR RENT

Furnished clean apartment, garage, utilities paid, couple only. VI 6-4557 or VI 6-4551. 1041fn
908 Fairview, three bedroom, bathtub and shower, \$39.00. Call VI 6-7334. 10314
Television, roll-away beds, baby beds, vacuum cleaners, refrigerators, ranges, air conditioners, belt vibratur, for rent by week or month. Call Kraft Furniture Co., Bryan, TA 2-5919. 10015

406½ North Main, you will find a two bedroom home, newly furnished with garage, \$55.00 a month. Ask at Gorbett's Alterations Shop or call VI 6-6982 after 5 or Saturday afternoon and Sunday 1001fn
Two bedroom furnished house, large yard, attic fan, \$50.00 a month. TA 2-7889. 941fn

Unfurnished two bedroom apartment, 220 wiring, attic fan, panel ray heat, near Brockett School. Phone VI 6-8560 after 5 p.m. 611fn
A one and two bedroom modern furnished apartment. Air conditioner if desired. Call after 4 p.m., TA 2-3827. 1399 Antone Street. 681fn

FOR SALE

1950 Peugeot air conditioned, black with white side walls, less than 7,000 miles, \$1,800.00, call VI 6-6108. 10413
Two beautiful used formal with matching gloves, call VI 6-7979 after 5 week days, all day weekends. 1021fn
Porsche Sports Car, 1500N engine, convertible, contact Courtland Bell, 10-303, VI 6-9916 10413
Two adjoining lots, each 80 by 145, corner Timber and Anna, College. Call VI 6-5694 noon or evening. 1001fn

WANTED

Four boys to rent two adjoining apartments, will furnish both. \$25.00 each apartment. Near Southside Grocery. VI 6-9650. 1011fn

HELP WANTED

Waitress wanted. Must be over 18 years old. Experience not necessary. Apply at 3606 South College Ave. TA 2-1352. 941fn

WORK WANTED

Child care in my home, \$35.00 a month or two for \$60.00. VI 6-4564. 10215
Typing. For a beautiful thesis or other papers have it typed by Mrs. Roy Carpenter, 300 Elm St. (Corner Elm and Cavitt), Bryan, phone TA 3-3695. 10214

DAY NURSERY by the week, day or hour. Call Mrs. Gregory, 502 Boyett. VI 6-4005. 1201fn

Our nursery for children all ages. Pick up and deliver. VI 6-5101. No answer call 421fn
Why wait until last minute to get your thesis reports, etc. to Bi-City Secretarial service? Electric typewriters, offset printing, negatives and metal plates made. 3408 Texas Ave. VI 6-5788. 871fn

OFFICIAL NOTICES

Official notices must be brought, mailed or telephoned so as to arrive in the Office of Student Publications (Ground Floor Y.M.C.A., VI 6-4415, hours 8-12, 1-5, daily Monday through Friday) at or before the deadline of 1 p.m. of the day preceding publication — Director of Student Publications.

All currently enrolled pre-veterinary medicine students who expect to qualify as applicants for admission into the School of Veterinary Medicine in September 1961, should file their applications in the Registrar's Office not later than May 1. Forms to be used in making applications for admissions to the School of Veterinary Medicine are available at the information desk in the Registrar's Office.
H. L. Heaton
Director of Admissions and Registrar 10214

Ph.D. LANGUAGE EXAMINATION
Examinations for meeting the foreign language requirement for the Ph.D. degree will be given Wednesday, May 3rd at 8:00 a. m. and 1:00 p. m. in Room 129, Academic Building. Students wishing to take this examination should leave the material over which they wish to be examined with the Secretary in the Department of Modern Languages not later than 5:00 p. m. Monday, May 1st.
J. J. Woolket,
Head, Department of Modern Languages 94112

SPECIAL NOTICE

Hilltop Lake, located on Hwy. 6 South, 9½ miles from College. Sould be good fishing soon. Clean picnic grounds. 761fn
Electrolux Sales and Service, G. C. Williams, TA 3-8600, 901fn

Hotard's Cafeteria Where the Art of Cooking is not Lost

Cash Available For Books, Slide Rules, & Etc
5,000 AGGIES CAN'T BE WRONG
LOUPOT'S

Read Battalion Classifieds Daily

Sen Wood Discount PHARMACY
3211 Texas Avenue • P. O. Box 888 • Phone: TA 2-3307
BRYAN, TEXAS

Every Day Discount Savings

VITAMINS	
32 ounce Clusivol	\$8.25
16 oz. Clusivol	4.69
8 oz. Mulcin	2.09
8 ounce Deca Mulcin	2.45
60 c. c. Zyma Drops	3.59
60 c. c. Zymatinic	2.80
45 c. c. Vi-Syneral drops	3.39

BABY NEEDS	
4 oz. Dexitin ointment	1.05
Enfamil milk (23¢ per can) per case	5.25
Similac liquid	5.25
Sobee liquid	4.45
Lactum liquid	6.00
1.65 Genteel Baby Bath	1.40
55¢ Z. B. T. Talcum powder	.67
55¢ J & J Baby Oil	.49
Nursamatic nipples	3 for .25
59¢ Nursamatic insta valves	2 for .45

FAMILY NEEDS	
4.75 Senokot granules	3.59
2.76 Metamucil medium	1.80
8 ounce Metrecal	.93
1.23 Bufferin 100's	1.09
1.00 Rhinal nose drops	.85
90¢ Desenex	.75
2.00 Banarin tablets	1.69
40-50-75- and 100 watt lite bulbs	.24
8 m. m. Kodachrome movie film	2.55
4.98 Sojourn folding syringe	3.95
2.75 Emko Foam	2.25
2.50 Delfen kit	2.10
1.59 Norforms	1.35

75¢ Rhulicream 1 oz. tube	.49
1.35 Rhulicream 2 oz. tube	.85
1.35 Rhulispray	3 oz. .85
2.20 Rhulispray	6 oz. 1.39

Prices subject to stock available

INSPIRED BY *Pat Boone*

for the pursuit of studies, etc. . .

British Tabs from *Dickies* Casuals

New British Tabs offer smart no-belt styling with adjustable button-tabs at the side. Processed for permanent fit, British Tabs are featured in the new lighter weight wash and wear fabrics.

The Exchange Store
"SERVING TEXAS AGGIES"

We're Serving Savings!

-GROCERIES-	-FROZEN FOODS-
KRAFT'S SALAD BOWL Salad Dressing . . . qt. 39c	SUNSHINE STATE Orange Juice 5 cans \$1.00
28-OZ.—BOTTLE KRAFT'S BAR-B-QUE SAUCE 29c	TENNESSEE GREEN PEAS 6 for \$1.00
18-OZ GLASS KRAFT'S STRAWBERRY PRESERVES 45c	Chopped Spinach
12-OZ. PKG. KRAFT'S SLICED American Cheese pk. 39c	Chopped Broccoli \$1.00
8-OZ. PKG. KRAFT'S PHILADELPHIA CREAM CHEESE pk. 29c	Chopped Turnip Greens
2-LB. CARTON KRAFT'S VELVEETA CHEESE 79c	
SHORTENING S P R Y 3 lbs. 69c	
NO. 2½ CANS O-SAGE ELBERTA PEACHES 4 for \$1.00	
NO. 2½ CANS—HUNT'S WHOLE APRICOTS 4 for \$1.00	
DUNCAN HINES Yellow, White or Chocolate CAKE MIXES 3 for \$1.00	
FOLGER'S MOUNTAIN GROWN COFFEE 1-lb. Can 69c	
6-OZ. Instant 79c	
NO. 2½ CANS STAR KIST CHUNK STYLE TUNA can 25c	
NO. 303 CANS OREGAN TRAIL—WHOLE BLUELAKE BEANS . . . 2 for 49c	
14-OZ. BOTTLES SNIDERS CATSUP 2 bottles 39c	
NO.1 CANS DEL-HAVEN—With Chillies TOMATOES 2 for 25c	
300-SIZE CANS DEL-HAVEN—FRESH Blackeye Peas 2 for 25c	

-MARKET-
PEN FED BABY BEEF CUTS LOIN STEAK 1-lb. 79c
T-BONE STEAK 1-lb. 85c
PIN BONE LOIN STEAK 1-lb. 69c
MEATY SHORT RIBS 1-lb. 39c
DECKER'S TALL KORN Sliced Bacon49c
WISCONSIN MEDIUM AGED Cheddar Cheese 1-lb.59c
HORMELS CANNED H A M S 3 lb. can \$2.79
HORMEL'S DAIRY BRAND ALL MEAT FRANKS . . 1 lb. 49c
Borden's Biscuits 3 for 25c

-PRODUCE-
CARROTS cello bag 11c
48 SIZE RUBY RED GRAPEFRUIT each 5c
CELERY stalk 11c

SPECIALS GOOD THURSDAY AFTERNOON, FRIDAY, AND SATURDAY, APRIL 27, 28 & 29th

CHARLIE'S FOOD MARKET
NORTH GATE —WE DELIVER— COLLEGE STATION