



Tried Regular Filter Cigarettes? Tried Other Menthol Cigarettes?

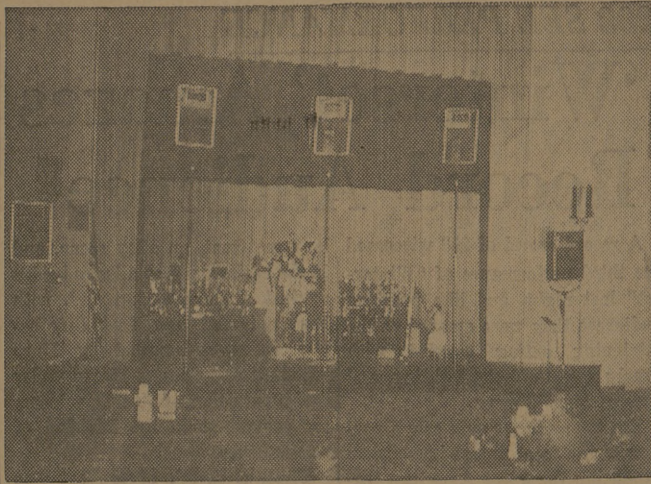
NOW! Come Up...All The Way Up to the MENTHOL MAGIC of KOOL!

When your taste tells you it's time for a change, remember: Only KOOL—no regular filter cigarette, no other menthol cigarette—gives you real Menthol Magic!

YOU FEEL A NEW SMOOTHNESS DEEP IN YOUR THROAT.



©1960, BROWN & WILLIAMSON TOBACCO CORPORATION THE MARK OF QUALITY IN TOBACCO PRODUCTS



Conniff Group Rehearses

The Ray Conniff orchestra and theater stereo equipment are shown during rehearsal for his national tour, which tonight appears on the A&M campus.

New Promotion List Announced

A new promotion list was released Monday by School of Military Sciences.

It included the following promotions:

First Battle Group, Michael A. Kolpack, operations sergeant; Co. F-1, Edwin N. Broesche, platoon sergeant from supply sergeant; white band, Raymond W. Stanford, Jr., squad leader;

Co. A-1, Roy E. Boswell, 1st lieutenant; Patrick L. McLaughy, squad leader; Co. D-1, Robert D. Patrick, squad leader; Co. F-1, Wayne W. Wright, ordnance sergeant, Paul E. Ashley, administrative sergeant Co. I-2, John D. Hollman and John F. Howell, 2nd lieutenants;

Co. K-2, Thad G. Whiteley, ordnance sergeant; headquarters

first wing, Paul F. Heye, operations sergeant; Jimmy L. Cash, intelligence sergeant; 1st group, John R. Nicholson, supply sergeant; Sq. 1, Billy C. Dodson, scholastic sergeant, John P. Baranski, element leader; Sq. 2, Marcus Covington, flight leader; Teddie I. Miller, supply sergeant;

Sq. 3, Eduardo M. Duran, flight sergeant; William B. Snead, supply sergeant; Gene T. Strader, element leader; Wayne F. Liska, administrative sergeant; Sq. 4, Tommy A. Hohman, scholastic sergeant; Sq. 5, Willis N. Ward, executive officer; Sq. 6, Jerald W. Fletcher, athletic sergeant; Charles E. Cornany, element leader; Sq. 7, Charles M. Bratton, element leader; Windel D. Rayburn, administrative sergeant;

Sq. 8, Clyde L. Whitwell, 1st lieutenant; Ralph C. Bruton, athletic officer; Frank C. Carlstrom, flight sergeant; Victor A. Riley, element leader; Sq. 11, Robert C. Wakefield, supply sergeant; Sq. 13, Nathan C. O'Brien, flight sergeant; Shermin D. Sullivan, flight sergeant; Kenneth G. B. Joyce, scholastic sergeant; Sq. 14, James P. Holley, supply sergeant.

THIS IS HOW

When It's Over You'll Ask How Conniff Did It

Unique custom-engineered electronic equipment enables orchestra leader Ray Conniff to present a "Concert in Stereo" during his current national tour.

The equipment was built by the Westrex Corporation, a division of Litton Industries, at the division's Recording Equipment Department, Hollywood. The complex electronic devices will enable Conniff to bring recording studio stereo quality into every seat in the theaters on his 20-state tour.

Conniff's orchestra-and-chorus selections are arranged for stereo presentation. Emphasis is placed on the pickup of each instrument or voice by the strategic placement of as many microphones as necessary. Previously, these arrangements could be heard only on records because concert halls or auditoriums do not have sound systems that can duplicate the carefully developed stereo effects.

Picks Up Sounds

The system, however, picks up the sounds from the orchestra and chorus on the auditorium stage and converts them into true three-channel stereo for the audience.

During the concert Conniff demonstrates the sound quality of the system by turning it off briefly. The acoustics of the auditorium are flat by comparison, and the sounds of some instruments are lost to the listener.

"We make use of electronics to glamorize our music and to add depth and excitement to the finished products," Conniff says.

The sound system is unique because it has an unusual number of inputs (form 12 microphones), brings true three-track stereo to the audience over five speakers, is designed for mobility and includes a reverberation unit that provides an artificial echo.

The microphones are in such positions so they isolate the distinct sound originating from each group. These are piano, percussion, saxophones, guitars (two microphones), drums, bass, harp, brass section, men singers, women singers and announcer.

The outputs from these microphones are transmitted to a mixer tailored for this purpose by Westrex. Here two engineer-arrangers manipulate each input so that the output from the mixer will be the optimum for every seat in the hall.

Three Channels

Output is on three channels, the number required for reproduction approaching true stereo (commercial recordings are on two channels). This is carried to two speakers on the left, two on the right and one in the center.

Two engineers are necessary because their judgment dictates the characteristics of the sound that reaches the audience. One is an

arranger who already has rehearsed with Conniff on "talk-throughs" and can pass a professional judgment on which inputs or outputs should be altered. His associate adjusts the appropriate knobs and observes volume meters.

Preliminary setting of the knobs takes place before the performance, based on the engineers' acoustical study of the hall. Four to five hours are required to install the equipment. Because each person has an effect upon the actual tonal quality of the hall the final adjustments cannot be made until the actual performance. This is done following the first number. Talk by the conductor fills in the pause necessary while the adjustments are made.

An intercommunication system enables the two sound engineers to communicate with the conductor, back-stage electrician and spotlight man. Lighting effects suitable for the arrangement are an important feature of the concert.

A reverberation unit designed by Westrex enables Conniff to bring into the concert hall the echo effect familiarly heard only on his stereo recordings. Conniff re-creates in the concert hall an effect introduced onto recordings to simulate concert hall acoustics.

Accepts Output

The reverberation unit accepts the output from the mixer and stores each channel on a magnetic storage drum. The sound is then taken off the storage drum four successive times at delays of 1/30 to 1/4 second. The same sound reaches the ear at slightly different moments, duplicating the uncontrollable phenomenon that takes place in concert halls as a result of sound bouncing from the walls and ceiling.

In the concert hall the same sound reaches the ear in decreasing amplitudes as the result of bouncing. This "decay characteristic" is duplicated in the reverberation unit.

During the design stage of this complex equipment Conniff was consulted because his arrangements

TRADITIONAL!



EXTRA-TRIM POST-GRAD Slacks

Post-Grads are traditionally styled for those lithe, tapered lines you've always had a yen for! Smooth, pleatless front; pre-cuffed bottoms. At the smartest college shops; in a host of washable fabrics from \$4.95 to \$8.95.

Stocked Only At Loupot's

For The Intellectual Type Aggie!

- One ruler
- One pair of glasses with case
- One economics book
- One pipe
- One ball-point pen

These items can be obtained for a nominal fee at the MSC Lost and Found Auction in the Fountain Room on Tuesday, Nov. 22, 1960 at 2 p. m.

BETTER FOOD BUYS EVERYDAY

- COCA COLA 12 Bottle Ctn. Plus Deposit 45c
- FOLGERS COFFEE 2 Lb. Can \$1.18
- FRUIT PIES BANQUET Apple-Peach-Cherry 8 in Pie 29c

- Snowdrift SHORTENING 3 Lb. Can 59c
- Tide WASHING POWDER Gt. Box 65c
- Grade AA EGGS Feather Crest Med. Doz. 55c

- BACON Hormel Dairy Lb. 49c
- MEAT PRICES TRIMMED Baby Beef CROWN ROAST Lb. 35c
- STEAK STEW MEAT Lean Brisket Lb. 35c
- LEAN SHOULDER Lb. 49c
- TENDER ROUND Lb. 69c
- FANCY SIRLOIN Lb. 69c
- ROAST Rump or Pikes Peak Lb. 69c
- GROUND MEAT Fresh 3 Lbs. \$1.00
- PORK RIBS Fresh Lb. 29c

- Russett POTATOES 10-Lb. Bag 39c
- Golden BANANAS 2 1/2 B 25c
- GRAPEFRUIT Ruby Red Ea. 5c
- ORANGES Valley Sweet 5 Lbs. 39c
- BELL PEPPERS Large Fancy-Lb. 15c
- LETTUCE Jumbo Head 15c



PLACE YOUR ORDER TODAY FOR ARMOUR'S FANCY TURKEYS. OUR PRICES WILL BE LOW.

SPECIALS GOOD NOVEMBER 17-18-19, 1960

MILLER'S SUPER MARKET
3800 TEXAS AVENUE VI 6-6613

'Mrs. A&M' Contest Nears Final Stages

The hunt for Mrs. Texas A&M is still going on. The Aggie Wives Council is sponsoring the contest. "The contest is open to all Aggie Wives," said Mrs. Jean Vaught, chairman of the event. "The only requirement is that she be the wife of a currently enrolled student at A&M," she added. Mrs. Vaught asked that anyone wanting information about the contest call her at VI 6-6109.

All entrants in the event are requested to be at the Battalion office in the basement of the YMCA at 7:30 tonight to have pictures made.

BATTALION CLASSIFIED

WANT AD RATES
One day 2c per word each additional day 1c
Minimum charge—40c
DEADLINES
4 p.m. day before publication
Classified Display 60¢ per column inch each insertion
PHONE VI 6-6415

FOR RENT
Four bedroom house, 1068 Welch Ave. \$40 per month, VI 6-7334. 3514
Three bedroom house, \$40 per month, furnished, 908 Fairview, VI 6-7334. 3514
One bedroom concrete, tile house, freshly repainted inside and out, 809 Fairview, \$35 per month, VI 6-7334. 3514
Pleasant furnished apartment for student of couple, two blocks off campus, \$35.00 per month. VI 6-6165. 341fn
New apartments, nicely furnished, five walk-in closets, two blocks from the Campus. VI 6-7248 or VI 6-4820. 331fn

FOR RENT
Furnished duplex apartment. Near North Gate. Joe Speck, Dorm 15, Room 219, 2111n
Nice, clean furnished apartment. Screened porch and garage. Near Southside Shopping Center. Call VI 6-6384 days or VI 6-4452 after 5 or anytime weekends. 91fn
Small furnished apartment. Near North Gate. Ideal for two boys who want to study and get by cheap. Phone VI 6-7248. 135fn

FOR SALE
'53 Triumph motorcycle w/ '57 engine, \$209.00 or trade for car. Mel Ehlers, 10-366, VI 6-9915. 3514

FOR SALE OR RENT
Large three bedroom house, 913 Fairview, \$39 per month, VI 6-7334. 3514

LOST
Slide for 12 in. D&E slide rule. Call VI 6-7412. 3312

Early Bird Shoppe, Inc
Curtains — Fabrics — Toys
Ridgecrest Village

TV - Radio - HiFi Service & Repair
GILS RADIO & TV TA 2-0826 101 Highland

Hotard's Cafeteria Where the Art of Cooking Is Not Lost

FOR RENT
Furnished duplex apartment. Near North Gate. Joe Speck, Dorm 15, Room 219, 2111n
Nice, clean furnished apartment. Screened porch and garage. Near Southside Shopping Center. Call VI 6-6384 days or VI 6-4452 after 5 or anytime weekends. 91fn
Small furnished apartment. Near North Gate. Ideal for two boys who want to study and get by cheap. Phone VI 6-7248. 135fn

FOR RENT
Furnished duplex apartment. Near North Gate. Joe Speck, Dorm 15, Room 219, 2111n
Nice, clean furnished apartment. Screened porch and garage. Near Southside Shopping Center. Call VI 6-6384 days or VI 6-4452 after 5 or anytime weekends. 91fn
Small furnished apartment. Near North Gate. Ideal for two boys who want to study and get by cheap. Phone VI 6-7248. 135fn

FOR SALE
'53 Triumph motorcycle w/ '57 engine, \$209.00 or trade for car. Mel Ehlers, 10-366, VI 6-9915. 3514

FOR SALE OR RENT
Large three bedroom house, 913 Fairview, \$39 per month, VI 6-7334. 3514

LOST
Slide for 12 in. D&E slide rule. Call VI 6-7412. 3312

Early Bird Shoppe, Inc
Curtains — Fabrics — Toys
Ridgecrest Village

TV - Radio - HiFi Service & Repair
GILS RADIO & TV TA 2-0826 101 Highland

Hotard's Cafeteria Where the Art of Cooking Is Not Lost

WORK WANTED
Our nursery for children all ages. Pick up and deliver. VI 6-8151. No answer call back 28114
Typing done, VI 6-7910. 211fn

WORK WANTED
Typing done electrically. Near Campus. Very reasonable. VI 6-5400. 1182z

SPECIAL NOTICE
SUL ROSS LODGE NO. 1300, A.F. & A.M. College Station, Texas
Called meeting Friday, Nov. 18 at 7:30 p. m. Fellowship Degree and Master Mason Degree. Students are especially invited.
C. W. Trossen, WM
Joe Woolket, Sec'y

QUALITY CHRISTMAS CARDS, Levelly wide selection. Personalized, businessmen's \$1.00 assortments, Dec. 4, deadline. Mrs. J. Stearns, A-14-D, VI 6-8641. 33110
H. L. Heaton, Director of Admissions and Registrar 3315

DAY NURSERY for the week day or hour. Call Mrs. Gregory, 562 Boyett, VI 6-4005. 1201fn

TYPENRITERS
Rentals - Sales - Service - Terms Distributors For: Royal and Victor Calculators & Adding Machines
CATES TYPENRITER CO. 909 S. Main TA 2-6909

JIM M. PYE '53 REPRESENTING Metropolitan Life Ins. Co. VI 6-5055 TA 2-6232 401 Cross St. C. S.

WANTED TO BUY
BACK ISSUES OF AGGIELAND, 1958 and prior wanted. Will pay YOUR price and postage for copies in fine condition. Write details AIR MAIL to the Jack Bell, AE 53, 158 A, ASACAF, APO 280, N. Y. 3214

OFFICIAL NOTICES
Official notices must be brought, mailed or telephoned so as to arrive in the Office of Student Publications (Ground Floor) Y.M.C.A. VI 6-6415, hours 8:12-1:55, daily Monday through Friday) at or before the deadline of 1 p.m. of the day preceding publication — Director of Student Publications.

An undergraduate student may order the A. & M. ring if he has 90 hours credit including what he is passing at mid-semester. Any student who may be interested in ordering his A. & M. ring on the basis of his mid-semester grades for the fall semester 1960 should leave his name with the Ring Clerk in the Registrar's Office. The record will be checked and eligibility determined by November 28. Orders for the ring will be taken November 28-January 2, 1961 inclusive. The Ring Clerk is on duty Monday through Friday from 8:00 a. m. to 12:30 noon. Rings will be ready for delivery on February 10, 1961.
H. L. Heaton, Director of Admissions and Registrar 3315
Graduation invitations for the January commencement must be ordered by November 22, 1960. They may be ordered at the Cashier's Window in the Memorial Student Center.

PRESTONE ANTI-FREEZE GALLON \$1.89
CHAMPION SPARK PLUGS EACH 60¢
JOE FAULK'S 214 N. Bryan

SOSOLIK'S TV - RADIO - PHONO SERVICE
713 S Main TA 2-1941