

Faculty Fellowship Session Scheduled

Bennie Zinn, director of student affairs, will lead the group meditation and Dr. Murray Brown, Department of Dairy Science, will provide the organ music for individual meditation, at the Faculty Christian Fellowship tomorrow in the All-Faiths Chapel from 6:30-7 a.m. and 7-7:20 a.m.

Lecture Scheduled On Moralism And Sex Ethics Tonight

The Rev. Burns Willis, associate minister of The First Methodist Church in Bryan, will speak at The Wesley Foundation tomorrow evening at 7:15. The basis for his address will be a paper entitled "Moralism and Sex Ethics: A Defense."

Burns received a BA degree from Wake Forest in North Carolina in 1950 and his BD degree from Union Theological Seminary in 1953. He also studied for a year at the Texas Medical Institute of Religion in Houston.

Coffee and doughnuts will be served in the South Solarium of the YMCA from 7:25-7:45 a.m., J. Gordon Gay, coordinator of Religious Life and general secretary of the YMCA, announced today.

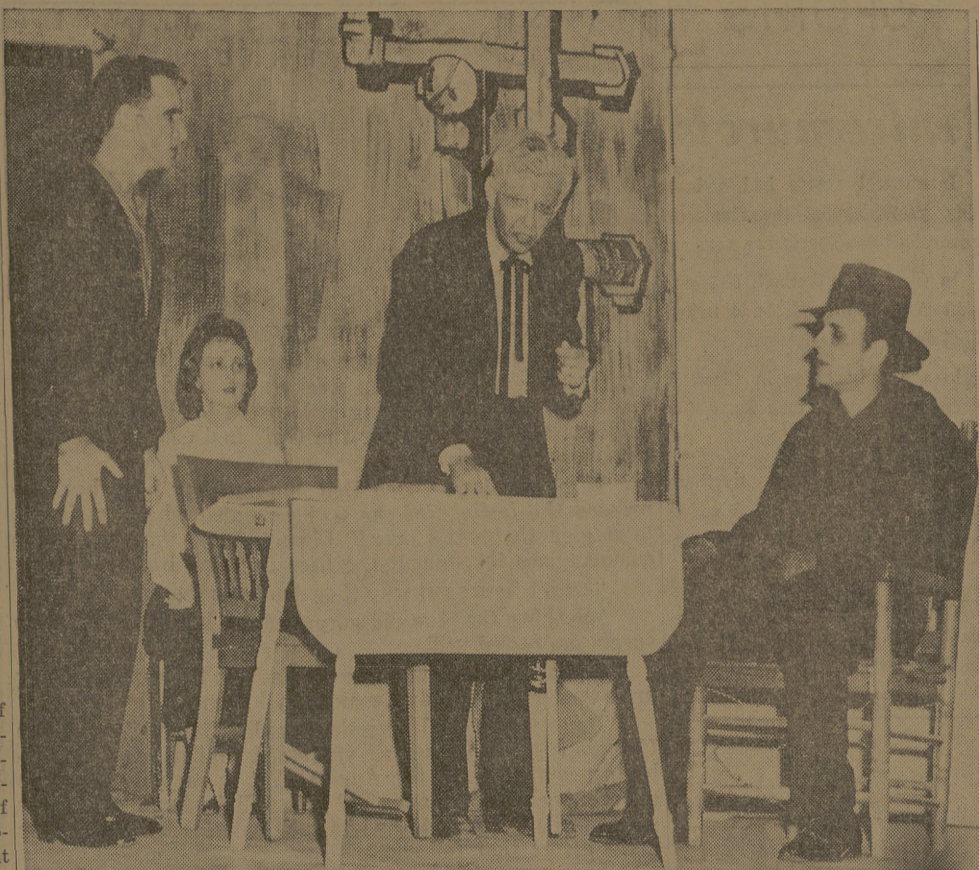
Poultry Science Professor Attends National Session

Dr. J. H. Quisenberry, head of the Department of Poultry Science, is participating in a comprehensive review of research underway in the Department of Poultry Science of the New Hampshire Agricultural Experiment Station.

The scientist left College Station Sunday and will return Saturday.

Quisenberry said it is "quite an honor" for a poultry scientist in the Southwest to be invited to give counsel to poultry researchers in the Northeast.

The US Department of Agriculture sponsors the comprehensive review program.



Judge Guant Speaks

A dramatic highlight in "Winterset" comes as Judge Guant, driven insane from his guilt of convicting an innocent man, tries to proclaim his own innocence in the case. Characters are, from left to right, Mio, played by David White; Miriamme, played by Marlene Rushing; Judge Guant, played by John Gladwell; and Trock, played by John Paxton.

Nearly \$22,000 Allocated By Exchange Store Group

Nearly \$22,000 was allocated last week by the Exchange Store Advisory Board for general use during the school year in 14 different phases of campus life.

Beside the amount allocated for use, a total of \$10,763.95 was retained by the committee for use by the store as operating capital and for general improvements.

The allocations were divided as follows:

Student Activities Club Aid, \$7,857.82; Bonfire, Student Senate, All-College Calendar, Yell Leaders and Who's Who Committee, \$1,500; Religious Life Program, \$1,000; Hensel Park Improvements, \$1,000; Rifle and Pistol Team, \$1,000; Cadet Corps Headquarters, \$300.

Civilian Student Government, \$450; Dormitory Athletic Equipment, \$800; Ross Volunteer and Freshman Drill Team, \$1,800; Band Awards and Trips, \$3,000;

Rifles for RV's and Freshman Drill Team, \$400; Rodeo Club for NIRA expenses, \$250; and Physical Education Recreational Club's equipment and supplies, water polo, handball, volley ball, weight lifting, soccer, gymnastics, badminton, fencing and wrestling, \$1,500.

This brings the total allocations to \$21,766.82.

Members of the committee are Mike Carlo, S. S. Cox, Roland Dommett, Dean of Students James P. Hannigan, G. T. King, Brantley Laycock, W. M. Romane, Richard Vander Stucken, Carl Birdwell, manager of the Exchange Store; C. E. Cosper, assistant director and business manager of the Memorial Student Center, and T. A. Moyes.

AT MEETING HERE

Convention Delegates Told Of Huge Annual Shortage

Texas beekeepers are shorting themselves approximately \$64,500 a year because of faulty wax production methods.

'WINTERSET'

(Continued from Page 1)

character for his role, and those who didn't see the production should take advantage of the four days left.

Set design and management were equal to, if not excelling, all others used by the Players in the past. From the audience, the set definitely had three dimensions, and with the various lighting, it was even more appealing.

An eye-catcher in the set was the bridge and New York skyline against a background of black, in the right rear of the stage.

"Winterset" held true as a great tragedy, with each scene containing the element of wry irony, dry humor and pity.

With its high quality of drama, the opening performance of "Winterset" was a feather in the caps of the Aggie Players. The play will be staged each night this week, offering a special opportunity to all seeking outstanding college drama.

Walter Barth of the A. I. Root Co. in San Antonio, one of the main speakers at the 79th annual Texas Beekeepers Assn. meeting yesterday and today, said producers waste about 150,000 pounds of beeswax per year. The wax sells for an average of 43 cents per pound.

Several reasons are behind the waste, he said. These include "sloppy" beekeeping, poor rendering methods for wax and failure to control damage by the wax moth.

The best way to render wax is with a press, Barth told the group, although the boiling method is still in widest use.

No Direct Heat

Barth warned the beekeepers not to use direct heat in wax rendering because of the fire hazard. Hot water is better and safer.

Claud Burgin, association secretary and an A&M entomologist, said the conference is held each year to keep members abreast of the latest developments and problems in the honey production business.

Another program speaker, Dr. Raymond D. Staten, Department of Agronomy, outlined reasons for the significant decrease in Texas sweet clover production.

Sweet clover is important to the honey business as source of pollen and nectar for bees.

The agronomist said most of the decrease has been in the biennial sweet clovers, which in turn was caused by widespread attack by root rot disease and a bug known as the sweet clover root borer. Also, sweet clover is not adapted to some Texas areas.

Have Veered Away

As a result, farmers have veered away from sweet clover as a seed and soil improvement crop, Staten said.

He said a remedy is to encourage more farmers to plant annual sweet clover instead of the biennial types. Disease and bugs

do not affect annuals as much as the biennials.

The purpose of honey crop reporting is to help producers toward more orderly marketing, according to Carroll Spencer of the Texas Crop and Livestock Reporting Service in Austin.

He said the reports, which are strictly unbiased, are based on three questionnaires sent to beekeepers each year. The first questionnaire asks the number of colonies; second, number of colonies and yield per colony, and the third, number of colonies, production per colony and prices.

Other speakers were Dr. J. C. Gaines, Head of the Department of Entomology; John Thomas, Texas Agricultural Extension Service entomologist; Dr. Nevin Weaver, A&M entomologist; Charles S. Engle of Wolfe City, TBA president; E. B. Ault of Westlaco and R. Stanley Weaver of Navasota.



Be well groomed for success

That "like new" look we give your clothes is sure to make the right impressions whether you're on the job or on the town.

CAMPUS CLEANERS

TRIANGLE'S LUNCHEON MENU

For Wednesday

- DEEP FRIED DEVILLED CRAB w/tartar sauce75
- VEAL STEAK w/mushroom gravy85
- CHICKEN FRIED STEAK95
- ROAST BEEF w/brown gravy95

(Served w/two vegetables, salad, hot rolls, coffee or tea)

Have you looked at your calendar lately, the holidays are just around the corner. If you are planning a banquet or party, now is the time to make your reservations. We still have a few vacancies for parties. We can accommodate from 10 to 250 people.

The TRIANGLE

3606 So. College

Bryan

PALACE

Robert Mitchum

LAST DAY In "NIGHT FIGHTER"

STARTS TOMORROW

NOW, FEAR POSSESSED HER... AS LOVE ONCE HAD!



DORIS DAY - REX HARRISON
JOHN GAVIN

Midnight Lace

in Eastman COLOR
MYRNA LOY - RODDY McDOWALL

No-One Will Be Admitted The Last 10 Minutes Of This Feature.

FEATURE TIMES: 1:15 - 3:16 - 5:17 - 7:18 - 9:25

QUEEN

DOUBLE FEATURE
Wed. - Sat.
TWO TERRIFIC MOVIES

Winner of 8 Academy Awards
Burt Lancaster, Frank Sinatra, Deborah Kerr

Kirk Douglas, Anthony Quinn, Earl Holliman

In "FROM HERE TO ETERNITY"

In "LAST TRAIN TO GUN HILL"



two heads are better than one

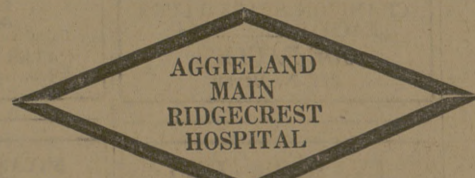
Especially when one happens to be a delectable girl-type head. Lovely heads are always attracted to male heads that use 'Vaseline' Hair Tonic - made specially for men who use water with their hair tonic. 'Vaseline' Hair Tonic's 100% pure grooming oil replaces oil that water removes. In the bottle and on your hair the difference is clearly there! Just a little does a lot!

IT'S CLEAR... IT'S CLEAN... IT'S VASELINE

VASELINE HAIR TONIC

VASELINE IS A REGISTERED TRADEMARK OF GILLETTE-BROWN-POND'S, INC.

Ellison



Pharmacy

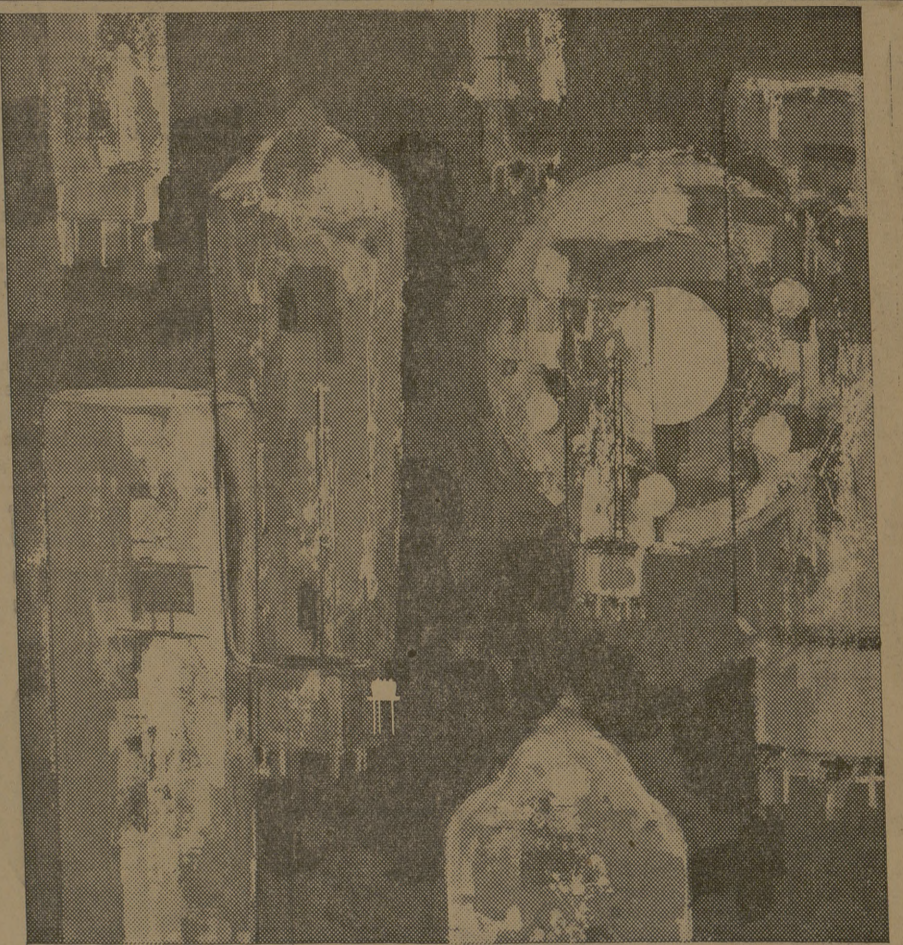
101 S. Main
Bryan, Texas

28th at Sterling
Bryan, Texas

North Gate
College Station

3511 Texas Ave.
Bryan, Texas

Prompt, Free Delivery Service



Solid opportunities with solid state devices

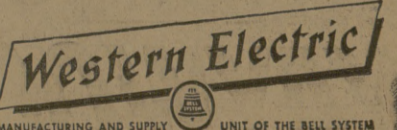
A big part of Western Electric's job is to manufacture the miniature "new arts" products that are changing the science of communications. It's a job which offers you a challenging career - a chance to plan new methods of mass producing ever-improving kinds of transistors, ferrite devices, diodes, special purpose electron tubes, etc.

You'll be with a company that is expanding rapidly in this field. At present our Allentown and Laureldale, Pa., plants are devoted exclusively to making electron devices, and a big new plant is under construction in Kansas City. The needs of the Bell Telephone System for these products are increasing daily and will multiply enormously with the introduction of Electronic Central Office switching now nearing trial operation.

These devices are changing the scene at all our manufacturing plants as they go into the startling new communications products developed by our associates at Bell Telephone Laboratories. From microwave transmission

equipment to submarine cable amplifiers, our products call for creative production engineering, installation planning, and merchandising methods. Our job for the Bell System and the U.S. government has grown to the point where we are now one of the nation's "Top 11" in industrial sales. And your chance to play an important part in our future growth is solid!

Opportunities exist for electrical, mechanical, industrial, civil and chemical engineers, as well as physical science, liberal arts, and business majors. For more information, get your copy of Consider a Career at Western Electric from your Placement Officer. Or write College Relations, Room 6106, Western Electric Company, 195 Broadway, New York 7, N. Y. Be sure to arrange for a Western Electric interview when the Bell System recruiting team visits your campus.



MANUFACTURING AND SUPPLY UNIT OF THE BELL SYSTEM

Principal manufacturing locations at Chicago, Ill.; Kearny, N. J.; Baltimore, Md.; Indianapolis, Ind.; Allentown and Laureldale, Pa.; Winston-Salem, N. C.; Buffalo, N. Y.; North Andover, Mass.; Omaha, Neb.; Kansas City, Mo.; Columbus, Ohio; Oklahoma City, Okla.; Engineering Research Center, Princeton, N. J.; Teletype Corporation, Skokie, Ill.; and Little Rock, Ark. Also Western Electric distribution centers in 32 cities and installation headquarters in 16 cities. General headquarters: 195 Broadway, New York 7, N. Y.