

BY SCOUTS

'Good Turn Day' Plans Completed

Plans for a three-fold "Good Turn Day" for all Cubs, Scouts, and Explorers of the Arrowmoor District have been completed.

Oct. 29, national Good Turn Day, Arrowmoor District Scouters will distribute doorknob hangers reminding citizens to vote in the national election Nov. 8, distribute clothing bags for Goodwill Industries, and give free tickets to the lady of each house good for admission to the American Cancer Society film, "Time and Two Women."

The national good turn, hanging the 30,000,000 doorknob hangers, is part of a get-out-the-vote campaign by Scouters during each national election year. The hangers, shaped in the form of the Liberty Bell, are to encourage residents to exercise their rights of freedom to vote in the Nov. 8 election.

Arrowmoor Scouters are accepting for their Sam Houston Area Council good turn the distribution of clothing bags for Goodwill Industries.

The Scouts will leave the bags at each home Oct. 29. Residents will be asked to fill the bags with discarded clothing and shoes, and place the filled bags on the front porch for pick-up at 1 p.m. Sunday, Nov. 13.

"If anyone fails to receive a Goodwill Industries bag, they

should fill a cardboard box and mark it for the Boy Scouts," said Dutch Harvell, professional Scoutmaster in the Arrowmoor District.

The film "Time and Two Women" will be shown at 9 and 10 a.m. Nov. 8, national election day, at the Palace Theater in downtown Bryan, at the Campus Theater at North Gate in College Station, and at Guion Hall on the A&M Campus.

The film, an American Cancer Society production, is being shown in cooperation with local medical men and the local chapter of the American Cancer Society.

SHUMAN

(Continued from Page 1)

legislation as long as increased production is being encouraged by government guarantees.

2. We should move in the direction of eliminating government regulation of the right to produce agricultural commodities.

3. Our farm plant is over-expanded in relation to current markets—including the extraordinary "markets" made possible by special export aids. A sizeable land retirement program is urgently needed as a temporary measure to help farmers make the adjustments that must be made to correct the adverse results of past programs.

4. Where price support and production adjustment programs are used, they should be designed to facilitate orderly marketing rather than to fix prices. Price support levels should take account of competitive conditions, supply and demand, and market trends.

5. With less interference from government, the marketing system will be freer to operate effectively and efficiently. This will encourage the expansion of market outlets and the production of quality products in line with market demands. Thus, farmers can better meet competition at home and abroad.

6. The compensatory or direct production payment approach is unsound and dangerous to our economic and political system.

"Regardless of the form in which it is presented, a direct payment program would be fantastically expensive. It would stimulate production, increase unit costs, depress market prices, and make farmers dependent on Congressional appropriations for their net farm income and a part of their production costs as well," said Shuman.

campus character:



BLACKSTONE TORT

Pride of the law school, Blackstone has never lost a moot trial. But there's nothing moot about his preferences in dress. He finds that when he's comfortable, he can trap a witness and sway a jury like Clarence Darrow.

So he always wears Jockey brand briefs while preparing his briefs. Exclusive Jockey tailoring gives him a bonus of comfort he gets in no other underwear. Fine Jockey combed cotton is more absorbent, smoother fitting, too.

To look your best, feel your best, take a tip from Tort. Always insist on Jockey brand briefs, \$1.25. Your campus store has them now!



campus character— or just Texas Aggie . . .

in your relentless search for knowledge, you have learned two things:

1. Jockey briefs are best
2. you can get them at . . .

a.m. Waldrop & Co.

MENS CLOTHING SINCE 1896

North Gate, College Station
Main Street, Bryan



Good Turn Day

Explorer Paul Wilson, Cub Toby Harvell, and Scout Thomas Hannigan take time out to show off the Goodwill Industries bags which will be distributed by the Scouts Oct. 29. Residents are asked to fill the bags with discharged clothing and place them on their front porch by 1 p.m. Sunday, Nov. 13.

IRS Announces Booklets Mislead

By The Associated Press
WASHINGTON — The Internal Revenue Service said Wednesday the 100 million instruction booklets it is printing for distribution with next year's income tax forms are misleading in one section.

However, IRS said the mammoth printing job is too far along to permit correction of the questionable information. It expressed hope that no taxpayers will be led astray as a result because a new tax form which is being prepared for use by those concerned—people claiming medical expense deductions for the aged—will contain more detailed and accurate data.

1040 And 1040-W Mislead
The instruction pamphlets for use with tax forms 1040 and 1040-W—the types most commonly filled—are misleading in discussing medical deductions for people 65 and older.

Under the law, if either a husband or wife is 65 or older, the medical expenses of both may be deducted in full, within broad dollar limits. In other words, taxpayers in this category do not have to follow the usual procedure of deducting only those medical expenses which exceed 3 per cent of their taxable income.

In discussing these cases, and those of people with dependent parents 65 or older, the IRS instructions say: "In these cases, that part of your medical expense

deduction which is attributable to the 65-or-over individuals is not reduced by 3 per cent of your adjusted gross income."

IRS officials conceded that this implies that if either husband or wife is under 65, the 3 per cent rule still applies to the medical expenses of that particular individual. Actually, the rule does not apply.

Botched Up
The instructions were botched up, officials said, because of an attempt to deal too briefly with a complicated matter. Those who wrote the booklets actually wanted to emphasize that if someone under 65 supports a parent 65 or over, the 3 per cent rule is waived only for the expenses of the parent.

The misleading nature of the instructions came to light after The Associated Press Tuesday reported erroneously that Congress last spring changed the law to prohibit waiver of the 3 per cent rule on the medical expenses of anyone under 65—even if the husband or wife was 65 or older. This statement came from an IRS spokesman who said Wednesday he had been led astray by the misleading instructions.

Methodist Bishop Challenges Catholics To Give Expression Of Responsibility

By The Associated Press

WASHINGTON — Bishop John Wesley Lord of the Methodist Church said Wednesday Protestants want an expression from responsible Roman Catholic Church sources in the United States that a Catholic president would not be subjected to pressures by his church.

Lord said Democratic nominee John F. Kennedy, a Roman Catholic, had made a "completely satisfactory" statement of his own views on separation of state and church but there is still some apprehension among Protestants as to pressure from the Catholic Church.

The Methodist bishop volunteered these views at a news conference which reporters were told was called primarily as a get acquainted session. The Methodist Church recently transferred Lord here from Boston.

As bishop of the Washington area, Lord has administrative duties in relation to churches in Maryland, Delaware and the District of Columbia.

In his discussion of religion in relation to the political scene, Bishop Lord said:

"No reasonable Protestant is opposed to a Roman Catholic in public office because of spiritual or clearly religious beliefs. This is not the issue. Nor do we Protestants ask for ourselves that which we would not also demand for our Roman Catholic brethren.

"What we need to face is whether or not an American Catholic Church will state a clearly defined political policy consistent with Democratic principles.

"Protestant principles are related to democracy and are seen at work in the historic framework of the freedom this country affords. Catholicism, coming late to the American scene, must now adapt its authoritarian principles to the Democratic context if it is to be above suspicion. It is not enough for candidature Kennedy to state this. His church must state

it. When the Roman Catholic Church will recognize without equivocation the basic rights of free individuals and disavow any

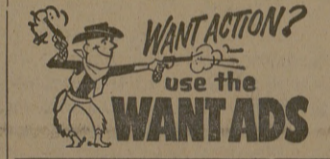
political involvement in the affairs of state all embarrassment for the Roman Catholic candidate will vanish.

good, faithful and devout Roman Catholic. There is an inconsistency in his position. I want to know the intentions of the Roman Catholic Church for the future."



EXTENDED THREE MORE DAYS TEXAS PRODUCTS SALE

- Plus Deposit
- COCA COLA** or Pepsi Cola 12 Btl. Ctn. **45c**
- Sliced or Halves
- PEACHES** Food Club No. 2 1/2 Can **19c**
- Food Club
- CATSUP** 14-Oz. Btl. **13c**
- J. W. COFFEE** Pliofilm Pkg.—Lb. **47c**
- TIDE or CHEER** Giant Box **65c**
- Kobey Shoestring Potatoes** No. 300 Can **10c**
- Apple, Peach, Cherry
- Fruit Pies Dartmouth** 20-Oz. Pkg. **29c**
- Cream Style Corn La Grande** 2 No. 300 Cans **25c**

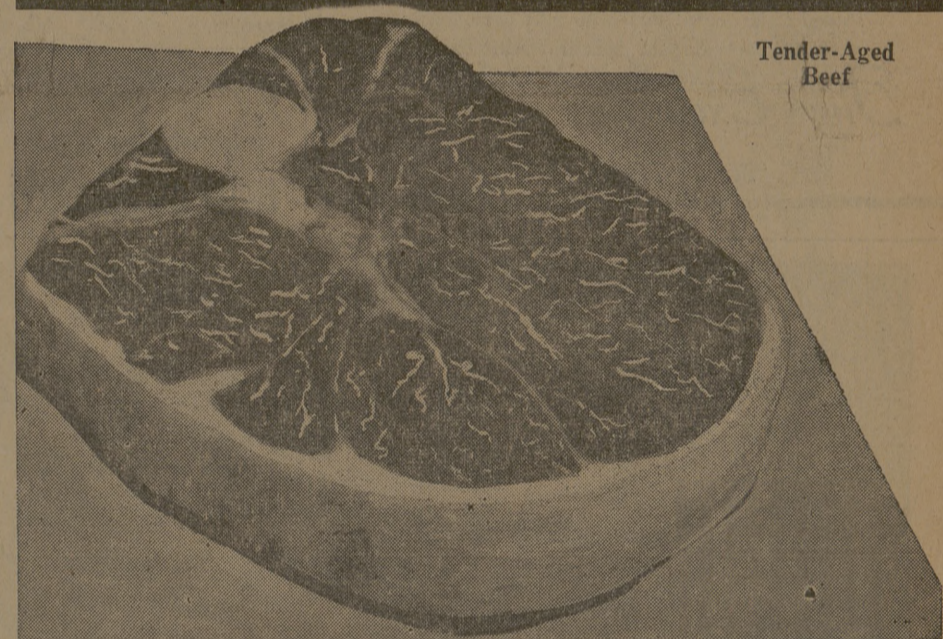


AGGIES NEED ANY WELDING DONE ??? ? ?

- ★ BUILD FURNITURE, TRAILERS, ETC.
- ★ BUILD GO-KARTS
- ★ WELD ALUMINIUM HEADS & MANIFOLDS

Call On

SPAW'S WELDING SHOP
VI 6-7209, Night VI 6-8367
(Next To Marion Pugh Lumber Company)



- Tender-Aged Beef
- ROUND STEAK Lb. 69c**
- BACON** Lucy Linda **LB. 49c**
- HORMEL SAUSAGE** Breakfast Links **LB. 33c**
- BEEF STEW MEAT** Boneless **LB. 69c**
- BOLOGNA** Swift's or Mohawk Sliced Lb. **39c** Piece Lb. **29c**
- CREAM CHEESE** Food Club 3 oz. pkg. **LB. 10c**

Gulton Hall THEATRE

FRIDAY
"SERGEANT RUTLEDGE"
With Jeff Hunter

SATURDAY
CLOSED

SUNDAY

ROBERT TINA TAYLOR · LOUISE FESS · JACK PARKER · LORD

THE HANGMAN

A PARAMOUNT PICTURE

Plus

PARAMOUNT Presents

TOKYO AFTER DARK

an ALBERT ZUGSMITH production
A Universal-International Release

CORPS SENIORS and MILITARY STAFFS

Aggieland Portrait Schedule

CORPS SENIORS AND OUTFIT FIRST

with Steve Reeves

Plus

"THE RISE AND FALL OF LEGS DIAMOND"
with Ray Danton

PALACE
Bryan 2-8879

Saturday Nite Prev. 11 p. m.

Executive officers and 1st sergeants will have portrait made in GH cap. Commanding officers will have boots. PLEASE MAKE APPOINTMENT FOR THESE FULL LENGTH PORTRAITS, AT THE STUDIO.

Oct. 24 - 25 Comp. A B C D (1st Brigade)

Oct. 25 - 26 Comp. E F G H (1st Brigade)

Oct. 26 - 27 Comp. A B C D (2nd Brigade)

Oct. 27 - 28 Comp. E F G H (2nd Brigade)

Oct. 31 - Nov. 1 Comp. G I K L M (2nd Brigade)

Nov. 1 - 2 Squadrons 1, 2, 3, 4

Nov. 2 - 3 Squadrons 5, 6, 7, 8

Nov. 3 - 4 Squadrons 9, 10, 11, 12

Nov. 7 - 8 Squadrons 13, 14, 15, 16, 17

Nov. 8 - 9 Maroon & White Band

All men in the corps on any staff, BOTH JUNIORS AND SENIORS, will have their portrait made for the "Aggieland '61" according to the following schedule.

Nov. 9-10 Corps Staff, Cons. Band

Nov. 10 - 11 1st Brigade, 1st and 2nd Battle Group Staffs

Nov. 14 - 15 2nd Brigade, 3rd, 4th, and 5th Battle Group Staffs

Nov. 16 - 17 1st Wing, 1st, 2nd Group Staffs

Nov. 16 - 17 2nd Wing, 3rd and 4th Group Staffs



STEVE ALLEN · JAYNE MEADOWS · WALTER WINCHELL · MAMIE VAN DOREN

COLLEGE CONFIDENTIAL
an ALBERT ZUGSMITH production
A Universal-International Release

- RED WINESAP
- APPLES** 4 Lb. Cello Bag **35c**
- CELERY** Pascal Crisp Fresh Stalk **10c**
- THESE PRICES GOOD IN BRYAN ONLY. OCT. 20-22